

**FOR LEASE**  
±995 SF AVAILABLE

**10832 LAUREL STREET**  
Rancho Cucamonga, CA 91730

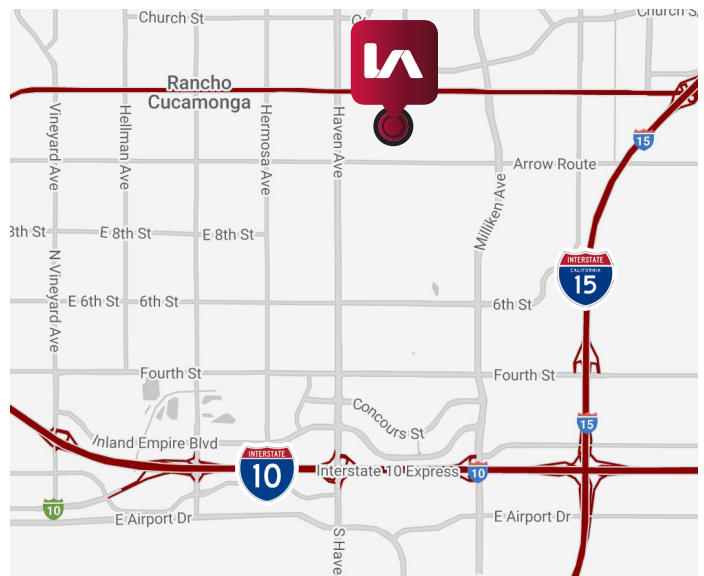


**VANIPARO  
PLAZA**

## PROPERTY HIGHLIGHTS

- Suite 203 - ±995 SF Available
- Great for Medical or Office
- High Image Professional Center
- Rare Ground Floor Medical Suite Available
- 4:1,000 Parking Elevator Served
- Central Location to Various Restaurants and Banks
- Lease Rate: \$2.25 FSG (Excluding in Suite Janitorial)
- Excellent Access to the CA-210, I-15, and I-10 Freeways

## LOCATION MAP



**GREG MARTIN**  
D (909) 373-2904  
gmartin@lee-assoc.com  
DRE #01001749

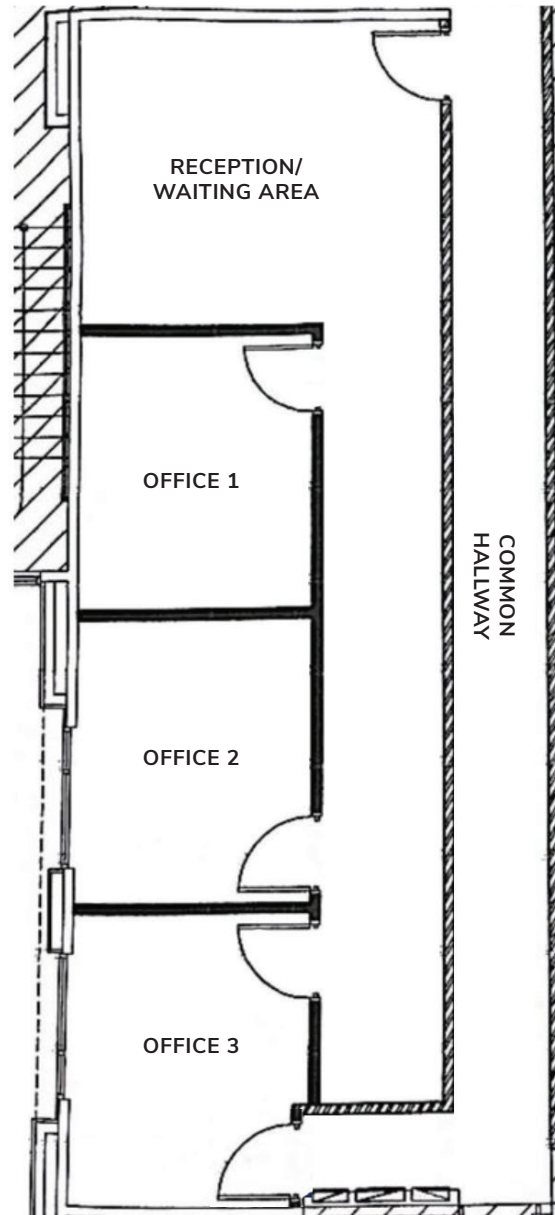
**LEE & ASSOCIATES - ONTARIO**  
3535 Inland Empire Boulevard  
Ontario, CA 91764  
(909) 989-7771  
Corporate ID: 00976995

**LEE &  
ASSOCIATES**  
COMMERCIAL REAL ESTATE SERVICES

**FOR LEASE**  
**±995 SF AVAILABLE**

**10832 LAUREL STREET**  
Rancho Cucamonga, CA 91730

**FLOOR PLAN**  
SUITE - 203 ±995 SF



**GREG MARTIN**  
D (909) 373-2904  
gmartin@lee-assoc.com  
DRE #01001749

**LEE & ASSOCIATES - ONTARIO**  
3535 Inland Empire Boulevard  
Ontario, CA 91764  
(909) 989-7771  
Corporate ID: 00976995

**LEE & ASSOCIATES**  
COMMERCIAL REAL ESTATE SERVICES