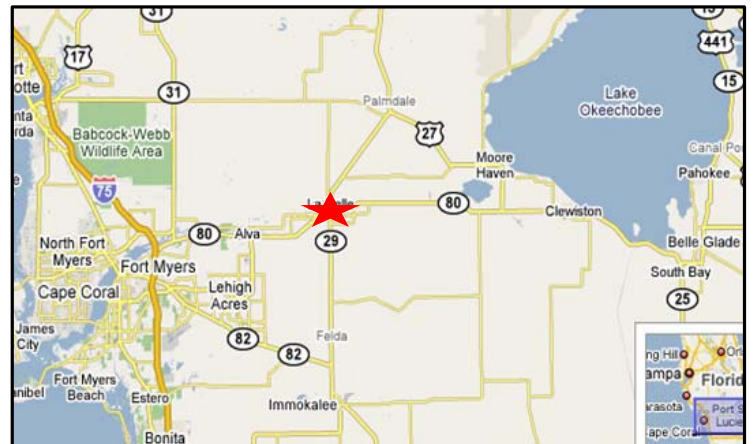


LABELLE, FLORIDA



Area Facts:

- Population 20,815 in 20 min drive
- Average Household Income \$53,592
- Traffic Count 13,200



Information contained herein deemed reliable but not warranted



Courthouse Square 165-175 South Lee Street LaBelle, Florida



☞ 2007 Construction

☞ Adjacent to County Courthouse

☞ Located next to Labelle Plaza including Save-a-Lot, Beef 'O' Brady's, Subway and more

Building 1

- Turnkey office space
- Can be subdivided
- Previously occupied by Hendry County Administration, Probation and Public Defender offices

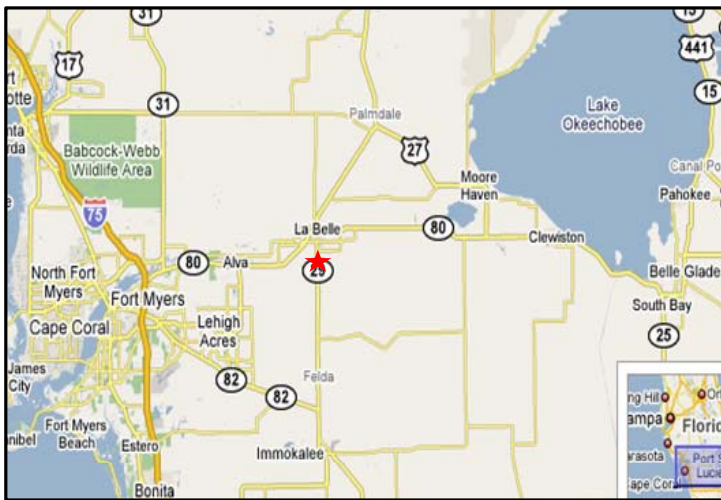
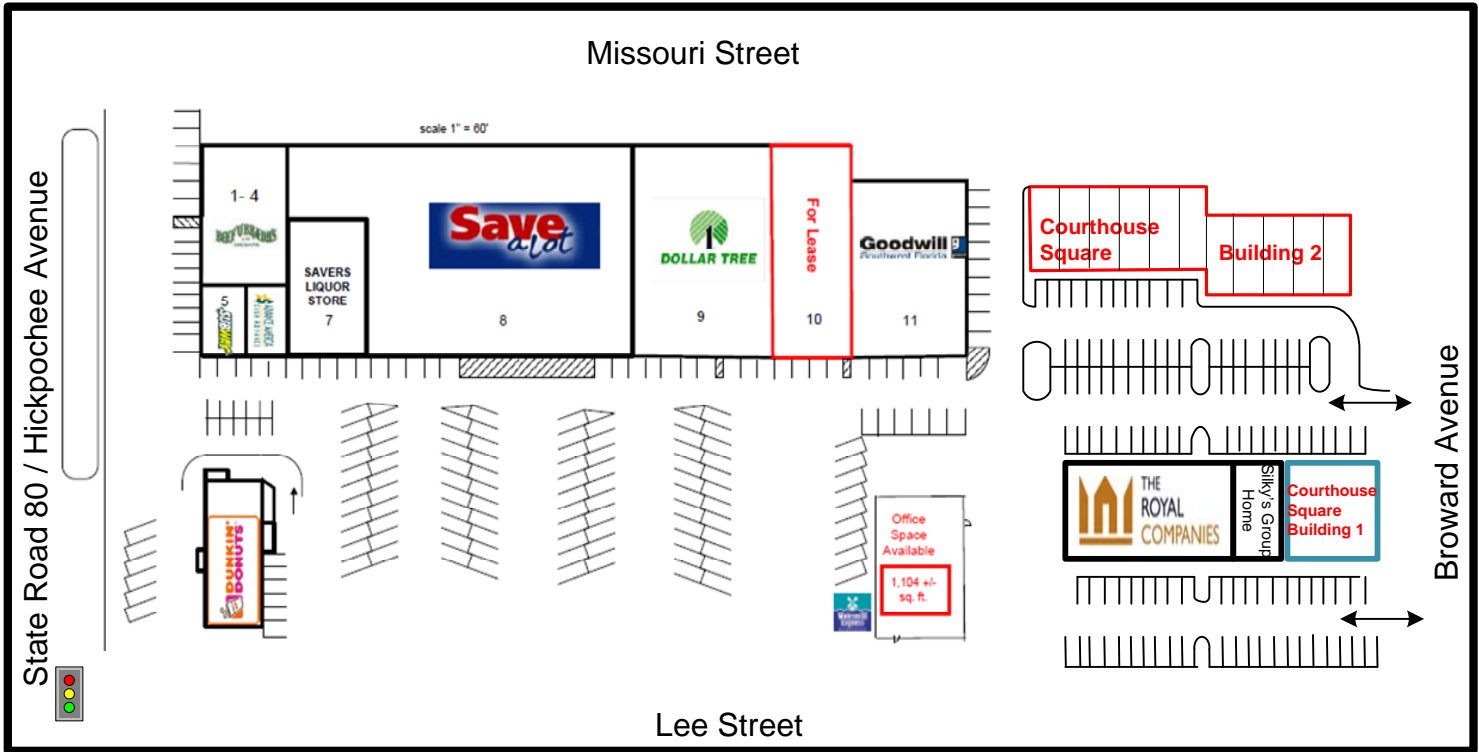
Building 2

- Offers bays at 1,100 sq ft
- Units can be combined side by side for flexible configurations
- Easily accessible



Courthouse Square

LaBelle, Florida



Building 1 - Space Available

***Units 7,8,9,16,17,18 = 65' x 70' = 4,550'**

****CAN BE SUBDIVIDED****

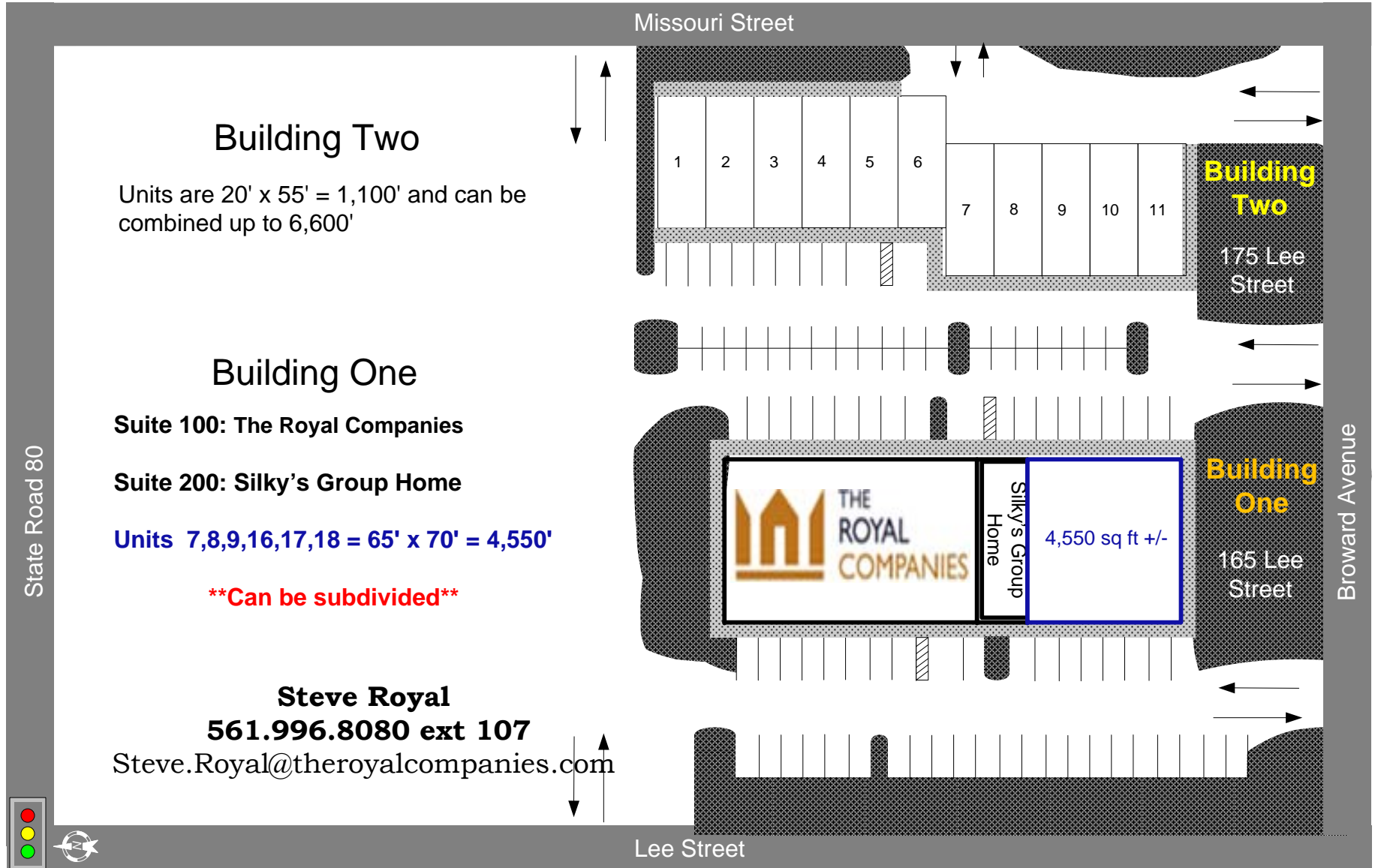
Building 2 - Space Available

*** Offers bays at 1,100 s.f. each**

*** Units can be combined side to side for flexible configurations**

Information contained herein deemed reliable but not warranted

Courthouse Square Labelle, Florida



For location purposes only!

The information above has been obtained from sources believed reliable. While we do not doubt its accuracy we have not verified it and make no guarantee, warranty or representation about it. It is your responsibility to independently confirm its accuracy and completeness. Any projections, opinions, assumptions, or estimates used are for example only and do not represent the current or future performance of the property. The value of this transaction to you depends on tax and other factors which should be evaluated by your tax, financial, and legal advisors. You and your advisors should conduct a careful, independent investigation of the property to determine to your satisfaction the suitability of the property for your needs.

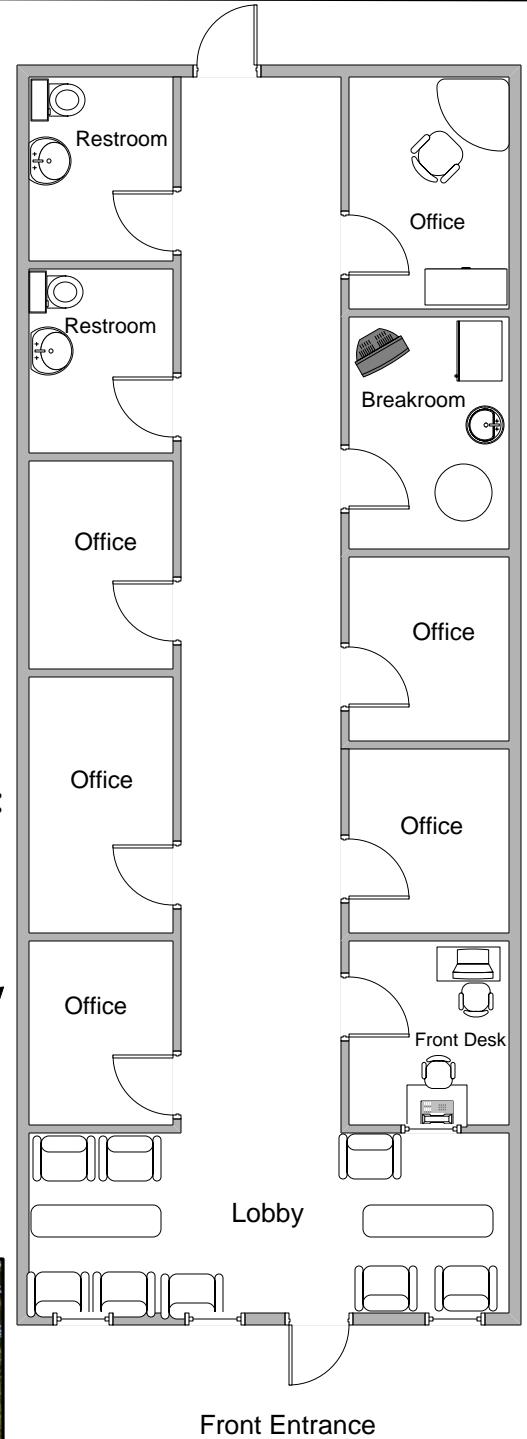
Courthouse Square Building 2

*Proposed 1,100 sq ft
Leasable Area
20' x 55'*

- ☞ Stable Community
- ☞ Lighted Intersection
- ☞ Excellent Visibility
- ☞ Easy Access
- ☞ Ample Parking

Area Facts within 5 miles:

- *2013 Population 17,826*
- *2013 Average Household Income \$56,580*
- *2013 Traffic Count 13,200*



This plot plan is for location purposes only. It shall not be relied on for any other purpose

Information contained herein deemed reliable but not warranted