



# for lease



## SOCCER DOME

15030 Dante Ave, Dolton, IL 60419

LARGE-SCALE SPORTS & FAMILY ENTERTAINMENT FACILITY

### Offering Summary



AVAILABLE SF | 43,658 SF  
LEASE RATE | \$14 SF/YR  
ZONING | B  
LOT SIZE | 2.24 AC



Traffic Count:  
13,450 VPD



Population:  
95,493 (3 MILES)



Avg HH Income:  
\$75,350 (3 MILES)



#Households:  
37,868 (3 MILES)

±43,658 SF sports and family entertainment facility available for lease in Dolton, featuring a clear-span interior with no columns, ideal for a wide range of athletic and entertainment uses. The property includes a concession area, liquor license, and is situated on a 2.24-acre site with on-site parking, offering flexibility for users seeking large-format space in Cook County.

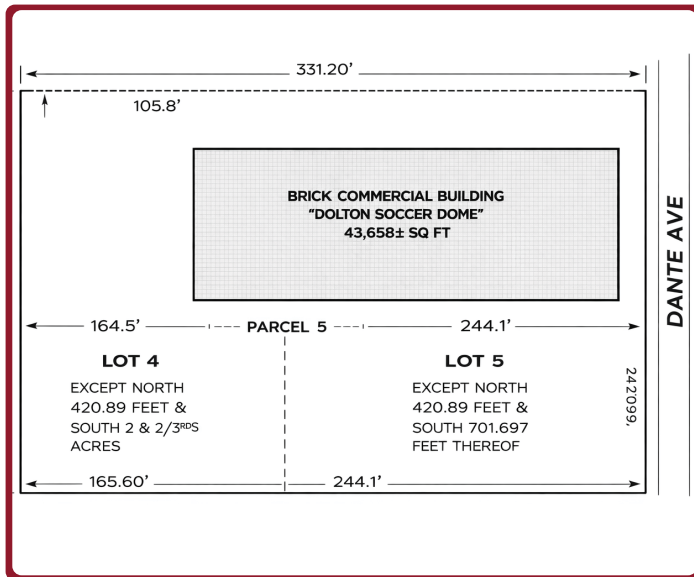
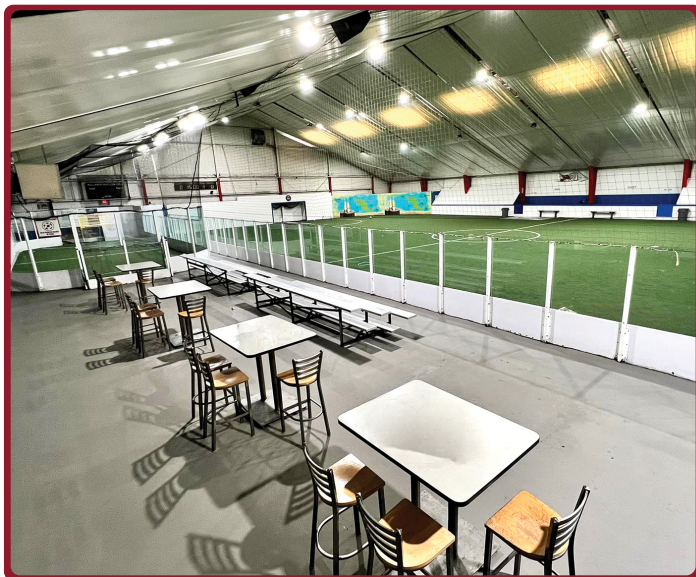
- **Clean-Span Sports Facility:** Column-free layout ideal for soccer, basketball, pickleball, golf, and family entertainment concepts.
- **Concession Area & Liquor License:** Supports high-capacity, flexible use.users.

### Nearby Tenants:



MATANKY REALTY GROUP  
200 N LASALLE ST, 2350  
312-337-1001  
MATANKY.COM

TERRI COX  
312.337.1001  
TCOX@MATANKY.COM



Information furnished regarding property for sale, rental or financing is from sources deemed reliable, but no warranty or representation is made to the accuracy thereof and same is submitted to errors, omissions, change of price, or withdrawal without notice.



**MATANKY REALTY GROUP**  
200 N LASALLE ST, 2350  
312-337-1001  
MATANKY.COM

**TERRI COX**  
312.337.1001  
TCOX@MATANKY.COM