

KEY

→ INGRESS

→ EGRESS



PORTSMOUTH, NH

1390 LAFAYETTE RD

±6,159 SF AVAILABLE FOR LEASE (SUBDIVIDABLE)



PROJECT DETAILS

1390 LAFAYETTE RD • ±6,159 AVAILABLE FOR LEASE (SUBDIVIDABLE)

PROPERTY HIGHLIGHTS

- ± 6,159 SF (Subdividable) for Lease
- Co-Tenants include Chase Bank (Proposed), Five Guys, and Newburyport Bank
- Pylon signage available
- Easy access to I-95 and RT 33
- 19,475 ADT on Lafayette Road - Route 1
- 91 parking spaces



POPULATION

3 MILE

27,264

5 MILE

43,308

7 MILE

59,277



DAYTIME POPULATION

44,679

68,920

83,355

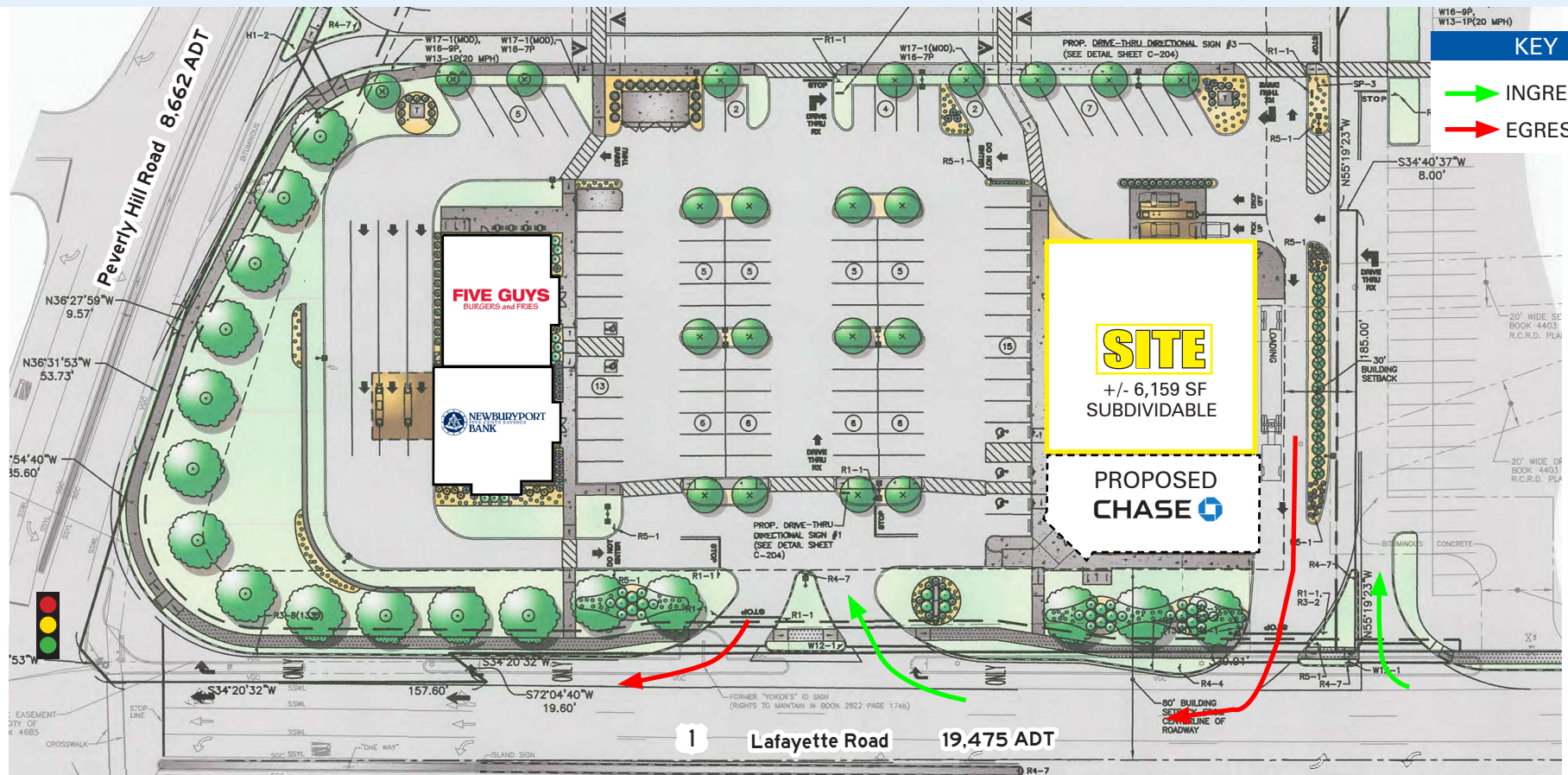


MEDIAN HH INCOME

\$113,714

\$111,754

\$117,286



AERIAL



PORTSMOUTH, NH

1390 LAFAYETTE RD

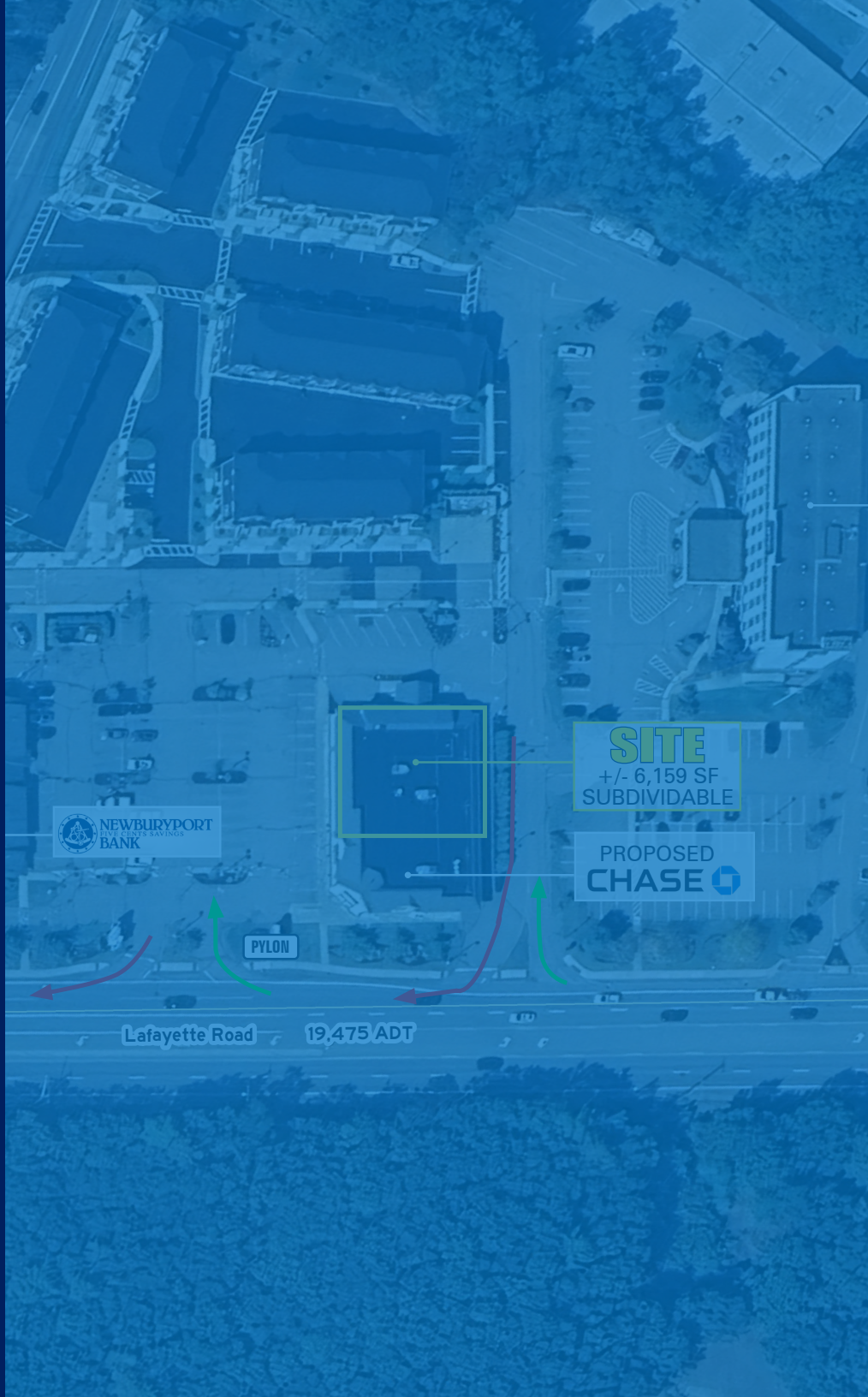
±6,159 SF SUBDIVIDABLE | AVAILABLE

JACK LYMAN

860.391.1736
JLYMAN@ATLANTICRETAIL.COM

JAKE BRENNAN

781.686.0862
JBRENNAN@ATLANTICRETAIL.COM



BOSTON
THE PRUDENTIAL CENTER
BOSTON, MA 02199
617.239.3600

- ALBANY**
- ATLANTA**
- CHARLESTON**
- CHARLOTTE**
- LOS ANGELES**
- NEW YORK CITY**
- ORLANDO**
- PITTSBURGH**
- WEST PALM BEACH**

WWW.ATLANTICRETAIL.COM

[LINKEDIN.COM/COMPANY/ATLANTIC-RETAIL-PROPERTIES](https://www.linkedin.com/company/atlantic-retail-properties)
 [INSTAGRAM.COM/ATLANTIC_RETAIL/](https://www.instagram.com/atlantic_retail/)

