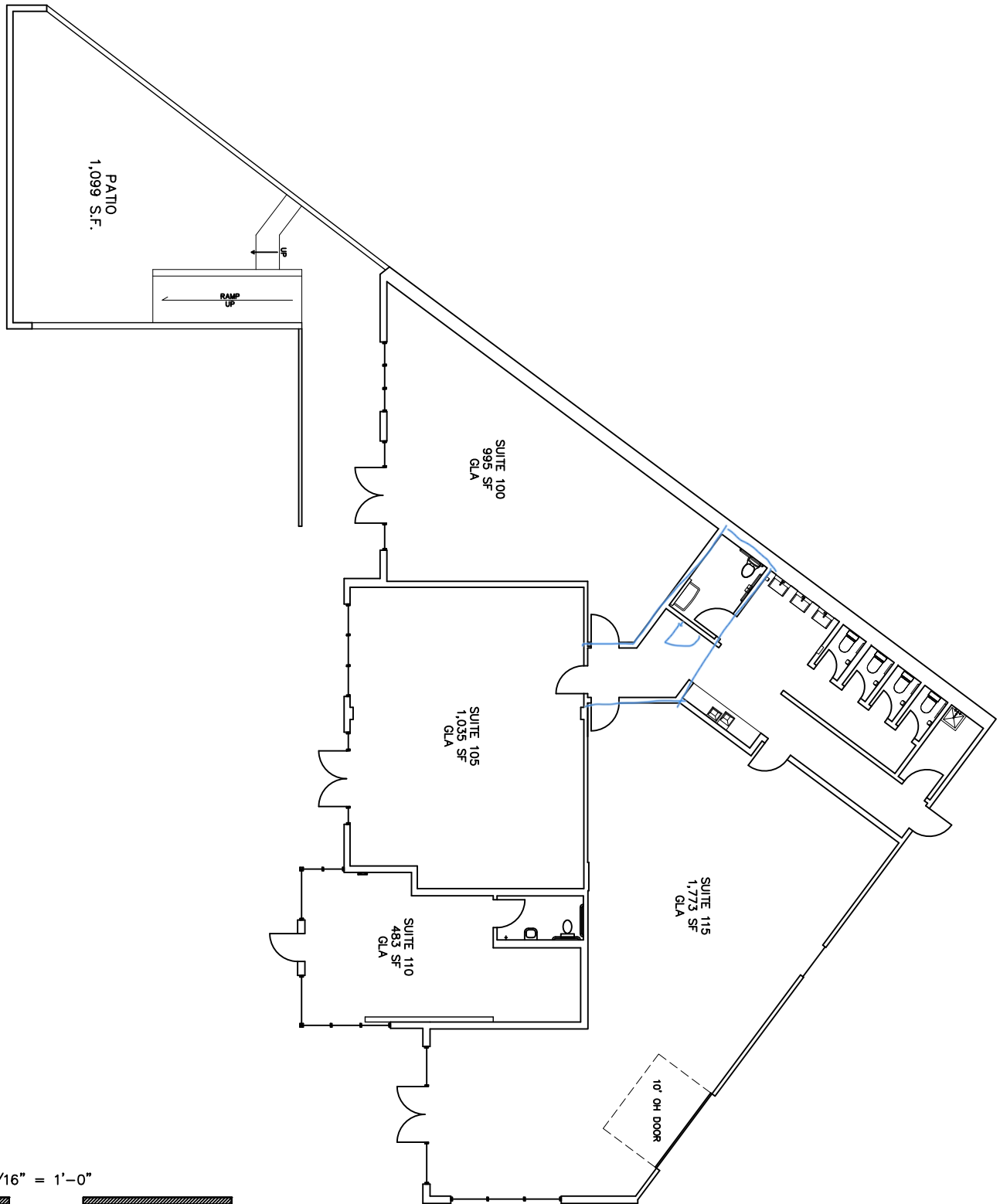


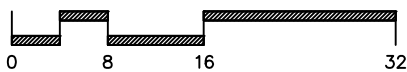
NOTE:

1. SUITE 100 GROSS LEASABLE AREA DOES NOT INCLUDE PATIO SQUARE FOOTAGE.

Total 4286 SF



SCALE: 1/16" = 1'-0"



Drawing for:
 Avison Young
 515 Congress Ave.
 Ste. 1175
 Austin, TX 78701

BUILDING 1
 2324 S. LAMAR BLVD.
 AUSTIN, TEXAS
 GROSS LEASABLE AREA: 5,385 S.F.

THE MEASUREMENTS, FLOOR PLANS,
 AND CALCULATIONS ARE ACCURATE
 USING BOMA MEASUREMENT
 STANDARDS FOR RETAIL BUILDINGS.
 ANSI/BOMA Z65.5 - 2020
 Project No.: 2434.06
 Rev. Date: April 25, 2024
 ©2024

†DIMENSIONS†
 FLOOR PLANS
 Austin, Texas
 dimensionsfloorplans.com
 Phone: (512)342-0114