



For
Lease

Office Space

2121 CRESCENT STREET, SUITE 104
MONTRÉAL (QC)

CBRE

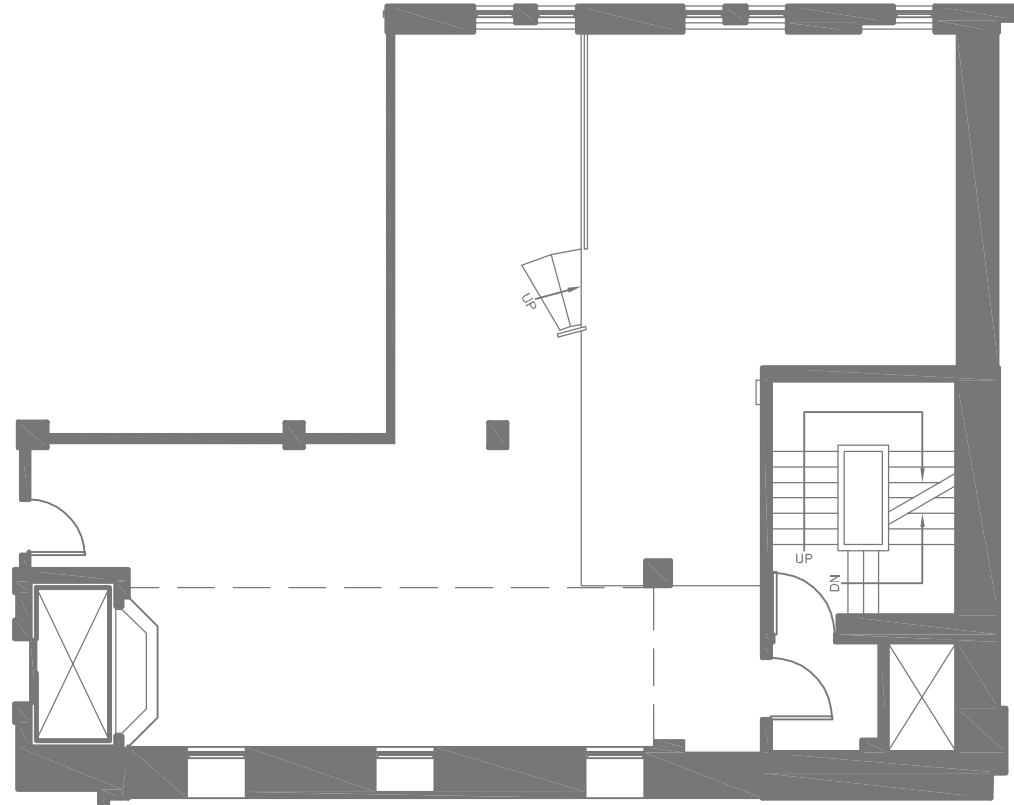
CBRE URBAN PROPERTIES | MONTREAL

Lease Terms

- + **Term**
5 years
- + **Area** (Full floor)
1,790 sq. ft.
- + **Semi-gross rent**
\$32.00
- + **Availability**
Immediate
- + **Hydro & In-suite cleaning**
Included

Floor Plan

1,790 SQ. FT.



Suite 104

- + Located on Crescent Street between De Maisonneuve Boulevard and Sherbrooke Street
- + Turnkey office space
- + The building has high-end finishes with top tier cotenants
- + 6-min walk from the Peel and Guy-Concordia metro stations

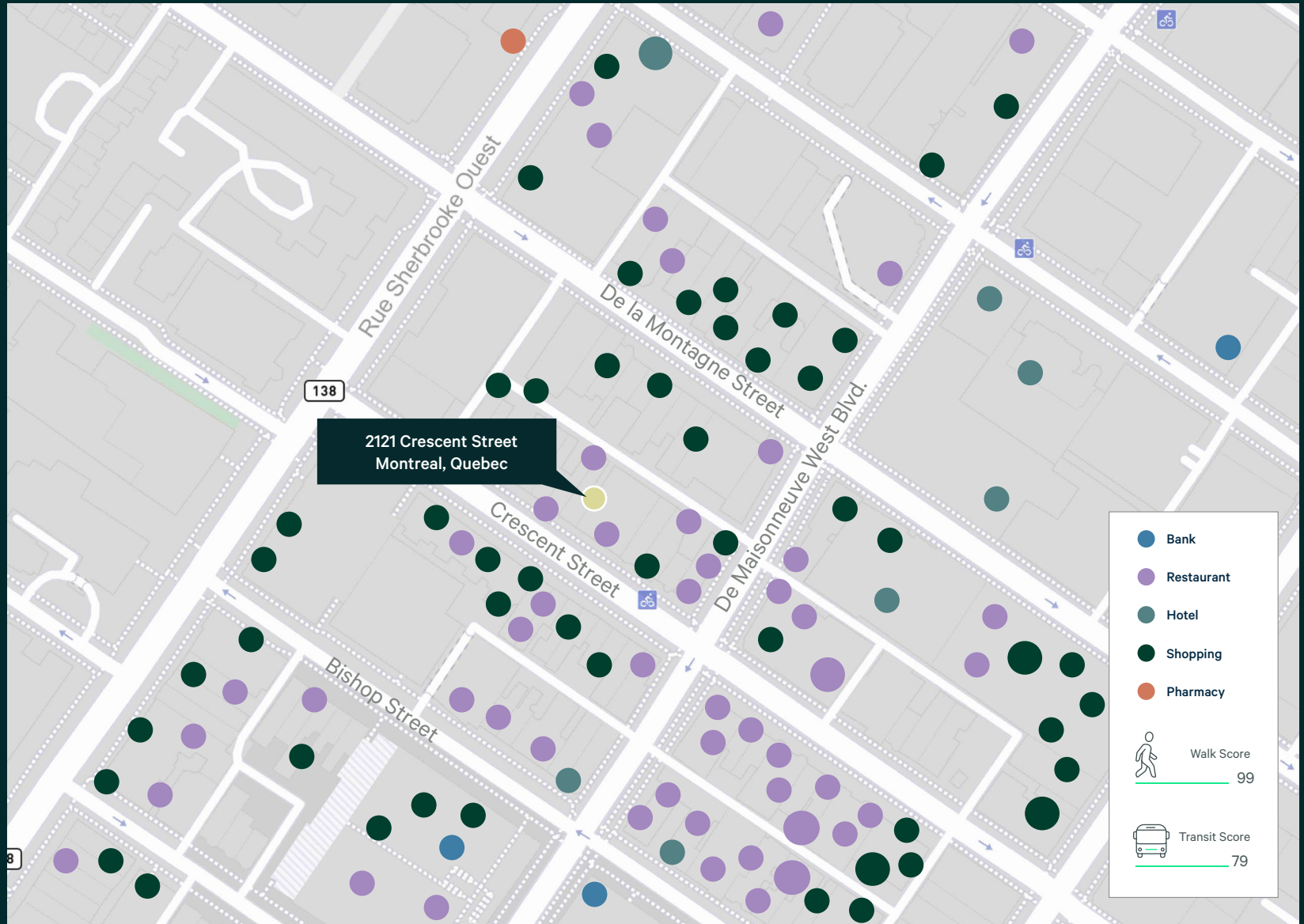


Contact Us

Christopher Rundle
Vice President
Real Estate Broker
+1 514 375 0818
christopher.rundle@cbre.com

Bryan Greenberg
Associate Vice President
Commercial Real Estate Broker
+1 514 375 2507
bryan.greenberg@cbre.com

Amanda Angela Herbu
Associate
Commercial Real Estate Broker
+1 514 375 0456
amanda.herbu@cbre.com



CBRE Limited, Real Estate Agency | 1250 René-Lévesque Blvd West, Suite 2800 | Montréal, Québec H3B 4W8 | +1 514 849 6000 | www.cbre.ca

This disclaimer shall apply to CBRE Limited, Real Estate Agency, and to all other divisions of the Corporation; to include all employees and independent contractors ("CBRE"). The information set out herein, including, without limitation, any projections, images, opinions, assumptions and estimates obtained from third parties (the "Information") has not been verified by CBRE, and CBRE does not represent, warrant or guarantee the accuracy, correctness and completeness of the Information. CBRE does not accept or assume any responsibility or liability, direct or consequential, for the Information or the recipient's reliance upon the Information. The recipient of the Information should take such steps as the recipient may deem necessary to verify the Information prior to placing any reliance upon the Information. The Information may change and any property described in the Information may be withdrawn from the market at any time without notice or obligation to the recipient from CBRE. CBRE and the CBRE logo are the service marks of CBRE Limited and/or its affiliated or related companies in other countries. All other marks displayed on this document are the property of their respective owners. All Rights Reserved. Mapping Sources: Canadian Mapping Services canadamapping@cbre.com; DMTI Spatial, Environics Analytics, Microsoft Bing, Google Earth.