



Park Center

801 N. Parkcenter Drive, Santa Ana, California



NEWMARK

FOR LEASE
SANTA ANA, CA



801 N. Parkcenter Drive

801 Parkcenter is a two-story, 32,500 square foot, multi-tenant office building, offering extensive glass lining and a well landscaped atrium with surface for easy park and walk up. The Property is conveniently located near the junction of the 5 and 55 Freeways at the intersection of 4th Street and Tustin Avenue, and is in close proximity to the Orange County Court Buildings, John Wayne Airport and the coastal neighborhoods of Irvine and Newport Beach. The Property is also within walking distance to numerous restaurants, hotels and retail and entertainment amenities.



**Two-Story Atrium
Office Building**



**Free Surface
Parking**



**New Strong
Ownership**



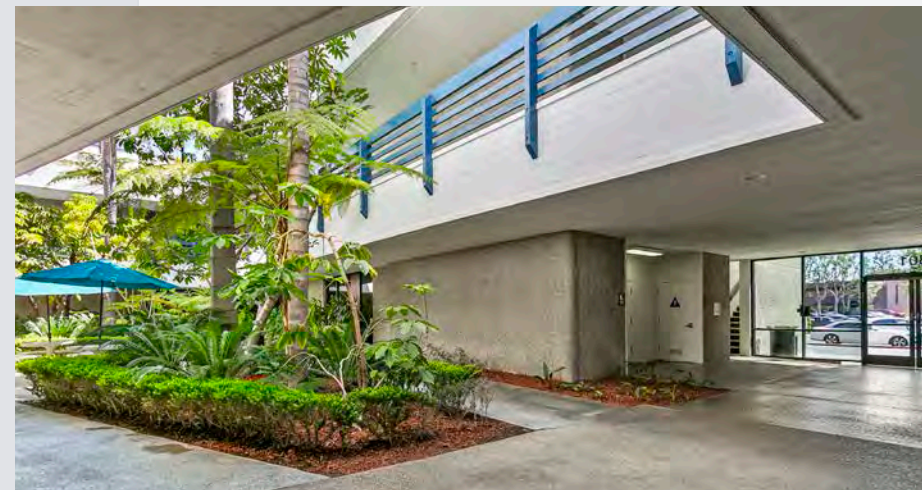
**Close Proximity to
the 5 and 55 Freeways**



**Walking Distance
to Plethora Amenities**



**Ready To Move
In Suites**





Park Center

801 N. PARK CENTER DR

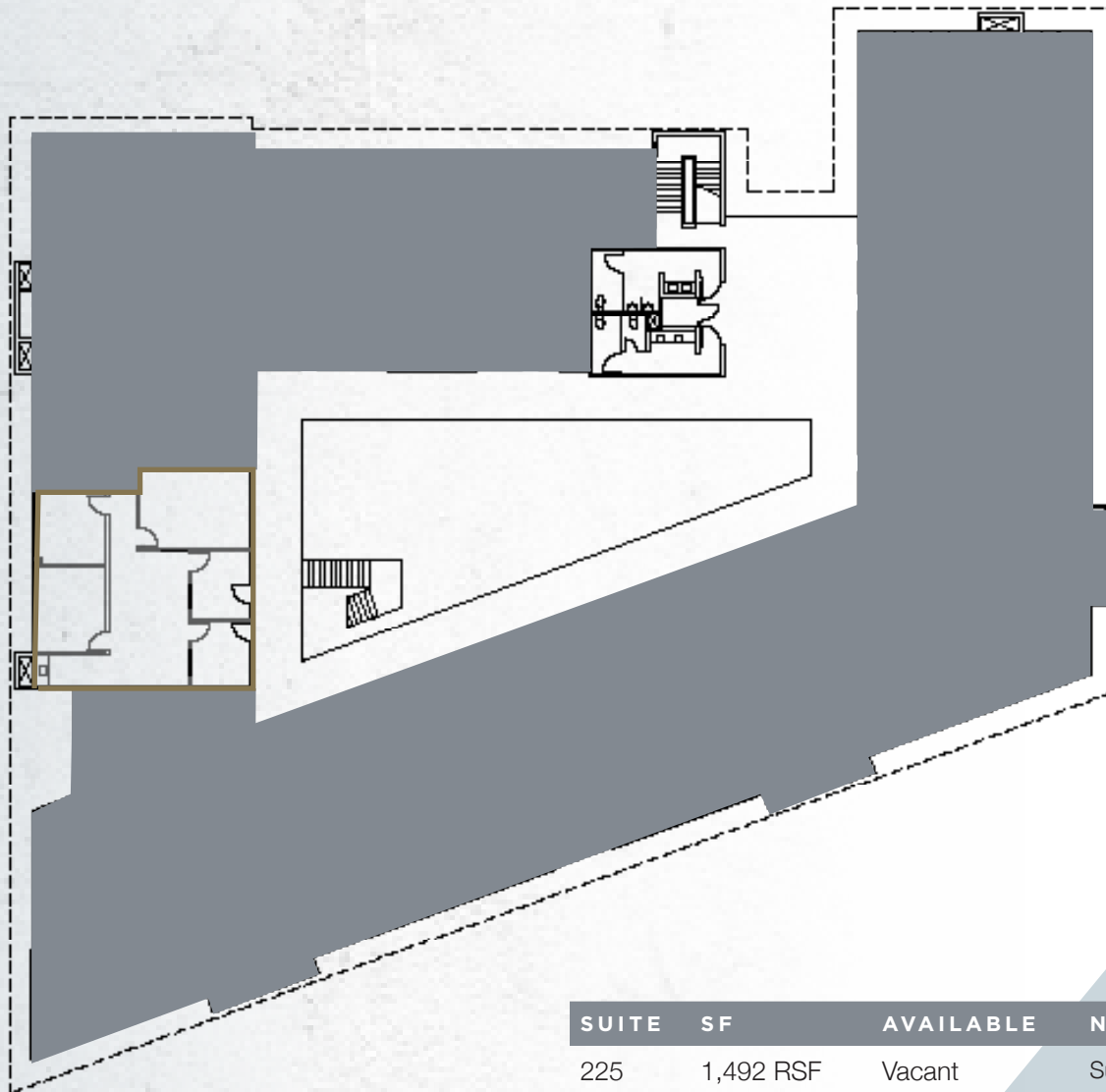


SANTA ANA CALIFORNIA

Suite 225 Floor Plan

801 N.
PARK
CENTER
DRIVE

Suite
225



SUITE	SF	AVAILABLE	NOTES
-------	----	-----------	-------

225	1,492 RSF	Vacant	Suite offers ample glass lining with 3 offices, conference room, dedicated reception area, open area and kitchenette.
-----	-----------	--------	---

[View Video Tour](#)



Park Center

801 N. Parkcenter Drive
Santa Ana, California

Corporate License #01355491

The information contained herein has been obtained from sources deemed reliable but has not been verified and no guarantee, warranty or representation, either express or implied, is made with respect to such information. Terms of sale or lease and availability are subject to change or withdrawal without notice.

Richard P. Sung

Senior Managing Director

t 949-608-2178

m 408-205-3412

richard.sung@nmrk.com

CA RE Lic. #01953211

Joseph Inouye

Associate

t 949-223-6117

m 714-299-7097

joseph.inouye@nmrk.com

CA RE Lic. #02419388

NEWMARK

18401 Von Karman Avenue, Suite 150
Irvine, CA 92612

