

# 645 ELLIOTT

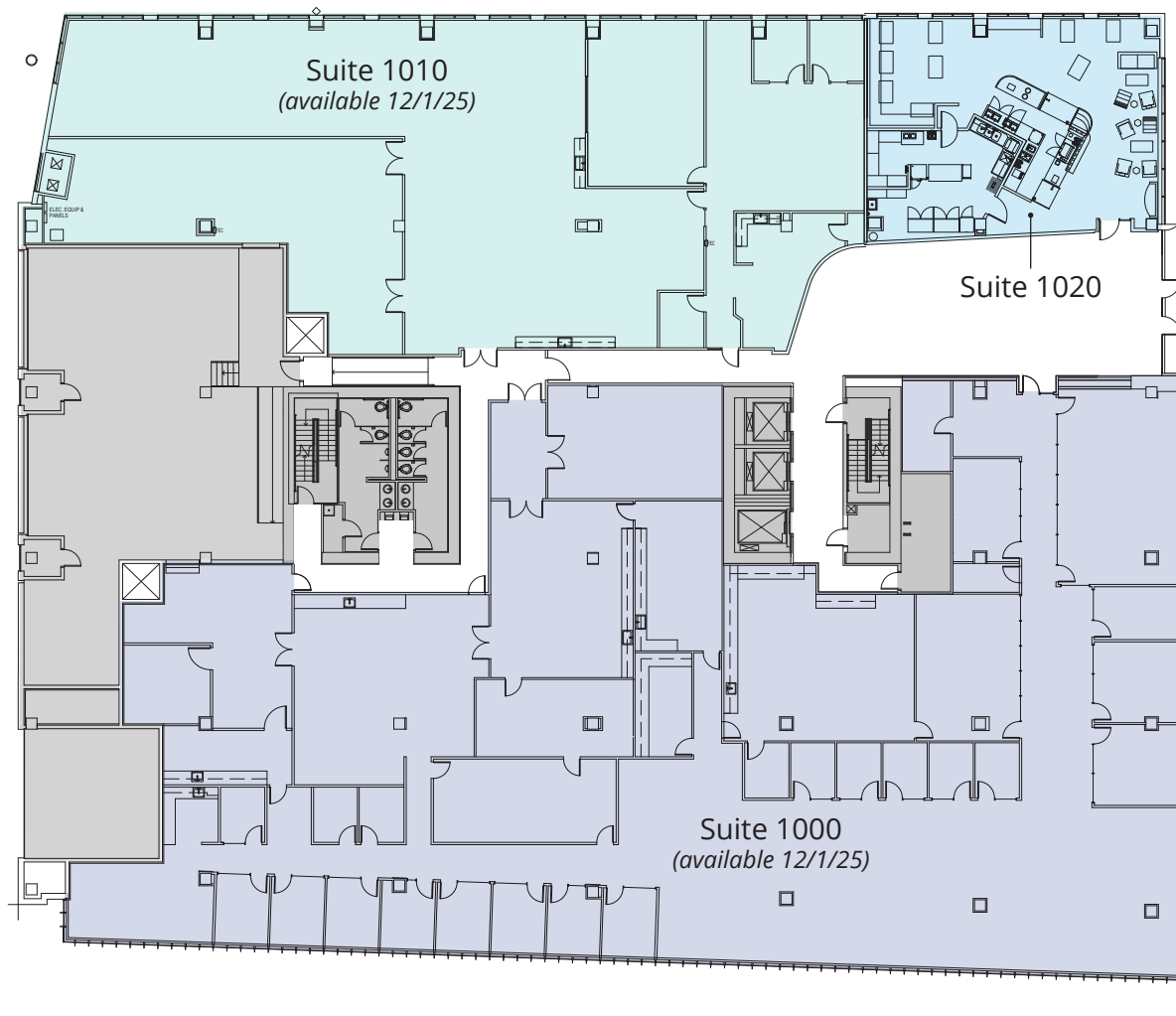


## NORTH BUILDING

### 1st Floor

|              |             |
|--------------|-------------|
| Suite 1000 * | ±19,127 RSF |
| Suite 1010 * | ±9,163 RSF  |
| Suite 1020   | ±2,505 RSF  |

\* available 12/1/25



645 ELLIOTT

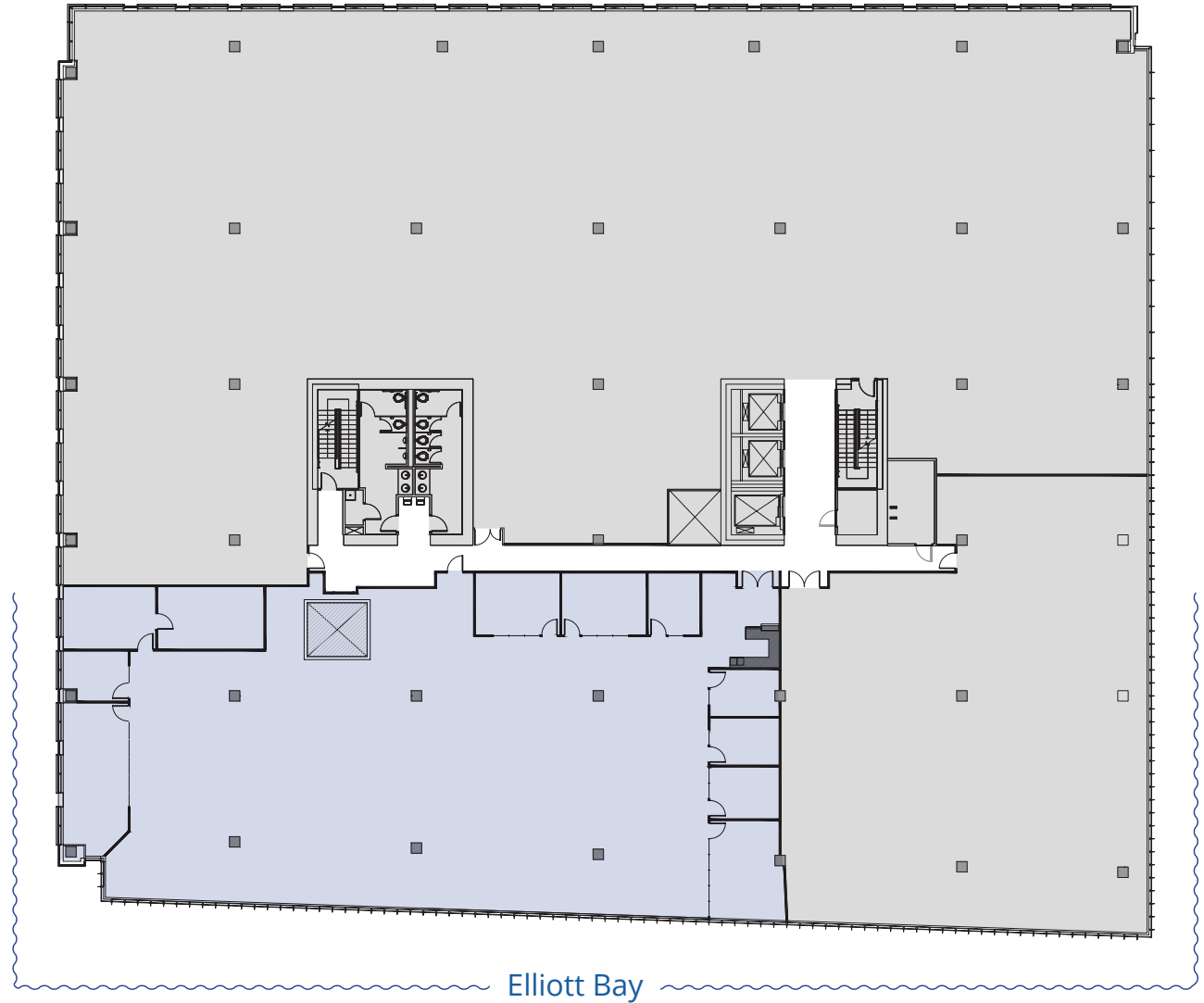


# NORTH BUILDING

3rd Floor

Suite 3005

±10,348 RSF



645 ELLIOTT



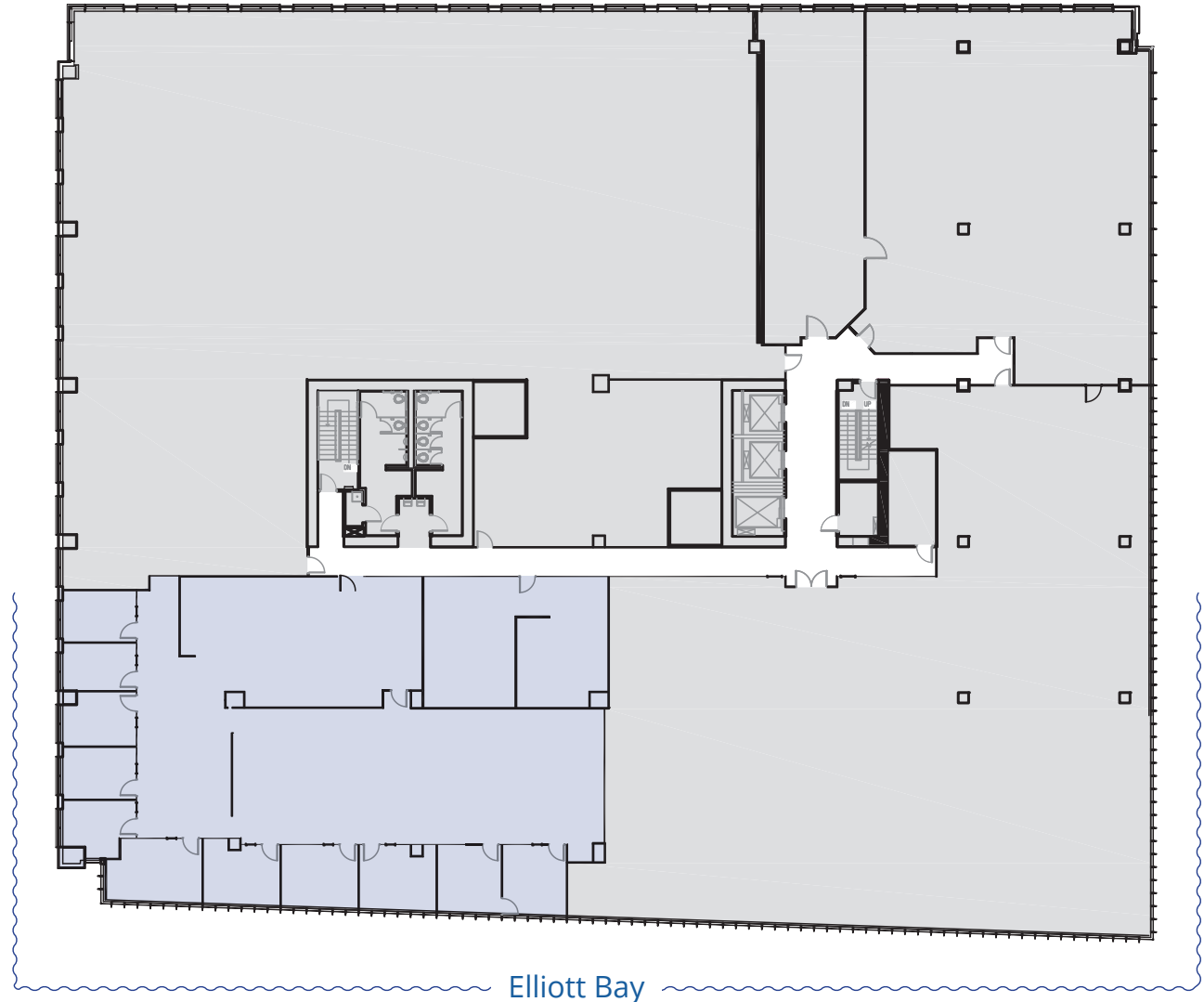
Colliers

# NORTH BUILDING

4th Floor

Suite 4005

±7,637 RSF



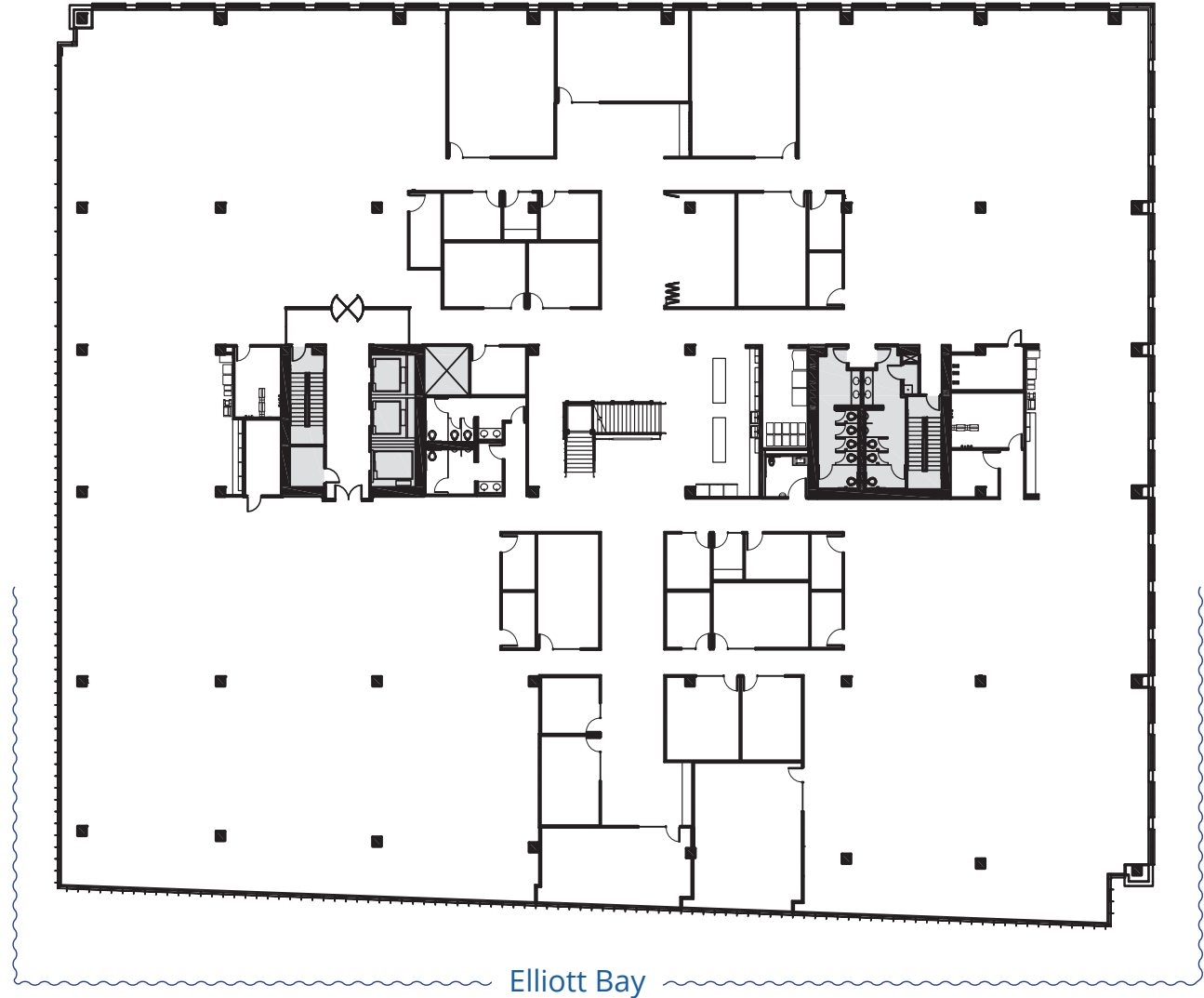
Elliott Bay

# 635 ELLIOTT



## SOUTH BUILDING

|                  |            |             |
|------------------|------------|-------------|
| <b>3rd Floor</b> | Full Floor | ±47,965 RSF |
| <b>4th Floor</b> | Full Floor | ±47,965 RSF |



Elliott Bay

# 645+435 CELLIOTT



**Colliers Seattle**

601 Union Street, Suite 5300  
Seattle, WA 98101  
colliers.com

**Geoff Pendergast**

Senior Vice President  
+1 425 453 4544  
geoff.pendergast@colliers.com

**Rick Hart**

Senior Vice President  
+1 425 453 4543  
rick.hart@colliers.com

**Joe Conner**

Associate Vice President  
+1 206 223 1423  
joe.conner@colliers.com