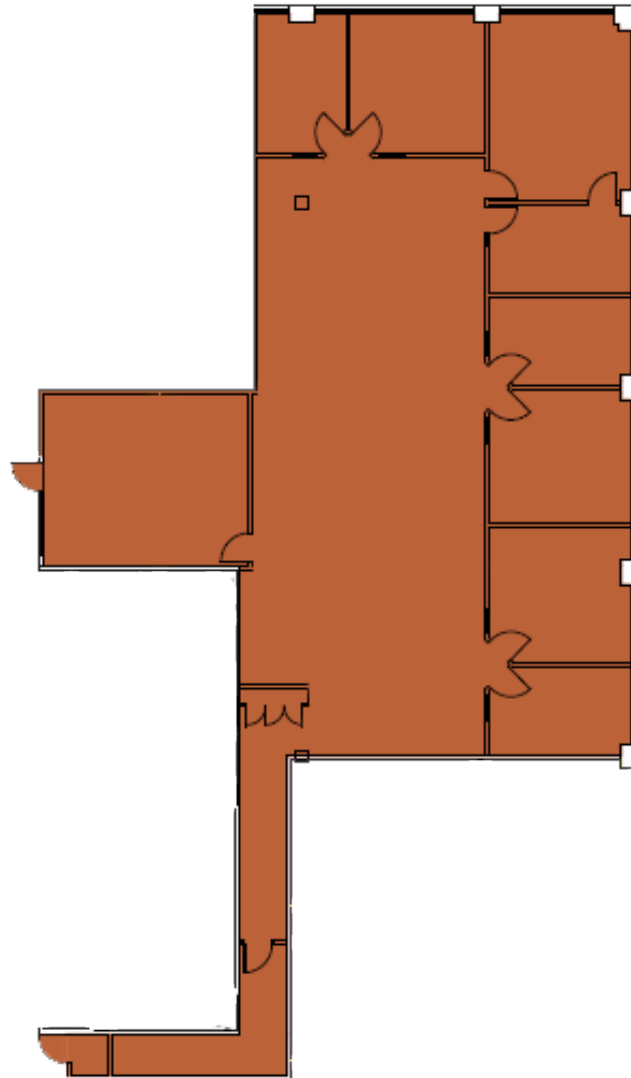


202E | 3,900 SF

387 Shuman Blvd \ Naperville, IL



SPACE NOTES

- Open Space for Workstations
- Kitchenette
- Vanilla Box Space Ready for Tenant Buildout



KYLE HARRIS
630.716.3147
KHarris@VersaRES.com

RYAN MOEN, SIOR
630.480.6346
RMoen@VersaRES.com

JOHN MILLNER, CCIM
630.480.6342
JMillner@VersaRES.com

1 MID AMERICA PLAZA, 3RD FLOOR
OAKBROOK TERRACE, IL 60181
630.480.6413

EXCLUSIVELY LISTED BY
VERSA
REAL ESTATE SERVICES