

+/- 30,000 SF FOR SALE
2 RETAIL SPACES AVAILABLE



1020 N REYNOLDS RD



441 SPENCER ST

***441 SPENCER ST - SHOWROOM**



IMPORT AUTOMOTIVE INVESTMENT

1020 N REYNOLDS RD, TOLEDO, OH 43615 | 441 SPENCER ST, TOLEDO, OH 43609

CONTACT:

David Mrachko
DavidMrachko@HannaCRE.com
216.214.1197

David McGinnis
DavidMcGinnis@HowardHanna.com
216.214.1197

UNIQUE INVESTMENT OPPORTUNITY

1020 N Reynolds Rd, Toledo, OH 43615 | 441 Spencer St, Toledo, OH 43609

PROPERTY OVERVIEW

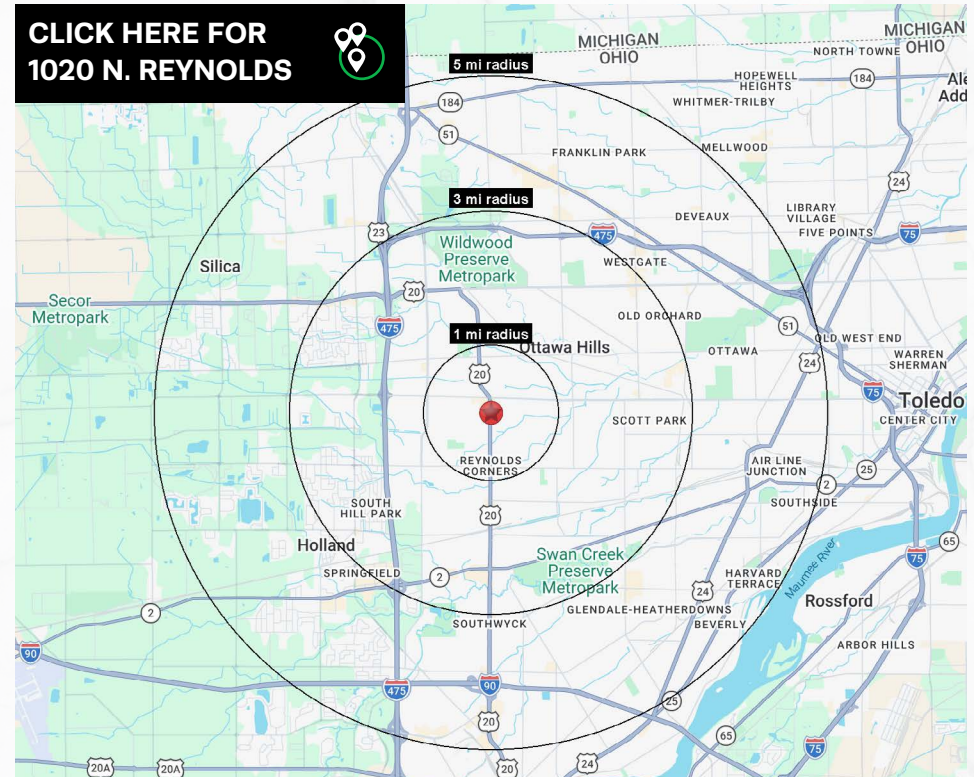
PROPERTY SUMMARY

- Presenting a rare opportunity to acquire the Import Automotive Services business. This sale includes two locations, an inventory of extremely rare OEM parts, all equipment, and a variety of vehicles. The collection of rare and vintage vehicles includes Jaguar, Rolls Royce, Maserati, and Alfa Romeo. One dedicated Master Tech will also be staying with the business.
- Current owner will assist in training buyer – **Import Automotive Services** has been providing service to a devoted international customer base for decades, with two retail locations in Toledo, OH.
- Portfolio listing includes **two locations, rare vehicles & parts, and service business**
- **Both sites have fenced lots, commercial zoning, and same owner**

1020 N Reynolds Rd, Toledo, OH 43615:

- Parcel ID # and Parcel Address
- 2059404 – 1002 N Reynolds
- 2059391 – 1020 N Reynolds
- 2059387 – 1024 N Reynolds
- 2059384 – 5145 Ancil
- 2059381 – 5141 Ancil
- Total is approximately 1.2 acres
- 2 Buildings: 3,060 SF shop and 2,644 SF retail building

CLICK HERE FOR
1020 N. REYNOLDS



DEMOGRAPHICS

	1-MILE	3-MILE	5-MILE
POPULATION	10,299	75,720	131,560
HOUSEHOLDS	4,541	32,704	57,185
AVERAGE HH INCOME	\$40,503	\$60,680	\$75,082
MEDIAN HH INCOME	\$30,439	\$46,740	\$56,728
DAYTIME POPULATION	15,194	63,597	107,150

UNIQUE INVESTMENT OPPORTUNITY

1020 N Reynolds Rd, Toledo, OH 43615 | 441 Spencer St, Toledo, OH 43609

PROPERTY OVERVIEW

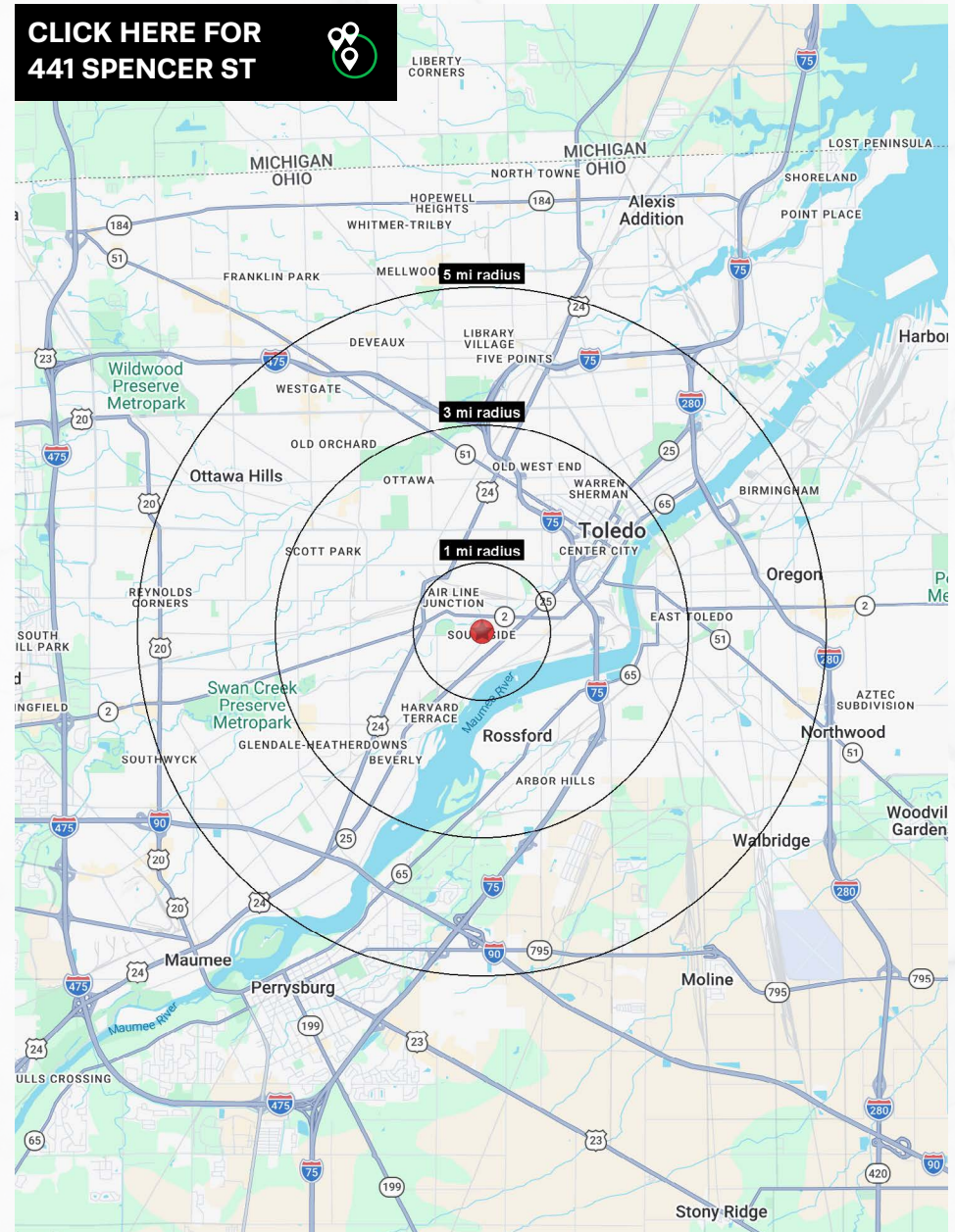
PROPERTY SUMMARY

441 Spencer St, Toledo, OH 43609:

- Parcel ID # and Parcel Address
- 0721767 – 441 Spencer St
- 0721777 – 1338 South Ave
- 0721854 – 1332 South Ave
- 0721857 – 1334 South Ave
- 0721867 – 1356 South Ave
- Total is approximately 1.75 acres
- 2 buildings: dealership building (showroom/parts/service bays) and shop

DEMOGRAPHICS	1-MILE	3-MILE	5-MILE
POPULATION	10,299	75,720	131,560
HOUSEHOLDS	4,541	32,704	57,185
AVERAGE HH INCOME	\$40,503	\$60,680	\$75,082
MEDIAN HH INCOME	\$30,439	\$46,740	\$56,728
DAYTIME POPULATION	15,194	63,597	107,150

CLICK HERE FOR
441 SPENCER ST



UNIQUE INVESTMENT OPPORTUNITY

1020 N Reynolds Rd, Toledo, OH 43615 | 441 Spencer St, Toledo, OH 43609

MARKET OVERVIEW

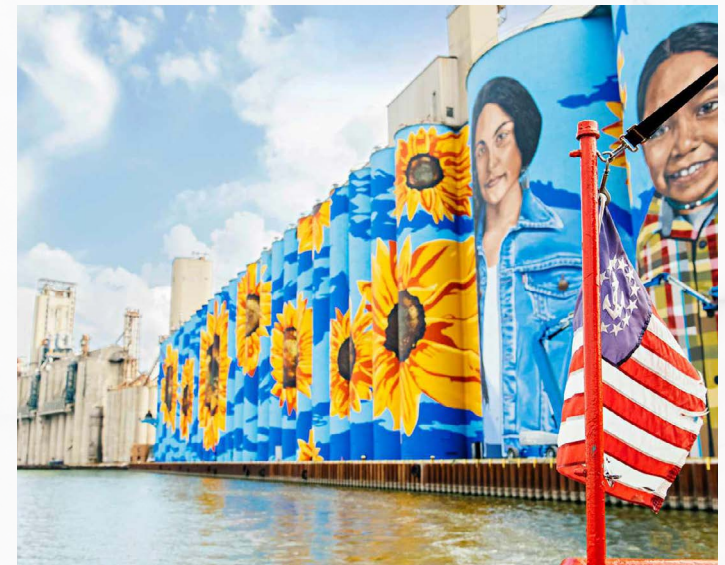
TOLEDO, OH

Toledo is a northwest Ohio city on Lake Erie, best known as a historic manufacturing and transportation hub with strong ties to glass production, automotive supply, and shipping. It sits along the Maumee River near the Michigan border, giving it strategic access to regional trade routes and the broader Great Lakes network.

Today, Toledo blends industrial legacy with healthcare, education, logistics, and redevelopment activity. It has major institutions like ProMedica and The University of Toledo, a revitalized downtown, and assets such as the Port of Toledo, the Toledo Museum of Art, and a strong warehouse and distribution presence. From a commercial real estate standpoint, Toledo is often seen as a practical, value-driven market with opportunity in industrial, medical office, neighborhood retail, and adaptive reuse.



THE UNIVERSITY OF TOLEDO



UNIQUE INVESTMENT OPPORTUNITY

1020 N Reynolds Rd, Toledo, OH 43615 | 441 Spencer St, Toledo, OH 43609

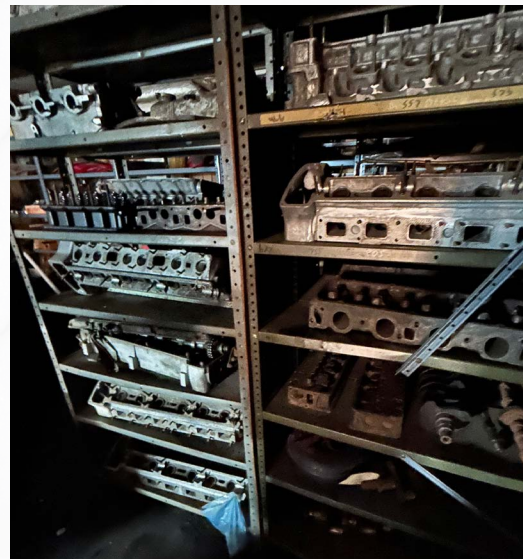
PICTURES



UNIQUE INVESTMENT OPPORTUNITY

1020 N Reynolds Rd, Toledo, OH 43615 | 441 Spencer St, Toledo, OH 43609

PICTURES



Showroom Vehicles
* See appraisal on next page

UNIQUE INVESTMENT OPPORTUNITY

FINANCIAL ANALYSIS

1020 N Reynolds Rd, Toledo, OH 43615 | 441 Spencer St, Toledo, OH 43609

PREVIOUS APPRAISAL NOTES:

- **Business Value est.:** \$5 Million
- **Machine Shop Value est.:** \$1.5 Million
- **MT-4 & MT-6 OSCA** (Officine Specializzate Costruzione Automobili – founded in 1947 by 3 Maserati bros.)
- **PARTS:**
 - “Name Your Price” because EXTREMELY hard to find
 - **Conservative value est.:** \$800,000
- **Exhaust Parts & Assemblies all OEM originals est.:** \$550,000

PROFESSIONAL APPRAISAL 2010 – 2012: Some cars sold. Business value, machine shop and parts have appreciated

VEHICLES IN SHOWROOM AT COST VALUES:

• 1967 Austin Healey 3000	\$49,300
• 1953 MG TD	\$16,000
• 1961 Daimler SP 250	\$38,400
• 1968 Triumph TR250	\$40,000
• 1974 Rolls Royce Silver Shadow	\$39,900
• 1981 Delorian	\$29,500
• 1968 Alfa Romeo Spider	\$12,300
• 1989 Jaguar XJS Rouge	\$22,600
• 1974 Jaguar XKE Conv	\$65,900
• 1994 Jaguar XJS Conv	\$22,500
• 1985 Rolls Royce Silver Spirit	\$15,600
• 1961 Maserati GT3500	\$300,000
(#5 of 9 built est value)	
• 1974 Rolls Royce Silver Shadow	\$39,900
• 1950 Mark V Touring Sedan	\$60,000
• 1974 Rolls Royce Silver Shadow	\$39,900
• Equipment Est value at Machine shop	\$150,000

• Partial Equipment est value at other shop	\$100,000
• Estimated Business Value	\$5,000,000
• Total for vehicles in showroom at average price	\$3,514,300
• Sum of properties plus buildings	\$336,784
• Total sum of prices in this column	\$10,451,084
• Estimated value of cars at other lot (Reynolds road)	\$45,000
• Value of used parts pulled and shelved in trailer	\$216,117.88
• Total value of all sums on page	\$12,062,201.88

MT-4 MT-6 Osca parts. Est value:

800,000 – On these parts you can pretty much name your price simply because at the time of purchase there were only 12 of these vehicles left. These parts are extremely hard to come by. I left a conservative value on them.

550,000 – Exhaust parts and assemblies upstairs. This is also an estimated value because these are mostly for older vehicles. All of these are OEM originals.

UNIQUE INVESTMENT OPPORTUNITY

1020 N Reynolds Rd, Toledo, OH 43615 | 441 Spencer St, Toledo, OH 43609

PICTURES



Jaguar Picnic Basket
** Contact agents for details*



UNIQUE INVESTMENT OPPORTUNITY

1020 N Reynolds Rd, Toledo, OH 43615 | 441 Spencer St, Toledo, OH 43609

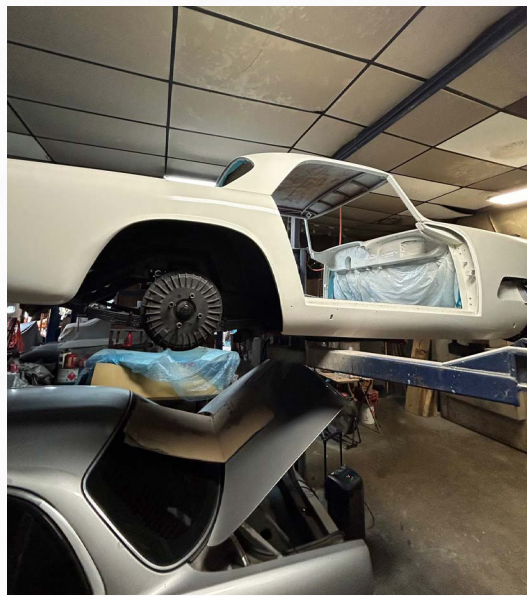
PICTURES – INFO



Maserati 3500 GT

The nine 3500 GT(I) produced in Bianco Gardenia were manufactured: 3 in 1960, 5 in 1961, 1 in 1962.

On total of 9 cars, the # AM101*1516* was the fifth produced in Bianco Gardenia color.



AM 101 – 3500 Touring Coupe – Info

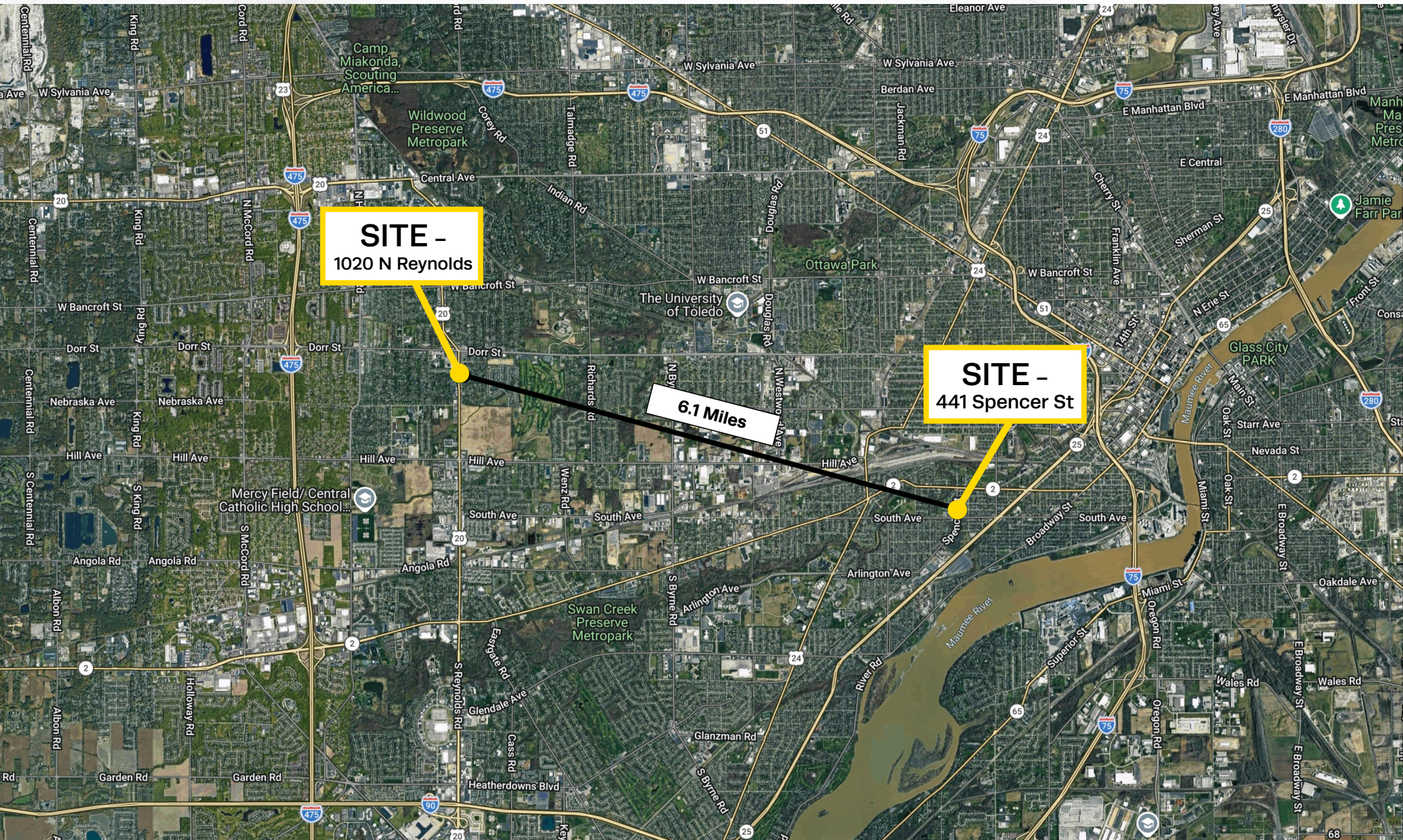
Chassis #	Model	Body	Displacement	Gearbox Type
AM101*151*6*	3500GT	Touring	3500 cc Carburettors	Manual ZF S.5.17

External Color	Interior Leather	Date of Production	Delivery Area	Right Hand Drive
Bianco Gardenia (white)	Black	04/05/1961	Roma	No

UNIQUE INVESTMENT OPPORTUNITY

1020 N Reynolds Rd, Toledo, OH 43615 | 441 Spencer St, Toledo, OH 43609

DISTANCE MAP



UNIQUE INVESTMENT OPPORTUNITY

1020 N Reynolds Rd, Toledo, OH 43615 | 441 Spencer St, Toledo, OH 43609

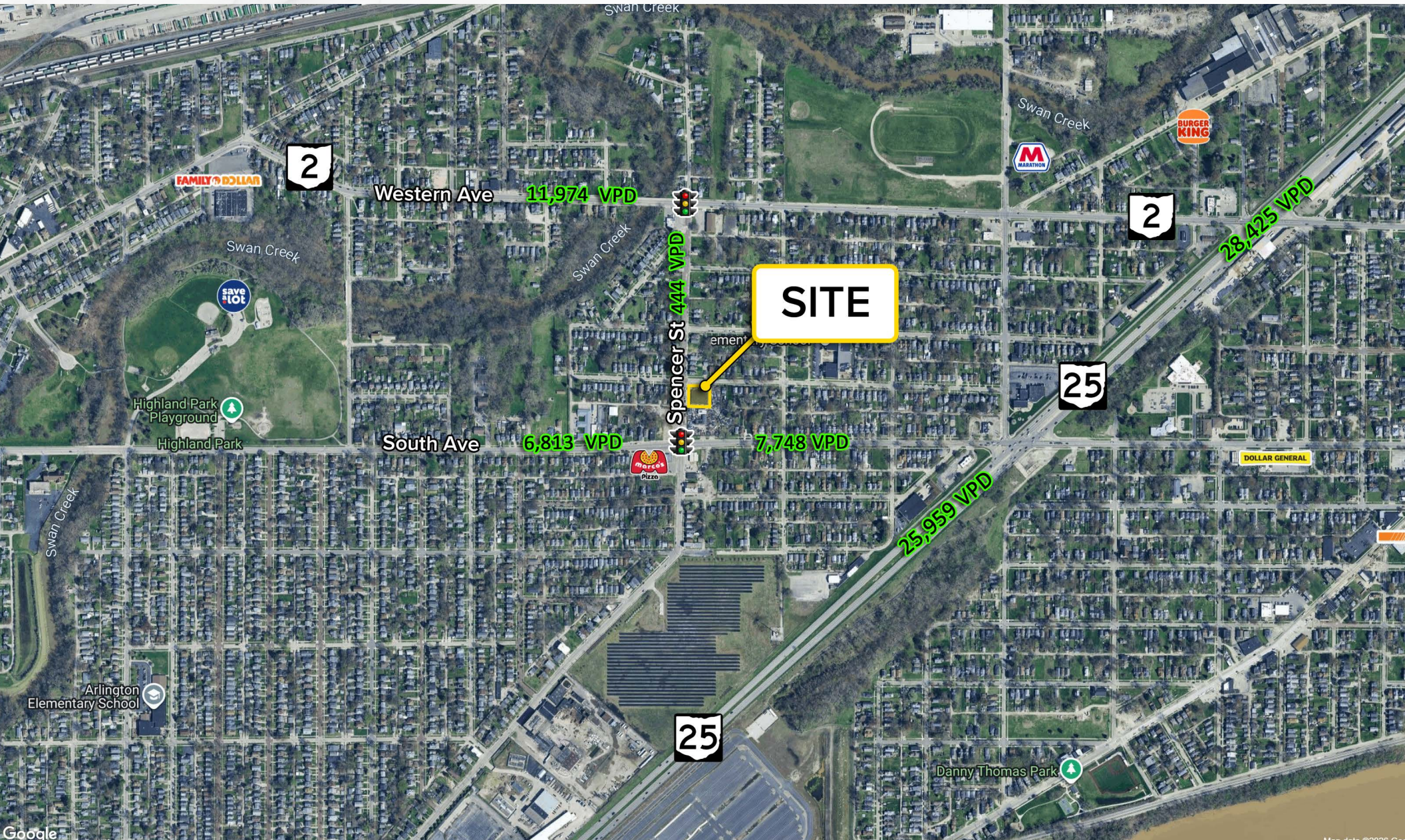
MICRO AERIAL – SPENCER ST



UNIQUE INVESTMENT OPPORTUNITY

1020 N Reynolds Rd, Toledo, OH 43615 | 441 Spencer St, Toledo, OH 43609

MACRO AERIAL - SPENCER ST



UNIQUE INVESTMENT OPPORTUNITY

1020 N Reynolds Rd, Toledo, OH 43615 | 441 Spencer St, Toledo, OH 43609

MICRO AERIAL – REYNOLDS RD



UNIQUE INVESTMENT OPPORTUNITY

1020 N Reynolds Rd, Toledo, OH 43615 | 441 Spencer St, Toledo, OH 43609

MACRO AERIAL – REYNOLDS RD

