

1660-1700 Kirkham Street, Oakland, CA 94607

±27,270 SF Available For Lease



±27,270  
Square Feet



Fully  
Sprinklered



±18'-21'  
Clear Height



3 Dock Positions  
2 Grade Doors



400 Amps  
Power

Tom Damaschino, SIOR  
+1 510 599 1189  
tom.damaschino@kbcadvisors.com  
DRE License# 01261227

Kevin Kennick  
+1 925 330 1601  
kevin.kennick@kbcadvisors.com  
DRE License# 02110600

Owned by:



# Property Overview



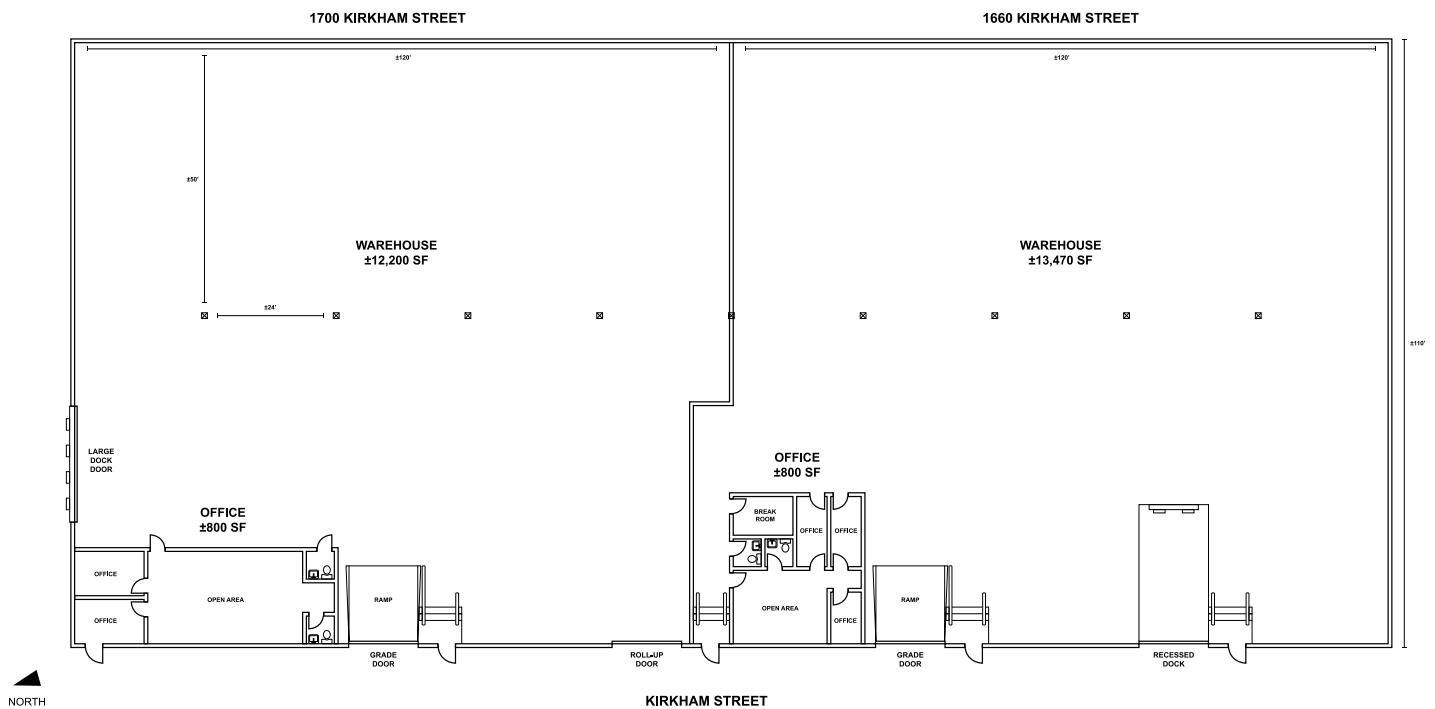
## 1700 KIRKHAM STREET

<b>SIZE</b>	±13,000 SF
<b>OFFICE SIZE</b>	±800 SF
<b>DOCK POSITIONS</b>	2
<b>DRIVE-IN DOORS</b>	1
<b>CLEAR HEIGHT</b>	±18'-21'
<b>POWER</b>	200 Amps @ 240 Volts*
<b>SPRINKLER SYSTEM</b>	Wet
<b>COLUMN SPACING</b>	±24' x 50'
<b>UPGRADES</b>	Seismic Bracing
<b>AVAILABLE</b>	Now

## 1660 KIRKHAM STREET

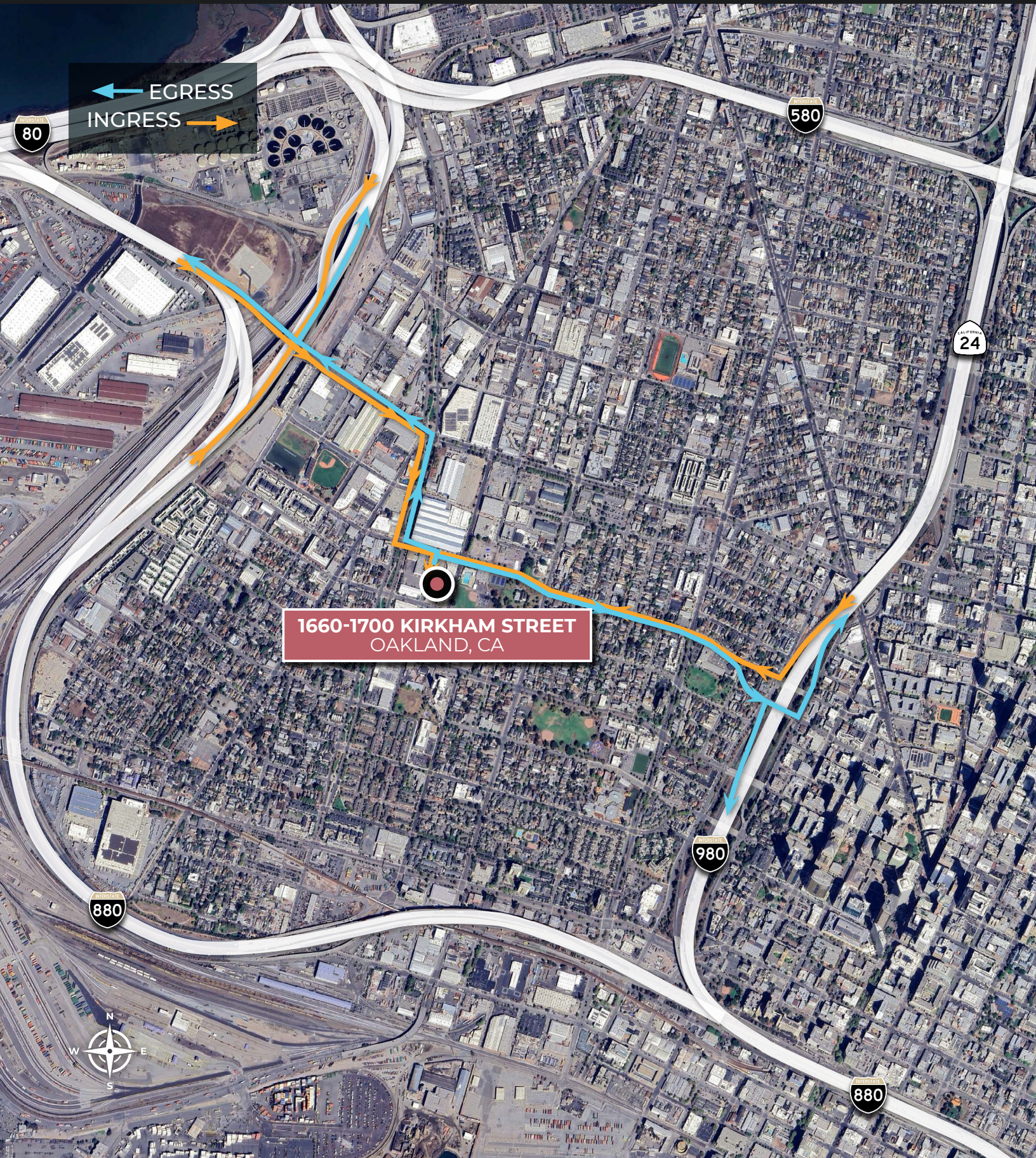
<b>SIZE</b>	±14,270 SF
<b>OFFICE SIZE</b>	±800 SF
<b>DOCK-HIGH DOORS</b>	1 (Recessed)
<b>DRIVE-IN DOORS</b>	1
<b>CLEAR HEIGHT</b>	±18'-21'
<b>POWER</b>	200 Amps @ 240 Volts*
<b>SPRINKLER SYSTEM</b>	Wet
<b>LIGHTING</b>	Motion Sensor
<b>COLUMN SPACING</b>	±24' x 50'
<b>UPGRADES</b>	Seismic Bracing
<b>AVAILABLE</b>	Now

\* Tenant to confirm

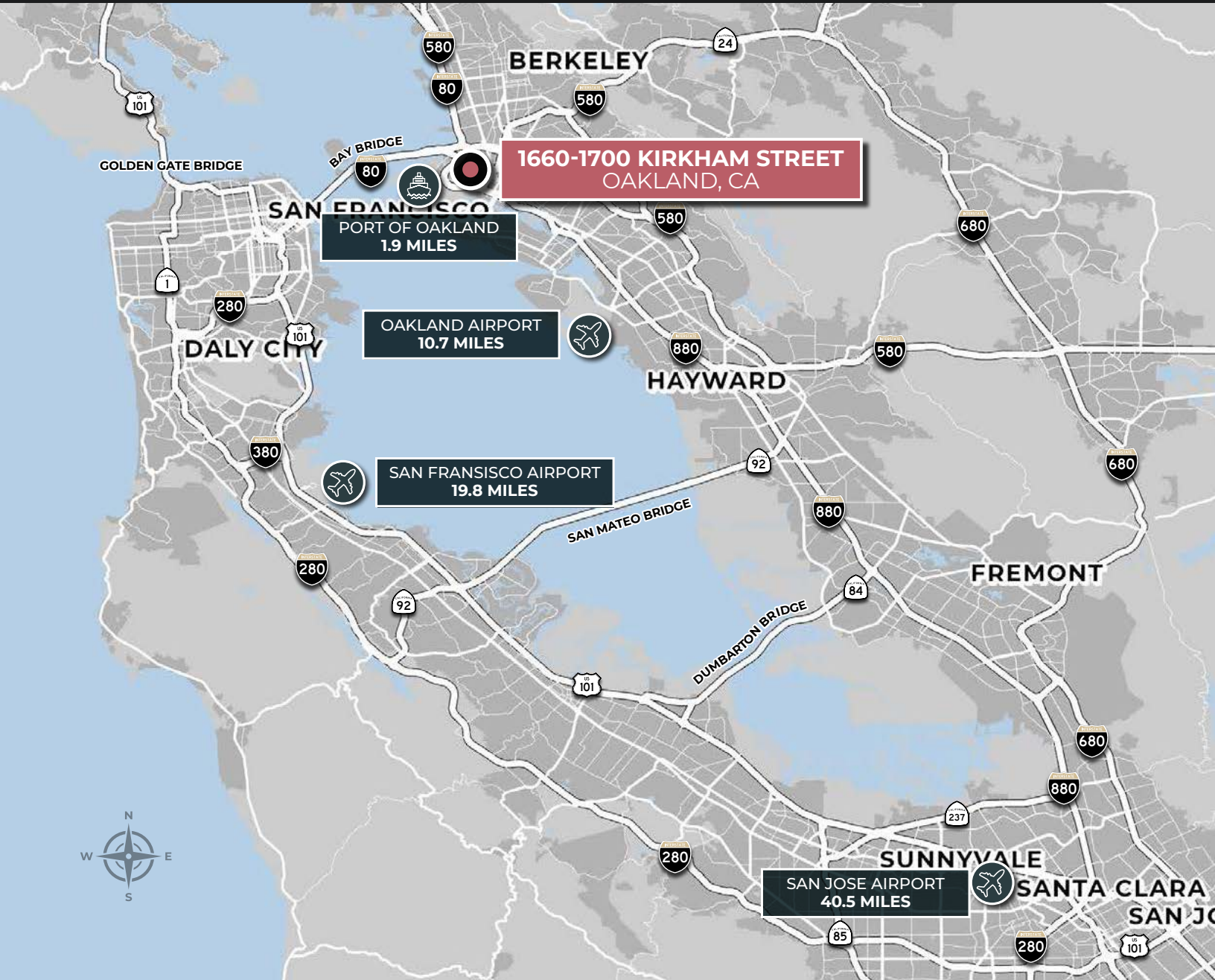


Plans not to scale & subject to change

# Access Map



# Regional Map



Tom Damaschino, SIOR  
+1 510 599 1189  
tom.damaschino@kbcadvisors.com  
DRE License# 01261227

Kevin Kennick  
+1 925 330 1601  
kevin.kennick@kbcadvisors.com  
DRE License# 02110600

Owned by:



© 2026 KBC ADVISORS This information has been obtained from sources believed to be reliable but has not been verified for accuracy or completeness, and KBC Advisors disclaims any guarantees, warranties or representations, express or implied, as to the completeness or accuracy as to the information contained herein. You should conduct a careful, independent investigation of the property and verify all information. Any reliance on this information is solely at your own risk. The KBC ADVISORS logo is a service mark of KBC ADVISORS. All other marks displayed on this document are the property of their respective owners. Photos herein are the property of their respective owners. Use of these images without the express written consent of the owners is prohibited.

