

SALE

2 Daytona Beach Office Buildings - 1 Parcel

240 NORTH RIDGEWOOD AVENUE

Daytona Beach, FL 32114

PRESENTED BY:

CARL W. LENTZ IV, MBA, CCIM

O: 386.566.3726

carl.lentz@svn.com

FL #BK3068067

PROPERTY SUMMARY



OFFERING SUMMARY

SALE PRICE:	\$1,350,000
BUILDING SIZE:	12,058 SF
LOT SIZE:	0.66 Acres
YEAR BUILT:	1980
ZONING:	RDD3 - City of Daytona Beach
TRAFFIC COUNT:	27,000
APN:	533902530051

PROPERTY HIGHLIGHTS

- 2 Office Buildings in Downtown Daytona Beach- 1 Parcel ID
- Located Just North of ISB - Across the Street From the Justice Center
- Concrete Construction With Secure Parking- 33+ Spaces
- 240 Ridgewood- 7,466 SF Built in 1956- Currently Vacant For End User
- 2 Stories With Elevator
- New HVAC System and Hurricane Windows
- 244 Ridgewood- 4,592 SF Built in 1980-2 Small Tenants
- RDD3 Zoning in the City of Daytona Beach - Office/Retail/Medical
- RE Tax - \$8,617 in 2021 / Insurance +/- \$10,000
- Video Tours: <https://youtube.com/shorts/vA01eYSMrv4>
- <https://youtube.com/shorts/2JursqjobSo?feature=share>
- <https://youtube.com/shorts/-TTuPbVJOh?feature=share>
- <https://youtube.com/shorts/QWTvaDJB4qU?feature=share>

CARL W. LENTZ IV, MBA, CCIM

O: 386.566.3726
carl.lentz@svn.com
FL #BK3068067

2 DAYTONA BEACH OFFICE BUILDINGS-1 PARCEL | 240 North Ridgewood Avenue Daytona Beach, FL 32114

We obtained the information above from sources we believe to be reliable. However, we have not verified its accuracy and make no guarantee, warranty or representation about it. It is submitted subject to the possibility of errors, omissions, change of price, rental or other conditions, prior sale, lease or financing, or withdrawal without notice. We include projections, opinions, assumptions or estimates for example only, and they may not represent current or future performance of the property. You and your tax and legal advisors should conduct your own investigation of the property and transaction. All SVN offices are independently owned and operated.



ADDITIONAL PHOTOS



CARL W. LENTZ IV, MBA, CCIM

O: 386.566.3726
carl.lentz@svn.com
FL #BK3068067

2 DAYTONA BEACH OFFICE BUILDINGS-1 PARCEL | 240 North Ridgewood Avenue Daytona Beach, FL 32114

We obtained the information above from sources we believe to be reliable. However, we have not verified its accuracy and make no guarantee, warranty or representation about it. It is submitted subject to the possibility of errors, omissions, change of price, rental or other conditions, prior sale, lease or financing, or withdrawal without notice. We include projections, opinions, assumptions or estimates for example only, and they may not represent current or future performance of the property. You and your tax and legal advisors should conduct your own investigation of the property and transaction. All SVN offices are independently owned and operated.



ADDITIONAL PHOTOS



CARL W. LENTZ IV, MBA, CCIM

O: 386.566.3726

carl.lentz@svn.com

FL #BK3068067

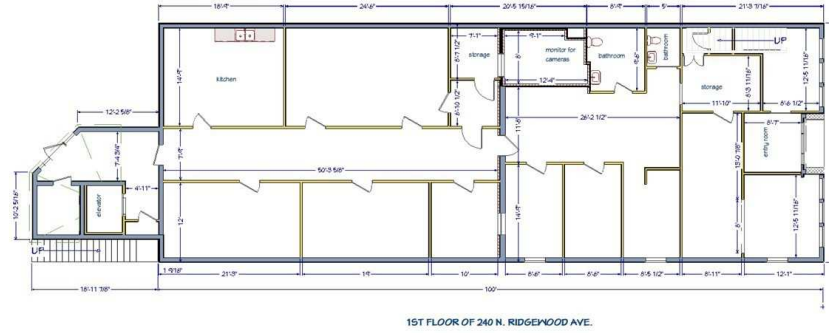
2 DAYTONA BEACH OFFICE BUILDINGS-1 PARCEL | 240 North Ridgewood Avenue Daytona Beach, FL 32114

We obtained the information above from sources we believe to be reliable. However, we have not verified its accuracy and make no guarantee, warranty or representation about it. It is submitted subject to the possibility of errors, omissions, change of price, rental or other conditions, prior sale, lease or financing, or withdrawal without notice. We include projections, opinions, assumptions or estimates for example only, and they may not represent current or future performance of the property. You and your tax and legal advisors should conduct your own investigation of the property and transaction. All SVN offices are independently owned and operated.

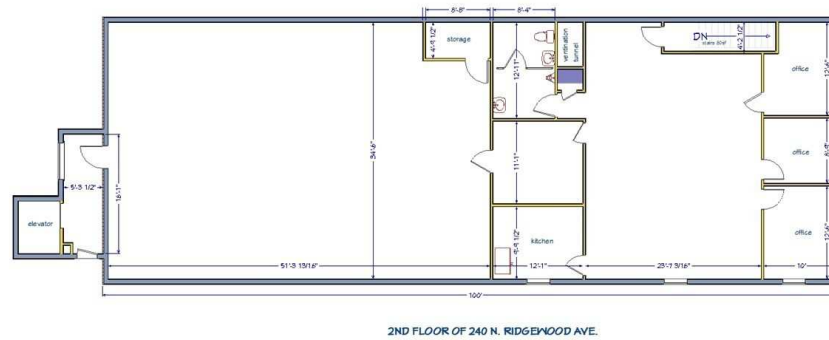


240 RIDGEWOOD FLOOR PLANS

240 N Ridgewood Floor Plan – First Floor



240 N Ridgewood Floor Plan – Second Floor



CARL W. LENTZ IV, MBA, CCIM

O: 386.566.3726

carl.lentz@svn.com

FL #BK3068067

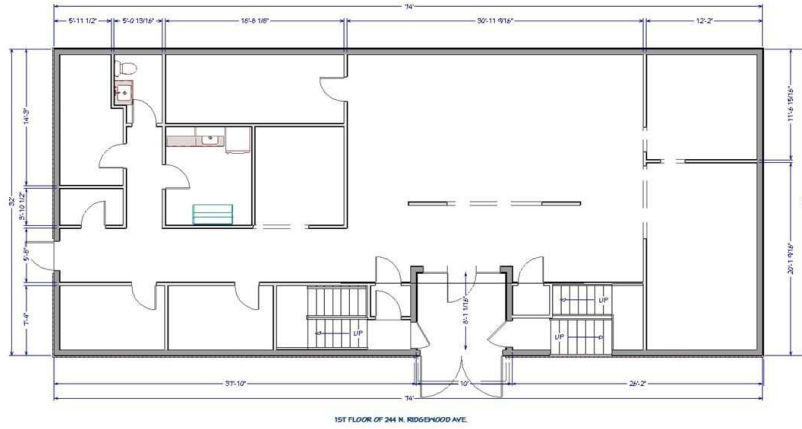
2 DAYTONA BEACH OFFICE BUILDINGS-1 PARCEL | 240 North Ridgewood Avenue Daytona Beach, FL 32114

We obtained the information above from sources we believe to be reliable. However, we have not verified its accuracy and make no guarantee, warranty or representation about it. It is submitted subject to the possibility of errors, omissions, change of price, rental or other conditions, prior sale, lease or financing, or withdrawal without notice. We include projections, opinions, assumptions or estimates for example only, and they may not represent current or future performance of the property. You and your tax and legal advisors should conduct your own investigation of the property and transaction. All SVN offices are independently owned and operated.



244 RIDGEWOOD FLOOR PLANS

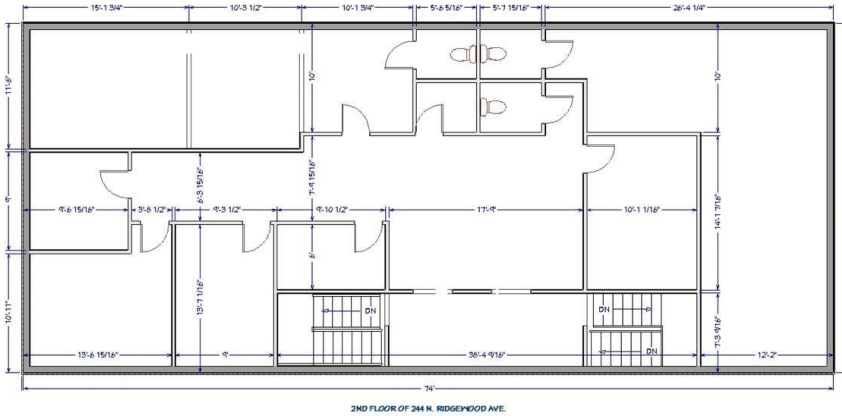
244 N Ridgewood Floor Plan – First Floor



244 N Ridgewood 3D – First Floor



244 N Ridgewood Floor Plan – Second Floor



244 N Ridgewood 3D – Second Floor



CARL W. LENTZ IV, MBA, CCIM

O: 386.566.3726

carl.lentz@svn.com

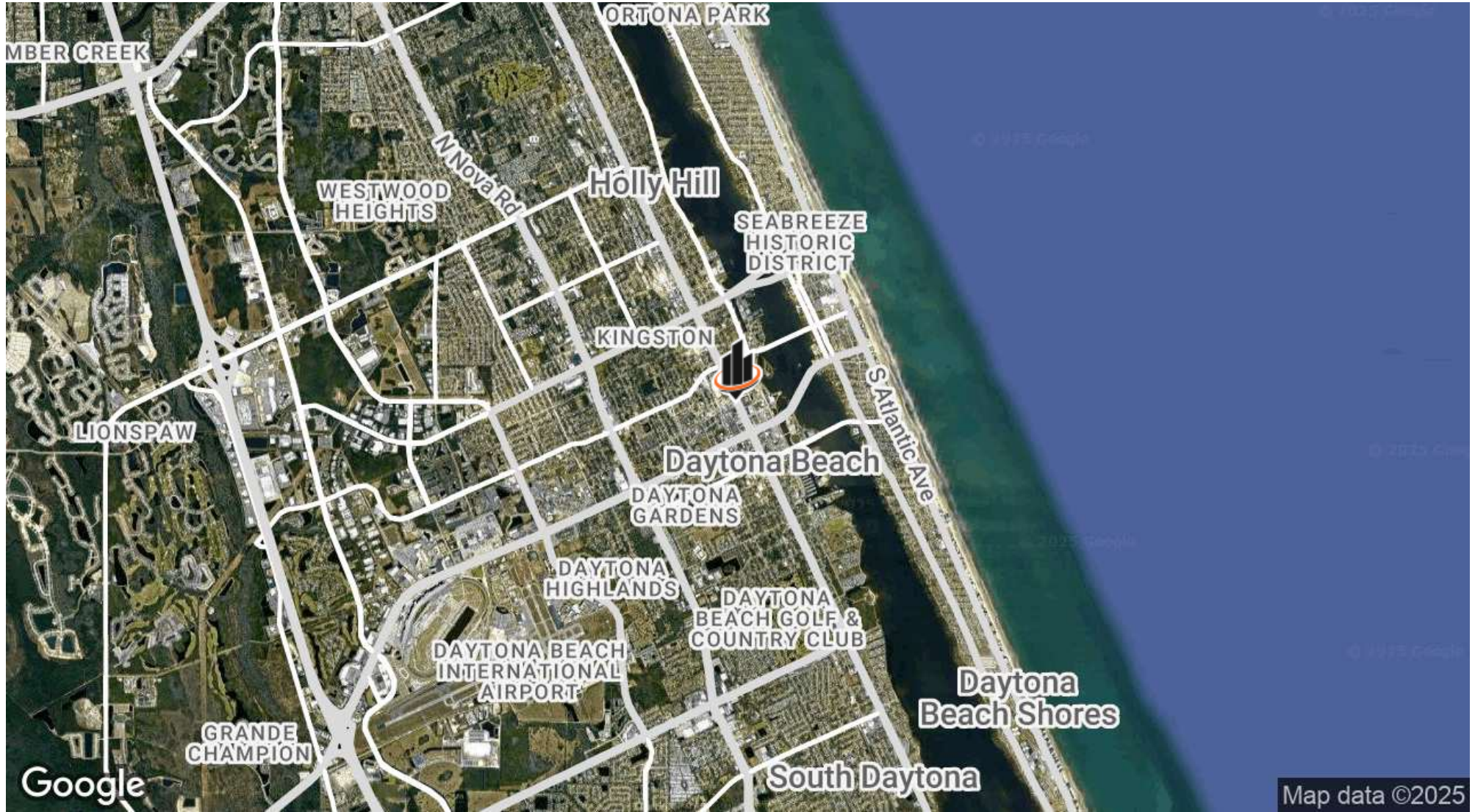
FL #BK3068067

2 DAYTONA BEACH OFFICE BUILDINGS-1 PARCEL | 240 North Ridgewood Avenue Daytona Beach, FL 32114

We obtained the information above from sources we believe to be reliable. However, we have not verified its accuracy and make no guarantee, warranty or representation about it. It is submitted subject to the possibility of errors, omissions, change of price, rental or other conditions, prior sale, lease or financing, or withdrawal without notice. We include projections, opinions, assumptions or estimates for example only, and they may not represent current or future performance of the property. You and your tax and legal advisors should conduct your own investigation of the property and transaction. All SVN offices are independently owned and operated.



LOCATION MAP



CARL W. LENTZ IV, MBA, CCIM

O: 386.566.3726

carl.lentz@svn.com

FL #BK3068067

2 DAYTONA BEACH OFFICE BUILDINGS-1 PARCEL | 240 North Ridgewood Avenue Daytona Beach, FL 32114

We obtained the information above from sources we believe to be reliable. However, we have not verified its accuracy and make no guarantee, warranty or representation about it. It is submitted subject to the possibility of errors, omissions, change of price, rental or other conditions, prior sale, lease or financing, or withdrawal without notice. We include projections, opinions, assumptions or estimates for example only, and they may not represent current or future performance of the property. You and your tax and legal advisors should conduct your own investigation of the property and transaction. All SVN offices are independently owned and operated.



DEMOGRAPHICS MAP & REPORT

POPULATION

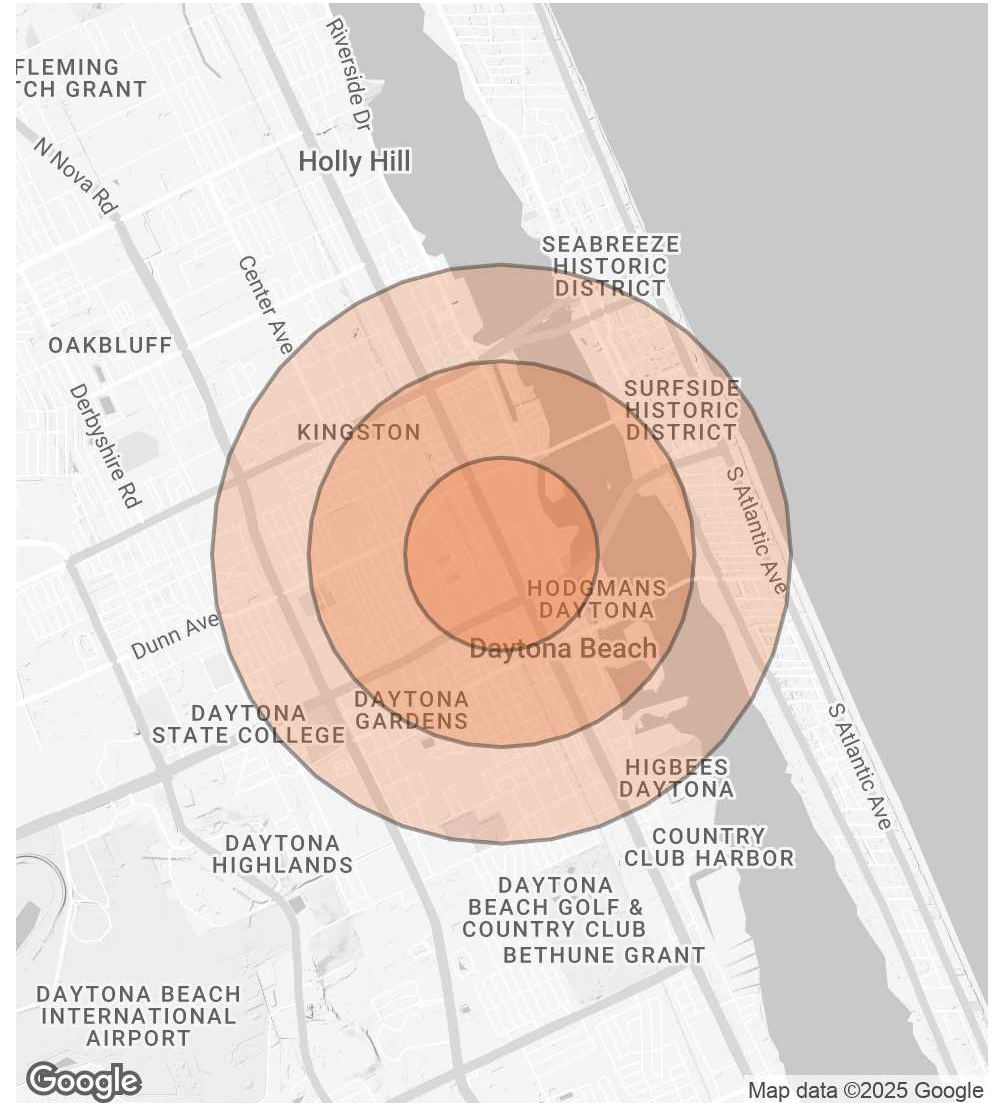
0.5 MILES 1 MILE 1.5 MILES

	0.5 MILES	1 MILE	1.5 MILES
TOTAL POPULATION	2,377	10,899	23,076
AVERAGE AGE	32.3	32.9	35.8
AVERAGE AGE (MALE)	26.7	30.9	34.9
AVERAGE AGE (FEMALE)	35.6	36.5	38.3

HOUSEHOLDS & INCOME 0.5 MILES 1 MILE 1.5 MILES

	0.5 MILES	1 MILE	1.5 MILES
TOTAL HOUSEHOLDS	900	5,017	12,114
# OF PERSONS PER HH	2.6	2.2	1.9
AVERAGE HH INCOME	\$29,249	\$29,038	\$30,835
AVERAGE HOUSE VALUE	\$70,534	\$99,513	\$124,495

* Demographic data derived from 2020 ACS - US Census



CARL W. LENTZ IV, MBA, CCIM

O: 386.566.3726

carl.lentz@svn.com

FL #BK3068067

2 DAYTONA BEACH OFFICE BUILDINGS-1 PARCEL | 240 North Ridgewood Avenue Daytona Beach, FL 32114

We obtained the information above from sources we believe to be reliable. However, we have not verified its accuracy and make no guarantee, warranty or representation about it. It is submitted subject to the possibility of errors, omissions, change of price, rental or other conditions, prior sale, lease or financing, or withdrawal without notice. We include projections, opinions, assumptions or estimates for example only, and they may not represent current or future performance of the property. You and your tax and legal advisors should conduct your own investigation of the property and transaction. All SVN offices are independently owned and operated.

