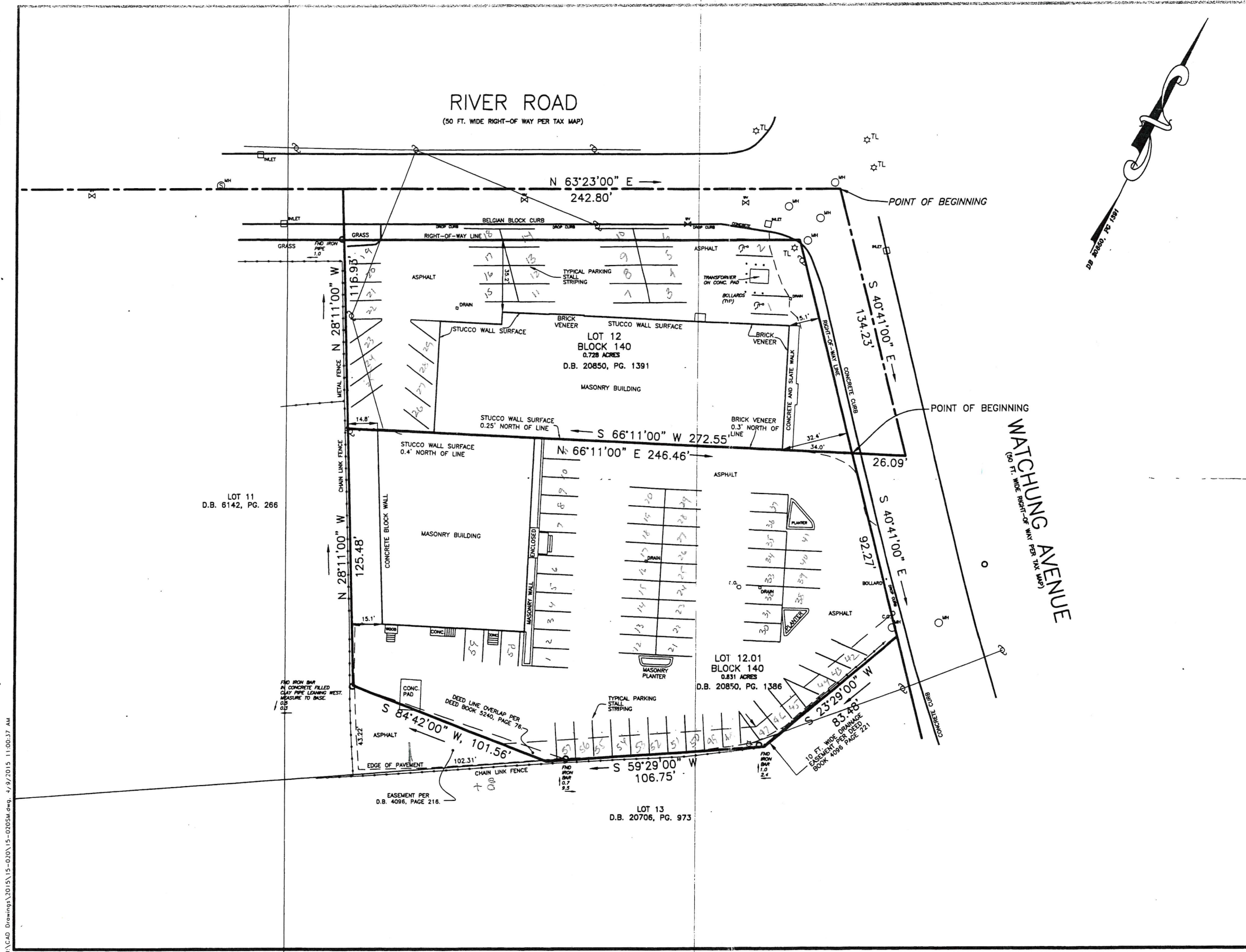


N:\CAD Drawings\2015\15-020\15-020SM.dwg, 4/9/2015 11:00:37 AM



DRAWN BY: SP	CHECKED BY: WGH
JOB No. 15-020	
BOOK	
SCALE 1" = 20'	
DATE APRIL 9, 2015	
REVISIONS	
CERTIFICATE OF AUTHORIZATION No. 24627859700	
NOTES	
17 SIDE 29 13 side 59 88 plus 8 AT REAR 96	
Murphy & Hollows Associates LLC <small>CIVIL ENGINEERING AND SURVEYING</small> <small>182 CENTRAL AVENUE, STIRLING, NJ 07980</small> <small>808.880.1288 murphyhollows@gmail.com</small>	
SURVEY OF LOTS 12 & 12.01 BLOCK 140 RIVER ROAD & WATCHUNG AVENUE BOROUGH OF CHATHAM MORRIS COUNTY NEW JERSEY	
AIDAN T. MURPHY <small>N.J. L.C. PROFESSIONAL ENGINEER #21319</small> <small>N.J. PROFESSIONAL PLANNER #2531</small>	
 WILLIAM G. HOLLOWS <small>N.J. L.C. PROFESSIONAL ENGINEER</small> <small>& LAND SURVEYOR #27473</small> <small>N.J. PROFESSIONAL PLANNER #2530</small>	
FILE LF15-020	SHEET 1 OF 1

