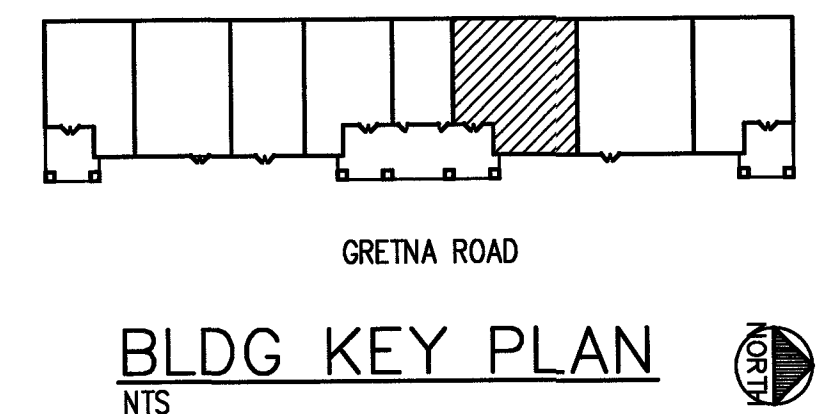
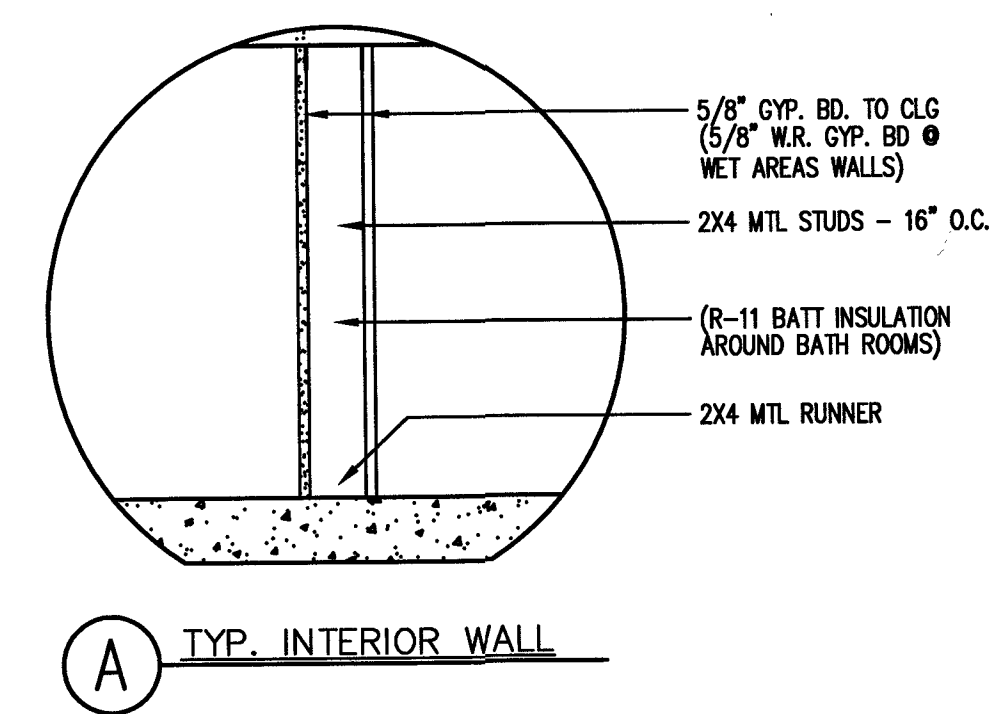


**FLOOR PLAN**  
1/4"=1'-0"



**BLDG KEY PLAN**  
NTS

**CODE**  
INTERNATIONAL BUILDING CODE 2018  
INTERNATIONAL PLUMBING CODE 2018  
INTERNATIONAL MECHANICAL CODE 2018  
INTERNATIONAL FIRE CODE 2018  
NATIONAL ELECTRIC CODE 2017  
ANSI A117.1 2009

**PROJECT DESCRIPTION**  
REMODEL TO BUSINESS OFFICES,

**BLDG OCCUPANCY**  
B, BUSINESS,

**CONSTRUCTION TYPE**  
TYPE 2B

**ALLOWABLE AREA - B**  
TABLE 506.2 NS 23,000 SF/FLOOR  
FRONTAGE INCREASE + 75%  
40,250 SF/FLOOR  
ACTUAL LOWER LEVEL 16,072 SF

**ALLOWABLE HEIGHT**  
TABLE 504.4 NS 3 STORIES  
ACTUAL 2 STORIES

**OCCUPANCY TABULATION**  
OFFICE 2,942 SF / 150 = 19.6 PEOPLE  
TOTAL OCCUPANT LOAD 20 PEOPLE

| REVISIONS | BY |
|-----------|----|
|           |    |
|           |    |
|           |    |
|           |    |
|           |    |
|           |    |
|           |    |
|           |    |
|           |    |
|           |    |

ALL RIGHTS RESERVED  
This drawing is solely the property of HERITAGE ARCHITECTURE and any unauthorized use, duplication, or alterations without the consent of HERITAGE ARCHITECTURE is strictly prohibited and is punishable by law.

**HERITAGE ARCHITECTURE**  
ARCHITECTURE-MANAGEMENT  
8780 Bay View Drive, Foley, AL 36686 417-384-0716

**THE EXECUTIVE CENTER**  
5571 GRETNA ROAD  
BRANSON, MISSOURI

STATUS:  DESIGN INTENT ONLY  APPROVED FOR CONSTRUCTION  OTHER

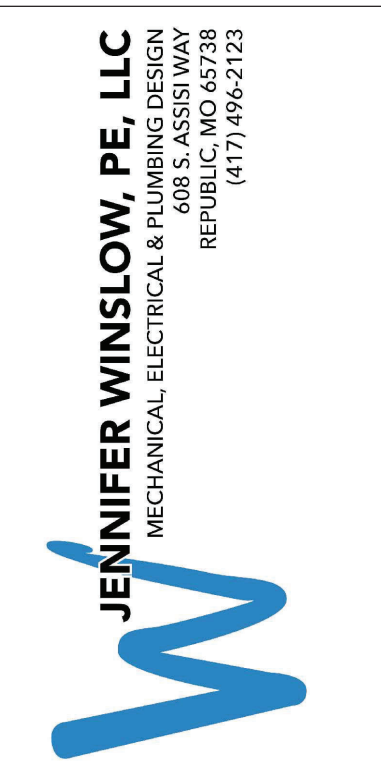
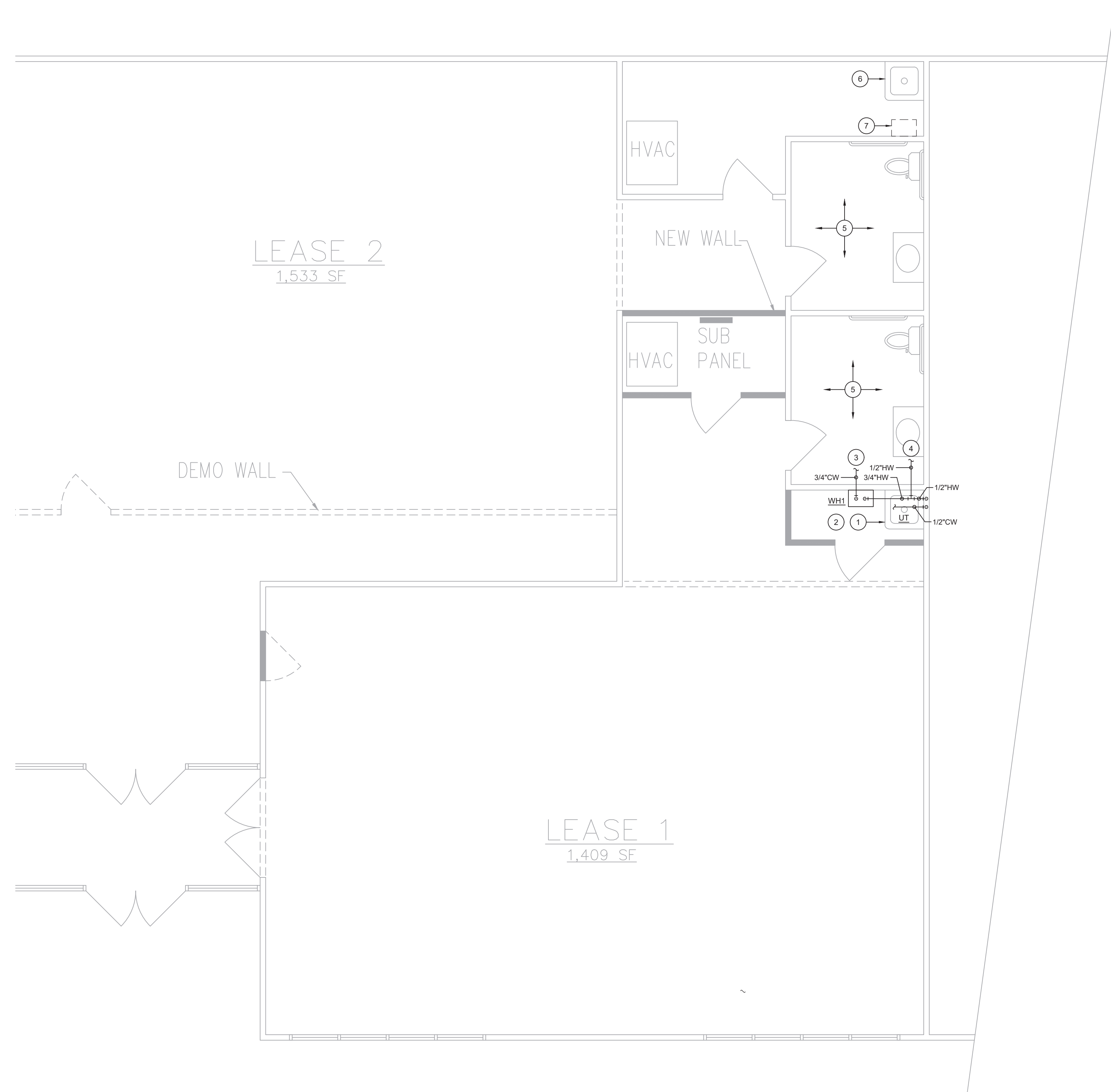
|                     |
|---------------------|
| DRAWN               |
| CHECKED             |
| DATE<br>3-12-25     |
| SCALE<br>AS NOTED   |
| JOB NO.             |
| SHEET<br><b>A-1</b> |

| PLUMBING FIXTURE SCHEDULE |             |              |       |      |      |        |       |   |       |                                |
|---------------------------|-------------|--------------|-------|------|------|--------|-------|---|-------|--------------------------------|
| MARK                      | ITEM        | MANUFACTURER | MODEL | CW   | HW   | VENT   | WASTE | ACCESSORIES   | NOTES | EQUIVALENT MANUFACTURERS       |
| UT                        | UTILITY TUB | FIAT         | FL1   | 1/2" | 1/2" | 1-1/2" | 2"    | FIAT A1 4" CENTERSET FAUCET, FL1 HARDWARE PACKAGE WITH METAL LEGS | -     | STERN WILLIAMS, ZURN, OR EQUAL |

| WATER HEATER SCHEDULE |          |       |       |                 |                  |        |               |                     |  |
|-----------------------|----------|-------|-------|-----------------|------------------|--------|---------------|---------------------|--|
| MARK                  | TYPE     | MANUF | MODEL | GALLON CAPACITY | RECOVERY GPH@90F | INPUT  | VOLTAGE/PHASE | NOTES & ACCESSORIES |  |
| WH1                   | ELECTRIC | BOSCH | GL4Ti | 3.65            | 6.8              | 1500 W | 120 / 1       | 1,2                 |  |

NOTES/ACCESSORIES:  
 1. THERMAL EXPANSION TANK EQUIVALENT TO AMTROL MODEL ST-5.  
 2. PRESSURE & TEMPERATURE RELIEF VALVE.

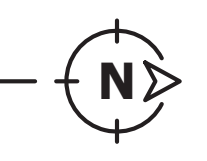
- GENERAL NOTES:**
- ALL PLUMBING WORK MUST BE EXECUTED BY LICENSED PLUMBING CONTRACTORS IN ACCORDANCE WITH REQUIREMENTS OF THE 2018 EXISTING BUILDING CODE, 2018 INTERNATIONAL PLUMBING CODE AND ALL APPLICABLE LOCAL CODES AS ADOPTED BY THE AUTHORITY HAVING JURISDICTION.
  - THESE PLANS ARE DIAGRAMMATIC AND NOT TO BE SCALED. FIELD VERIFY EXACT LOCATIONS AND ROUTING OF PIPING AND COORDINATE WITH OTHER TRADES.
  - MAINTAIN ALL CLEARANCES REQUIRED BY ELECTRICAL AND MECHANICAL EQUIPMENT. DO NOT ROUTE PIPING ABOVE ELECTRICAL PANELS.
  - ALL PIPING SHALL BE CONCEALED WHERE POSSIBLE. WATER AND VENT PIPING SHALL BE ROUTED AS NEAR AS POSSIBLE TO THE CEILING AND IN THE WALLS. DRAIN AND WASTE PIPING SHALL BE BELOW FLOOR AND IN WALLS EXCEPT WHERE NOTED.
  - ALL VENT PIPING IS 1-1/2" UNLESS NOTED OTHERWISE.
  - DOMESTIC WATER PIPING IS 1/2" UNLESS NOTED OTHERWISE. SEE PLUMBING FIXTURE SCHEDULE FOR FIXTURE BRANCH SIZES.
  - PIPE INSULATION ON ALL DOMESTIC WATER LINES:
    - FIBERGLASS INSULATION, 3.5 LB. DENSITY WITH ASJ JACKET
    - ARMSTRONG ARMAFLEX AP (25/50) INSTALLED WITH ARMAFLEX 520 ADHESIVE. SEAL ALL JOINTS, DO NOT USE TAPE.
    - 1/2" THICK INSULATION ON BRANCHES NOT EXCEEDING 12'-0" IN LENGTH.
    - 1" THICK ON ALL OTHER LINES.
    - MATCH EXISTING CONDITIONS.
  - PIPING MATERIAL:
    - HOT AND COLD WATER PIPING - TYPE "L" COPPER OR PEX (MATCH EXISTING)
    - DRAIN, WASTE AND VENT PIPING - SCHEDULE 40 PVC DWV, ASTM D-2665
    - BRONZE BALL VALVES
  - FURNISH ALL PLUMBING FIXTURES COMPLETE WITH NECESSARY STOPS, TRAPS, TAILPIECES, TRIM, ETC.
  - DO NOT ROUTE ANY PIPING IN UNCONDITIONED SPACES.
- SYMBOLS LEGEND:**
- DOMESTIC COLD WATER  
 - - - DOMESTIC HOT WATER  
 ◯- - - PIPE DROP, TEE DOWN, TEE UP, PIPE RISER
- KEY NOTES:**
- CONNECT NEW SERVICE SINK WASTE AND VENT INTO EXISTING PIPING IN THIS AREA. FIELD VERIFY EXACT LOCATION.
  - NEW MINI-TANK WATER HEATER HIGH ON WALL. ROUTE DRAIN LINES TO SERVICE SINK.
  - PROVIDE NEW 3/4" COLD WATER FROM EXISTING 3/4" OR LARGER COLD WATER LINE IN THIS AREA. FIELD VERIFY LOCATION OF EXISTING PIPING.
  - RE-ROUTE HOT WATER FROM EXISTING LAVATORY TO NEW WATER HEATER.
  - EXISTING RESTROOM PLUMBING AND FIXTURES TO REMAIN.
  - EXISTING MOP SINK TO REMAIN.
  - EXISTING WATER HEATER TO REMAIN.



REVISIONS:

**THE EXECUTIVE CENTER**  
 5571 GREINA RD  
 BRANSON, MO

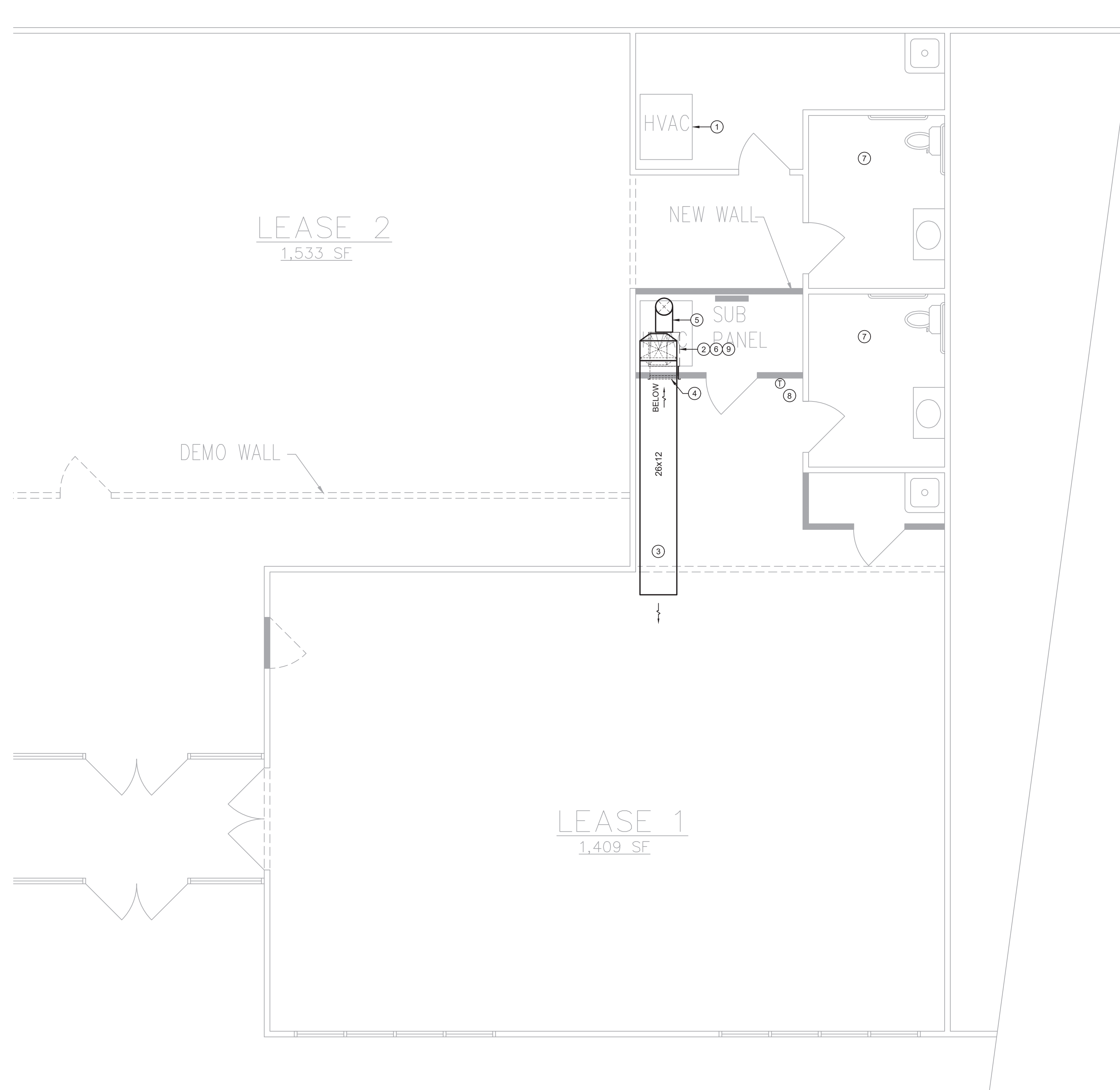
**1 PLUMBING PLAN**  
 P1.0 SCALE: 1/4" = 1'-0"



SHEET NAME  
**PLUMBING PLAN**

SHEET NUMBER  
**P1.0**

DATE: March 12, 2025



**GENERAL NOTES:**

- A. ALL MECHANICAL WORK MUST BE EXECUTED BY LICENSED MECHANICAL CONTRACTORS IN ACCORDANCE WITH REQUIREMENTS OF THE 2018 EXISTING BUILDING CODE, 2018 INTERNATIONAL MECHANICAL CODE AND ALL APPLICABLE LOCAL CODES AS ADOPTED BY THE AUTHORITY HAVING JURISDICTION.
- B. THESE PLANS ARE DIAGRAMMATIC AND NOT TO BE SCALED. COORDINATE WITH ALL OTHER TRADES.
- C. MAINTAIN ALL CLEARANCES REQUIRED BY ELECTRICAL AND MECHANICAL EQUIPMENT. DO NOT ROUTE PIPING OR DUCTWORK ABOVE ELECTRICAL PANELS.
- D. PROVIDE ALL ACCESSORIES, COMPONENTS, ETC. REQUIRED FOR COMPLETE INSTALLATION OF SPECIFIED EQUIPMENT.
- E. COORDINATE DUCTWORK AND PIPING LAYOUTS AND LOCATIONS WITH STRUCTURAL CONDITIONS, ELECTRICAL EQUIPMENT, ETC.
- F. MAINTAIN MANUFACTURER'S RECOMMENDED CLEARANCES FOR ALL EQUIPMENT.
- G. EXTERNALLY INSULATE SUPPLY AND RETURN DUCTWORK.
- H. DUCT DIMENSIONS ON PLANS ARE CLEAR INSIDE AREA.
- I. DUCT MATERIALS:
  - 1. ROUND SUPPLY AND RETURN AIR DUCTWORK - GALVANIZED SNAPLOCK PIPE WITH TRANSVERSE JOINTS TAPED AND WRAPPED WITH 1-1/2", 1 LB. FIBERGLASS DUCT WRAP WITH A CONTINUOUS VAPOR BARRIER.
  - 2. RECTANGULAR SUPPLY AND RETURN AIR DUCTWORK - GALVANIZED STEEL WITH 1-1/2" 1 LB. FIBERGLASS DUCT WRAP WITH A CONTINUOUS VAPOR BARRIER. INSTALL TURNING VANES IN ALL ELBOWS.
  - 3. CONSTRUCTED IN ACCORDANCE WITH SMACNA.
- L. DUCT WRAP INSULATION - DUCT WRAP INSULATION SHALL BE 1-1/2" THICK, 1 LB./CU. FOOT DENSITY, FIBERGLASS TYPE, WITH FOIL SCRIM KRAFT FACING, R-VALUE = 5.7 AT 75°F MEAN TEMPERATURE.
- M. MOUNT ALL DUCTWORK AS HIGH AS POSSIBLE.
- N. PROVIDE VERTICAL OFFSETS IN DUCTWORK AS REQUIRED TO ACCOMMODATE STRUCTURAL CONDITIONS AND OTHER CONFLICTS. USE 45° TURNS WHERE POSSIBLE.

**KEY NOTES:**

- 1. EXISTING AIR HANDLER TO REMAIN. (ONE OF TWO)
- 2. RELOCATE OTHER EXISTING AIR HANDLER TO THIS LOCATION.
- 3. NEW SUPPLY AIR DUCT OPEN ENDED TO FUTURE TENANT SPACE. COORDINATE LOCATION WITH STRUCTURE AND EXISTING CONDITIONS. FINAL AIR DISTRIBUTION BY FUTURE TENANT.
- 4. CLEAN AND RELOCATE EXISTING RETURN AIR GRILLE LOW ON NEW WALL. CONNECT TO AIR HANDLER RETURN AIR PLENUM BELOW UNIT.
- 5. EXTEND EXISTING 8" FRESH AIR DUCT TO NEW AIR HANDLER LOCATION. CONNECT TO RETURN AIR PLENUM BELOW UNIT.
- 6. PROVIDE CONDENSATE PUMP TO PUMP AIR HANDLER CONDENSATE TO NEW SERVICE SINK.
- 7. EXISTING RESTROOM EXHAUST TO REMAIN.
- 8. RELOCATE EXISTING THERMOSTAT AS REQUIRED.
- 9. ROUTE REFRIGERANT LINES FROM RELOCATED AIR HANDLER TO EXISTING OUTDOOR HEAT PUMP. VERIFY LOCATION.

**1 HVAC PLAN**  
M1.0 SCALE: 1/4" = 1'-0"



JENNIFER L. WINSLOW, ENGINEER  
MO# E-2009001145  
MO COM# E-2020011618  
THIS SEAL IS FOR ENGINEERING INFORMATION ONLY

**REVISIONS:**

**THE EXECUTIVE CENTER**  
5571 GREYNA RD  
BRANSON, MO

SHEET NAME

HVAC PLAN

SHEET NUMBER

**M1.0**

DATE: March 12, 2025

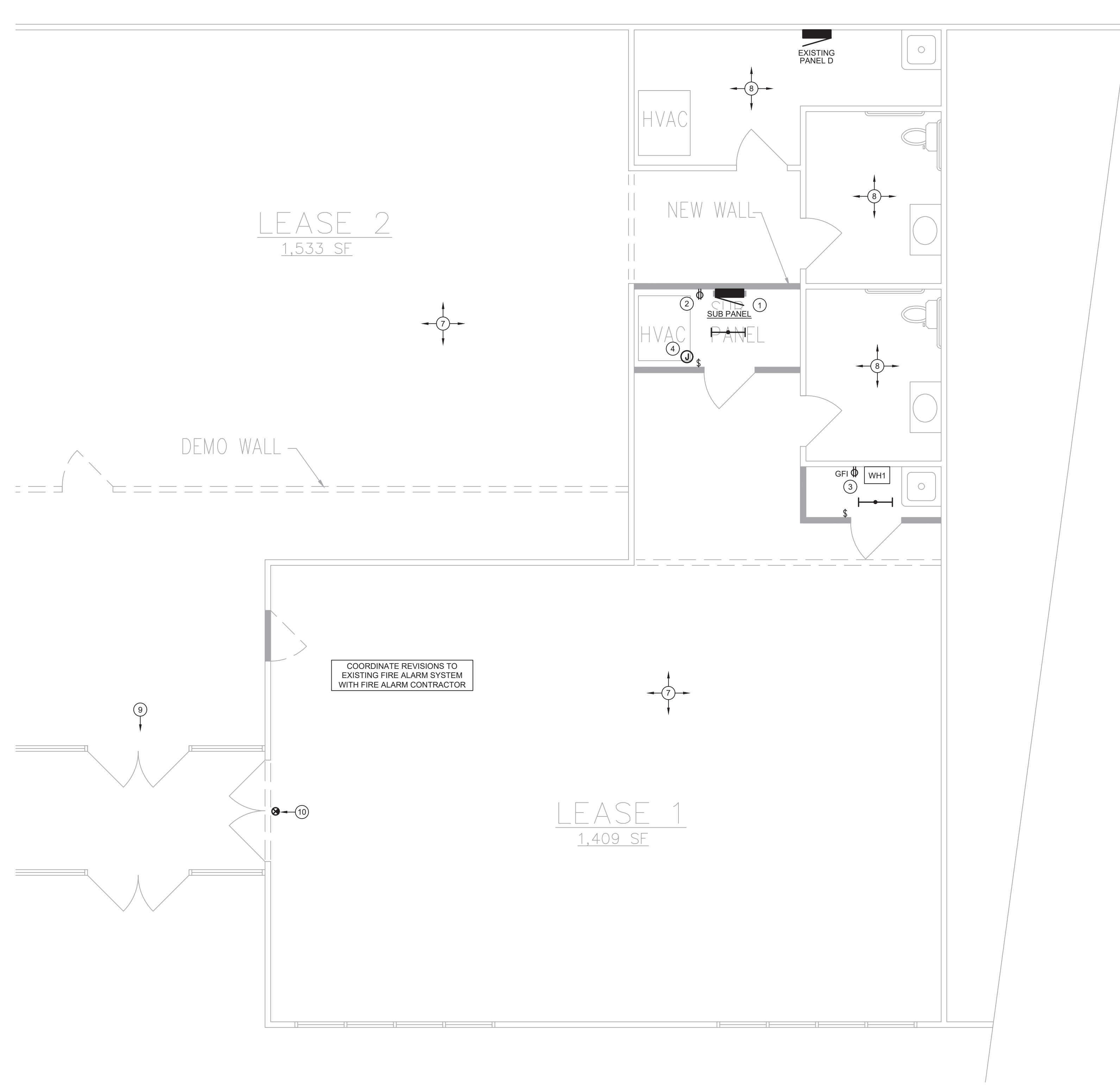
| SUB PANEL        |            |                  |                           |                   |       |                     |           |                  |                       |          |   |
|------------------|------------|------------------|---------------------------|-------------------|-------|---------------------|-----------|------------------|-----------------------|----------|---|
| VOLTAGE: 120/208 |            | POLES: 30        |                           | MOUNTING: SURFACE |       | ENCLOSURE: NEMA 1   |           |                  |                       |          |   |
| PHASE/WIRE: 3/4  |            | KAIC AMPS: -     |                           | LOCATION: MECH    |       | MANUFACTURER: SQR D |           | MODEL: QO        |                       |          |   |
| CKT. NO.         | BRKR. SIZE | EQUIPMENT SERVED | LOAD (VA)                 | WIRE (Ø & N)      | PHASE | WIRE (Ø & N)        | LOAD (VA) | EQUIPMENT SERVED | BRKR. SIZE            | CKT. NO. |   |
| 1                | 20/1       | LIGHTS           |                           |                   |       |                     |           |                  |                       | 2        |   |
| 3                | 20/1       | RECEPTACLES      |                           |                   |       |                     |           |                  |                       | 4        |   |
| 5                | 20/1       | WATER HEATER     | 1500                      | 12 12             |       | 5465                | 8 -       | 5465             | AIR HANDLER           | 50/3     | 4 |
| 7                | 20/1       | CONDENSATE PUMP  | 100                       | 12 12             |       | 4240                | 6 -       | 4140             | HEAT PUMP             | 60/2     | 8 |
| 9                | 20/1       | SPARE            |                           |                   |       |                     |           |                  |                       | 10       |   |
| 11               | 20/1       | SPARE            |                           |                   |       |                     |           |                  |                       | 12       |   |
| 13               | 20/1       | SPARE            |                           |                   |       |                     |           |                  |                       | 14       |   |
| 15               | 20/1       | SPARE            |                           |                   |       |                     |           |                  |                       | 16       |   |
| 17               | 20/1       | SPARE            |                           |                   |       |                     |           |                  |                       | 18       |   |
| 19               | 20/1       | SPARE            |                           |                   |       |                     |           |                  |                       | 20       |   |
| 21               |            | SPACE            |                           |                   |       |                     |           |                  |                       | 22       |   |
| 23               |            | SPACE            |                           |                   |       |                     |           |                  |                       | 24       |   |
| 25               |            | SPACE            |                           |                   |       |                     |           |                  |                       | 26       |   |
| 27               |            | SPACE            |                           |                   |       |                     |           |                  |                       | 28       |   |
| 29               |            | SPACE            |                           |                   |       |                     |           |                  |                       | 30       |   |
|                  |            |                  | TOTALS: 9705 9605 6965 VA |                   |       |                     |           |                  |                       |          |   |
|                  |            |                  | CONNECTED LOAD: 28275 VA  |                   |       | 73 AMPS             |           |                  | DEMAND LOAD: 26275 VA |          |   |

| PANEL D          |            |                  |                              |                   |       |                     |           |                  |                       |          |  |
|------------------|------------|------------------|------------------------------|-------------------|-------|---------------------|-----------|------------------|-----------------------|----------|--|
| VOLTAGE: 120/208 |            | POLES: 42        |                              | MOUNTING: SURFACE |       | ENCLOSURE: NEMA 1   |           |                  |                       |          |  |
| PHASE/WIRE: 3/4  |            | KAIC AMPS: -     |                              | LOCATION: MECH    |       | MANUFACTURER: SQR D |           | MODEL: NQOD      |                       |          |  |
| CKT. NO.         | BRKR. SIZE | EQUIPMENT SERVED | LOAD (VA)                    | WIRE (Ø & N)      | PHASE | WIRE (Ø & N)        | LOAD (VA) | EQUIPMENT SERVED | BRKR. SIZE            | CKT. NO. |  |
| 1                | 20/1       | LIGHTS           |                              |                   |       |                     |           |                  |                       | 2        |  |
| 3                | 20/1       | RECEPTACLES      | 1200                         |                   |       |                     |           |                  |                       | 4        |  |
| 5                | 20/1       | WATER HEATER     | 1500                         |                   |       |                     |           |                  |                       | 8        |  |
| 7                | 20/1       | SPARE            |                              |                   |       |                     |           |                  |                       | 9        |  |
| 9                | 20/1       | SPARE            |                              |                   |       |                     |           |                  |                       | 10       |  |
| 11               | 20/1       | SPARE            |                              |                   |       |                     |           |                  |                       | 12       |  |
| 13               | 20/1       | SPARE            |                              |                   |       |                     |           |                  |                       | 14       |  |
| 15               | 20/1       | SPARE            |                              |                   |       |                     |           |                  |                       | 16       |  |
| 17               | 20/1       | SPARE            |                              |                   |       |                     |           |                  |                       | 18       |  |
| 19               | 20/1       | SPARE            |                              |                   |       |                     |           |                  |                       | 20       |  |
| 21               |            | SPACE            |                              |                   |       |                     |           |                  |                       | 22       |  |
| 23               |            | SPACE            |                              |                   |       |                     |           |                  |                       | 24       |  |
| 25               |            | SPACE            |                              |                   |       |                     |           |                  |                       | 26       |  |
| 27               |            | SPACE            |                              |                   |       |                     |           |                  |                       | 28       |  |
| 29               |            | SPACE            |                              |                   |       |                     |           |                  |                       | 30       |  |
| 31               |            | SPACE            |                              |                   |       |                     |           |                  |                       | 32       |  |
| 33               |            | SPACE            |                              |                   |       |                     |           |                  |                       | 34       |  |
| 35               |            | SPACE            |                              |                   |       |                     |           |                  |                       | 36       |  |
| 37               |            | SPACE            |                              |                   |       |                     |           |                  |                       | 38       |  |
| 39               |            | SPACE            |                              |                   |       |                     |           |                  |                       | 40       |  |
| 41               | 20/1       | SPARE            | 200                          |                   |       |                     |           |                  |                       | 42       |  |
|                  |            |                  | TOTALS: 17770 20510 16770 VA |                   |       |                     |           |                  |                       |          |  |
|                  |            |                  | CONNECTED LOAD: 55050 VA     |                   |       | 153 AMPS            |           |                  | DEMAND LOAD: 55050 VA |          |  |

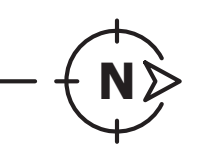
- GENERAL NOTES:**
- ALL ELECTRICAL WORK MUST BE EXECUTED BY LICENSED ELECTRICAL CONTRACTORS IN ACCORDANCE WITH REQUIREMENTS OF THE 2018 INTERNATIONAL BUILDING CODE, 2017 NATIONAL ELECTRICAL CODE, AND ALL APPLICABLE LOCAL CODES AS ADOPTED BY THE AUTHORITY HAVING JURISDICTION.
  - THESE PLANS ARE DIAGRAMMATIC AND NOT TO BE SCALED. FIELD VERIFY EXACT LOCATIONS AND ROUTING OF CONDUIT AND COORDINATE WITH OTHER TRADES.
  - MAINTAIN ALL CLEARANCES REQUIRED BY ELECTRICAL AND MECHANICAL EQUIPMENT. DO NOT ROUTE PIPING ABOVE ELECTRICAL PANELS.
  - ALL WIRING SHALL BE IN CONDUIT. ALL UNDERGROUND CONDUIT SHALL BE PVC SCHEDULE 40 WITH RGS ELLS. EXPOSED OUTDOOR LOCATIONS SHALL BE RGS. ALL INTERIOR CONDUIT SHALL BE EMT ABOVE GRADE. MC OR HCFAC CABLE ALLOWED ONLY IN MAXIMUM 20' LENGTHS AND ONLY IN ACCESSIBLE LOCATIONS ABOVE LAY-IN CEILINGS AND IN STUD WALLS. DO NOT USE MC OR HCFAC CABLE FOR HOMERUNS, FEEDER CIRCUITS TO BRANCH PANELS, IN MASONRY WALLS, OR ABOVE HARD CEILINGS.
  - CONDUCTORS TO BE 12 AWG COPPER IN 1/2" CONDUIT UNLESS NOTED OTHERWISE. PROVIDE GROUNDING CONDUCTOR IN ALL RACEWAYS.
  - ALL WIRING IN FINISHED SPACES TO BE CONCEALED.
  - ALL OUTLET BOXES SHALL BE METALLIC, 4" SQUARE WITH SINGLE AND DOUBLE GANG PLASTER RING, PRESSED STEEL KNOCKOUT TYPE. INSTALL BOXES SQUARE AND PLUMB, SECURELY FASTENED AND FLUSH WITH THE FINISHED SURFACE.
  - BRANCH CIRCUITS FEEDING EMERGENCY ILLUMINATION UNITS SHALL BE THE SAME BRANCH CIRCUIT AS THAT SERVING THE NORMAL LIGHTING IN THAT AREA AND CONNECTED AHEAD OF ANY LOCAL SWITCHES. SEE NEC ARTICLE 700.
  - BRANCH CIRCUIT CONDUCTORS SHALL BE COPPER, STRANDED, 600V THHN/TW/N INSULATION. WIRE SIZES #10 AWG AND SMALLER SHALL BE SOLID.
  - PROVIDE TYPED CIRCUIT DIRECTORY FOR ALL PANELS.
  - GROUNDING AND BONDING SHALL BE IN COMPLIANCE WITH ARTICLE 250 OF THE NEC.
  - ALL BRANCH CIRCUITS SHALL HAVE AN EQUIPMENT GROUNDING CONDUCTOR ROUTED WITH THE CIRCUIT CONDUCTORS.
  - MULTIWIRE BRANCH CIRCUITS WITH A SHARED NEUTRAL ARE NOT ALLOWED FOR SINGLE PHASE CIRCUITS.
  - SEAL ALL PENETRATIONS THROUGH FIRE-RATED ASSEMBLIES AS NECESSARY TO RESTORE FIRE-RESISTANCE RATING OF ASSEMBLY. REFER TO ARCHITECTURAL PLANS AND SPECIFICATIONS FOR RATED ASSEMBLIES, FIRE STOPPING MATERIALS, AND REQUIREMENTS.

- SYMBOLS LEGEND:**
- ⊕ DUPLEX RECEPTACLE
  - ⊕ GF I DUPLEX RECEPTACLE W/ GROUND FAULT INTERRUPTER
  - ⊕ LED UTILITY STRIP LIGHT
  - ⊕ JUNCTION BOX
  - ⊕ LIGHTING & POWER PANELBOARD
  - ⊕ DISCONNECT SWITCH
  - ⊕ SINGLE POLE SWITCH
  - ⊕ COMBO EXIT SIGN / EMERGENCY LIGHTING UNIT WITH 90-MINUTE BATTERY BACKUP

- KEY NOTES:**
- NEW 125A ELECTRICAL PANEL SUB-FED FROM EXISTING 225A PANELBOARD.
  - PROVIDE RECEPTACLE FOR CONDENSATE PUMP.
  - PROVIDE RECEPTACLE FOR WATER HEATER. COORDINATE HEIGHT OF DEVICE WITH EQUIPMENT LOCATION.
  - VERIFY POWER REQUIREMENTS OF RELOCATED AIR HANDLER AND ASSOCIATED OUTDOOR HEAT PUMP. RE-FEED FROM NEW SUB PANEL.
  - RELOCATE AIR HANDLER AND HEAT PUMP POWER TO NEW SUB PANEL. FIELD VERIFY WHICH BREAKER FEEDS THE RELOCATED EQUIPMENT.
  - NEW BREAKER IN EXISTING PANEL D TO FEED NEW SUB PANEL.
  - LIGHTS AND RECEPTACLES BY FUTURE TENANT.
  - EXISTING POWER AND LIGHTING TO REMAIN.
  - EXISTING EXIT SIGNS AND EMERGENCY LIGHTING TO REMAIN.
  - NEW COMBO EXIT SIGN / EMERGENCY LIGHT. CIRCUIT WITH LIGHTS IN THIS ROOM.



**1 POWER PLAN**  
E1.0 SCALE: 1/4" = 1'-0"



JENNIFER L. WINSLOW, ENGINEER  
MO CO#E-2009001145  
MO CO#E-2020011618  
THIS SEAL IS FOR ENGINEERING INFORMATION ONLY

REVISIONS:

**THE EXECUTIVE CENTER**  
5571 GREINA RD  
BRANSON, MO

SHEET NAME  
**POWER PLAN**

SHEET NUMBER

**E1.0**

DATE: March 12, 2025