

1,310 - 9,626 SF MEDICAL OFFICE



FOR LEASE

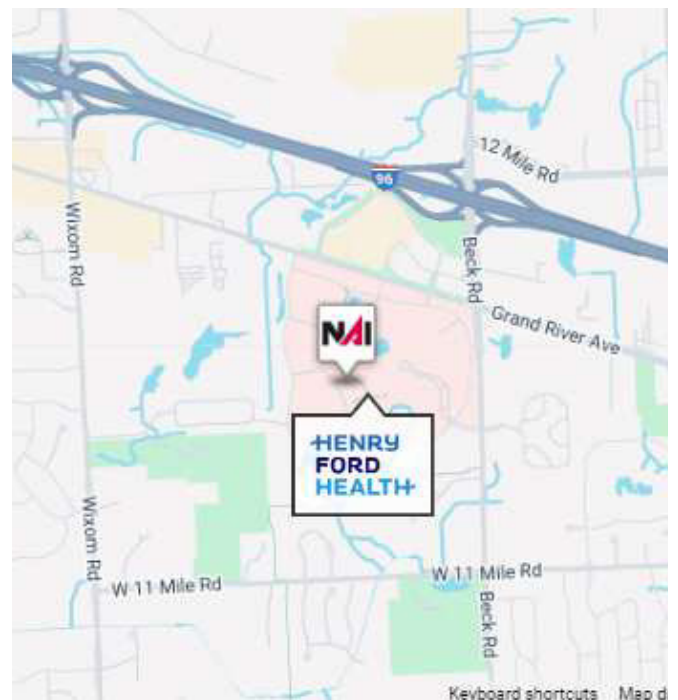


26850 Providence Parkway

Novi, Michigan 48374

Property Highlights

- Class A on Campus Medical Office Space
- 202,215 Total SF Five Story Medical Building
- Built in 2007
- Enclosed Walkway to Henry Ford Providence Novi Hospital
- Handicap Accessible, On-Site Pharmacy Lab & Imaging, Patient Navigator and Deli



NAI Farbman

Commercial Real Estate Services, Worldwide.

www.naifarbman.com

Jeff Cavazos

Senior Vice President | 248.613.6457
jcavazos@farbman.com

Kristi Lawton

Vice President | 248.798.9828
lawton@farbman.com

Owned and Managed By
HEALTHCARE
REALTY

NO WARRANTY, EXPRESS OR IMPLIED, IS MADE AS TO THE ACCURACY OF THE INFORMATION CONTAINED HEREIN. THIS INFORMATION IS SUBMITTED SUBJECT TO ERRORS, OMISSIONS, CHANGE OF PRICE, RENTAL OR OTHER CONDITIONS, WITHDRAWAL WITHOUT NOTICE, AND IS SUBJECT TO ANY SPECIAL LISTING CONDITIONS IMPOSED BY OUR PRINCIPALS, COOPERATING BROKERS, BUYERS, TENANTS AND OTHER PARTIES WHO RECEIVE THIS DOCUMENT SHOULD NOT RELY ON IT, BUT SHOULD USE IT AS A STARTING POINT OF ANALYSIS, AND SHOULD INDEPENDENTLY CONFIRM THE ACCURACY OF THE INFORMATION CONTAINED HEREIN THROUGH A DUE DILIGENCE REVIEW OF THE BOOKS, RECORDS, FILES AND DOCUMENTS THAT CONSTITUTE RELIABLE SOURCES OF THE INFORMATION DESCRIBED HEREIN. LOGOS ARE FOR IDENTIFICATION PURPOSES ONLY AND MAY BE TRADEMARKS OF THEIR RESPECTIVE COMPANIES. NAI Farbman, INC. CA BRE LIC. #01990696.

1,310 - 9,626 SF MEDICAL OFFICE



FOR LEASE

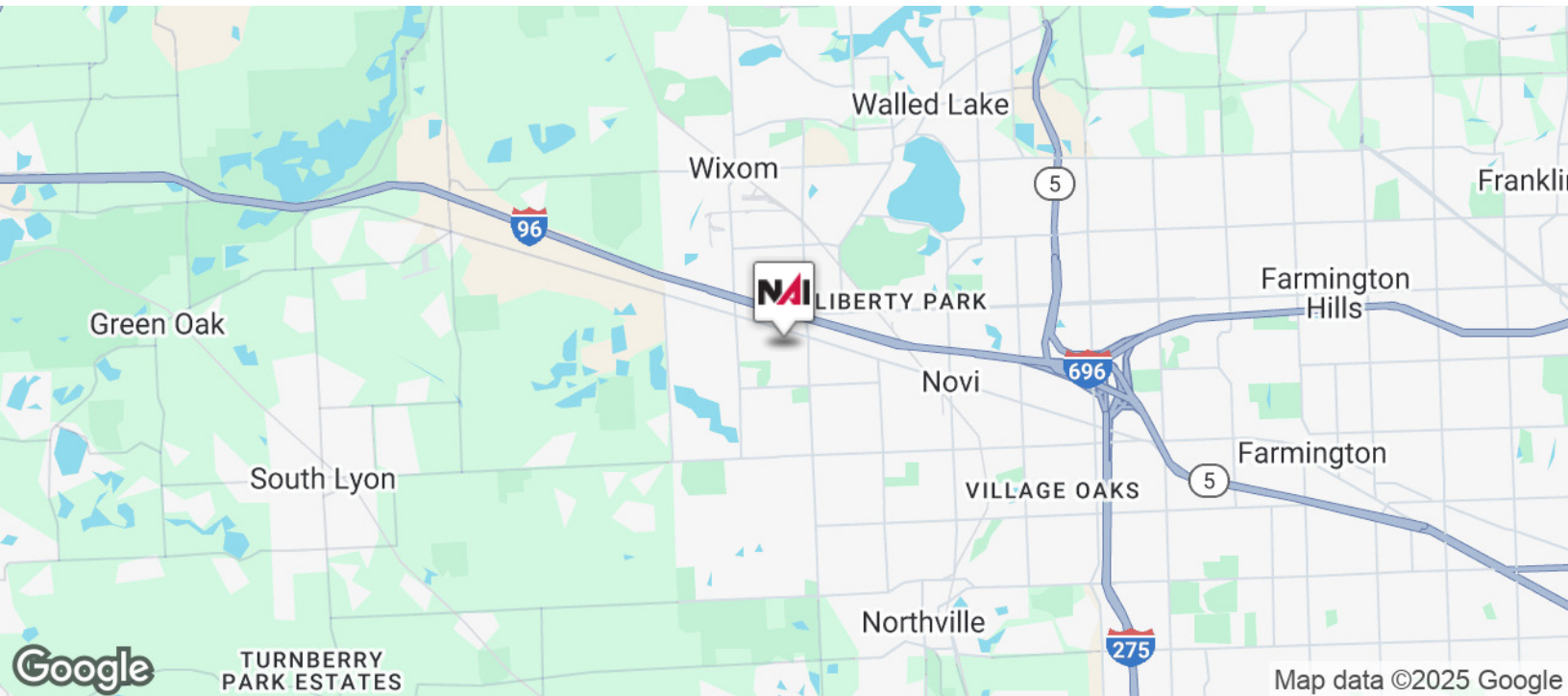
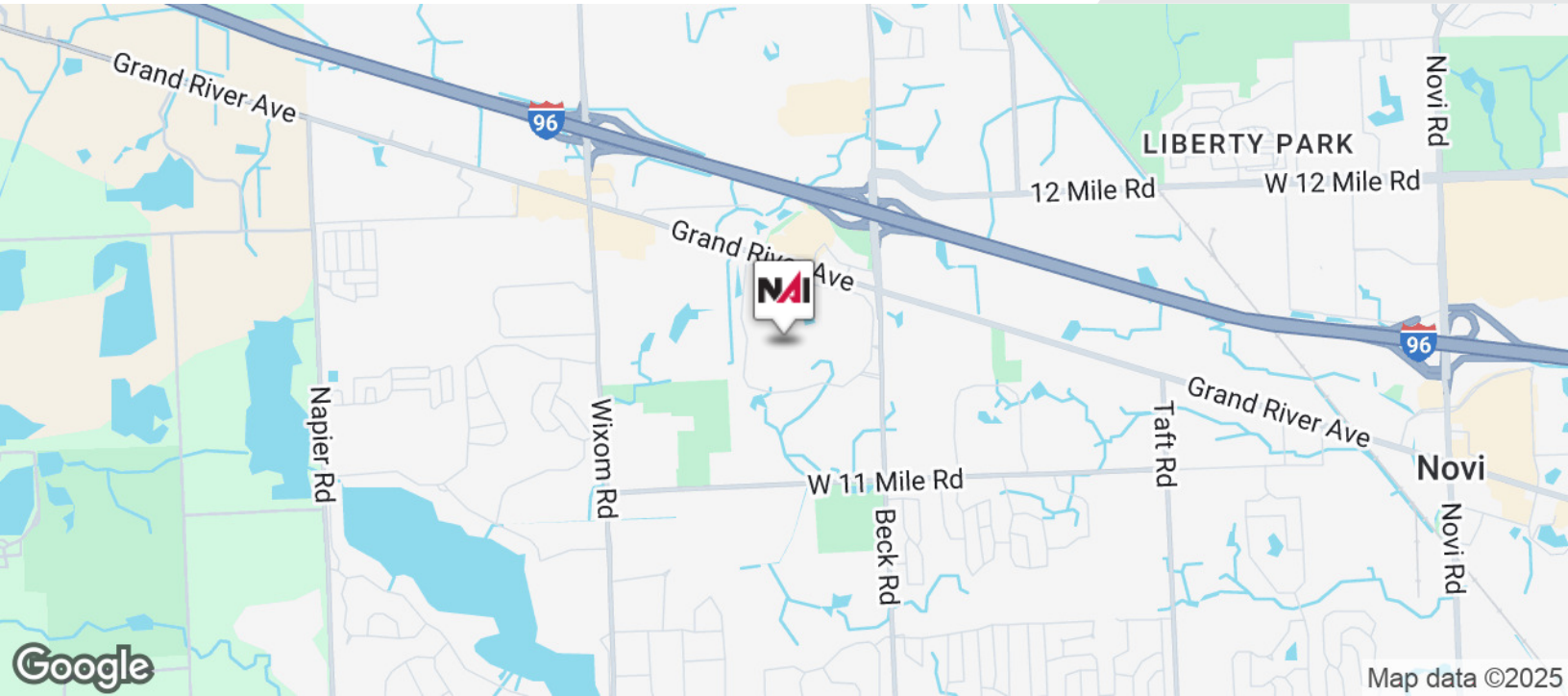
AVAILABLE SPACES

SUITE	SIZE (SF)	DESCRIPTION
155A	1,577 SF	All Office
163	6,750 SF	Former Physical Therapy Space
205	6,176 SF	Built-Out Medical
210	6,082 SF	Built-Out Medical
320A	1,310 SF	Built-Out Medical
365	5,020 SF	Former Physical Therapy Space
402	2,060 SF	Built-Out Medical
415	2,950 SF	Shell Space
425	4,480 SF	Built-Out Medical
430	1,674 SF	Built-Out Medical
465	2,464 SF	Shell Space
500	9,626 SF	Built-Out Medical
510	2,168 SF	Built-Out Medical

1,310 - 9,626 SF MEDICAL OFFICE



FOR LEASE



Commercial Real Estate Services, Worldwide.

www.naifarberman.com

Jeff Cavazos

Senior Vice President | 248.613.6457
jcavazos@farberman.com

Kristi Lawton

Vice President | 248.798.9828
lawton@farberman.com

NO WARRANTY, EXPRESS OR IMPLIED, IS MADE AS TO THE ACCURACY OF THE INFORMATION CONTAINED HEREIN. THIS INFORMATION IS SUBMITTED SUBJECT TO ERRORS, OMISSIONS, CHANGE OF PRICE, RENTAL OR OTHER CONDITIONS, WITHDRAWAL WITHOUT NOTICE, AND IS SUBJECT TO ANY SPECIAL LISTING CONDITIONS IMPOSED BY OUR PRINCIPALS. COOPERATING BROKERS, BUYERS, TENANTS AND OTHER PARTIES WHO RECEIVE THIS DOCUMENT SHOULD NOT RELY ON IT, BUT SHOULD USE IT AS A STARTING POINT OF ANALYSIS, AND SHOULD INDEPENDENTLY CONFIRM THE ACCURACY OF THE INFORMATION CONTAINED HEREIN THROUGH A DUE DILIGENCE REVIEW OF THE BOOKS, RECORDS, FILES AND DOCUMENTS THAT CONSTITUTE RELIABLE SOURCES OF THE INFORMATION DESCRIBED HEREIN. LOGOS ARE FOR IDENTIFICATION PURPOSES ONLY AND MAY BE TRADEMARKS OF THEIR RESPECTIVE COMPANIES. NAI Farberman, INC. CA BRE LIC. #01990696.

1,310 - 9,626 SF
MEDICAL



FOR LEASE



- 1 DaVita Novi Dialysis
- 2 Starbucks
- 3 Chase Bank
- 4 Meijer
- 5 Staybridge Suites-Novi
- 6 Target
- 7 Visions Spa Salon
- 8 Rose Senior Living Providence

Subject Property

Henry Ford Providence Novi Hospital



Commercial Real Estate Services, Worldwide.
www.naifarbman.com

Jeff Cavazos
Senior Vice President | 248.613.6457
jcavazos@farbman.com

Kristi Lawton
Vice President | 248.798.9828
lawton@farbman.com

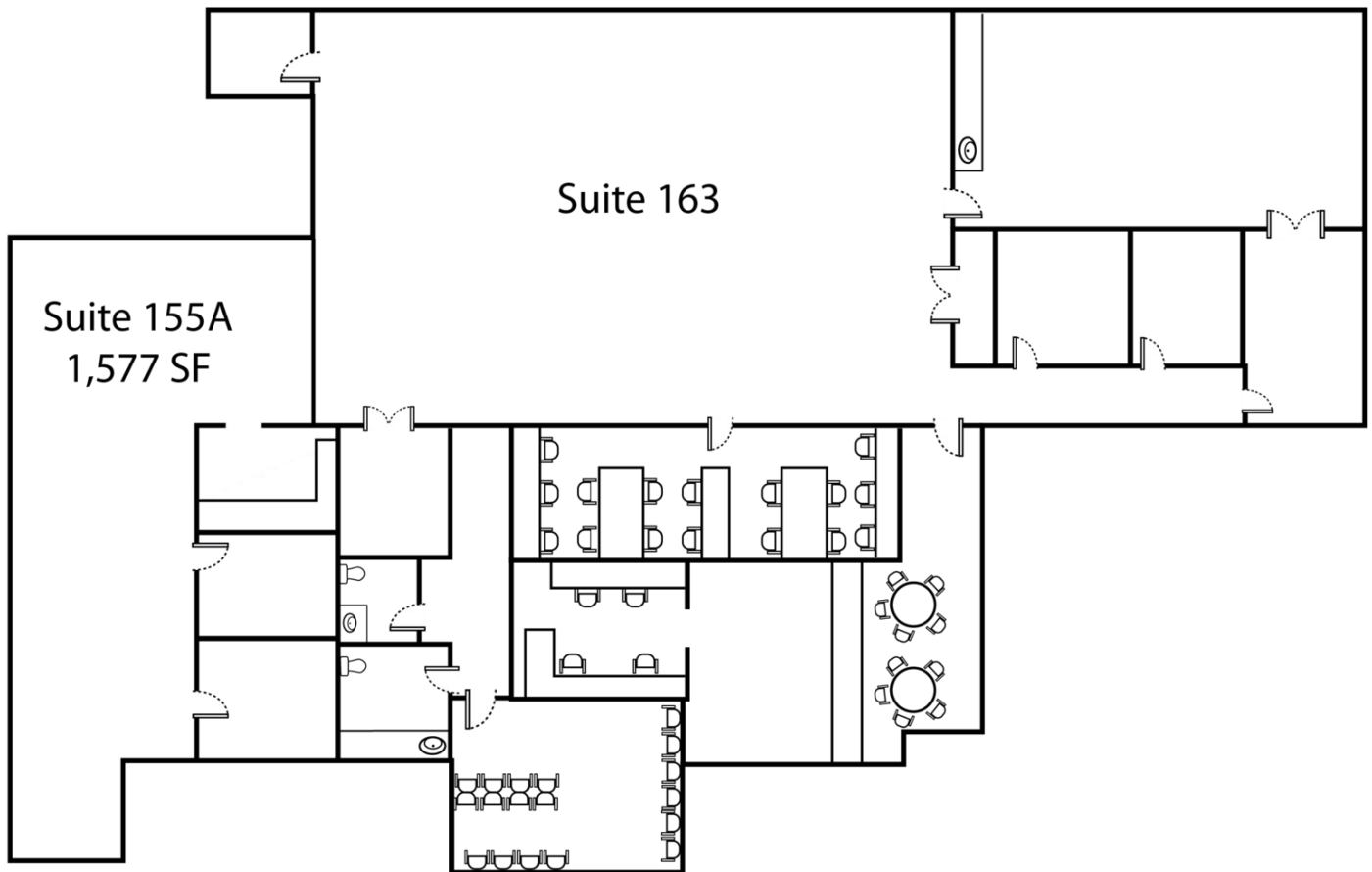
NO WARRANTY, EXPRESS OR IMPLIED, IS MADE AS TO THE ACCURACY OF THE INFORMATION CONTAINED HEREIN. THIS INFORMATION IS SUBMITTED SUBJECT TO ERRORS, OMISSIONS, CHANGE OF PRICE, RENTAL OR OTHER CONDITIONS, WITHDRAWAL WITHOUT NOTICE, AND IS SUBJECT TO ANY SPECIAL LISTING CONDITIONS IMPOSED BY OUR PRINCIPALS, COOPERATING BROKERS, BUYERS, TENANTS AND OTHER PARTIES WHO RECEIVE THIS DOCUMENT SHOULD NOT RELY ON IT, BUT SHOULD USE IT AS A STARTING POINT OF ANALYSIS, AND SHOULD INDEPENDENTLY CONFIRM THE ACCURACY OF THE INFORMATION CONTAINED HEREIN THROUGH A DUE DILIGENCE REVIEW OF THE BOOKS, RECORDS, FILES AND DOCUMENTS THAT CONSTITUTE RELIABLE SOURCES OF THE INFORMATION DESCRIBED HEREIN. LOGOS ARE FOR IDENTIFICATION PURPOSES ONLY AND MAY BE TRADEMARKS OF THEIR RESPECTIVE COMPANIES. NAI Farbman, INC. CA BRE LIC. #01990696.

1,310 - 9,626 SF
MEDICAL OFFICE



FOR LEASE

Suite 163
6,750 SF



Suite 155A and Suite 163 can be combined for a total of 8,327 SF



Commercial Real Estate Services, Worldwide.

www.naifarbman.com

Jeff Cavazos

Senior Vice President | 248.613.6457
jcavazos@farbman.com

Kristi Lawton

Vice President | 248.798.9828
lawton@farbman.com

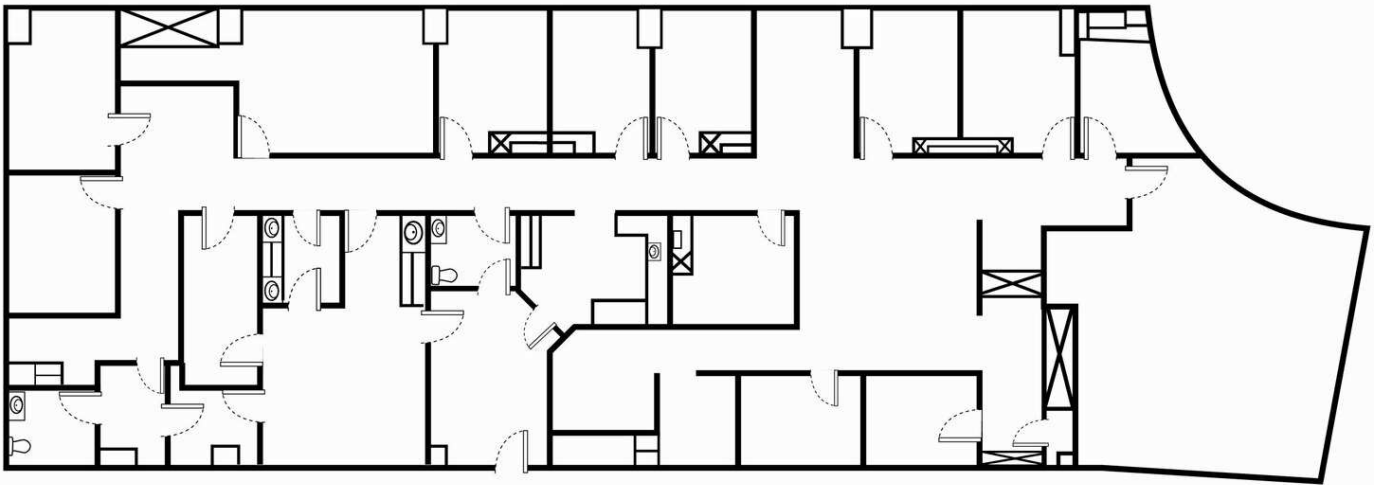
NO WARRANTY, EXPRESS OR IMPLIED, IS MADE AS TO THE ACCURACY OF THE INFORMATION CONTAINED HEREIN. THIS INFORMATION IS SUBMITTED SUBJECT TO ERRORS, OMISSIONS, CHANGE OF PRICE, RENTAL OR OTHER CONDITIONS, WITHDRAWAL WITHOUT NOTICE, AND IS SUBJECT TO ANY SPECIAL LISTING CONDITIONS IMPOSED BY OUR PRINCIPALS, COOPERATING BROKERS, BUYERS, TENANTS AND OTHER PARTIES WHO RECEIVE THIS DOCUMENT SHOULD NOT RELY ON IT, BUT SHOULD USE IT AS A STARTING POINT OF ANALYSIS, AND SHOULD INDEPENDENTLY CONFIRM THE ACCURACY OF THE INFORMATION CONTAINED HEREIN THROUGH A DUE DILIGENCE REVIEW OF THE BOOKS, RECORDS, FILES AND DOCUMENTS THAT CONSTITUTE RELIABLE SOURCES OF THE INFORMATION DESCRIBED HEREIN. LOGOS ARE FOR IDENTIFICATION PURPOSES ONLY AND MAY BE TRADEMARKS OF THEIR RESPECTIVE COMPANIES. NAI Farbman, INC. CA BRE LIC. #01990696.

1,310 - 9,626 SF
MEDICAL OFFICE



FOR LEASE

Suite 205
6,176 RSF

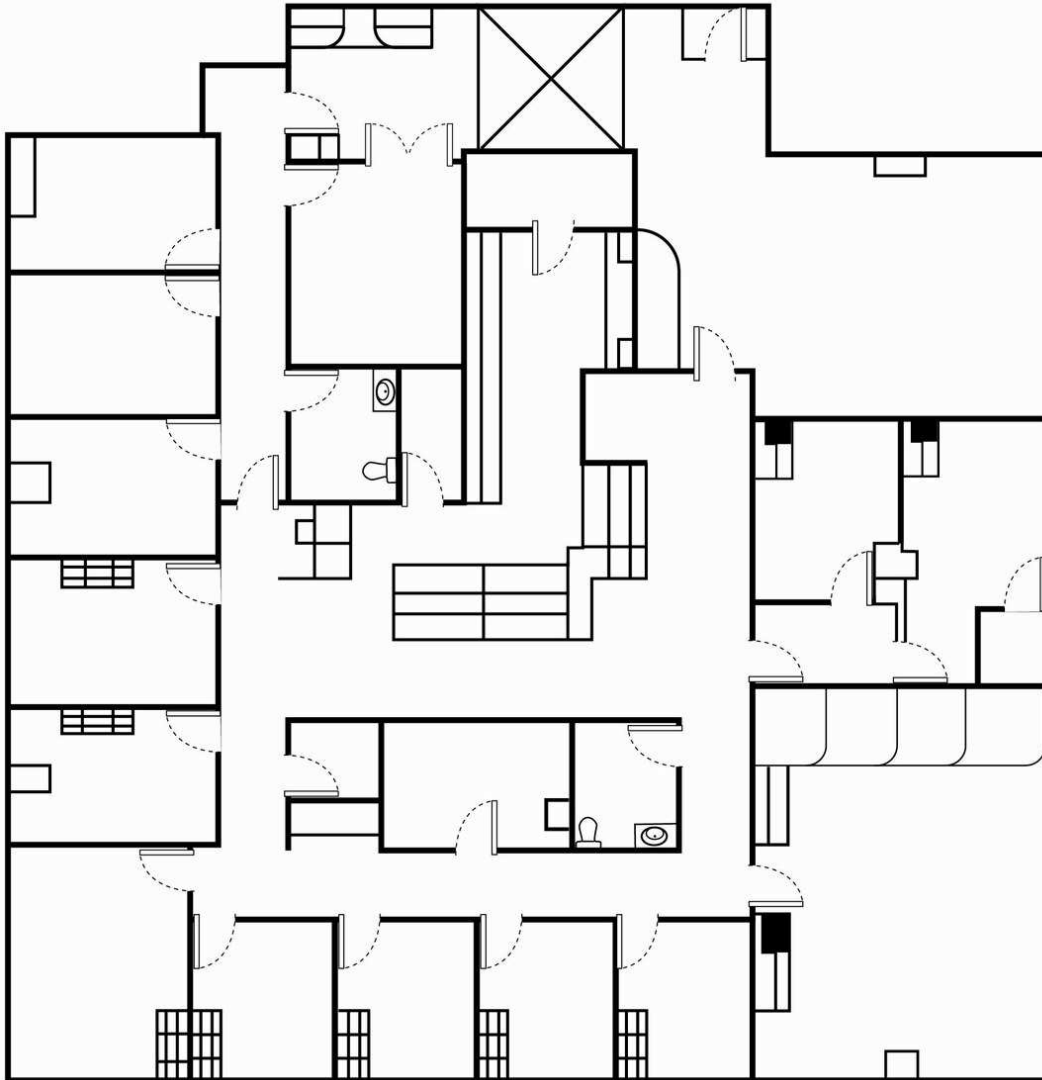


1,310 - 9,626 SF
MEDICAL OFFICE



FOR LEASE

Suite 210
6,082 RSF

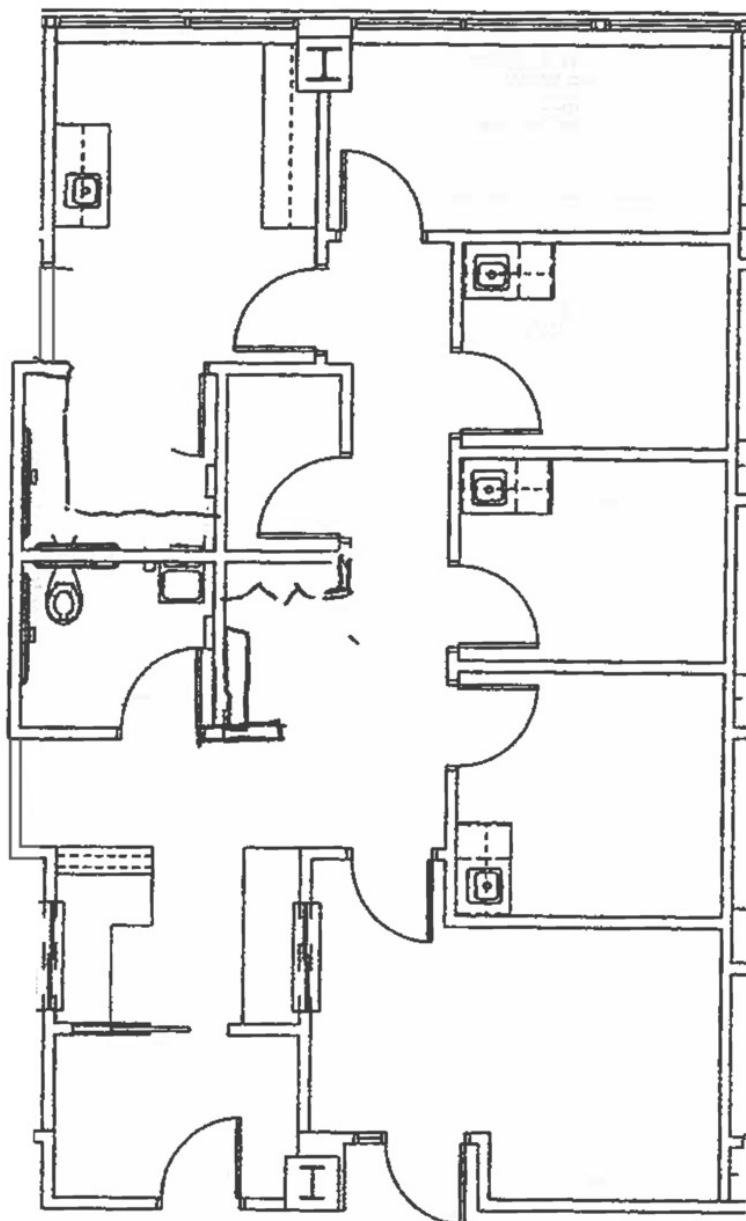


1,310 - 9,626 SF
MEDICAL OFFICE



FOR LEASE

Suite 320A
1,310 SF



Commercial Real Estate Services, Worldwide.

www.naifarbman.com

Jeff Cavazos

Senior Vice President | 248.613.6457
jcavazos@farbman.com

Kristi Lawton

Vice President | 248.798.9828
lawton@farbman.com

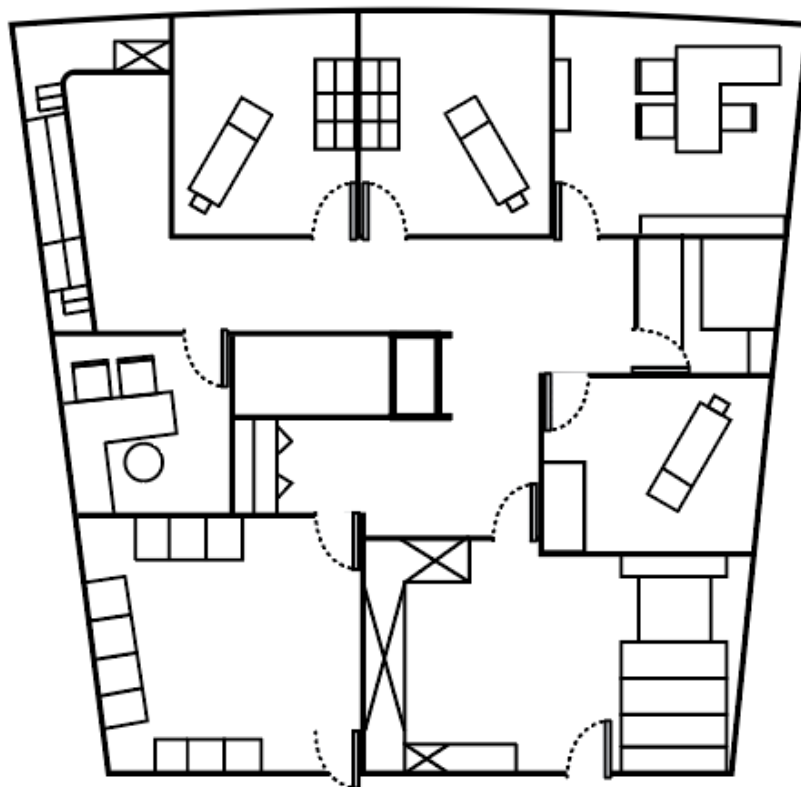
NO WARRANTY, EXPRESS OR IMPLIED, IS MADE AS TO THE ACCURACY OF THE INFORMATION CONTAINED HEREIN. THIS INFORMATION IS SUBMITTED SUBJECT TO ERRORS, OMISSIONS, CHANGE OF PRICE, RENTAL OR OTHER CONDITIONS, WITHDRAWAL WITHOUT NOTICE, AND IS SUBJECT TO ANY SPECIAL LISTING CONDITIONS IMPOSED BY OUR PRINCIPALS, COOPERATING BROKERS, BUYERS, TENANTS AND OTHER PARTIES WHO RECEIVE THIS DOCUMENT SHOULD NOT RELY ON IT, BUT SHOULD USE IT AS A STARTING POINT OF ANALYSIS, AND SHOULD INDEPENDENTLY CONFIRM THE ACCURACY OF THE INFORMATION CONTAINED HEREIN THROUGH A DUE DILIGENCE REVIEW OF THE BOOKS, RECORDS, FILES AND DOCUMENTS THAT CONSTITUTE RELIABLE SOURCES OF THE INFORMATION DESCRIBED HEREIN. LOGOS ARE FOR IDENTIFICATION PURPOSES ONLY AND MAY BE TRADEMARKS OF THEIR RESPECTIVE COMPANIES. NAI Farbman, INC. CA BRE LIC. #01990696.

1,310 - 9,626 SF
MEDICAL OFFICE



FOR LEASE

Suite 402
2,060 RSF

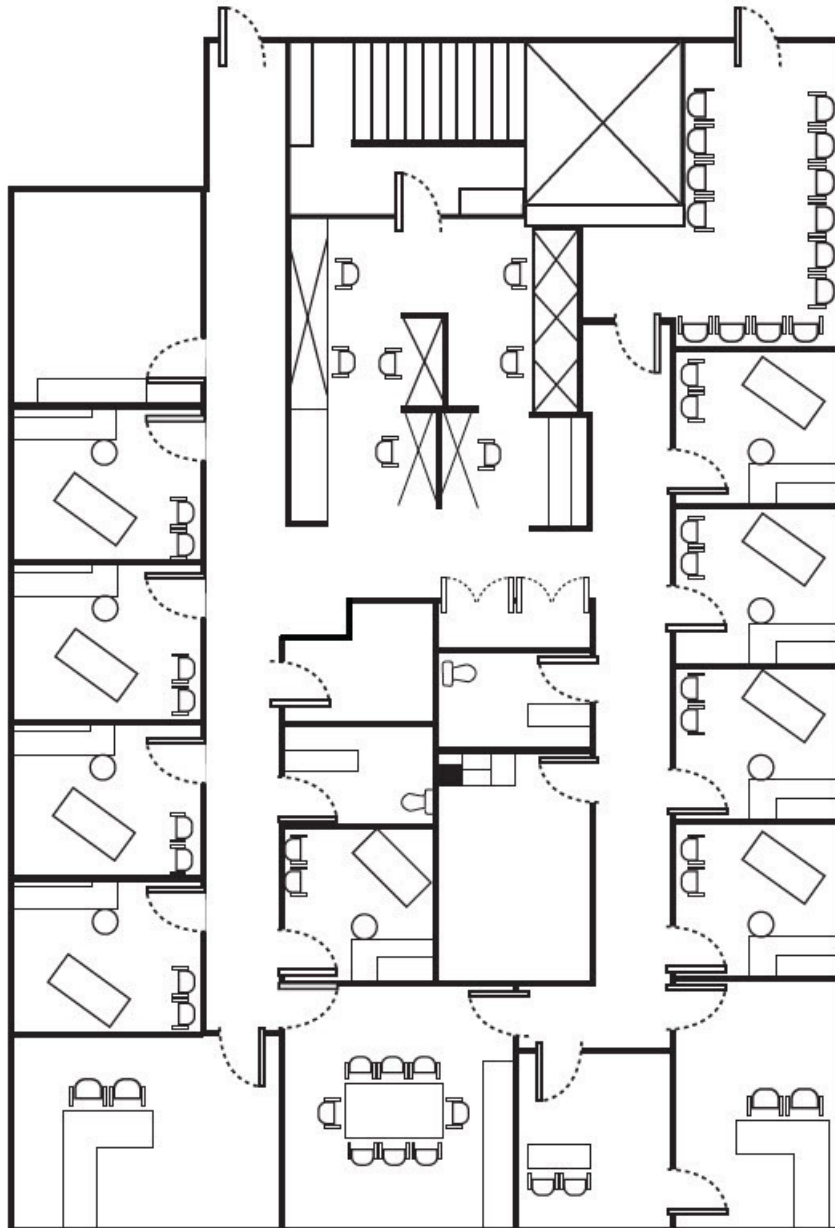


1,310 - 9,626 SF MEDICAL OFFICE



FOR LEASE

Suite 425 4,480 SF

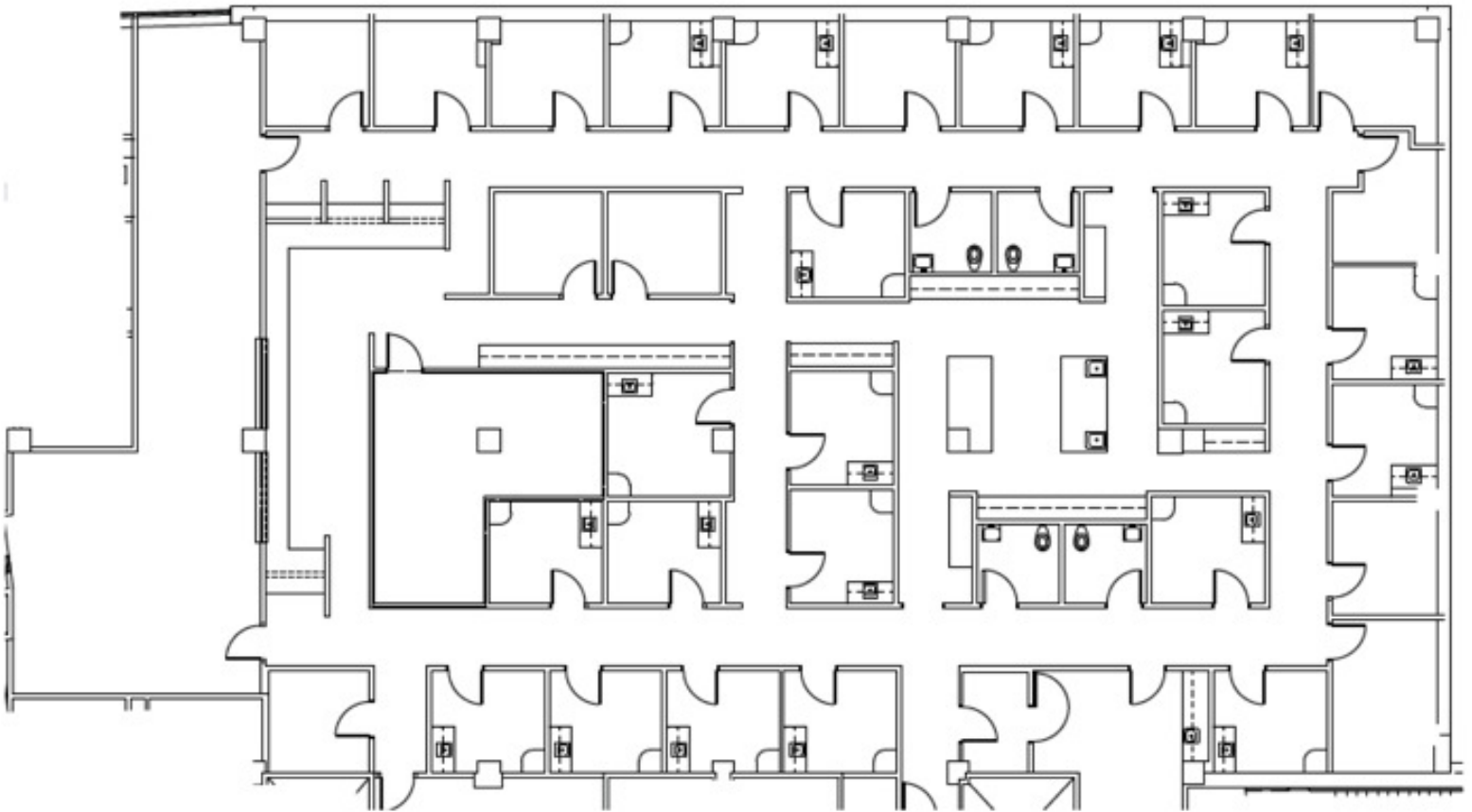


1,310 - 9,626 SF
MEDICAL OFFICE



FOR LEASE

Suite 500
9,626 SF

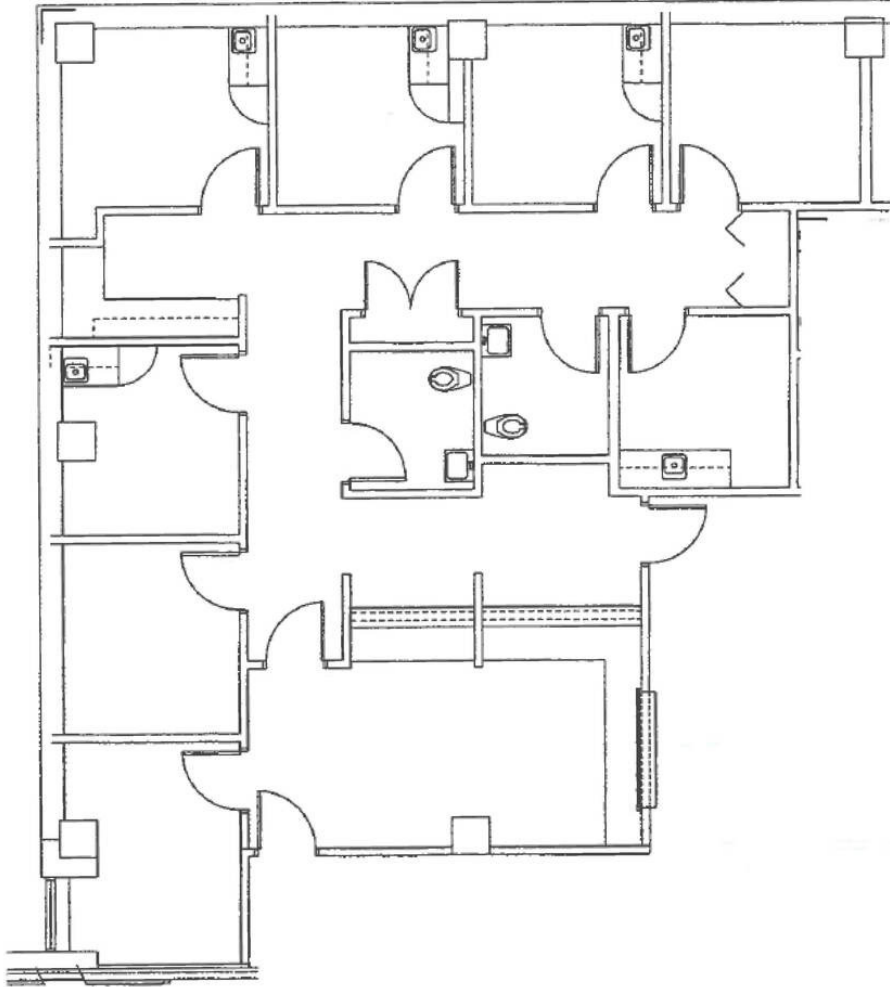


1,674 - 9,640 SF
MEDICAL OFFICE



FOR LEASE

Suite 510
2,168 SF



Commercial Real Estate Services, Worldwide.

www.naifarbman.com

Jeff Cavazos
Senior Vice President | 248.613.6457
jcavazos@farbman.com

Kristi Lawton
Vice President | 248.798.9828
lawton@farbman.com



NO WARRANTY, EXPRESS OR IMPLIED, IS MADE AS TO THE ACCURACY OF THE INFORMATION CONTAINED HEREIN. THIS INFORMATION IS SUBMITTED SUBJECT TO ERRORS, OMISSIONS, CHANGE OF PRICE, RENTAL OR OTHER CONDITIONS, WITHDRAWAL WITHOUT NOTICE, AND IS SUBJECT TO ANY SPECIAL LISTING CONDITIONS IMPOSED BY OUR PRINCIPALS, COOPERATING BROKERS, BUYERS, TENANTS AND OTHER PARTIES WHO RECEIVE THIS DOCUMENT SHOULD NOT RELY ON IT, BUT SHOULD USE IT AS A STARTING POINT OF ANALYSIS, AND SHOULD INDEPENDENTLY CONFIRM THE ACCURACY OF THE INFORMATION CONTAINED HEREIN THROUGH A DUE DILIGENCE REVIEW OF THE BOOKS, RECORDS, FILES AND DOCUMENTS THAT CONSTITUTE RELIABLE SOURCES OF THE INFORMATION DESCRIBED HEREIN. LOGOS ARE FOR IDENTIFICATION PURPOSES ONLY AND MAY BE TRADEMARKS OF THEIR RESPECTIVE COMPANIES. NAI Farbman, INC. CA BRE LIC. #01990696.