



OFFICE SPACE FOR LEASE

- RBA: 121,914 SF
- Stories: 7
- Year Built: 1979
- Parking: Surface - 69 (3.00/1,000 SF)

BUILDING NOTES

- 0.5 Miles from I-270
- Less than 5 Miles from MD-200 (Intercounty Connector)
- 5 Miles from Shady Grove Metro Station (Red Line)
- Potential FLASH on MD-355 (1.2 Miles)
- 1.5 miles from Watkins Mill Interchange
- Adjacent to the National Institute of Standards & Technology
- More than 30 retail options in walking distance

Kenneth Fellows
kfellows@klnb.com
301-222-0210

Robert Pugh
rpugh@klnb.com
301-222-0211

Keiry Martinez
kmartinez@klnb.com
703-334-5629

CLOSE-UP

THE OFFICES AT QUINCE ORCHARD

656 QUINCE ORCHARD ROAD, GAITHERSBURG, MARYLAND 20878



Kenneth Fellows
kfellows@klnb.com
301-222-0210

Robert Pugh
rpugh@klnb.com
301-222-0211

Keiry Martinez
kmartinez@klnb.com
703-334-5629



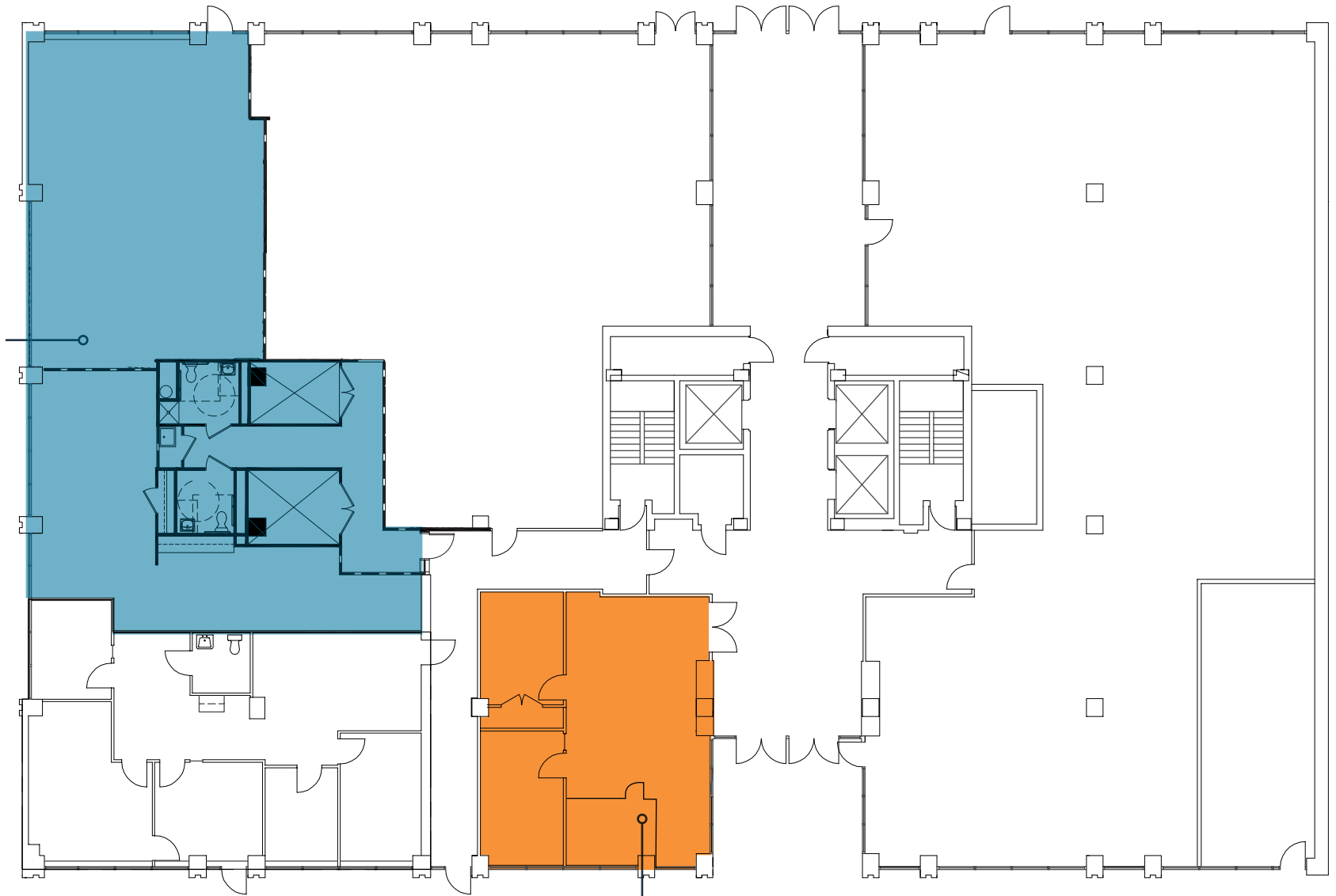
FLOOR PLAN

THE OFFICES AT QUINCE ORCHARD

656 QUINCE ORCHARD ROAD, GAITHERSBURG, MARYLAND 20878

1ST FLOOR

SUITE 130: 2,797 SF



SUITE 102: 971 SF

Kenneth Fellows
kfellows@klnb.com
301-222-0210

Robert Pugh
rpugh@klnb.com
301-222-0211

Keiry Martinez
kmartinez@klnb.com
703-334-5629



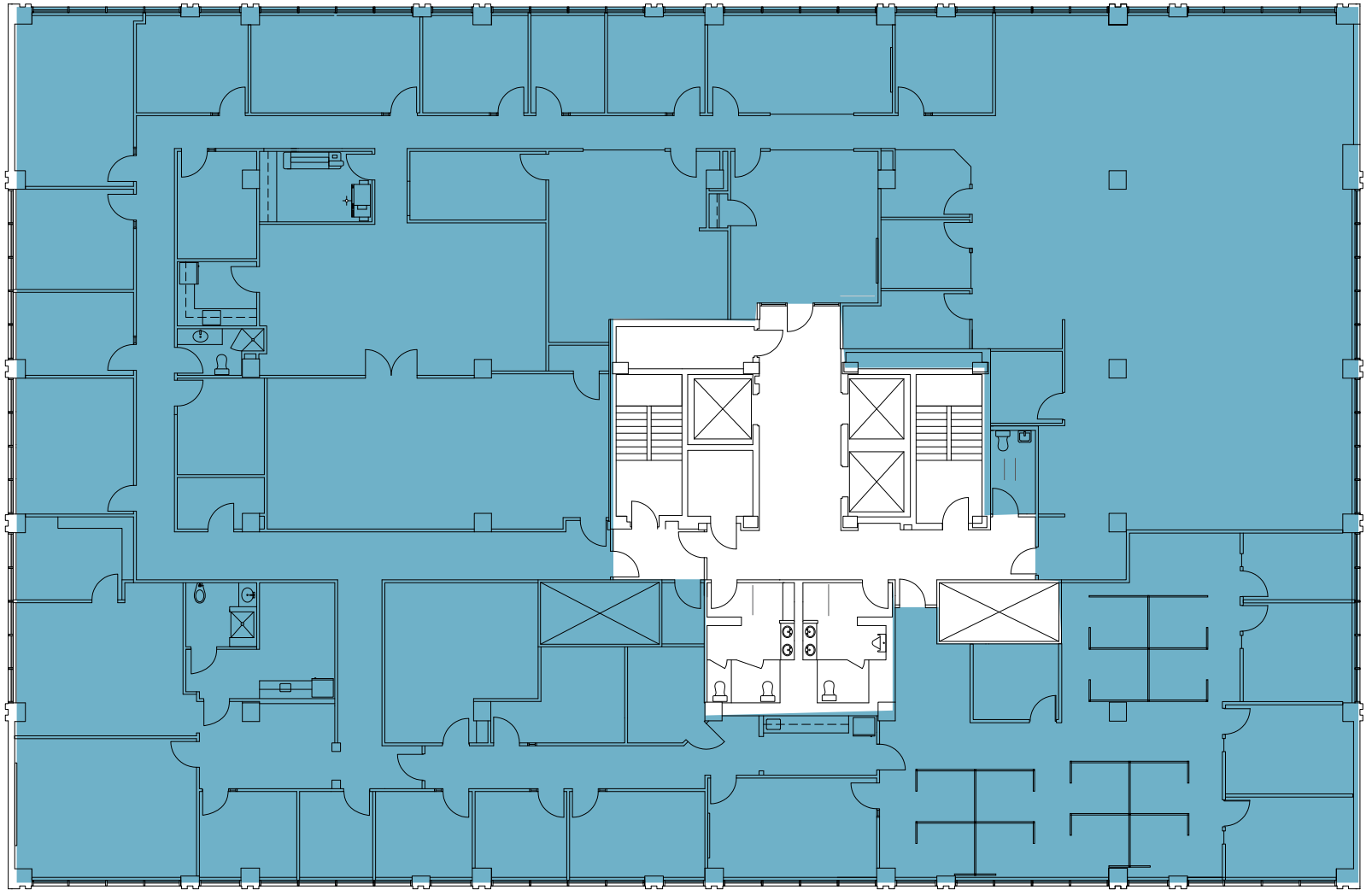
FLOOR PLAN

THE OFFICES AT QUINCE ORCHARD

656 QUINCE ORCHARD ROAD, GAITHERSBURG, MARYLAND 20878

3RD FLOOR

SUITE 300:
15,201 SF



Kenneth Fellows
kfellows@klnb.com
301-222-0210

Robert Pugh
rpugh@klnb.com
301-222-0211

Keiry Martinez
kmartinez@klnb.com
703-334-5629



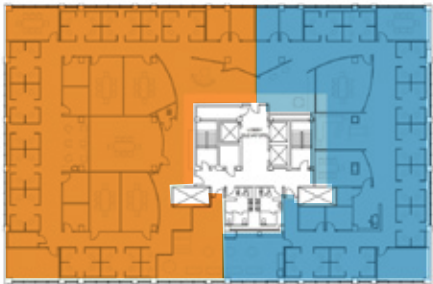
FLOOR PLAN

THE OFFICES AT QUINCE ORCHARD

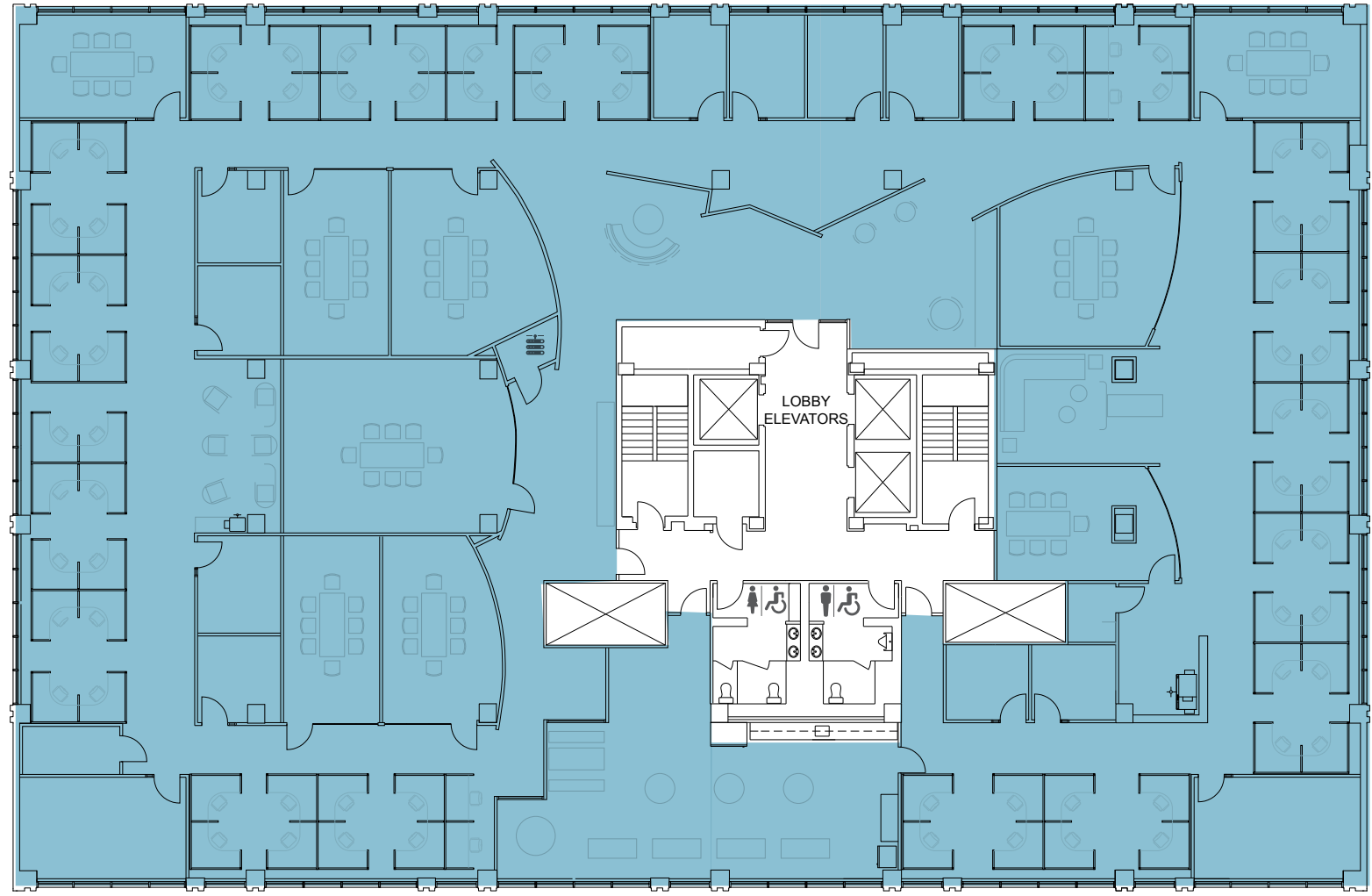
656 QUINCE ORCHARD ROAD, GAITHERSBURG, MARYLAND 20878

4TH FLOOR

15,201 SF



Floor can be divided: 7,010 - 15,201 SF



Kenneth Fellows
kfellows@klnb.com
301-222-0210

Robert Pugh
rpugh@klnb.com
301-222-0211

Keiry Martinez
kmartinez@klnb.com
703-334-5629



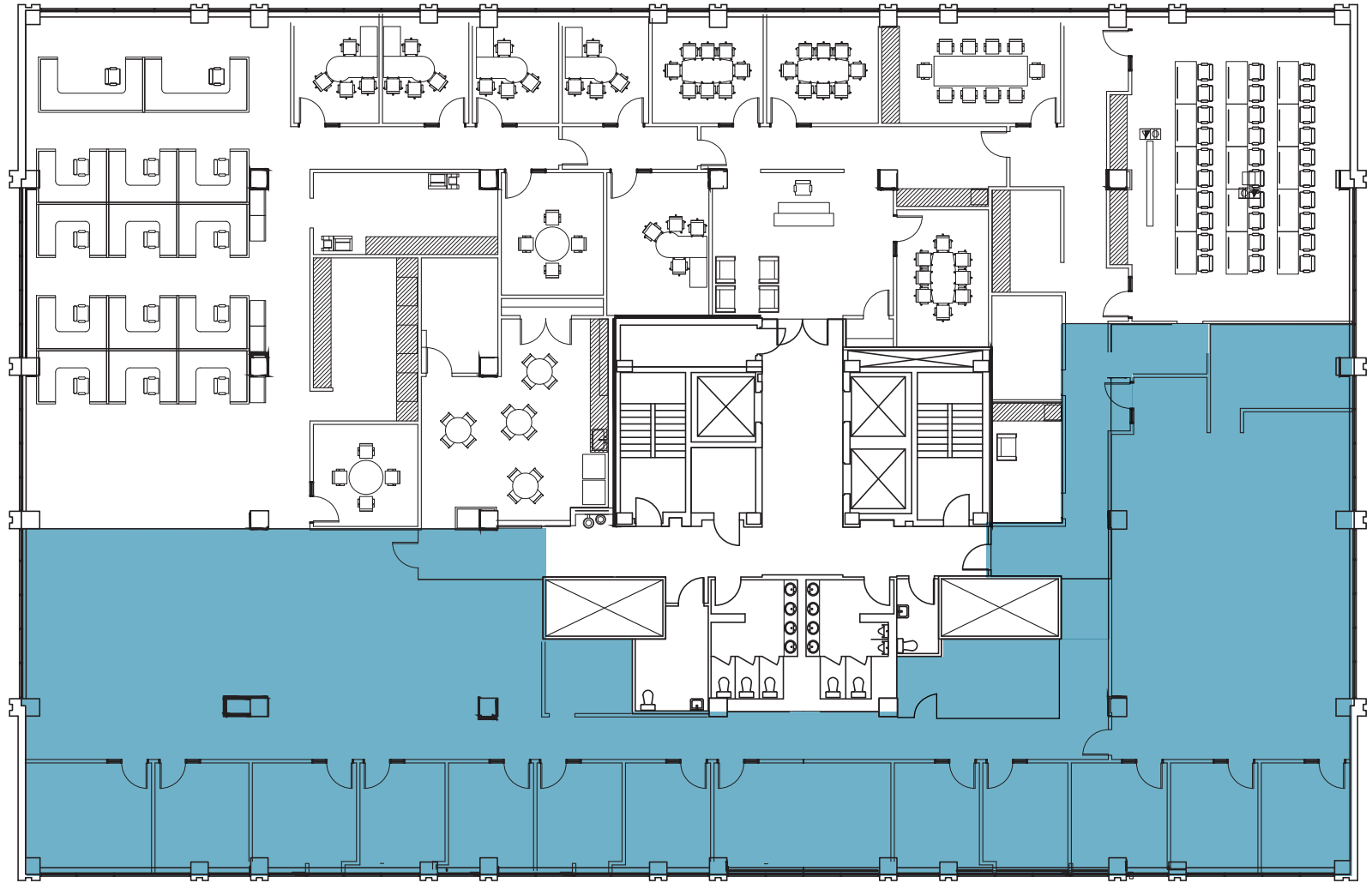
FLOOR PLAN

THE OFFICES AT QUINCE ORCHARD

656 QUINCE ORCHARD ROAD, GAITHERSBURG, MARYLAND 20878

5TH FLOOR

SUITE 510/520:
3,238 - 6,811 SF



Kenneth Fellows
kfellows@klnb.com
301-222-0210

Robert Pugh
rpugh@klnb.com
301-222-0211

Keiry Martinez
kmartinez@klnb.com
703-334-5629



FLOOR PLAN

THE OFFICES AT QUINCE ORCHARD

656 QUINCE ORCHARD ROAD, GAITHERSBURG, MARYLAND 20878

7TH FLOOR

SUITE 700: 2,931 SF

SUITE 740: 5,072 SF

* Suites can be combined
up to 8,003 SF



Kenneth Fellows
kfellows@klnb.com
301-222-0210

Robert Pugh
rpugh@klnb.com
301-222-0211

Keiry Martinez
kmartinez@klnb.com
703-334-5629



PHOTOS

THE OFFICES AT QUINCE ORCHARD

656 QUINCE ORCHARD ROAD, GAITHERSBURG, MARYLAND 20878



Kenneth Fellows
kfellows@klnb.com
301-222-0210

Robert Pugh
rpugh@klnb.com
301-222-0211

Keiry Martinez
kmartinez@klnb.com
703-334-5629





THE OFFICES AT QUINCE ORCHARD

656 QUINCE ORCHARD ROAD, GAITHERSBURG, MARYLAND 20878

FOR MORE INFORMATION, PLEASE CONTACT:

KENNETH FELLOWS

kfellows@klnb.com
301-222-0210

ROBERT PUGH

rpugh@klnb.com
301-222-0211

KEIRY MARTINEZ

kmartinez@klnb.com
703-334-5629

12435 Park Potomac Ave, Suite 250, Rockville, MD, 20854

.....

klnb.com



[instagram.com/klnbcre](https://www.instagram.com/klnbcre)



[linkedin.com/company/klnb](https://www.linkedin.com/company/klnb)



[facebook.com/KLNBCRE](https://www.facebook.com/KLNBCRE)

CLICK TO VIEW PROPERTY WEBSITE

While we have no reason to doubt the accuracy of any of the information supplied, we cannot, and do not, guarantee its accuracy. All information should be independently verified prior to a purchase or lease of the property. We are not responsible for errors, omissions, misuse, or misinterpretation of information contained herein and make no warranty of any kind, express or implied, with respect to the property or any other matters.