

USEABLE AREA x (R/U RATIO) = SUITE RENTABLE AREA

SUITE #1 - 1,160 x 1.1581 = 1,344 SF

SUITE #2 - 1,104 x 1.1581 = 1,278 SF

SUITE #3 - 1,791 x 1.1581 = 2,074 SF

SUITE #4 - 1,550 x 1.1581 = 1,795 SF
= 6,491 SF

NOTE: METHOD OF CALCULATION PER ANSIBOMA Z65.1.

USEABLE AREA - COMMON AREAS

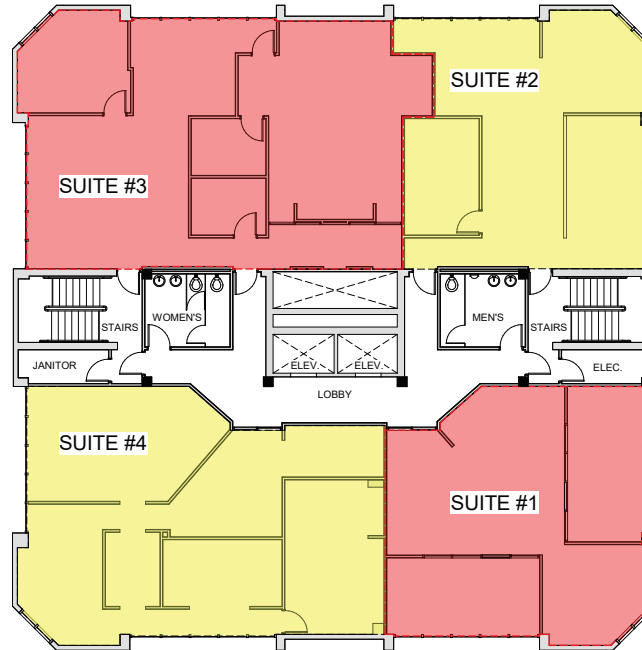
LOBBY - 445 SF

WOMENS RESTROOM - 117 SF

MENS RESTROOM - 117 SF

JANITOR - 56 SF

ELEC. - 56 SF



1 5TH FLOOR - SUITES RENTABLE AREA
1/8" = 1'-0"

5TH FLOOR RENTABLE SUITES

JQH OFFICE BUILDING

300 SOUTH JOHN Q. HAMMONS PARKWAY - SPRINGFIELD MISSOURI



NORTH



05/18/2020