



SALT LAKE OFFICE SUITE FOR LEASE

376 EAST 400 SOUTH, SALT LAKE CITY UTAH 84111

RATE REDUCTION!



PROPERTY HIGHLIGHTS

- Downtown Office Suite Available
- Suite 310: 3,112 SF Office
- Suite 312: 1,441 SF Office
- ADA Accessible with Elevator Access
- On-Site Covered Parking Available:
2.81/1,000 SF
- TRAX Station within Walking Distance
- Located Downtown within the Central Business District

FREE RENT AVAILABLE | LEASE RATE REDUCED!
from ~~\$21.50/SF~~ to **\$18.00/SF FULL SERVICE**

DEMOGRAPHICS

	1 Mile	3 Mile	5 Mile
Population	15,537	57,003	92,298
Households	28,842	147,819	251,715
Avg. Household Income	\$71,948	\$86,374	\$89,001

TRAFFIC COUNTS

University Blvd: 24,000 Annual Average Daily Traffic
State Street: 37,000 Annual Average Daily Traffic

CONTACT

801.617.1700

GAVIN PERRYMAN |

CRYSTAL JOHNSON |

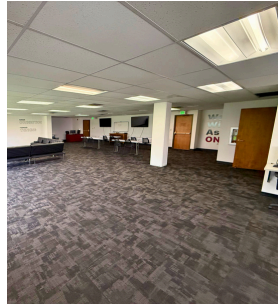
GAVIN.PERRYMAN@CRCNATIONWIDE.COM

CRYSTAL.JOHNSON@CRCNATIONWIDE.COM



SALT LAKE OFFICE SUITE FOR LEASE

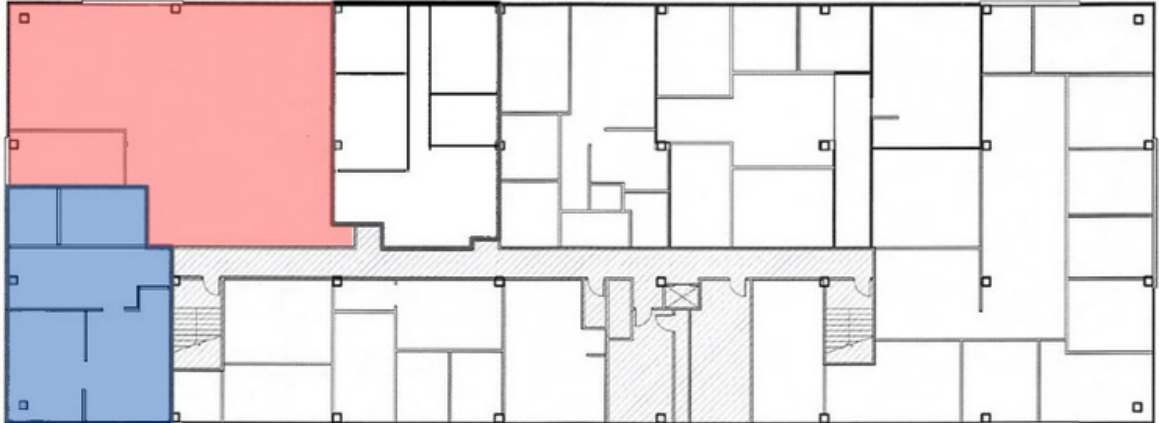
376 EAST 400 SOUTH, SALT LAKE CITY UTAH 84111



THIRD FLOOR

SUITE 310: 3,112 SF

SUITE 312: 1,441 SF



This information is given with the understanding that all negotiations and/or real estate activity related to the property described above shall be conducted through this cRc Nationwide office. The above information while not guaranteed, was obtained from sources we believe to be reliable.

CONTACT
801.617.1700

GAVIN PERRYMAN | GAVIN.PERRYMAN@CRCNATIONWIDE.COM
CRYSTAL JOHNSON | CRYSTAL.JOHNSON@CRCNATIONWIDE.COM