

Publix #1538 - Loxahatchee Grove Commons

15673 Southern Boulevard
Loxahatchee, FL 33470
Lat 26.684, Long -80.293

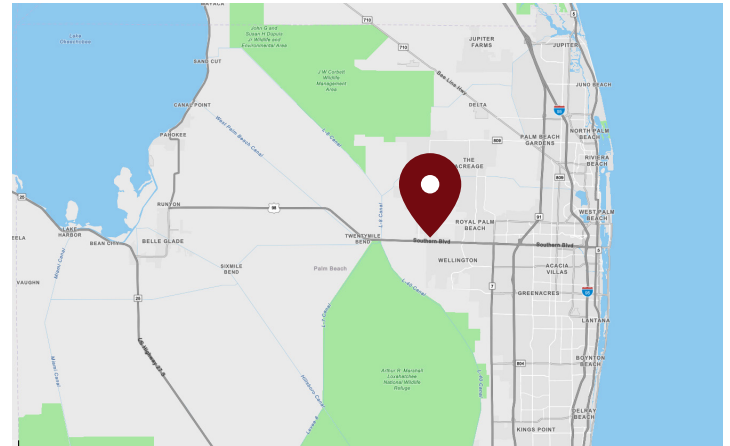
FOR LEASE



1,200 SF AVAILABLE

PROPERTY HIGHLIGHTS

- Publix and Tractor Supply Co. Anchored
- Signaled Intersection
- Adjacent to Palm Beach State College who has their own Egress into the Center
- On the Going Home Side of Southern Boulevard for Residence in the Acreage and Westlake Neighborhoods
- Traffic Count: 36,000 VPD



DEMOGRAPHICS	1 Mile	3 Miles	5 Miles
Total Population	1,543	24,895	82,893
Daytime Population	1,670	21,967	66,184
Total Households	493	8,554	29,955
Avg. HH Income	\$230,165	\$154,972	\$141,276

Data provided by Placer Labs Inc. (www.placer.ai) & Esri

Michael Rautbord

561.447.8529 | mrautbord@crossmanco.com
980 North Federal Highway, Suite 434, Boca Raton, FL

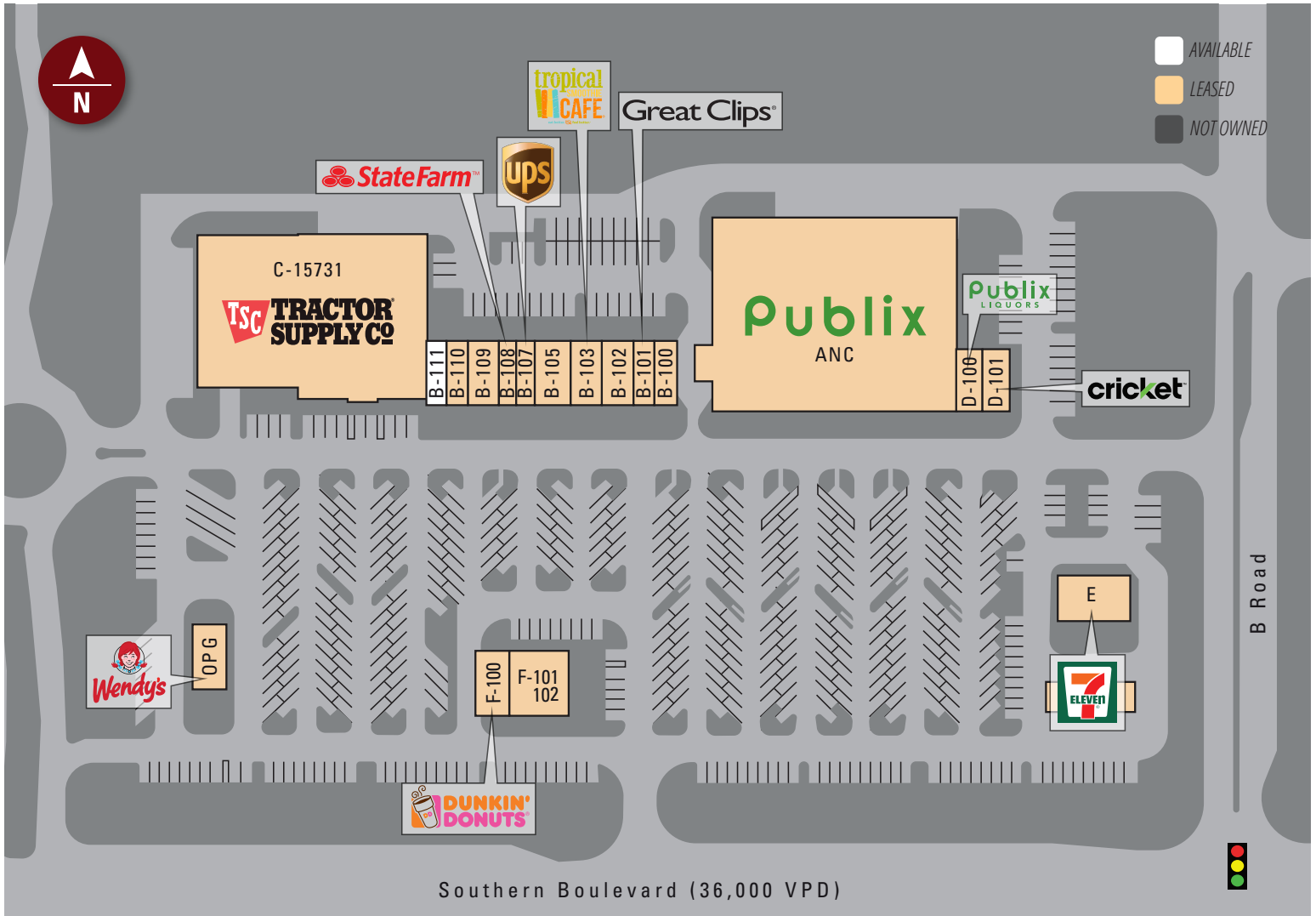
Licensed Real Estate Broker. No warranty expressed or implied has been made to the accuracy of the information provided herein, no liability assumed for error or omission.



www.crossmanco.com

Publix #1538 - Loxahatchee Grove Commons

15673 Southern Boulevard
 Loxahatchee, FL 33470
 Lat 26.684, Long -80.293



Suite	Tenant	Size
ANC	Publix	45,600
2 D-100	Publix Liquors	1,500
3 D-101	Cricket	1,500
4 B-100	Get Greek	1,200
5 B-101	Great Clips	1,200
6 B-102	Armani Nails	1,800
7 B-103	Tropical Cafe	1,800
8 B-105	Fired Up Pizza	1,950

Suite	Tenant	Size
9 B-107	The UPS Store	1,200
10 B-108	State Farm Insurance	1,200
11 B-109	Groves Dental	1,800
12 B-110	The Pool Depot	1,200
13 B-111	AVAILABLE	1,200
14 C-15731	Tractor Supply Co	19,097
OP G	Wendy's	3,767
F-100	Dunkin Donuts	1,800

Suite	Tenant	Size
F-101/102	Urgent Care	3,400
E	7-Eleven	3,010
TOTAL		94,224

Michael Rautbord

561.447.8529 | mrautbord@crossmanco.com

980 North Federal Highway, Suite 434, Boca Raton, FL

Licensed Real Estate Broker. No warranty expressed or implied has been made to the accuracy of the information provided herein, no liability assumed for error or omission.



Crossman & Company

www.crossmanco.com

Publix #1538 - Loxahatchee Grove Commons

15673 Southern Boulevard
Loxahatchee, FL 33470
Lat 26.684, Long -80.293

FOOT TRAFFIC OVERVIEW

EST. # OF CUSTOMERS ANNUALLY



EST. # OF VISITS ANNUALLY



AVG. VISITS / CUSTOMER



AVG. LENGTH-OF-STAY / VISIT



TOP 3 DAYS



Saturday	172,961
Sunday	162,839
Friday	153,142

OF VISITS

TOP 3 HOURS

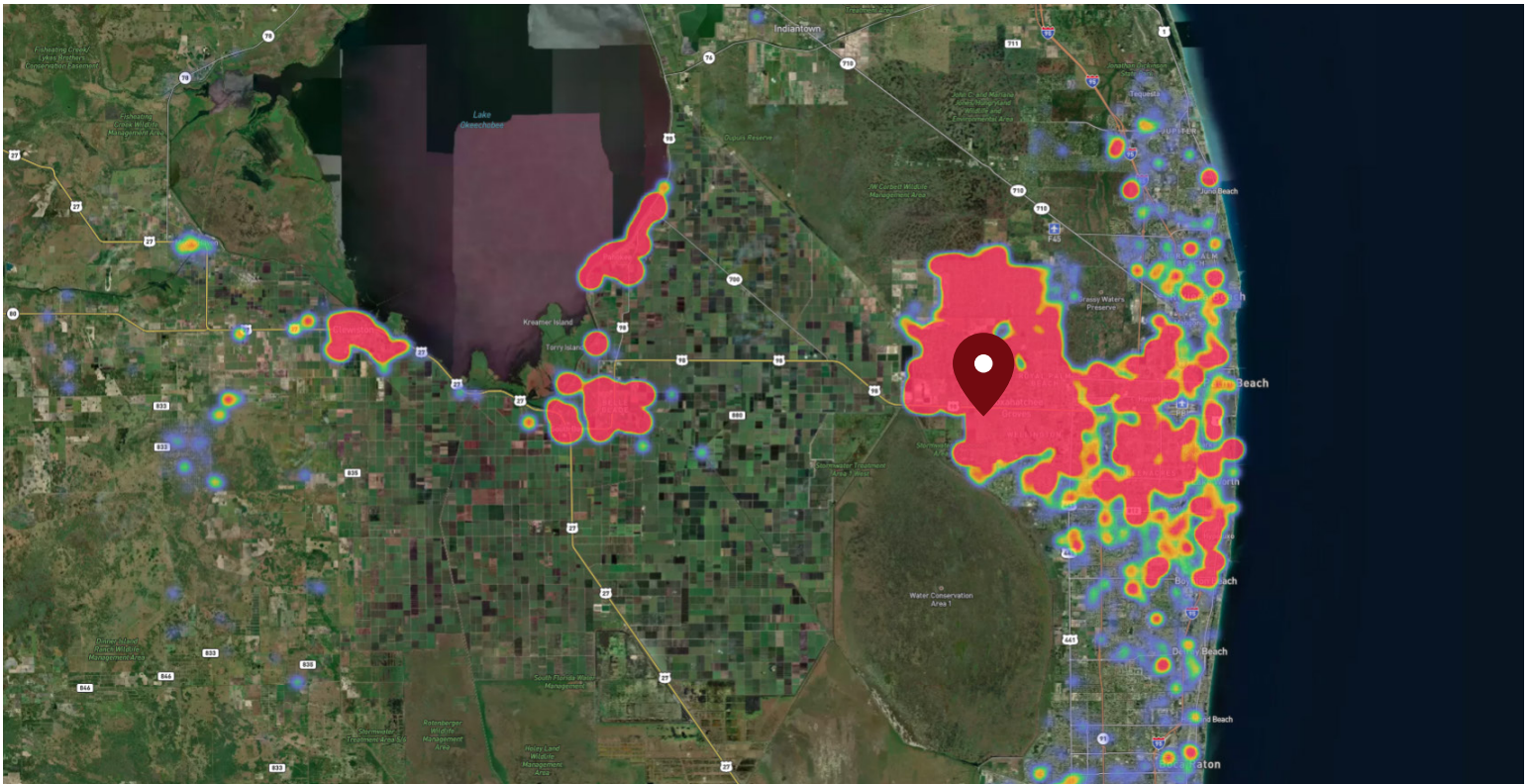


5-6 PM	141,934
4-5 PM	134,633
6-7 PM	127,845

OF VISITS

Data provided by Placer Labs Inc. (www.placer.ai) October 1, 2023 - September 30, 2024

SITE VISIT DENSITY



Red, orange, and yellow colors represent the location of 60% of site visitors

Data provided by Placer Labs Inc. (www.placer.ai)

Michael Rautbord

561.447.8529 | mrautbord@crossmanco.com

980 North Federal Highway, Suite 434, Boca Raton, FL

Licensed Real Estate Broker. No warranty expressed or implied has been made to the accuracy of the information provided herein, no liability assumed for error or omission.



www.crossmanco.com