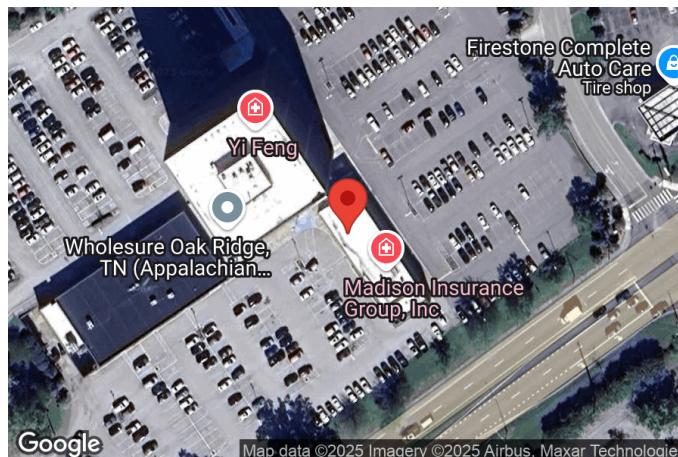


# A-208 Available Space

**CREATED ON**  
2024-07-10

**LOCATION**  
800 Oak Ridge Turnpike  
37830 Oak Ridge  
Tennessee  
US



<b>Total area</b> 1540.37 sq ft	<b>Floors</b> 1	<b>Rooms</b> 9	<b>Conference room</b> 1
------------------------------------	--------------------	-------------------	-----------------------------

**Photos**

8 Photos (see photos page)

**Notes**

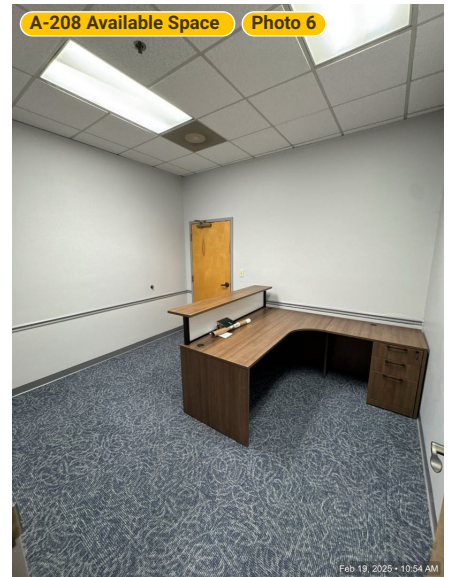
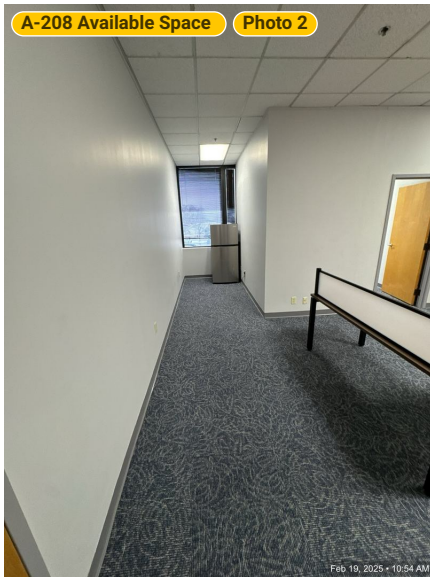
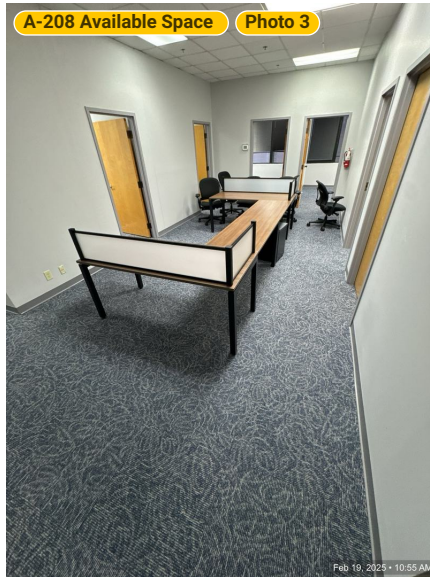
Office Space

# A-208 Available Space

800 Oak Ridge Turnpike, 37830 Oak Ridge, Tennessee, US  
TOTAL AREA: 1540.37 sq ft • LIVING AREA: 1540.37 sq ft • FLOORS: 1 • ROOMS: 9



## ▼ Photos/A-208 Available Space



THIS FLOOR PLAN IS PROVIDED WITHOUT WARRANTY OF ANY KIND. SENSOPIA DISCLAIMS ANY WARRANTY INCLUDING, WITHOUT LIMITATION, SATISFACTORY QUALITY OR ACCURACY OF DIMENSIONS.

# A-208 Available Space

800 Oak Ridge Turnpike, 37830 Oak Ridge, Tennessee, US  
TOTAL AREA: 1540.37 sq ft • LIVING AREA: 1540.37 sq ft • FLOORS: 1 • ROOMS: 9

---



## ▼ Photos/A-208 Available Space



---

THIS FLOOR PLAN IS PROVIDED WITHOUT WARRANTY OF ANY KIND. SENSOPIA DISCLAIMS ANY WARRANTY INCLUDING, WITHOUT LIMITATION, SATISFACTORY QUALITY OR ACCURACY OF DIMENSIONS.

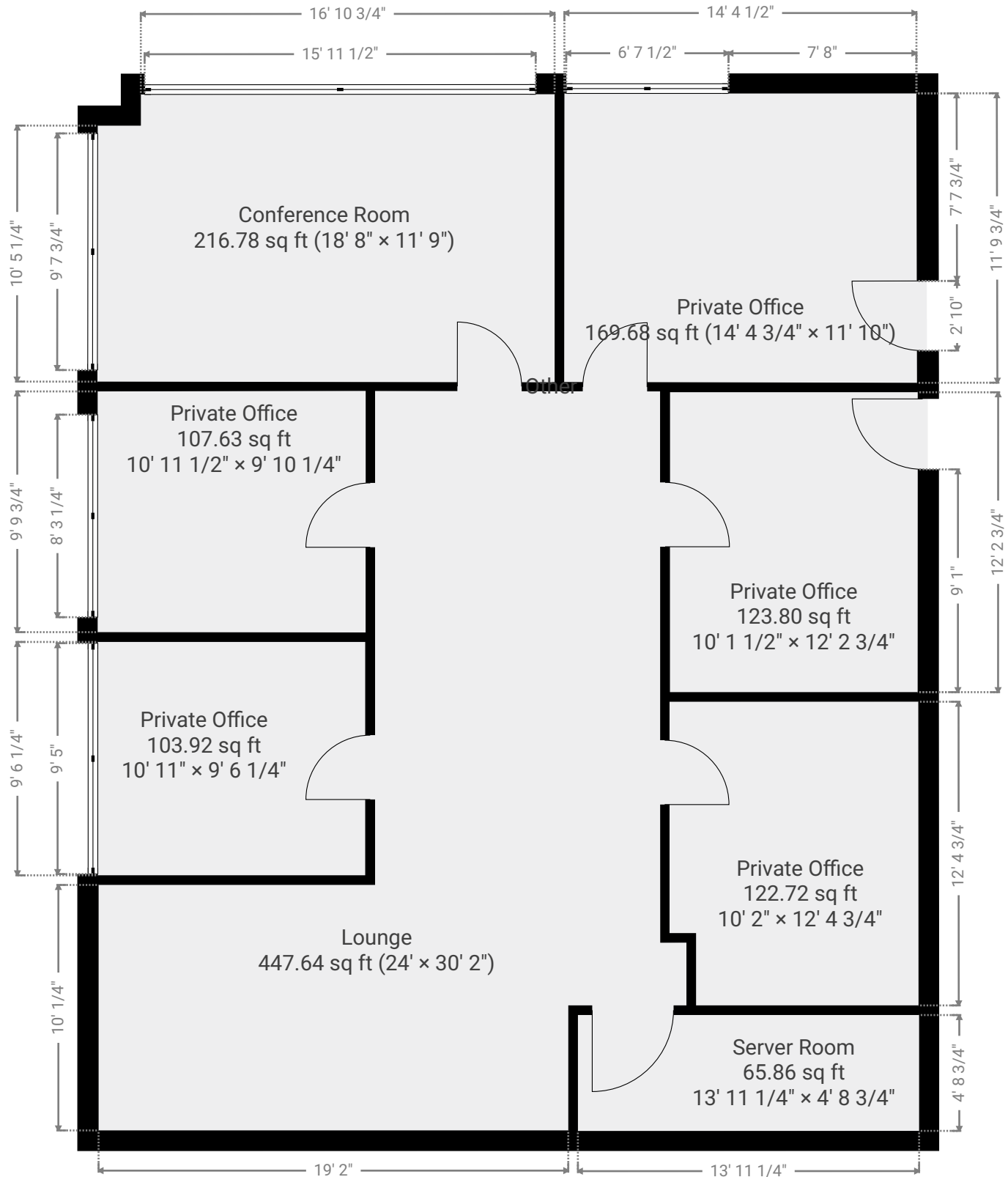
# A-208 Available Space

800 Oak Ridge Turnpike, 37830 Oak Ridge, Tennessee, US  
 TOTAL AREA: 1540.37 sq ft • LIVING AREA: 1540.37 sq ft • FLOORS: 1 • ROOMS: 9



## ▼ Ground Floor

TOTAL AREA: 1540.37 sq ft • LIVING AREA: 1540.37 sq ft • ROOMS: 9



THIS FLOOR PLAN IS PROVIDED WITHOUT WARRANTY OF ANY KIND. SENSOPIA DISCLAIMS ANY WARRANTY INCLUDING, WITHOUT LIMITATION, SATISFACTORY QUALITY OR ACCURACY OF DIMENSIONS.



1:69

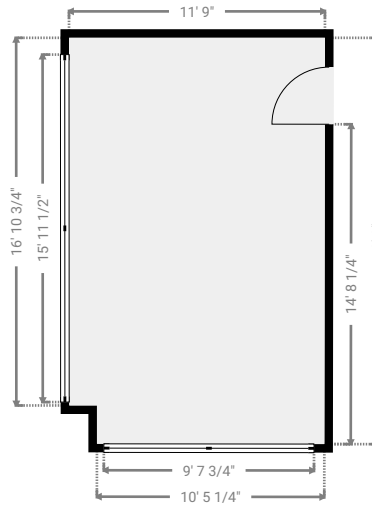
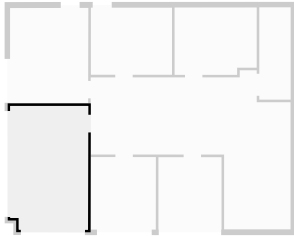
# A-208 Available Space

800 Oak Ridge Turnpike, 37830 Oak Ridge, Tennessee, US  
 TOTAL AREA: 1540.37 sq ft • LIVING AREA: 1540.37 sq ft • FLOORS: 1 • ROOMS: 9



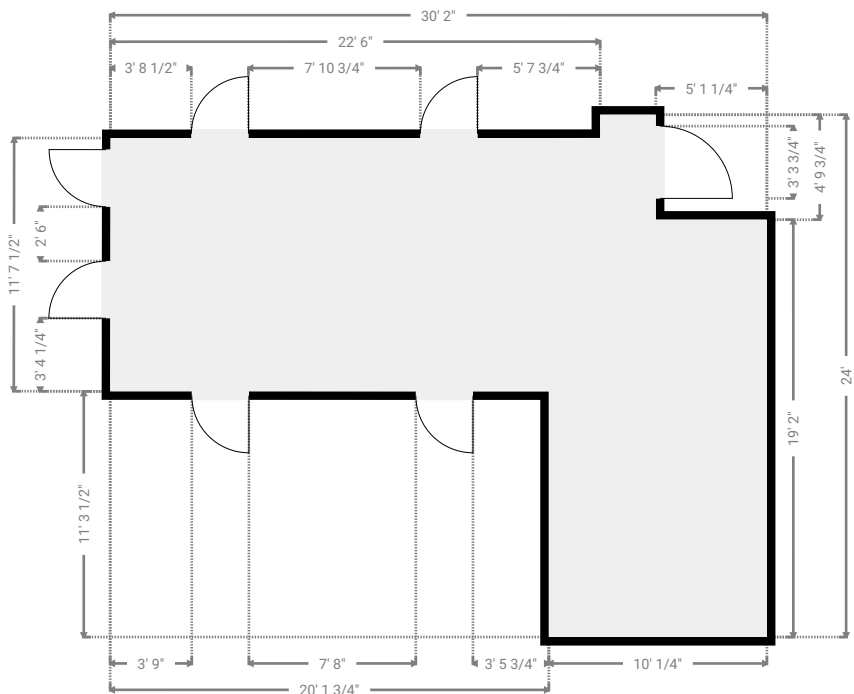
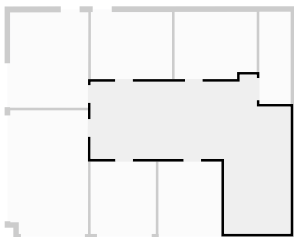
## ▼ Conference Room Ground Floor

WIDTH: 11' 9" • LENGTH: 18' 8" • CEILING HEIGHT: 10'  
 AREA: 216.78 sq ft • PERIMETER: 60' 9 1/2"



## ▼ Lounge Ground Floor

WIDTH: 30' 2" • LENGTH: 24' • CEILING HEIGHT: 10'  
 AREA: 447.64 sq ft • PERIMETER: 108' 3 3/4"



THIS FLOOR PLAN IS PROVIDED WITHOUT WARRANTY OF ANY KIND. SENSOPIA DISCLAIMS ANY WARRANTY INCLUDING, WITHOUT LIMITATION, SATISFACTORY QUALITY OR ACCURACY OF DIMENSIONS.



# A-208 Available Space

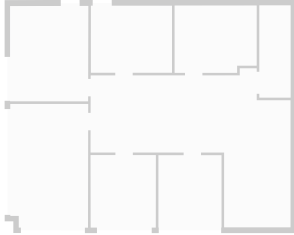
800 Oak Ridge Turnpike, 37830 Oak Ridge, Tennessee, US

TOTAL AREA: 1540.37 sq ft • LIVING AREA: 1540.37 sq ft • FLOORS: 1 • ROOMS: 9



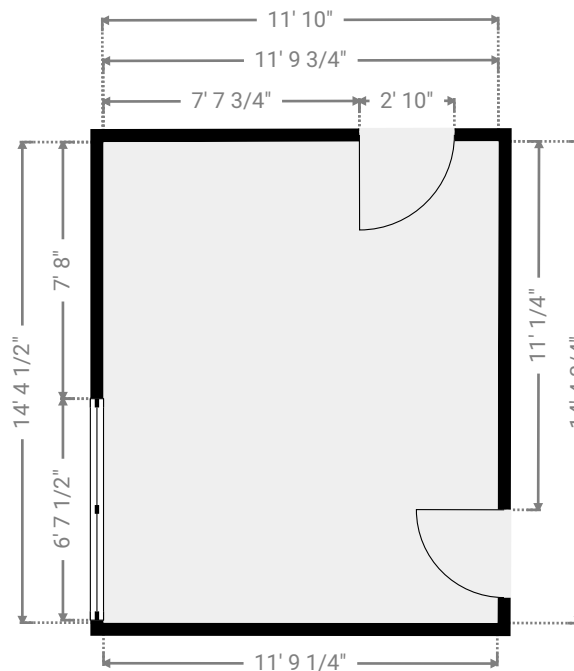
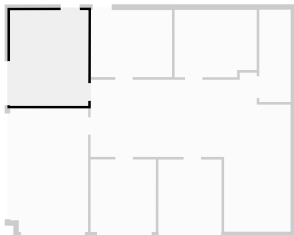
## ▼ Other Ground Floor

WIDTH: • LENGTH: 11' 1/4" • CEILING HEIGHT: 10'  
AREA: 0.00 sq ft • PERIMETER: 1' 10 1/4"

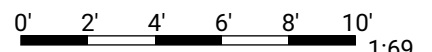


## ▼ Private Office Ground Floor

WIDTH: 11' 10" • LENGTH: 14' 4 3/4" • CEILING HEIGHT: 10'  
AREA: 169.68 sq ft • PERIMETER: 52' 4 1/4"



THIS FLOOR PLAN IS PROVIDED WITHOUT WARRANTY OF ANY KIND. SENSOPIA DISCLAIMS ANY WARRANTY INCLUDING, WITHOUT LIMITATION, SATISFACTORY QUALITY OR ACCURACY OF DIMENSIONS.



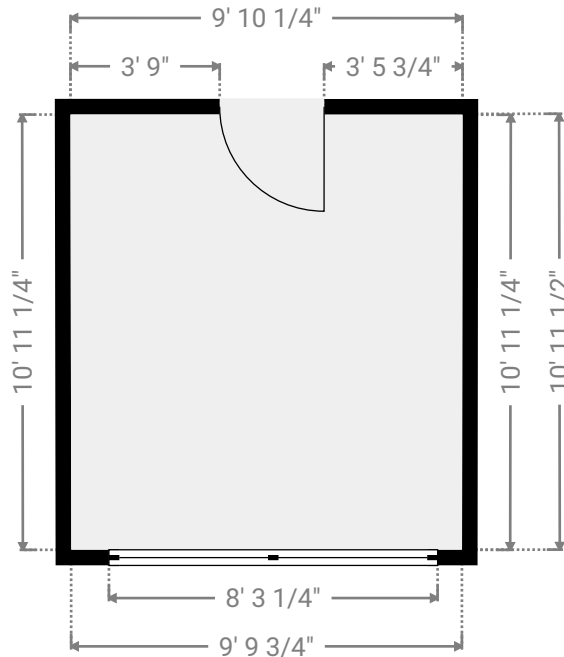
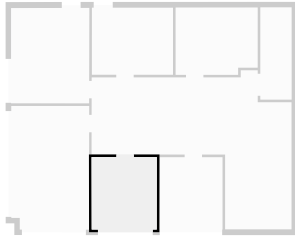
# A-208 Available Space

800 Oak Ridge Turnpike, 37830 Oak Ridge, Tennessee, US  
 TOTAL AREA: 1540.37 sq ft • LIVING AREA: 1540.37 sq ft • FLOORS: 1 • ROOMS: 9



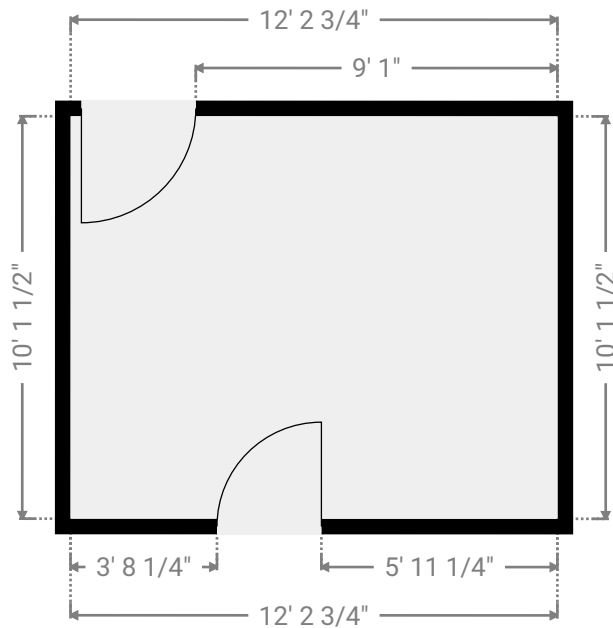
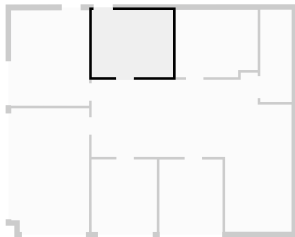
## ▼ Private Office Ground Floor

WIDTH: 9' 10 1/4" • LENGTH: 10' 11 1/2" • CEILING HEIGHT: 10'  
 AREA: 107.63 sq ft • PERIMETER: 41' 6 3/4"

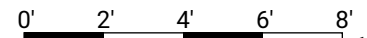


## ▼ Private Office Ground Floor

WIDTH: 12' 2 3/4" • LENGTH: 10' 1 1/2" • CEILING HEIGHT: 10'  
 AREA: 123.80 sq ft • PERIMETER: 44' 8 1/2"



THIS FLOOR PLAN IS PROVIDED WITHOUT WARRANTY OF ANY KIND. SENSOPIA DISCLAIMS ANY WARRANTY INCLUDING, WITHOUT LIMITATION, SATISFACTORY QUALITY OR ACCURACY OF DIMENSIONS.



1:58

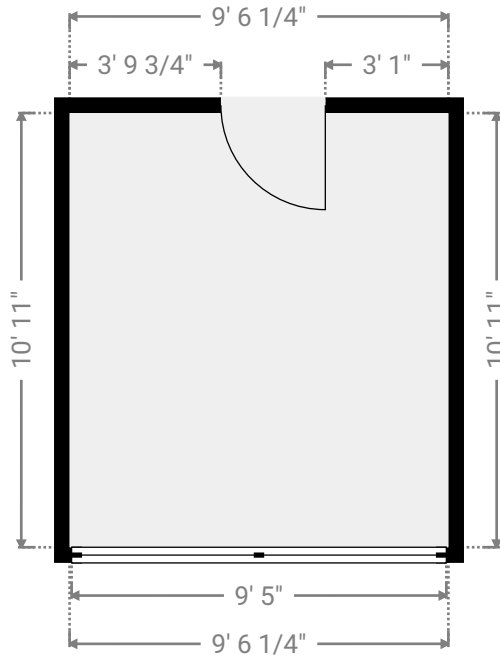
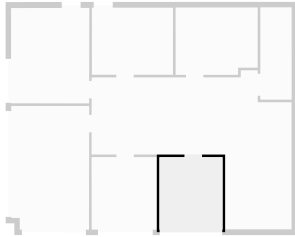
# A-208 Available Space

800 Oak Ridge Turnpike, 37830 Oak Ridge, Tennessee, US  
TOTAL AREA: 1540.37 sq ft • LIVING AREA: 1540.37 sq ft • FLOORS: 1 • ROOMS: 9



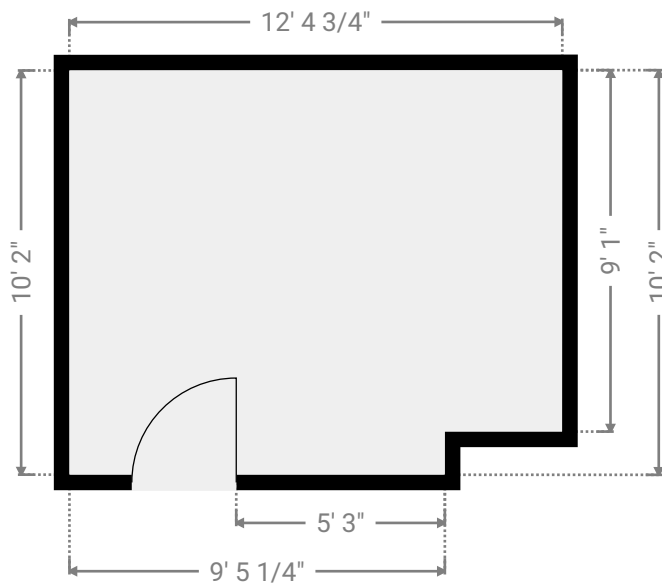
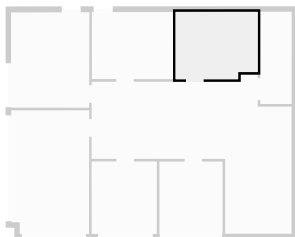
## ▼ Private Office Ground Floor

WIDTH: 9' 6 1/4" • LENGTH: 10' 11" • CEILING HEIGHT: 10'  
AREA: 103.92 sq ft • PERIMETER: 40' 10 1/2"



## ▼ Private Office Ground Floor

WIDTH: 12' 4 3/4" • LENGTH: 10' 2" • CEILING HEIGHT: 10'  
AREA: 122.72 sq ft • PERIMETER: 45' 1 1/4"



THIS FLOOR PLAN IS PROVIDED WITHOUT WARRANTY OF ANY KIND. SENSOPIA DISCLAIMS ANY WARRANTY INCLUDING, WITHOUT LIMITATION, SATISFACTORY QUALITY OR ACCURACY OF DIMENSIONS.



# A-208 Available Space

800 Oak Ridge Turnpike, 37830 Oak Ridge, Tennessee, US

TOTAL AREA: 1540.37 sq ft • LIVING AREA: 1540.37 sq ft • FLOORS: 1 • ROOMS: 9



## ▼ Server Room Ground Floor

WIDTH: 4' 8 3/4" • LENGTH: 13' 11 1/4" • CEILING HEIGHT: 10'  
AREA: 65.86 sq ft • PERIMETER: 37' 3 3/4"

