

WESTCHASE CORPORATE PARK

11201-11331 RICHMOND AVE



DAN MEYER

danmeyer@mcmmanagement.com

meyercarrington.com

O: 713-668-2369

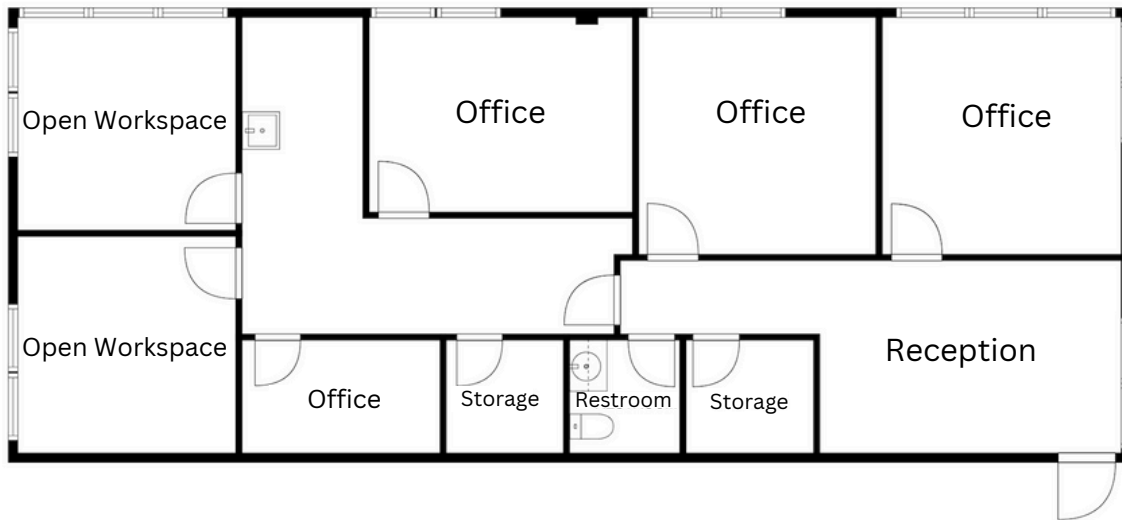
C: 713-806-8940

MEYER CARRINGTON



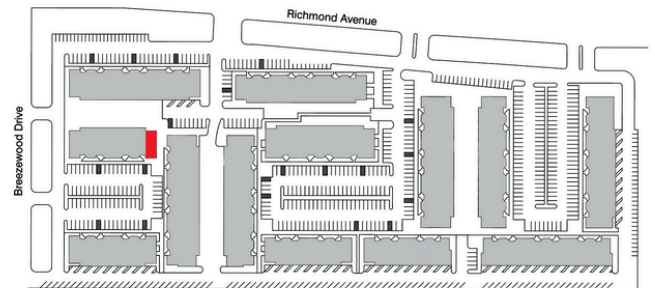
11311 RICHMOND AVE

SUITE L107
1,440 SF



Suite Layout

- 1,440 SF
- Tenant controlled HVAC
- 4 private offices plus open workspace
- Private Restroom
- Drive up access
- Conveniently located with direct access to Beltway 8 and Westpark Tollway



DAN MEYER

danmeyer@mcmanagement.com

meyercarrington.com

O: 713-668-2369

C: 713-806-8940

MEYER CARRINGTON