

25180 LAHSER ROAD
SOUTHFIELD, MICHIGAN



**SIGNATURE
ASSOCIATES**
KNOW SIGNATURE | KNOW RESULTS

OFFICE FOR SALE
9,288 Square Feet Available



PROPERTY FEATURES

- 9,288 square feet available
- Two-story office building
- Extra parking and excellent visibility
- Conference rooms, executive offices and open areas
- Fast access to I-696 and Northwestern Highway plus Telegraph Road and Southfield Freeway
- Excellent user purchase opportunity
- Sale Price: \$650,000 (\$69.98/sq. ft.)



For more information, please contact:

SCOTT ELLIOTT
(248) 948 4182
sellott@signatureassociates.com

CHRIS SECONTINE
(248) 799 3174
csecontine@signatureassociates.com

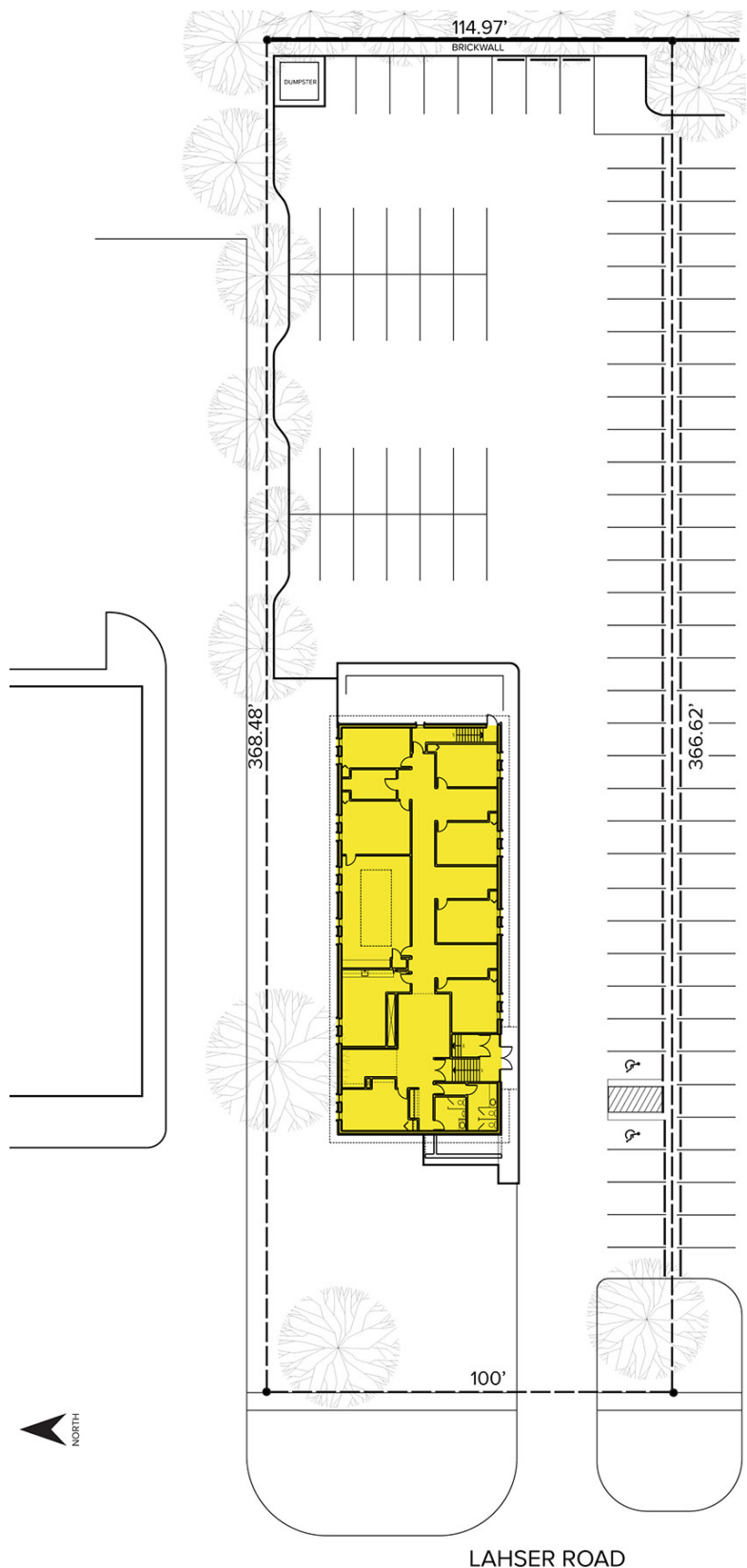
SIGNATURE ASSOCIATES
One Towne Square, Suite 1200
Southfield, MI 48076
www.signatureassociates.com

25180 Lahser Road – Southfield, Michigan

Office For Sale

9,288
Square Feet
AVAILABLE

Site Plan



For more information, please contact:
SCOTT ELLIOTT
(248) 948 4182
sellott@signatureassociates.com

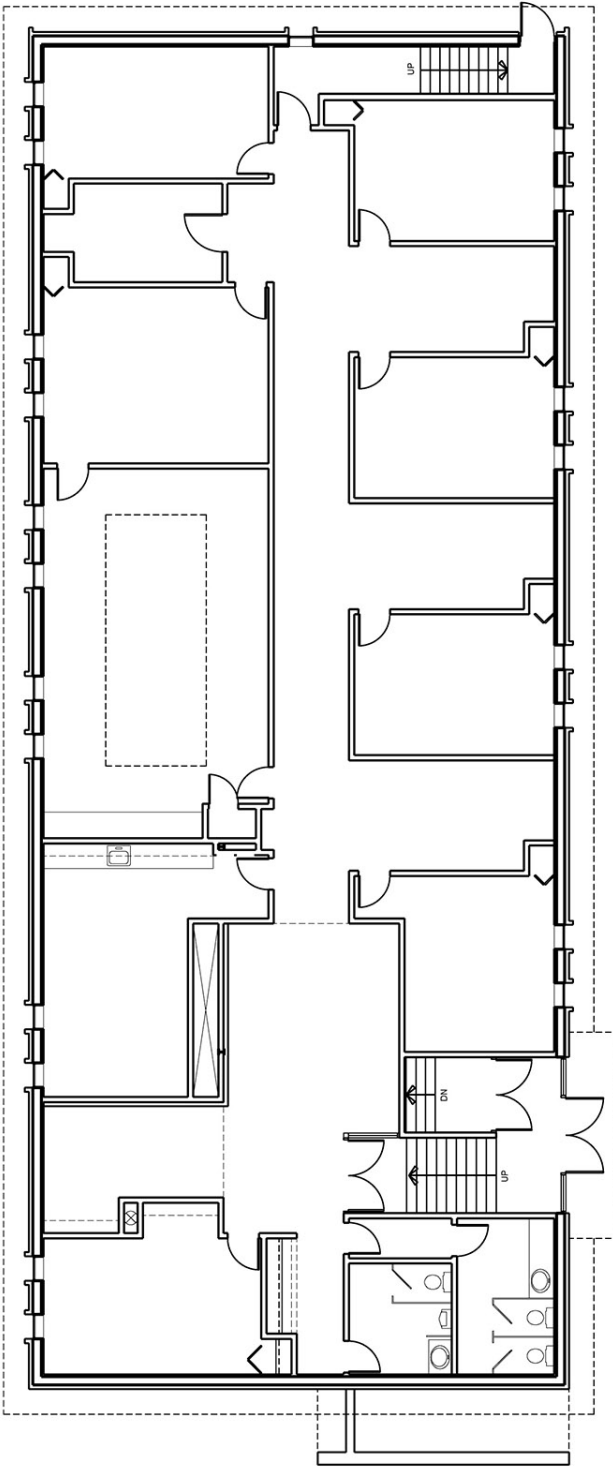
CHRIS SECONTINE
(248) 799 3174
csecontine@signatureassociates.com

SIGNATURE ASSOCIATES
One Towne Square, Suite 1200
Southfield, MI 48076
www.signatureassociates.com

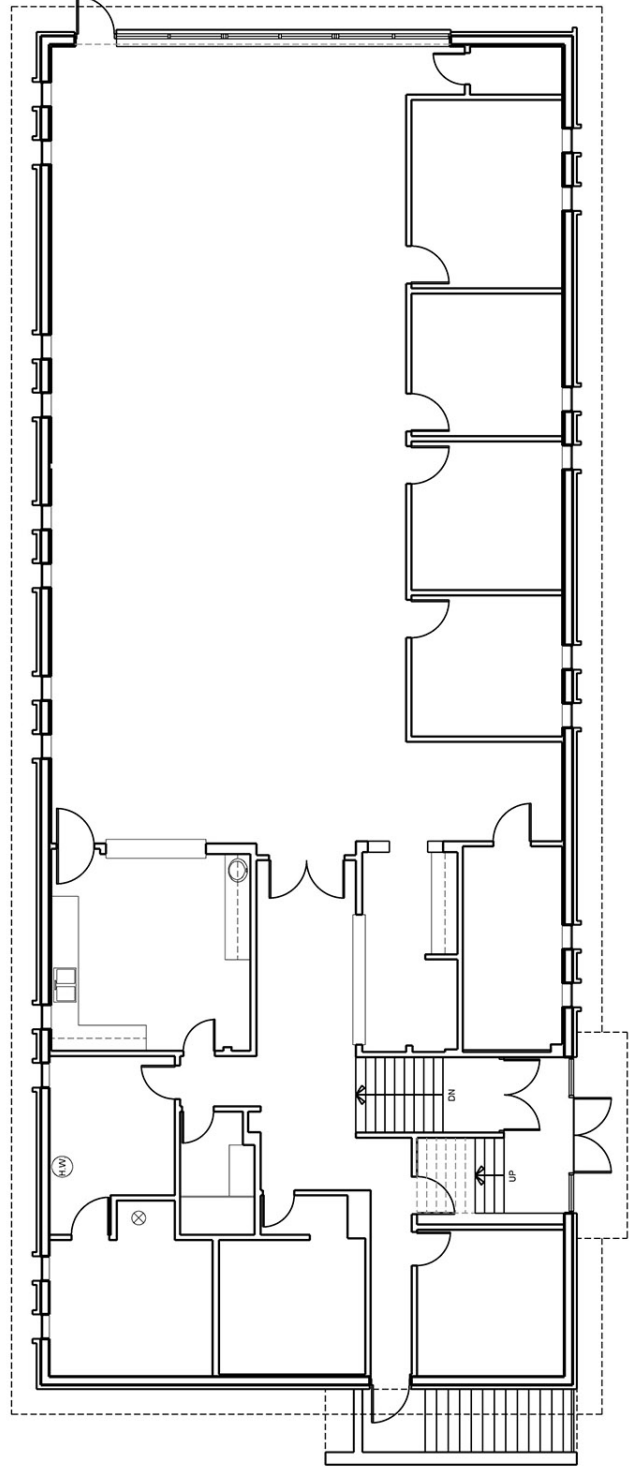
Information is subject to verification and no liability for errors or omissions is assumed. Price is subject to change and listing withdrawal.

Floor Plan

UPPER LEVEL



LOWER LEVEL



For more information, please contact:

SCOTT ELLIOTT
(248) 948 4182
sellott@signatureassociates.com

CHRIS SECONTINE
(248) 799 3174
csecontine@signatureassociates.com

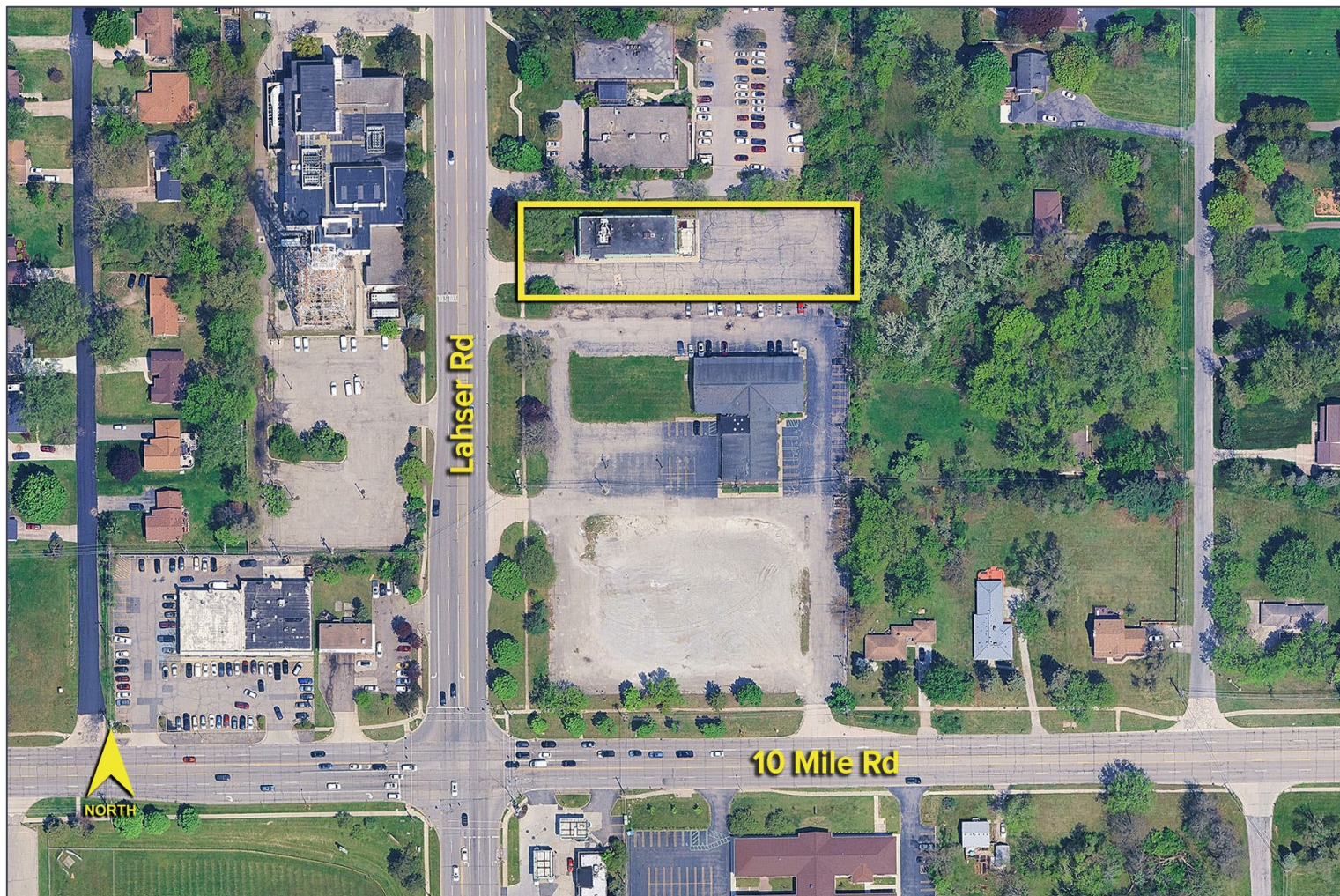
SIGNATURE ASSOCIATES
One Towne Square, Suite 1200
Southfield, MI 48076
www.signatureassociates.com

25180 Lahser Road – Southfield, Michigan

Office For Sale

9,288
Square Feet
AVAILABLE

Aerial



For more information, please contact:

SCOTT ELLIOTT
(248) 948 4182
sellott@signatureassociates.com

CHRIS SECONTINE
(248) 799 3174
csecontine@signatureassociates.com

SIGNATURE ASSOCIATES
One Towne Square, Suite 1200
Southfield, MI 48076
www.signatureassociates.com