

ALSIP PARK 294

ALSIP, IL

IMMEDIATELY AVAILABLE
FOR SALE OR LEASE
2 BUILDINGS

190,948 SF
(DIVISIBLE)

169,078 SF
(DIVISIBLE)



OWNED & DEVELOPED BY:



Brian Kling
+1 847 698 8223
brian.kling@colliers.com

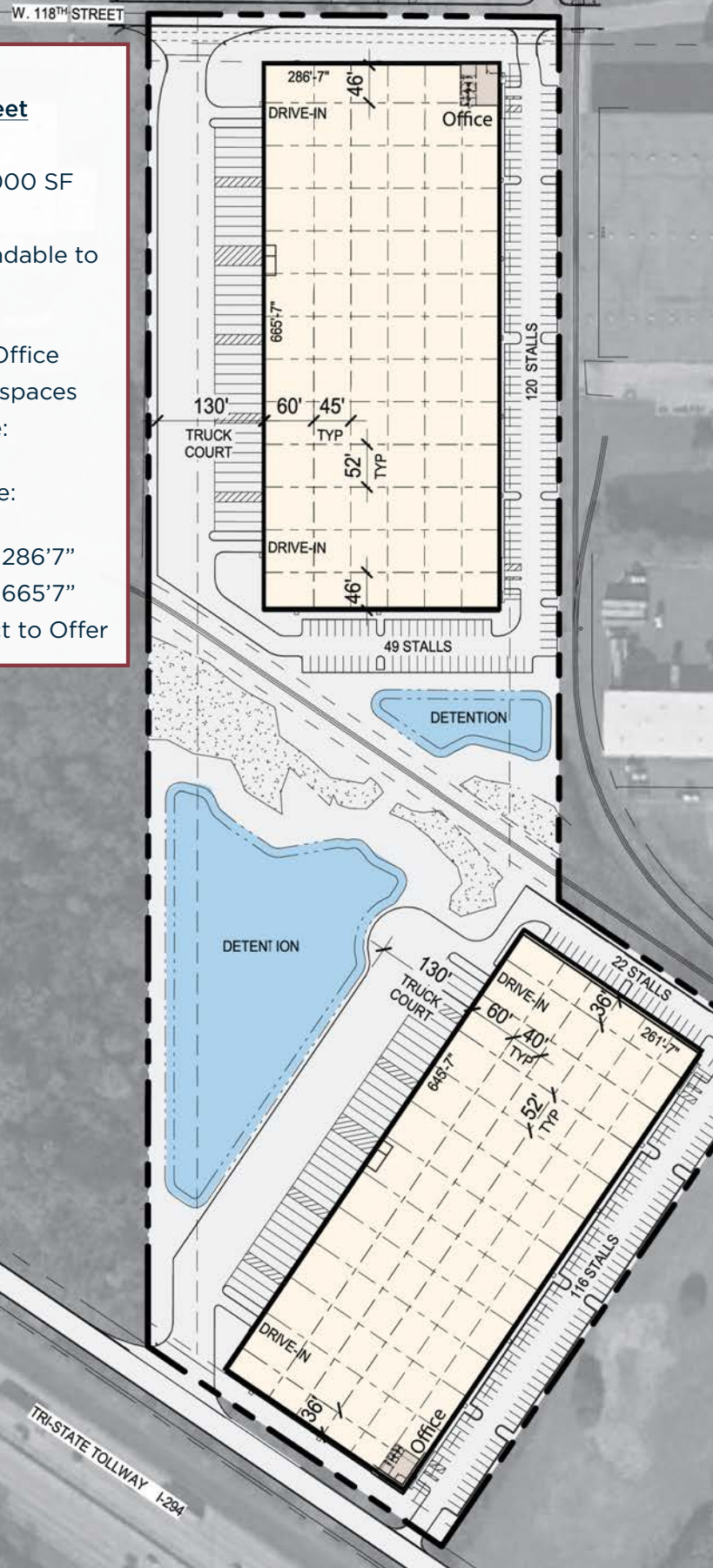
Jake Spinell
+1 847 698 8225
jake.spinell@colliers.com

SITE PLAN

BUILDING A,

5825 W 118th Street

- 190,948 SF
- Divisible to 50,000 SF
- 32' clear height
- 18 Docks (expandable to 34)
- 2 Drive-in doors
- 2,095 SF Spec Office
- 169 car parking spaces
- Typical Bay Size: 52' x 45'
- Staging Bay Size: 60' x 52'
- Building Depth: 286'7"
- Building Width: 665'7"
- For Sale: Subject to Offer



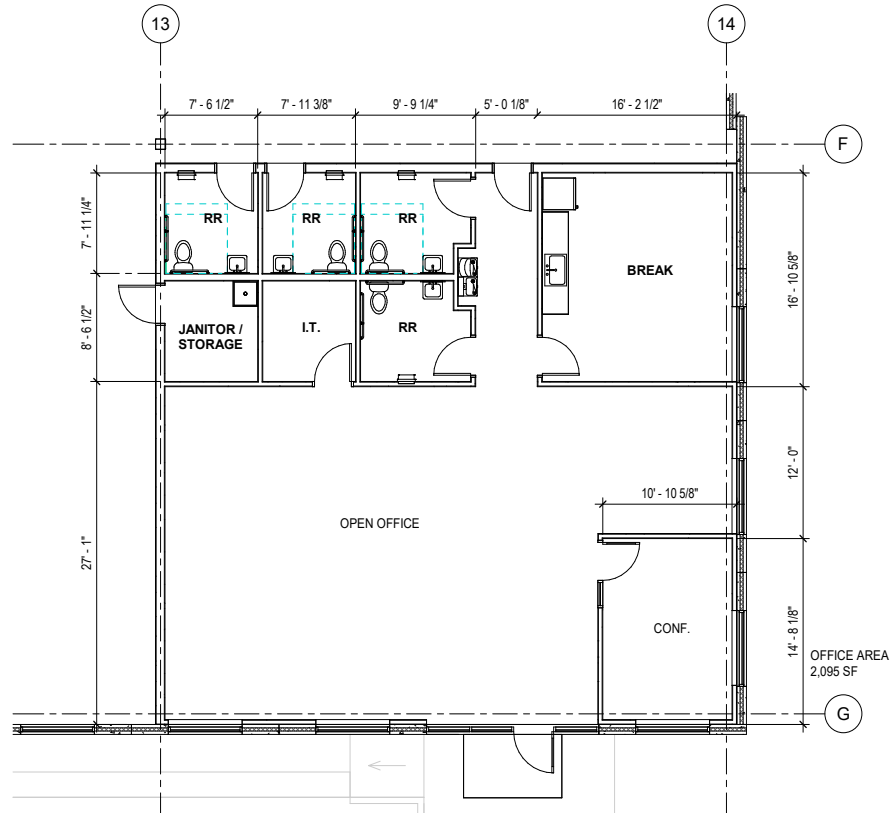
BUILDING B,

12201 S Griffith Center Rd

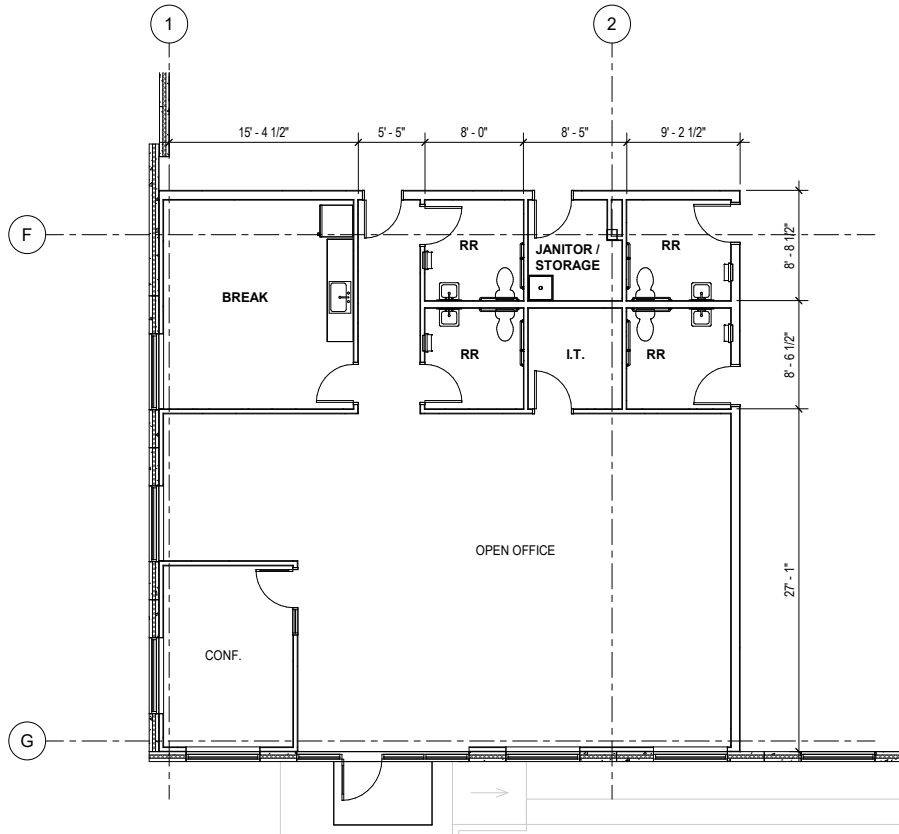
- 169,078 SF
- Divisible to 50,000 SF
- 32' clear height
- 18 Docks (expandable to 33)
- 2 Drive-in doors
- 2,095 SF Spec Office
- 138 car parking spaces
- Typical Bay Size: 52' x 40'
- Staging Bay Size: 60' x 52'
- Building Depth: 261'7"
- Building Width: 645'7"
- For Sale: Subject to Offer

OFFICE SITE PLAN

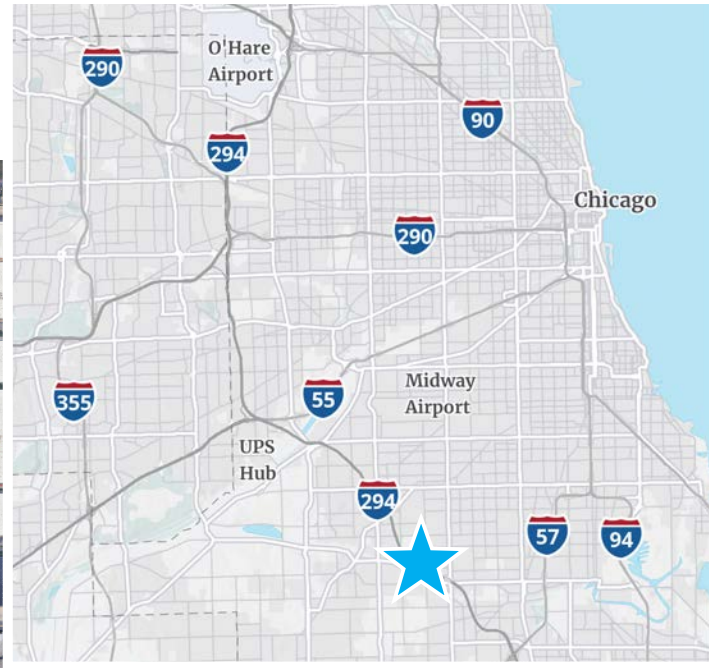
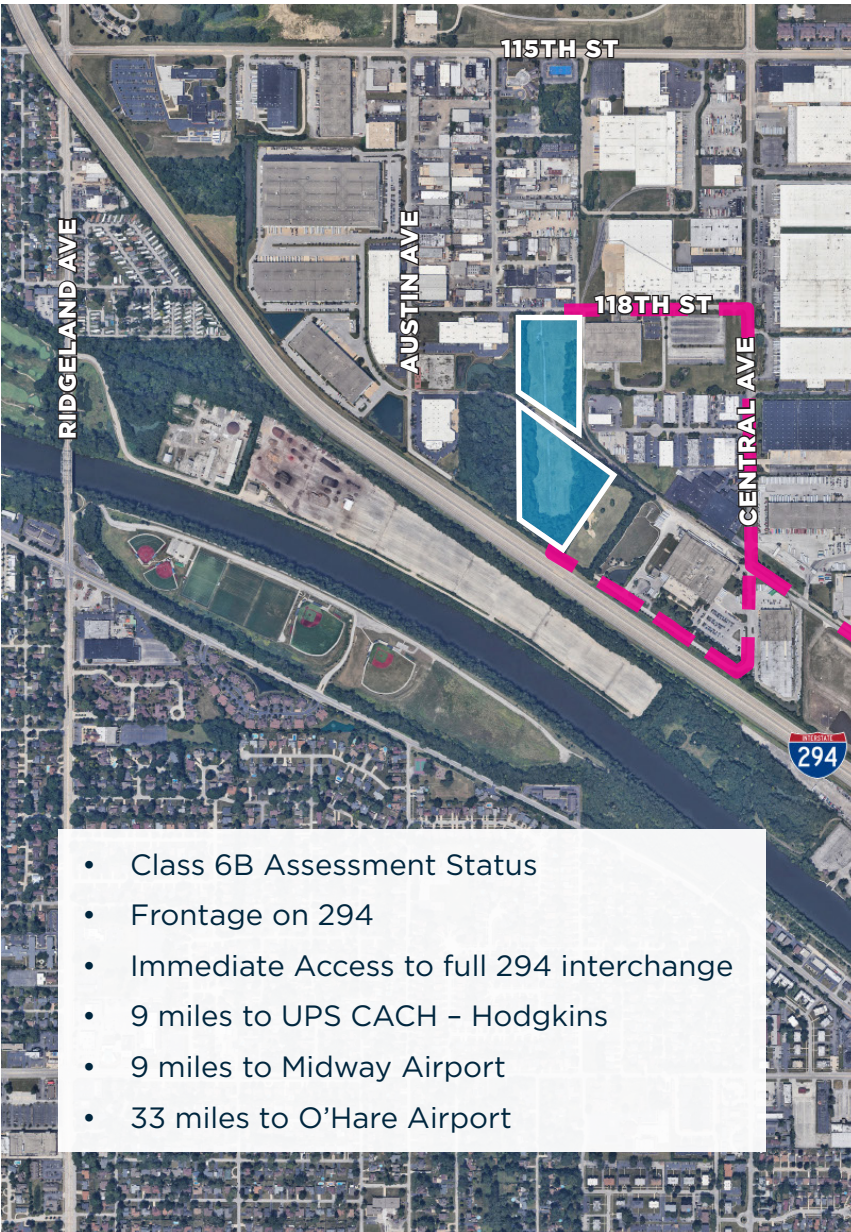
BUILDING A: 5825 W 118th Street



BUILDING B: 12201 S Griffith Center Rd



LOCATION OVERVIEW



- Class 6B Assessment Status
- Frontage on 294
- Immediate Access to full 294 interchange
- 9 miles to UPS CACH - Hodgkins
- 9 miles to Midway Airport
- 33 miles to O'Hare Airport

OWNED & DEVELOPED BY:



Brian Kling
+1 847 698 8223
brian.kling@colliers.com

Jake Spinell
+1 847 698 8225
jake.spinell@colliers.com

PHOTO GALLERY

