



SterlingCRE
ADVISORS

Light Filled Office Space for Lease

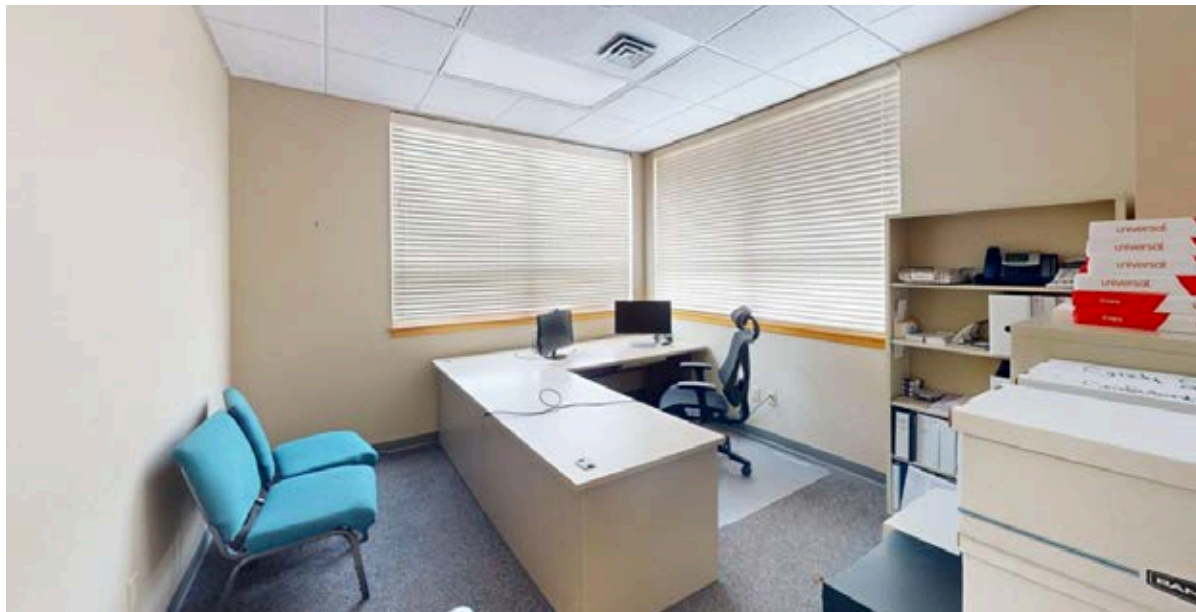
5463 Trumpeter Way
Missoula, Montana
±3,264 SF | Office

Exclusively listed by:
Matt Mellott, CCIM | SIOR
Matt@SterlingCREadvisors.com
406.203.3950

Opportunity Overview

Located at 5463 Trumpeter Way off Expressway, this ±3,200 SF office space offers quick access to I-90, the airport, and North Reserve Street, making it easy to reach from every part of Missoula. Ample street and lot parking keep it convenient for both staff and clients.

Zoned LU-MU, the space supports a wide range of uses and is configured to maximize functionality. Six private offices and an open bullpen workstation area all benefit from oversized windows that bring natural light throughout, giving the space a bright, open feel. A large conference room, kitchen and break area, and private restrooms round out the layout. The building is well-maintained and move-in ready.



| | |
|--------------------------|---------------------|
| Address | 5463 Trumpeter Way |
| Property Type | Office |
| Lease Rate | \$20.00/SF/YR + NNN |
| Estimated NNN | \$5.75/SF/YR |
| Total Square Feet | ± 3,264 Square Feet |

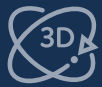
Interactive Links



[Link to Listing](#)



[Street View](#)

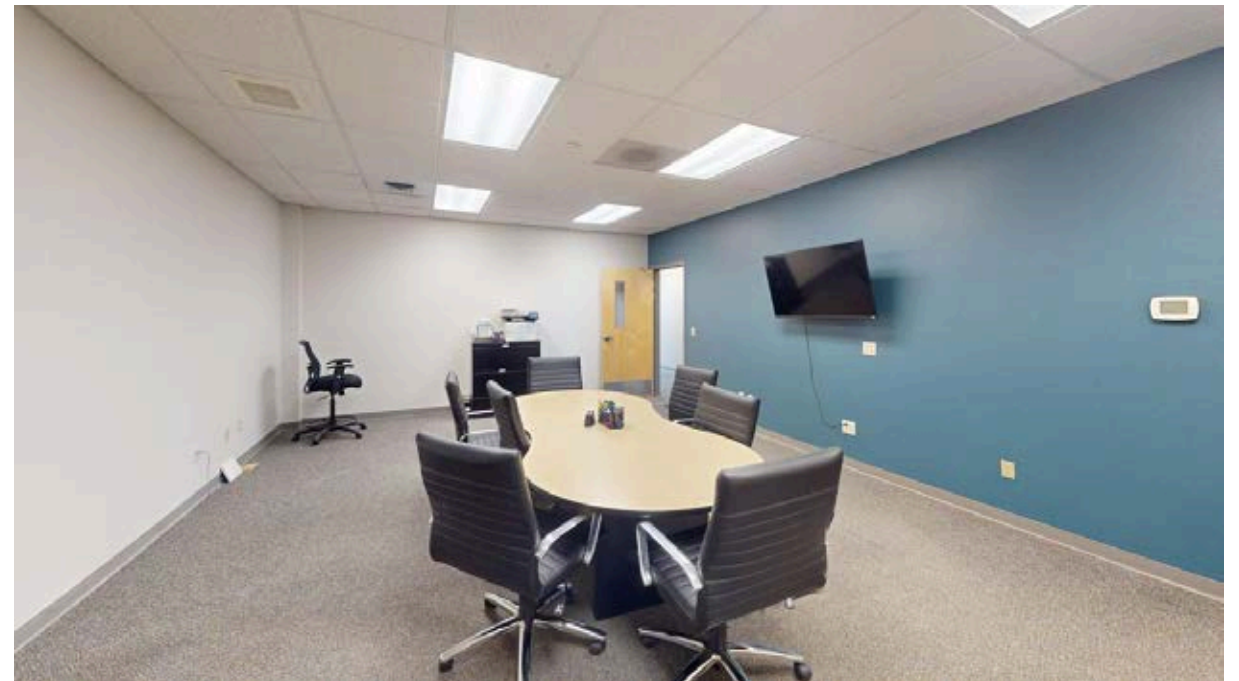


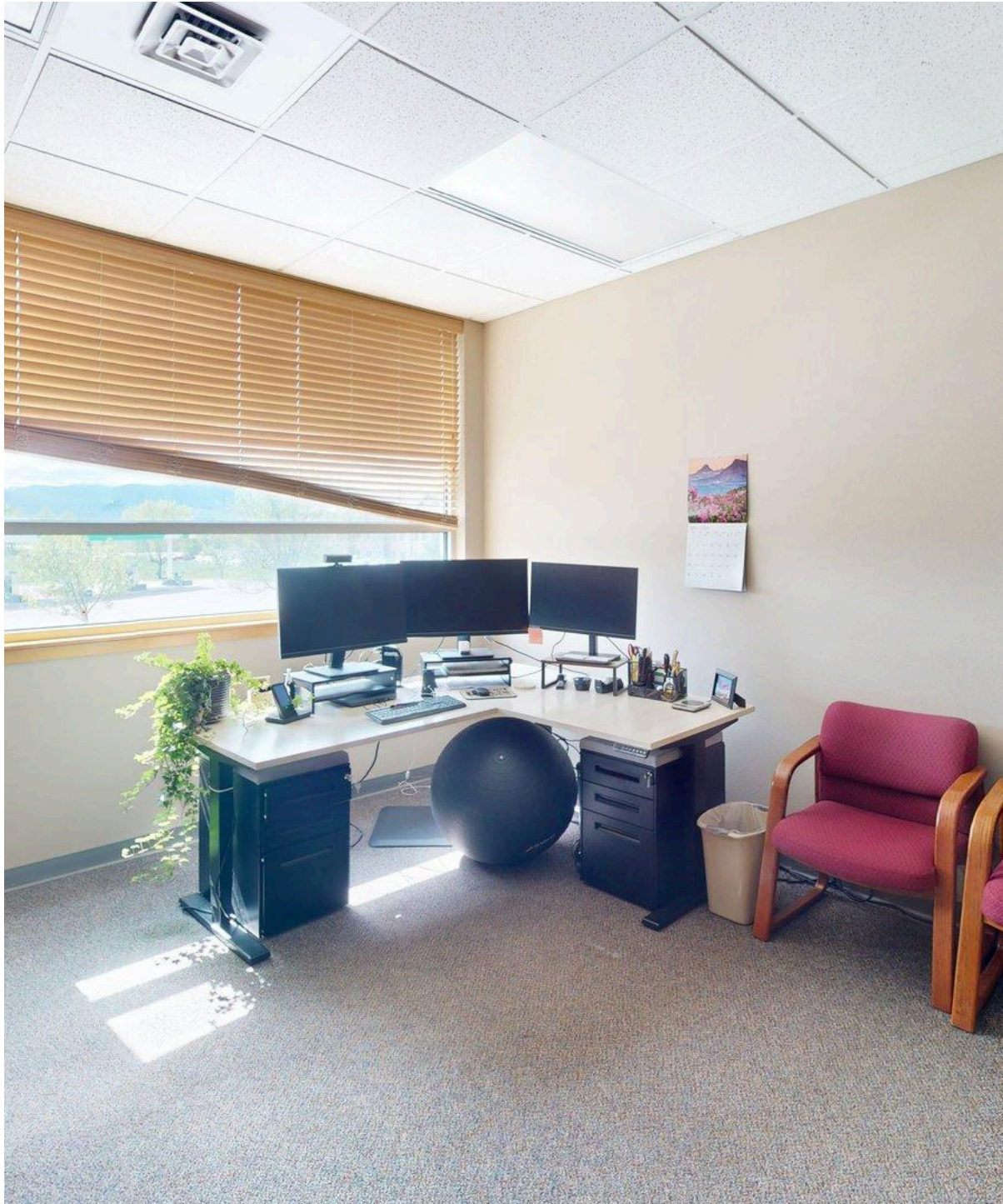
[3D Tour](#)



Property Details

| | |
|-----------------------------|---|
| Address | 5463 Trumpeter Way |
| Property Type | Office |
| Total Acreage | ±1.39 Acres |
| Services | City water & sewer |
| Access | Trumpeter Way |
| Zoning | LU-MU |
| Geocode | 04-2325-36-3-02-01-0000 |
| Private Office Count | 6 Offices 1 Bullpen Style Space 1 Conference Room Break Area |
| Year Built | 2007 |
| Parking | On site surface & street |





Close to North Reserve Street, I-90 and the Airport



Bright, light filled space- all offices & bullpen feature large windows



Permissive LU-MU zoning allows for a wide range of commercial uses



Ample on-site parking



Functional mix of offices, breakroom, private restrooms and open spaces

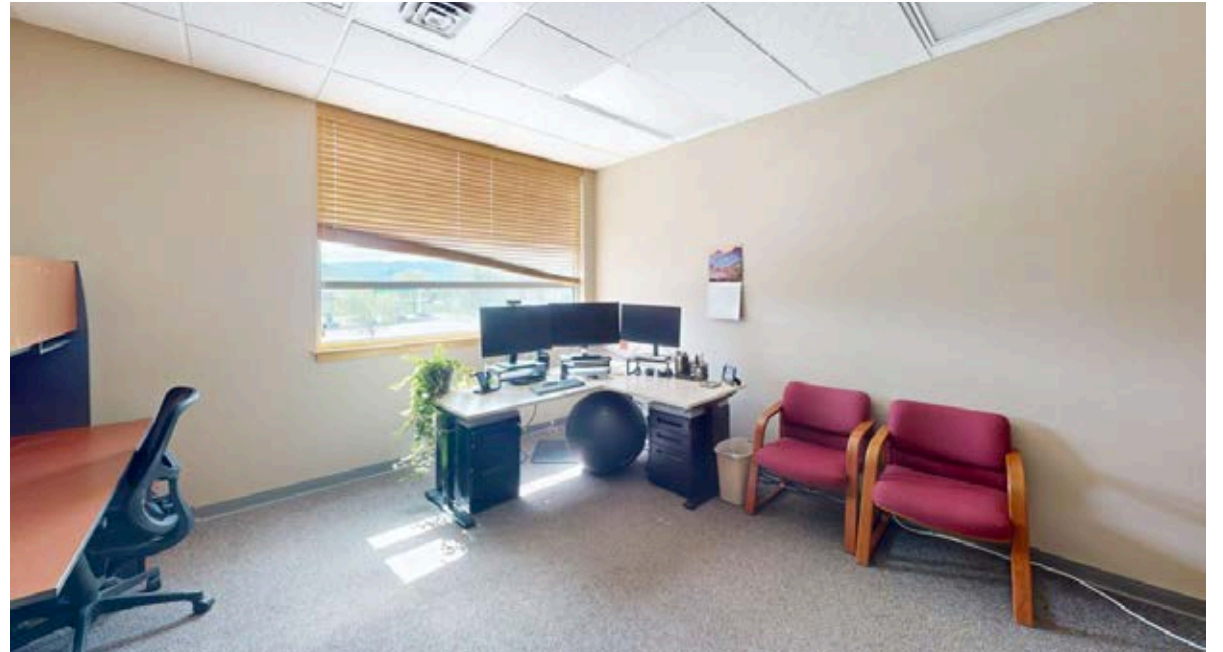
Conveniently Located Office Space for Lease

Located in near I-90 and the Missoula International Airport





Retailer Map

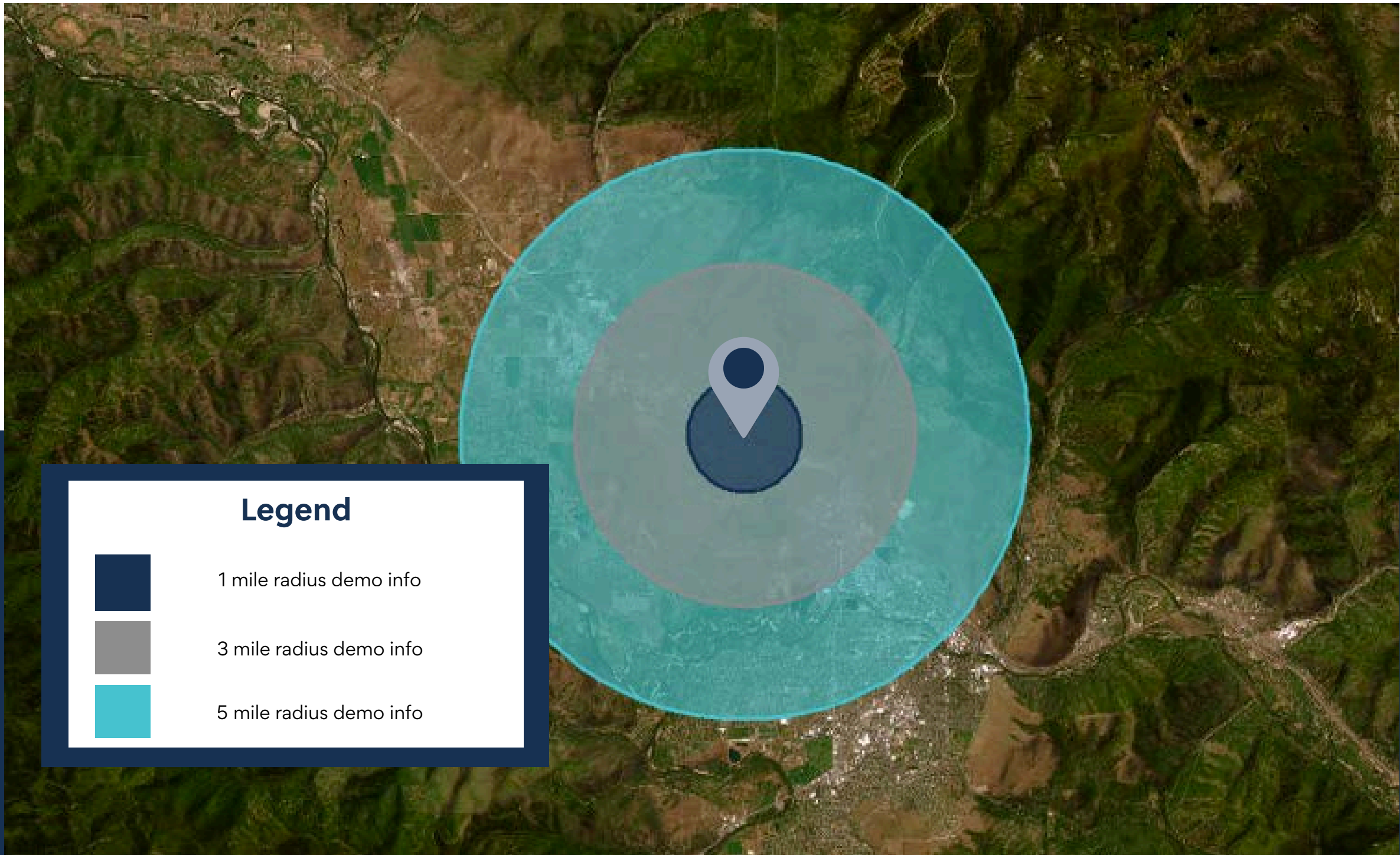






FLOOR 2

GROSS INTERNAL AREA



Legend



1 mile radius demo info



3 mile radius demo info



5 mile radius demo info

KEY FACTS

2,524

Population



2.5

Average Household Size

37.2

Median Age

\$109,693

Median Household Income

EDUCATION

5.2%

No High School Diploma



15.3%

High School Graduate



26.5%

Some College/
Associate's Degree



53.0%

Bachelor's/Grad/
Prof Degree

BUSINESS



163

Total Businesses



2,356

Total Employees

EMPLOYMENT



58.6%

White Collar



20.4%

Blue Collar



21.1%

Services

3.1%

Unemployment Rate

INCOME



\$109,693

Median Household Income



\$51,284

Per Capita Income



\$306,208

Median Net Worth

2025 Households by income (Esri)

The largest group: \$100,000 - \$149,999 (26.9%)

The smallest group: \$25,000 - \$34,999 (2.2%)

| Indicator ▲ | Value | Diff | |
|-----------------------|-------|-------|--|
| <\$15,000 | 6.9% | -1.8% | |
| \$15,000 - \$24,999 | 2.9% | -3.6% | |
| \$25,000 - \$34,999 | 2.2% | -5.3% | |
| \$35,000 - \$49,999 | 13.2% | +3.3% | |
| \$50,000 - \$74,999 | 7.5% | -7.8% | |
| \$75,000 - \$99,999 | 13.0% | -1.3% | |
| \$100,000 - \$149,999 | 26.9% | +8.3% | |
| \$150,000 - \$199,999 | 12.6% | +3.0% | |
| \$200,000+ | 14.7% | +5.2% | |

Missoula Air Service

Missoula International Airport offers **direct flights** to major cities on the west coast and midwest.

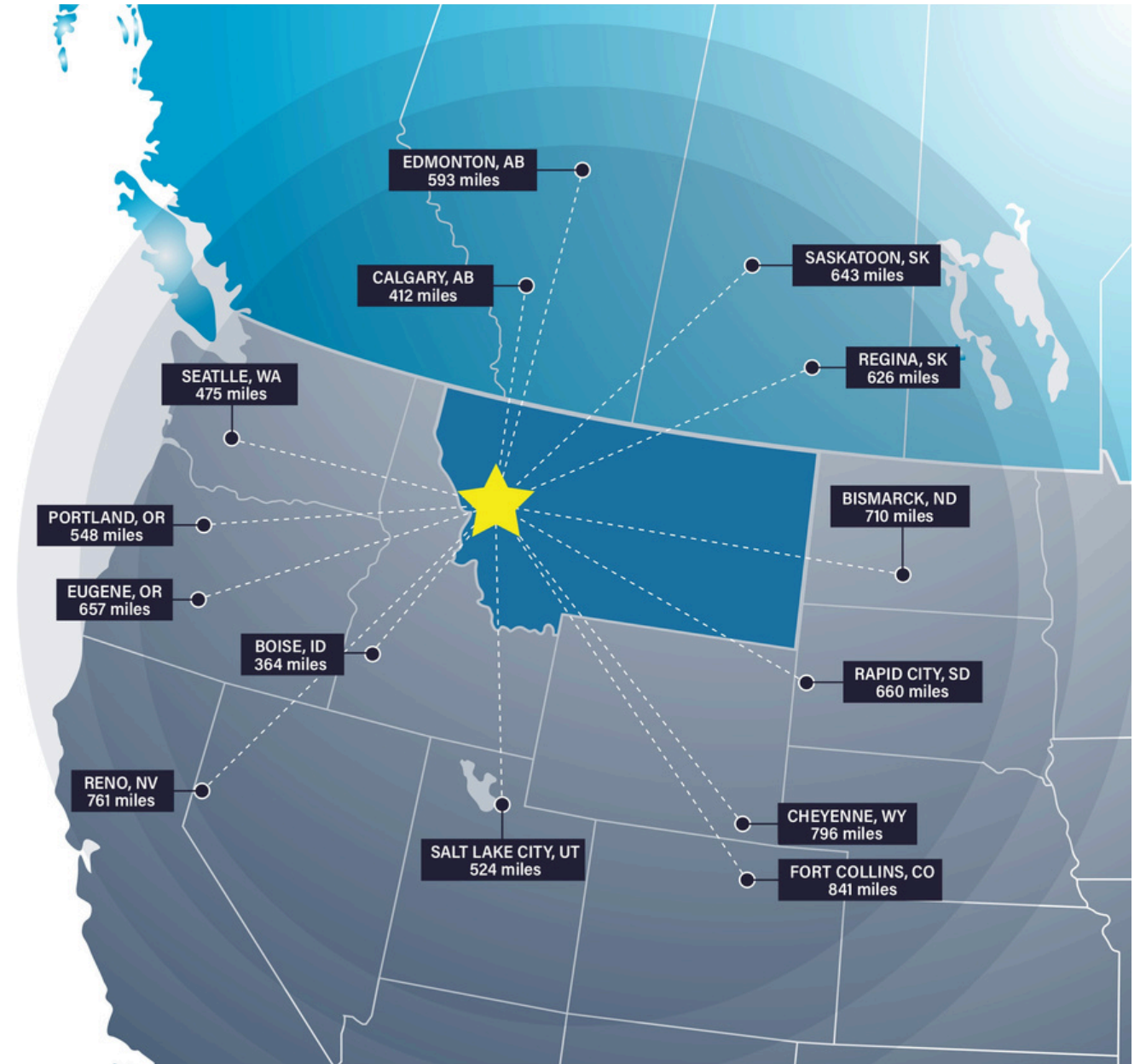


Missoula Access

Missoula offers strategic proximity to major cities in the Pacific Northwest, Midwest, and Canada.

Missoula is within a day's truck drive of cities across the Northwest, including major Canadian metros. Easy access to Interstate 90 and US Highway 93 means Montana's major cities including Billings, Bozeman, Butte, Helena, Great Falls, Kalispell and Missoula are within a half day's drive.

Access to rail and the Missoula International Airport round out the city's access to a multimodal transportation network.



Top Employers

University of Montana

2,500+ employees

Missoula County Public Schools

1,200+ employees

Providence St. Patrick Hospital

1000+ employees

BNSF Railway

300+ employees

Community Medical Center

1000+ employees

Missoula County

500+ employees

City of Missoula

500+ employees

Allegiance Benefits

500+ employees

Noteworthy



Source: Montana Department of Labor & Industry | lmi.mt.gov & Zippia | zippia.com



ACCOLADES

#2 Best Places to Live in the American West

Sunset Magazine

Top 10 Medium Cities for the Arts

2023 Southern Methodist University

University of Montana Top Tier R1 Designation

This designation, based on high research and innovation spending, held by only 3.7% of US Universities, attracts top-tier faculty and students

#9 Best Performing US City

The Milken Institute- Smaller Metros under 275,000 Residents

#4 Best Small Cities in America to Start a Business

Verizon Wireless

#10 Best Small Metros to Launch a Business

CNN Money

#6 Best Cities for Fishing

Rent.com

#1 City for Yoga

Apartment Guide

#1 Most Fun City for Young People

Smart Assets

PEOPLE

12.5% Population Growth - 2012-2022

Missoula ranks among highest net migration cities in US

Median Age 34 Years Old

The median age in the US is 39

58.8% Degreed

Associates degree or higher, 18.7% have a graduate level degree

24.7% High Income Households

Incomes over \$100,000 a year

53.4% Renters

Top 5 Occupations

Office & Admin Support, Food Service, Sales, Transportation

ACCESS

16 Minutes

Average Commute Time

15.6% Multimodal Commuters

Walk or bike to work

81 Hours Saved

81 hours saved in commute yearly over national average

14 Non-Stop Air Destinations

With a recently upgraded terminal at the Missoula International Airport

62 Miles

Of bike lanes with a Gold rating from the League of American Bicyclists

12 Routes

Provided by a bus network across the City of Missoula

11 EV Charge Stations

Available to the public across Missoula

ECONOMY

Designated as a Tech Hub

Western Montana was one of 30 applicants out of 200 designated as a Tech Hub by the federal government and now eligible for millions of dollars in funding for research in smart, autonomous and remote sensing technologies.

Diversity Among Top Employers

University of Montana (education), Providence Health Services/St. Patrick's Hospital (medical), Community Medical Center (medical), Montana Rail Link (transportation), Neptune Aviation (aviation services)

High Labor Participation

Missoula consistently offers one of the highest labor force participation rates in the country.

Expanding Industries

Missoula has seen major growth in construction, professional, scientific, and manufacturing businesses over the past decade.

Growing Number of Technology Companies

Cognizant, onX, Submittable, and Lumenad are some leading tech firms in Missoula



Brokerage Team



MATT MELLOTT, CCIM | SIOR
Commercial Real Estate Advisor

Matt delivers results for his clients through superior market knowledge, data analysis and effective negotiating. His areas of expertise include property income and expense analysis, cash flow valuations and lease structuring for office and multifamily investments.



JOE TREDIK
Leasing Specialist

Joe brings a personal understanding of the local market, its trends, and its unique opportunities to the Sterling Team. He leverages his accounting background and leasing experience to provide clients with detailed financial analysis and strategic insights that enable clients to make well informed leasing decisions.



DEAN WILSON
Commercial Real Estate Advisor

Dean Wilson is a Marine Corps veteran who brings operational discipline and a sharp eye for process and follow-through to his role as a Brokerage Advisory Associate at SterlingCRE Advisors. He holds a background in complex, multi-phase project coordination and stakeholder communication across high-stakes environments.



SIERRA PIERCE
Transaction Coordinator

Sierra has a sharp eye for detail with a background in client service and project coordination. With experience in marketing, small business ownership, and healthcare administration, Sierra has spent her career managing logistics, building strong relationships, and ensuring no task falls through the cracks.

Disclaimer

CONFIDENTIALITY & DISCLAIMER All materials and information received or derived from SterlingCRE Advisors its directors, officers, agents, advisors, affiliates, and/or any third party sources are provided without representation or warranty as to completeness, veracity, or accuracy, condition of the property, compliance or lack of compliance with applicable governmental requirements, developability or suitability, the financial performance of the property, the projected financial performance of the property for any party's intended use or any and all other matters. Neither SterlingCRE Advisors its directors, officers, agents, advisors, or affiliates makes any representation or warranty, express or implied, as to accuracy or completeness of any materials or information provided, derived, or received. Materials and information from any source, whether written or verbal, that may be furnished for review are not a substitute for a party's active conduct of its own due diligence to determine these and other matters of significance to such party. SterlingCRE Advisors will not investigate or verify any such matters or conduct due diligence for a party unless otherwise agreed in writing. EACH PARTY SHALL CONDUCT ITS OWN INDEPENDENT INVESTIGATION AND DUE DILIGENCE. Any party contemplating or under contract or in escrow for a transaction is urged to verify all information and to conduct their own inspections and investigations including through appropriate third-party independent professionals selected by such party. All financial data should be verified by the party including by obtaining and reading applicable documents and reports and consulting appropriate independent professionals. SterlingCRE Advisors makes no warranties and/or representations regarding the veracity, completeness, or relevance of any financial data or assumptions. SterlingCRE Advisors does not serve as a financial advisor to any party regarding any proposed transaction. All data and assumptions regarding financial performance, including that used for financial modeling purposes, may differ from actual data or performance. Any estimates of market rents and/or projected rents that may be provided to a party do not necessarily mean that rents can be established at or increased to that level. Parties must evaluate any applicable contractual and governmental limitations as well as market conditions, vacancy factors, and other issues in order to determine rents from or for the property. Legal questions should be discussed by the party with an attorney. Tax questions should be discussed by the party with a certified public accountant or tax attorney. Title questions should be discussed by the party with a title officer or attorney. Questions regarding the condition of the property and whether the property complies with applicable governmental requirements should be discussed by the party with appropriate engineers, architects, contractors, other consultants, and governmental agencies. All properties and services are marketed by SterlingCRE Advisors in compliance with all applicable fair housing and equal opportunity laws.