

10203 Santa Monica Boulevard

FOR LEASE
Unique opportunity
Prime Century City

**GIFT CERTIFICATES TO BROKERS
WHO STOP BY HANK'S CAFE FOR
BREAKFAST OR LUNCH**



CLICK OR SCAN
FOR PROPERTY
WALKTHROUGH

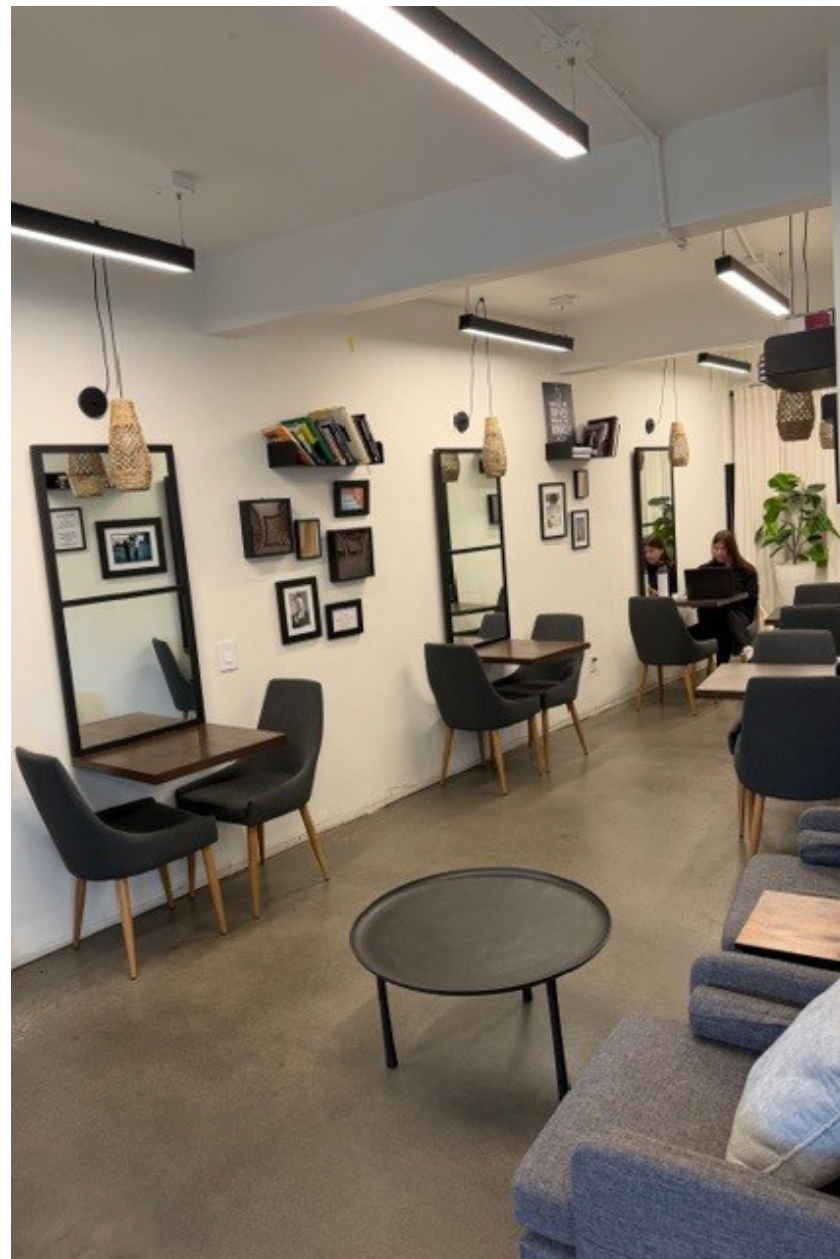
WESTMAC
Commercial Brokerage Company

Fully Creative Stand Alone Building

AVAILABLE SPACE	± 5,950 RSF, Highly efficient
LEASE RATE	\$4.95 FSG
PARKING	2.5/1,000 at \$175/Month
AVAILABLE	4th floor of the 5 Story building
EXTRA FEATURE	Hank's gourmet coffee bar and café, featuring specialty teas & brews , sandwiches, salads, desserts with extensive seating areas for intimate gatherings
BUILDING HIGHLIGHTS	<ul style="list-style-type: none">• Vaulted Ceilings with Open highly creative/Tech buildout• Extensive use of glass a with wrap around unobstructed country club views facing West, North and East with private patio and openable windows.• Newly constructed• 8 window offices ,conference room, open kitchen / coffee bar, telephone rooms, and open seating• Located on the Corner of Santa Monica at Club view Drive• Access to rooftop clubhouse and roof deck



FLOOR PLAN



Property Images



Property Images



AREA MAP

THE PENINSULA

WALDORF ASTORIA
HOTELS & RESORTS



EQUINOX



EATALY
altri cibi

HYATT

hinoki & the bird

CARMINE'S
ESTABLISHED
1990

Westfield





**STOP BY FOR YOUR GIFT CERTIFICATE
FOR BREAKFAST OR LUNCH**

WILLA MCNAMARRA FIELDS

Executive Vice President

mcnamarra@westmac.com

310.966.4358, direct

310.701.1761, cell

DRE# 00630796

COLIN FIELDS

Associate

fields@westmac.com

310.966.4357, direct

DRE# 02129222