

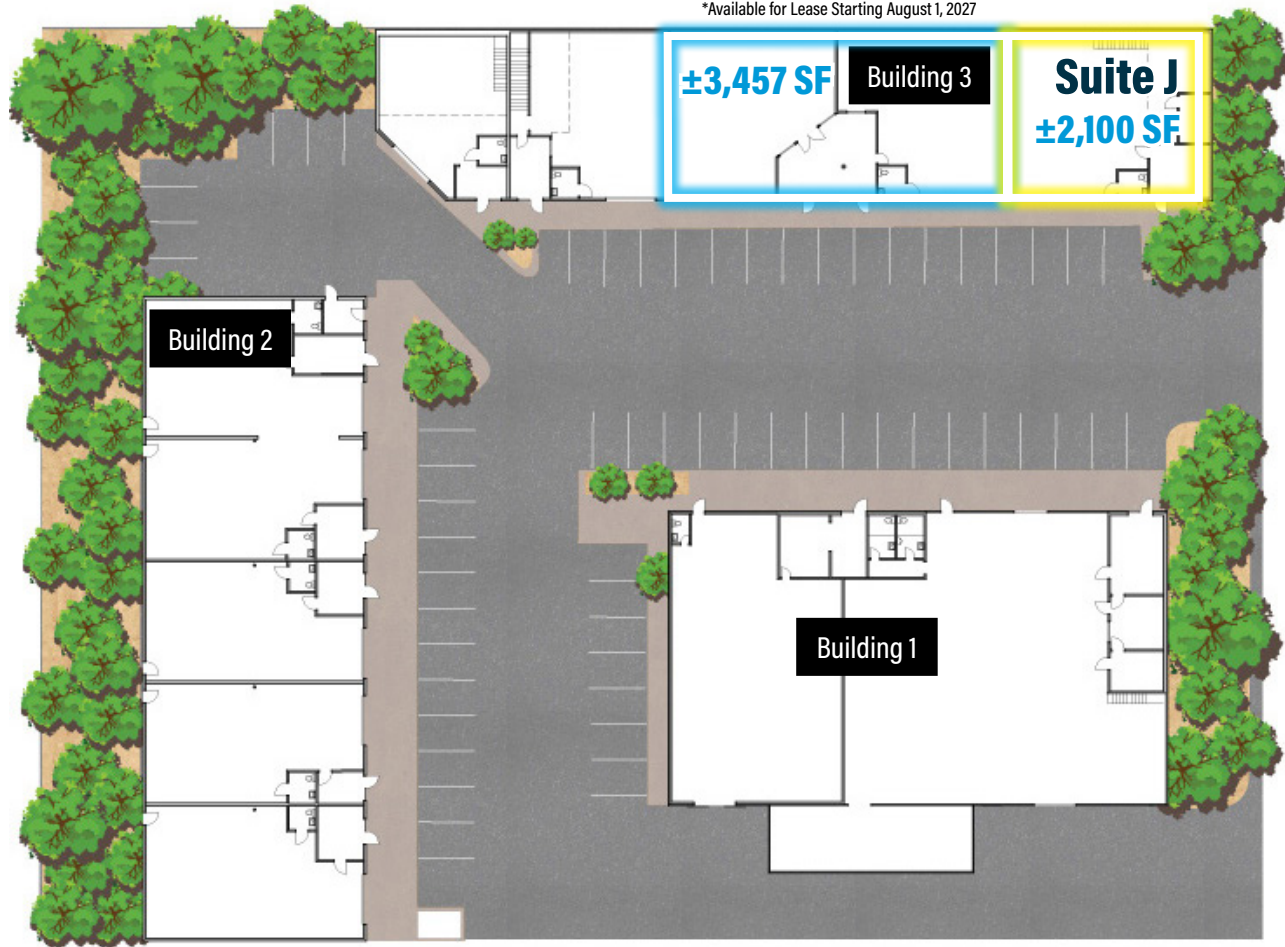
WAREHOUSE SUITES FOR LEASE: ±2,100 SF TO 3,457 SF

1991 DON LEE PLACE, ESCONDIDO, CA 92029



Christian Thompson
(760) 481-1016
cthompson@lee-associates.com
DRE# 02105771

Trent France
(760) 929-7838
tfrance@lee-associates.com
DRE# 00984842



**±2,100 SF to 3,457 SF
Available For Lease**



Warehouse with Grade-Level Loading



Office/Restroom/Warehouse



20' Clear Height



±90% Functional Warehouse Layouts



Lease Rate: \$1.45/SF + \$0.42 NNN

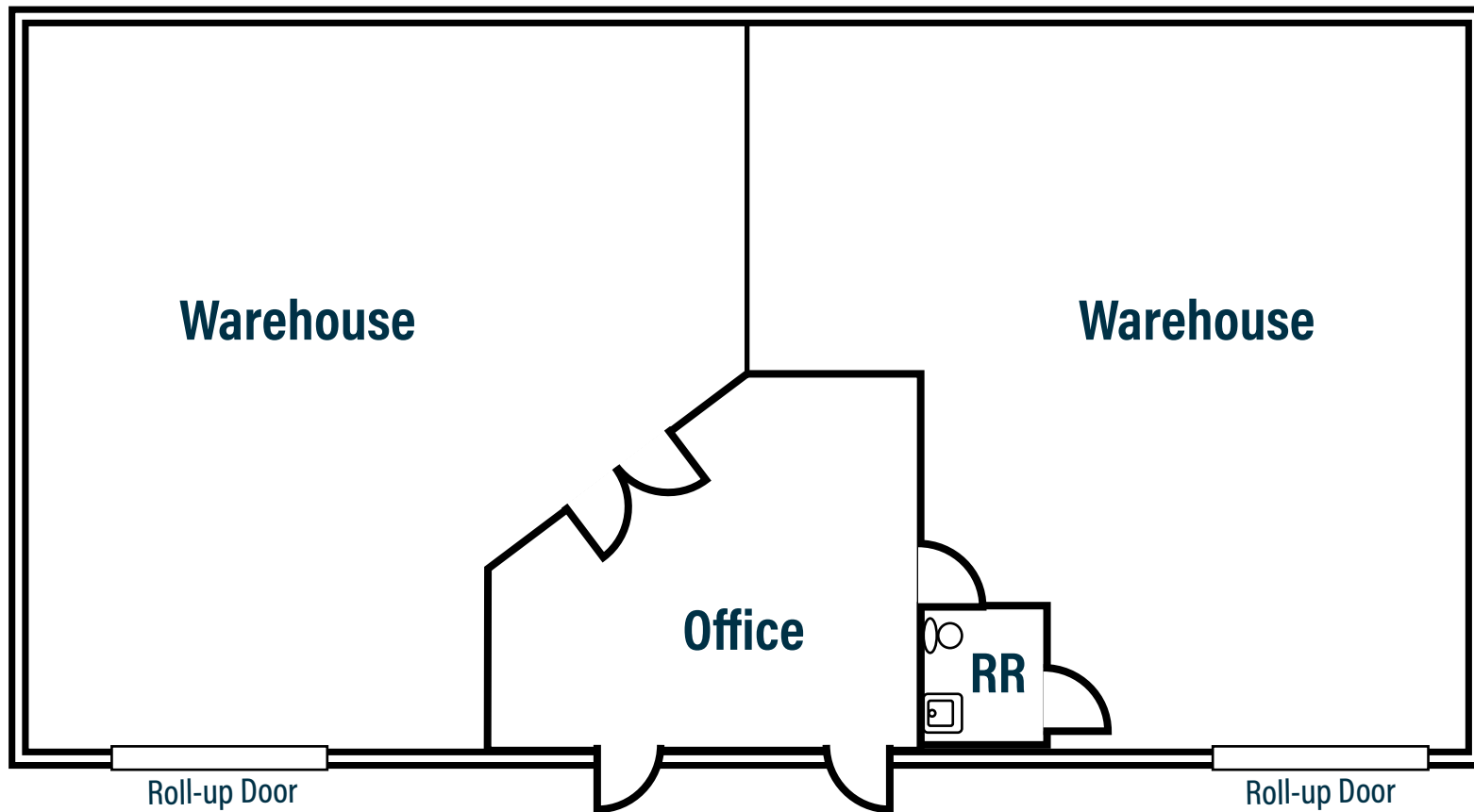
Floor Plan

±3,457 SF

*Available for lease starting August 1, 2027



Lease Rate: \$1.45/SF + \$0.42 NNN

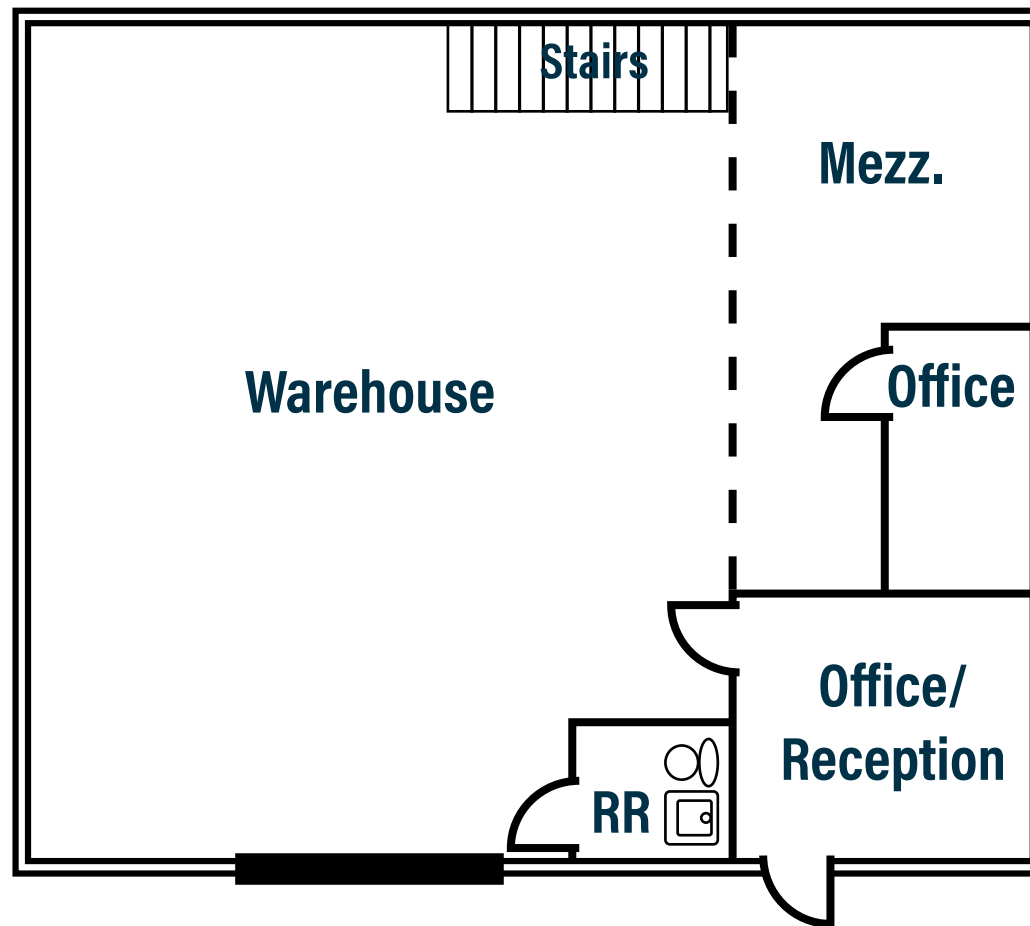


Floor Plan

Suite J ±2,100 SF



Lease Rate: \$1.45/SF + \$0.42 NNN



ESCONDIDO

ESCONDIDO, CALIFORNIA, nestled in the heart of San Diego County, is a vibrant city known for its unique blend of natural beauty and industrial prowess. The city's landscape is marked by a harmonious coexistence of industrial buildings and picturesque surroundings. With a diverse range of manufacturing and industrial facilities, Escondido plays a crucial role in Southern California's economy. Its industrial sector is driven by a diverse range of businesses, including electronics, aerospace, and food production. The city's strategic location, with easy access to major transportation routes and the bustling San Diego metropolitan area, makes it an attractive hub for industrial enterprises. These businesses contribute significantly to the local economy, providing employment opportunities and fostering economic growth.

Escondido's economy isn't solely defined by its industrial landscape; it also benefits from a burgeoning tourism sector. The city's appealing mix of cultural attractions, recreational opportunities, and a rich agricultural heritage draws visitors from near and far. The iconic San Diego Zoo Safari Park, vineyards, and historic downtown district offer an array of experiences that boost the local economy through tourism-related businesses, including hotels, restaurants, and entertainment venues. This diversification of the economy, with both industrial and tourism sectors, allows Escondido to maintain a robust and resilient economic foundation, ensuring the city's continued growth and prosperity.



150,627
POPULATION

\$94,534
AVERAGE HH INCOME

34.9
AVERAGE AGE

5,781
TOTAL BUSINESSES

54,550
TOTAL EMPLOYEES

1991 DON LEE PLACE, ESCONDIDO, CA 92029

Christian Thompson

(760) 481-1016

cthompson@lee-associates.com

DRE# 02105771

Trent France

(760) 929-7838

tfrance@lee-associates.com

DRE# 00984842

No warranty or representation is made to the accuracy of the foregoing information. Terms of sale or lease and availability are subject to change or withdrawal without notice.