

**FOR  
LEASE**

## Bellevue Retail Space Available

10901-10915 SE US-441  
Bellevue, FL 34420



### Property Highlights

- 10,000 SF Multi-Tenant Retail Space
- 1,000 – 1,500 sq ft suites available, with up to 4,000 sq ft of contiguous space)
- Under New Ownership & Recently Renovated (Q4 2025)
- Approximately 35,000 vehicles drive by daily
- 1.32 Acres with Ample Parking Zoned B4 (Commercial)
- 250 feet of Frontage on US-441
- Located in Bellevue, between the Villages & Ocala
- Close to Shopping and Restaurants
- New HVAC units per suite (*Tenant Controlled*)
- Monument and Signature Building Signage Available
- 5 Year Lease Minimum Lease Term
- Lease Rates Stating at \$24.00 NNN + \$5.84 per sf (OPEX)

### **CONTACT**

David Brim

412-445-8960 *mobile*

David@ResultsREpartners.com

### **Results Real Estate Partners, LLC**

*Licensed Commercial Real Estate Brokers*

365 International Parkway  
Lake Mary, Florida 32746

407.647.0200 *main*

407.647.0205 *fax*

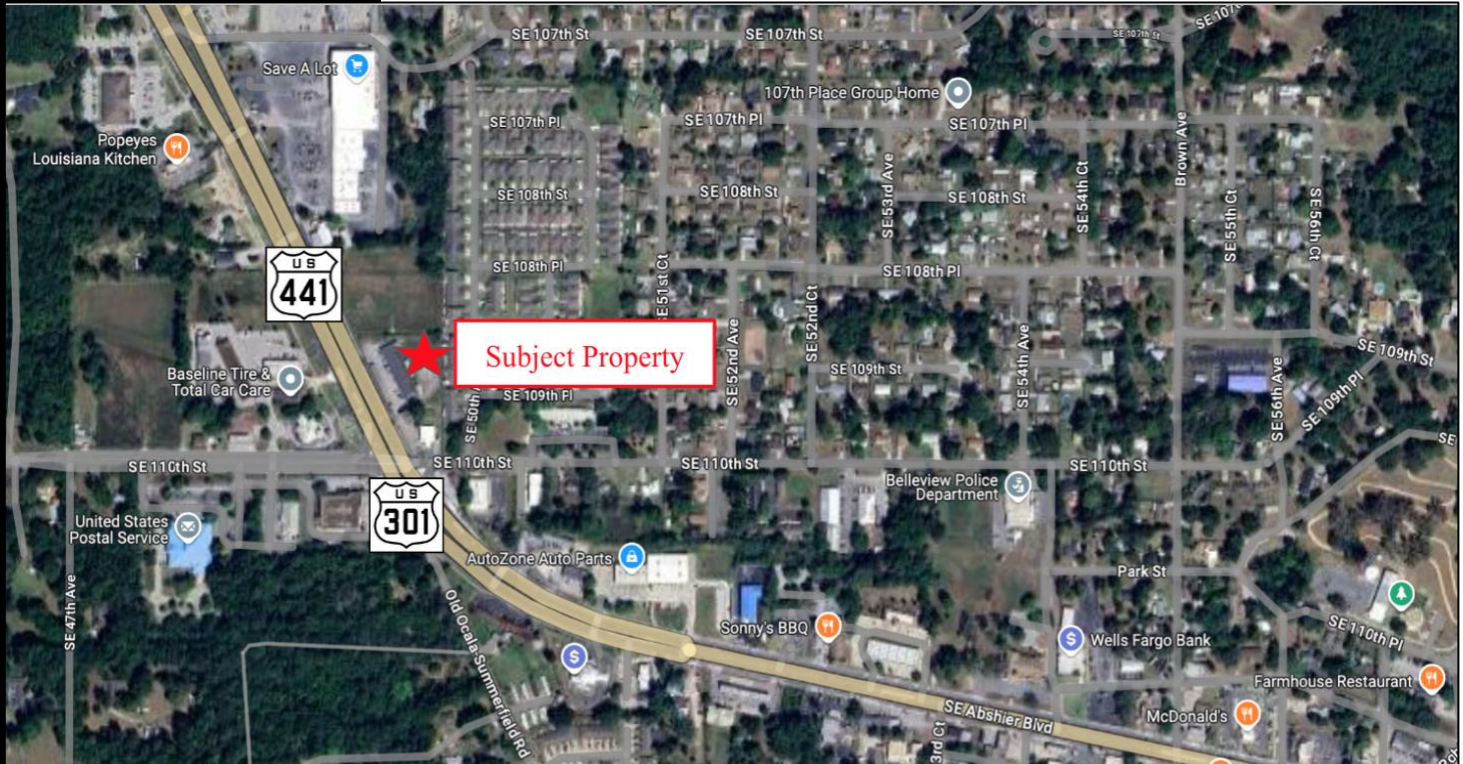
[www.ResultsREpartners.com](http://www.ResultsREpartners.com)

This information is from sources we deem reliable and is subject to prior sale, lease, withdrawal without notice, or change in prices, rates, or conditions. No representation is made as to the accuracy of any information furnished.

**FOR  
LEASE**

**Bellevue Retail Space Available**

10901-10915 SE US-441  
Bellevue, FL 34420



**CONTACT**

David Brim  
412-445-8960 *mobile*  
David@ResultsREpartners.com

**Results Real Estate Partners, LLC**  
*Licensed Commercial Real Estate Brokers*  
365 International Parkway.  
Lake Mary, Florida 32746

407.647.0200 *main*  
407.647.0205 *fax*

[www.ResultsREPartners.com](http://www.ResultsREPartners.com)

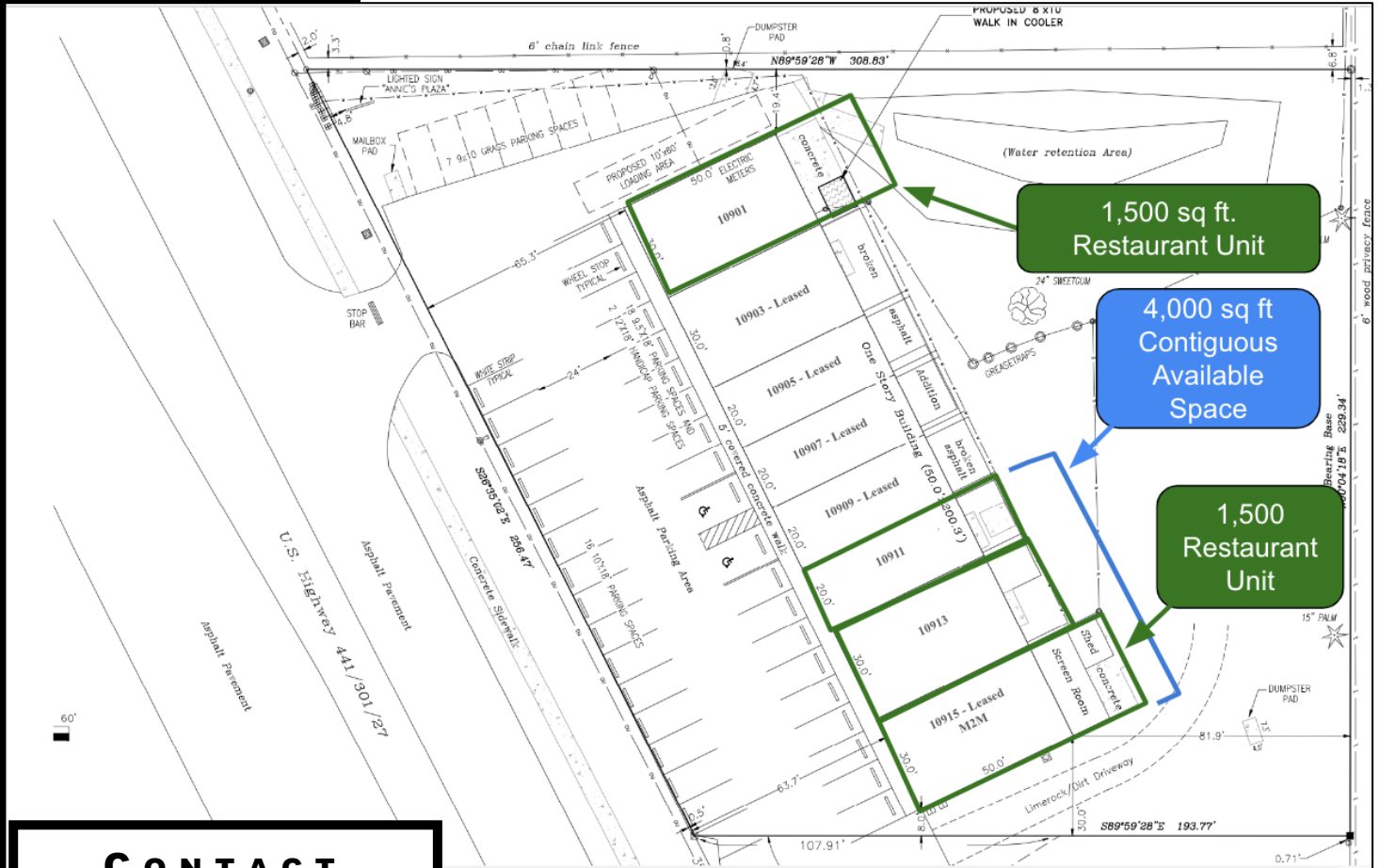


This information is from sources we deem reliable and is subject to prior sale, lease, withdrawal without notice, or change in prices, rates, or conditions. No representation is made as to the accuracy of any information furnished.

# FOR LEASE

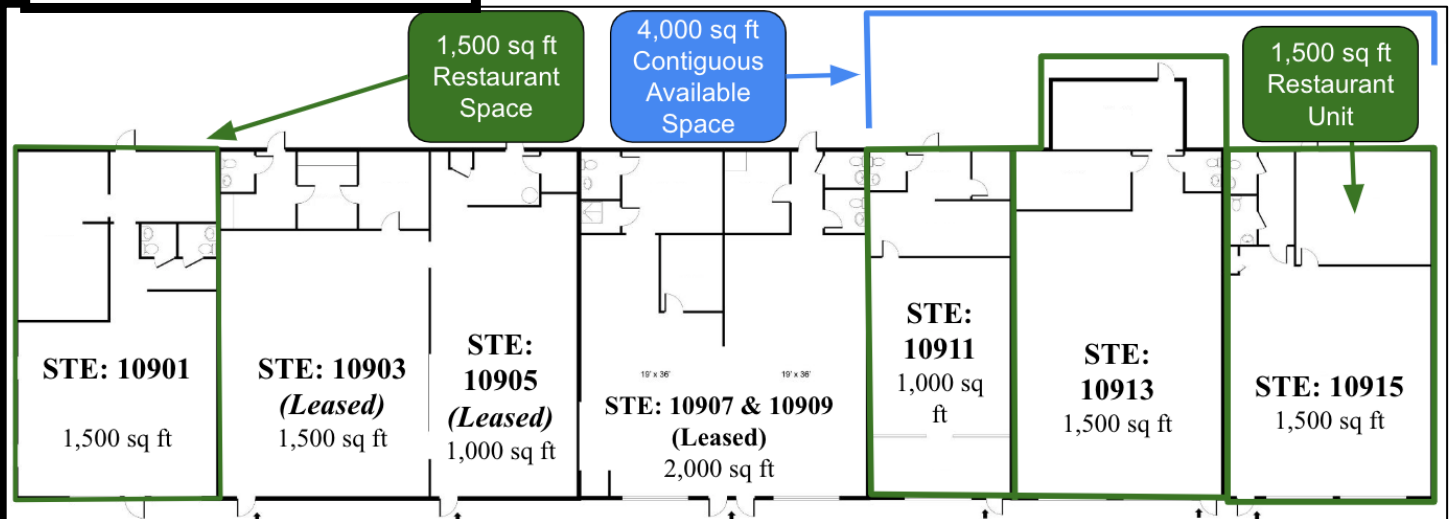
## Bellevue Retail Space Available

10901-10915 SE US-441  
Bellevue, FL 34420



**CONTACT**  
David Brim  
412-445-8960 *mobile*  
David@ResultsREpartners.com

## FLOOR PLANS



This information is from sources we deem reliable and is subject to prior sale, lease, withdrawal without notice, or change in prices, rates, or conditions. No representation is made as to the accuracy of any information furnished.