



OCEANSIDE GATEWAY BUSINESS PARK

*±2,821 SF industrial suite for
lease in Oceanside, CA*

1670 ORD WAY, OCEANSIDE, CA 92056



Property Highlights

±2,821 SF industrial suite with approximately 1,095 SF office space

Suite features reception area, two private offices, one restroom, warehouse with one roll-up door

Distributed electrical throughout warehouse

Shop sink available for use

Modern state of the art business park

Parking Ratio 2.3 / 1,000 SF

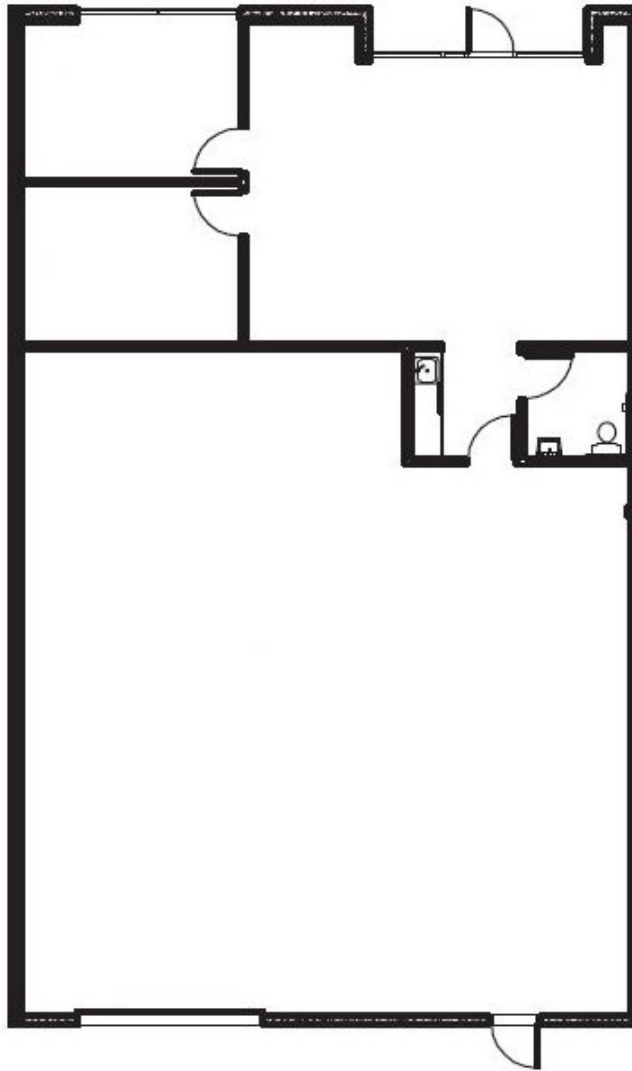
Convenient access to Hwy 76, Hwy 78 and I-5

Available June 2026

Call to show

ASKING RATE: \$4,770.00/month gross

FLOOR PLAN



+2,821 SF

AVAILABLE SF

+1,095 SF

OFFICE SF

JUNE 2026

AVAILABLE

\$4,770.00

ASKING RATE (MO/GROSS)

Reception area, two private offices,
one restroom, warehouse with one
roll-up door.

1670 ORD WAY

SITE PLAN



±2,821 SF

AVAILABLE SF

±1,095 SF

OFFICE SF

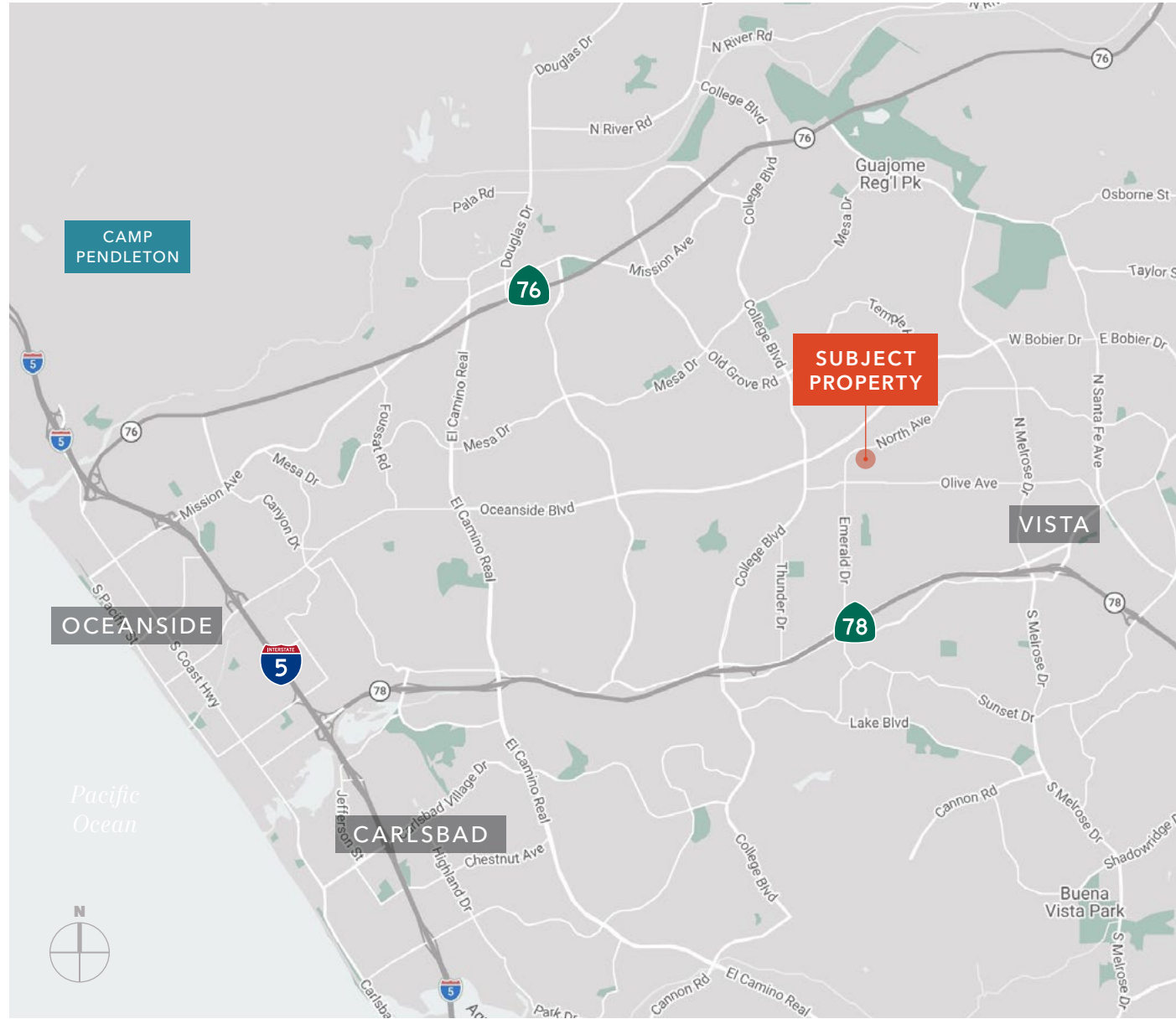
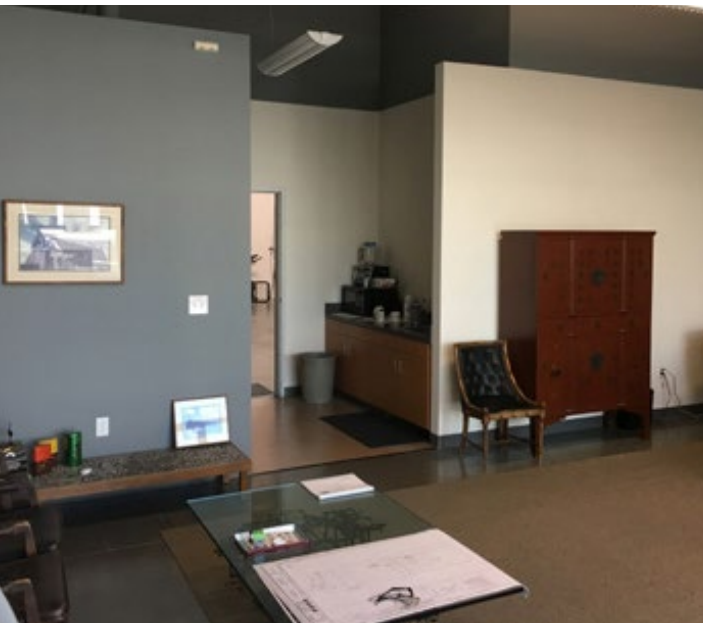
JUNE 2026

AVAILABLE

\$4,770.00

ASKING RATE (MO/GROSS)

Reception area, two private offices,
one restroom, warehouse with one
roll-up door.





Exclusively listed by

JOHN WITHERALL
Kidder Mathews
760.815.9004
john.witherall@kidder.com
LIC N° 01759453

ROB JOHNSTON
Johnston Pacific
949.336.2020
rob@johnston-pacific.com
LIC N° 01121630

KIDDER.COM

This information supplied herein is from sources we deem reliable. It is provided without any representation, warranty, or guarantee, expressed or implied as to its accuracy. Prospective Buyer or Tenant should conduct an independent investigation and verification of all matters deemed to be material, including, but not limited to, statements of income and expenses. Consult your attorney, accountant, or other professional advisor. All Kidder Mathews designs are the sole property of Kidder Mathews. Branded materials and layouts are not authorized for use by any other firm or person.