

PERIMETER PARK

2250 Perimeter Park Drive
Morrisville, NC 27560



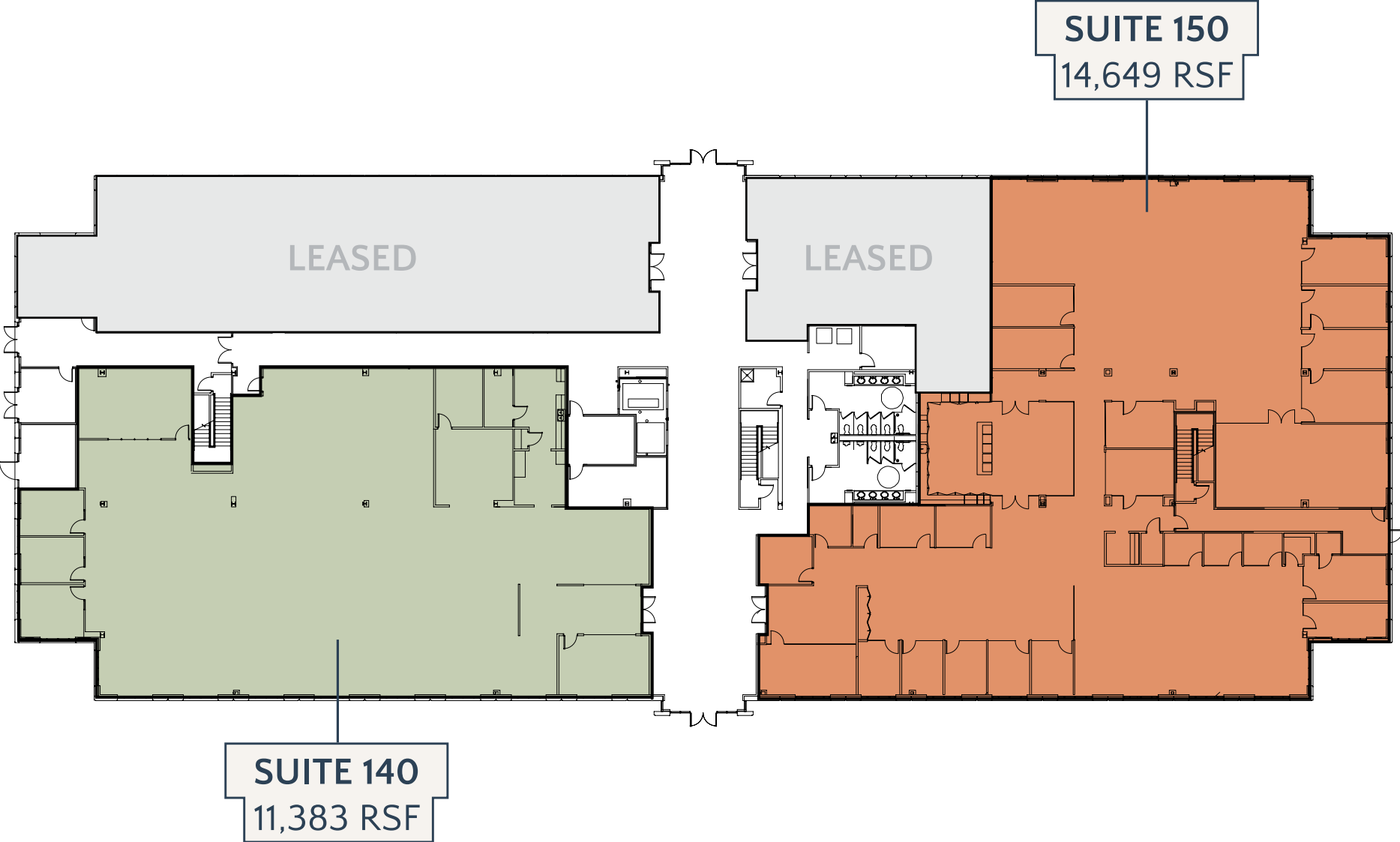
2250 PERIMETER



FOR LEASE

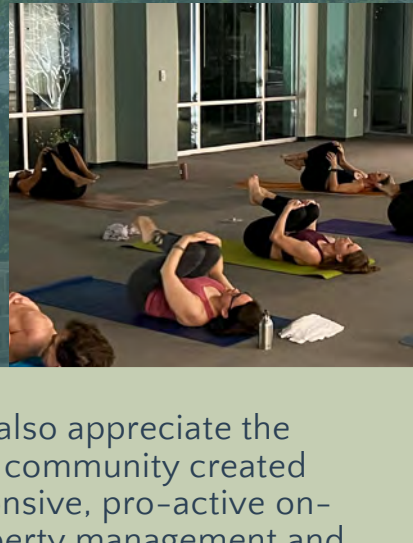
PerimeterParkOffice.com

FIRST FLOOR



tenant engagement & COMMUNITY

- Weekly food trucks
- Community drives, walks, and fundraisers
- Group fitness classes
- Live entertainment
- Skill-based workshops and more



what tenants are saying

I love the fitness classes. The teachers are great and it's a good initiative.

Super fun times. Keep creating..the events have been extraordinary and help break up the stress of my work day.

Tenants also appreciate the sense of community created by responsive, pro-active on-site property management and curated tenant engagement events throughout the year.



THE GREEN POCKET PARK



BOCCE COURT



WALKING TRAILS



THE PATIO



THE PERK CAFÉ + LOUNGE

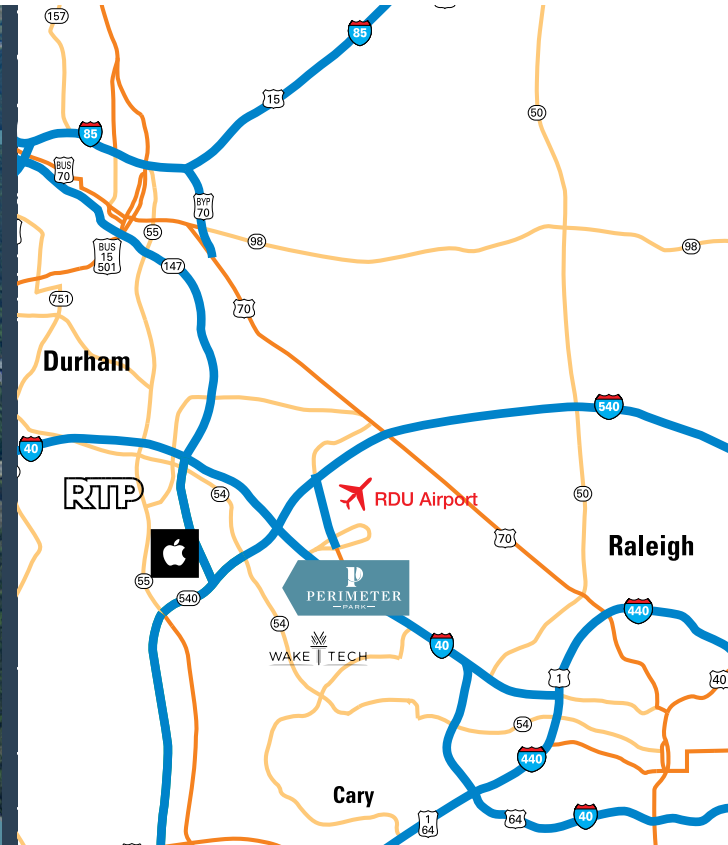


MEETING SPACE

2250 Perimeter Park offers access to the abundant amenities within Perimeter Park.

- Two fitness centers with locker rooms and showers
- The Green pocket park with bocce court and putting green
- 7 miles of walking trails
- The Perk Café and Lounge equipped with Wi-Fi and laptop hookups
- Expansive outdoor lounge just outside The Perk Café
- Meeting Space with 16-person boardroom and training room for up to 60 people
- Marketplace shops including over 10 restaurants, hotels, and services

exceptional LOCATION



WITHIN 5 MILES

400+
RESTAURANTS/BARS

580+
RETAIL OPTIONS

80+
HOTELS/LODGING

Ideally situated just off I-40 and I-540, providing easy access to all points in the Triangle, and only three minutes from Research Triangle Park and the RDU International Airport.

DETAILS

LOCATION	Perimeter Park / 2250 Perimeter Park Drive, Morrisville, NC 27560
BUILDING AREA	107,173 rentable square feet
AVAILABLE FOR LEASE	26,032 RSF
LEASE RATE	\$28.00 PSF, Full Service
TOTAL FLOORS	Three
BUILDING SERVICES	On-site property management and building engineers by Trinity Partners
EXTERIOR SIGNAGE & BRANDING	Building signage available, visible from Perimeter Park Drive



CONTACT

LEASING

William Allen

Managing Partner

919.415.4390

wallen@trinity-partners.com

Alex Dunn

Director, Office Leasing

919.415.4405

adunn@trinity-partners.com

OWNERSHIP

Headquartered in Singapore, Mapletree is a global real estate development, investment, capital and property management company committed to sustainability. With 2,700 employees worldwide, the Group strategically invests in high-growth markets and sectors, delivering award-winning projects and attractive returns across asset classes.

Mapletree manages three Singapore-listed real estate investment trusts (REITs) and nine private equity real estate funds, with assets across Asia Pacific, Europe, the United Kingdom and the United States. Since entering the U.S. in 2014, the Group has built a diverse portfolio spanning logistics, data center, office, student housing and multifamily properties – now representing 25% of its ~\$60.1 billion in assets under management.

mapletree.com.sg

PerimeterParkOffice.com

The information contained herein was obtained from sources believed reliable; however, Trinity Partners makes no guarantees, warranties, or representations as to the completeness or accuracy thereof. The presentation of this property is submitted subject to errors, omissions, changes of price or conditions prior to sale or lease, or withdrawal without notice.