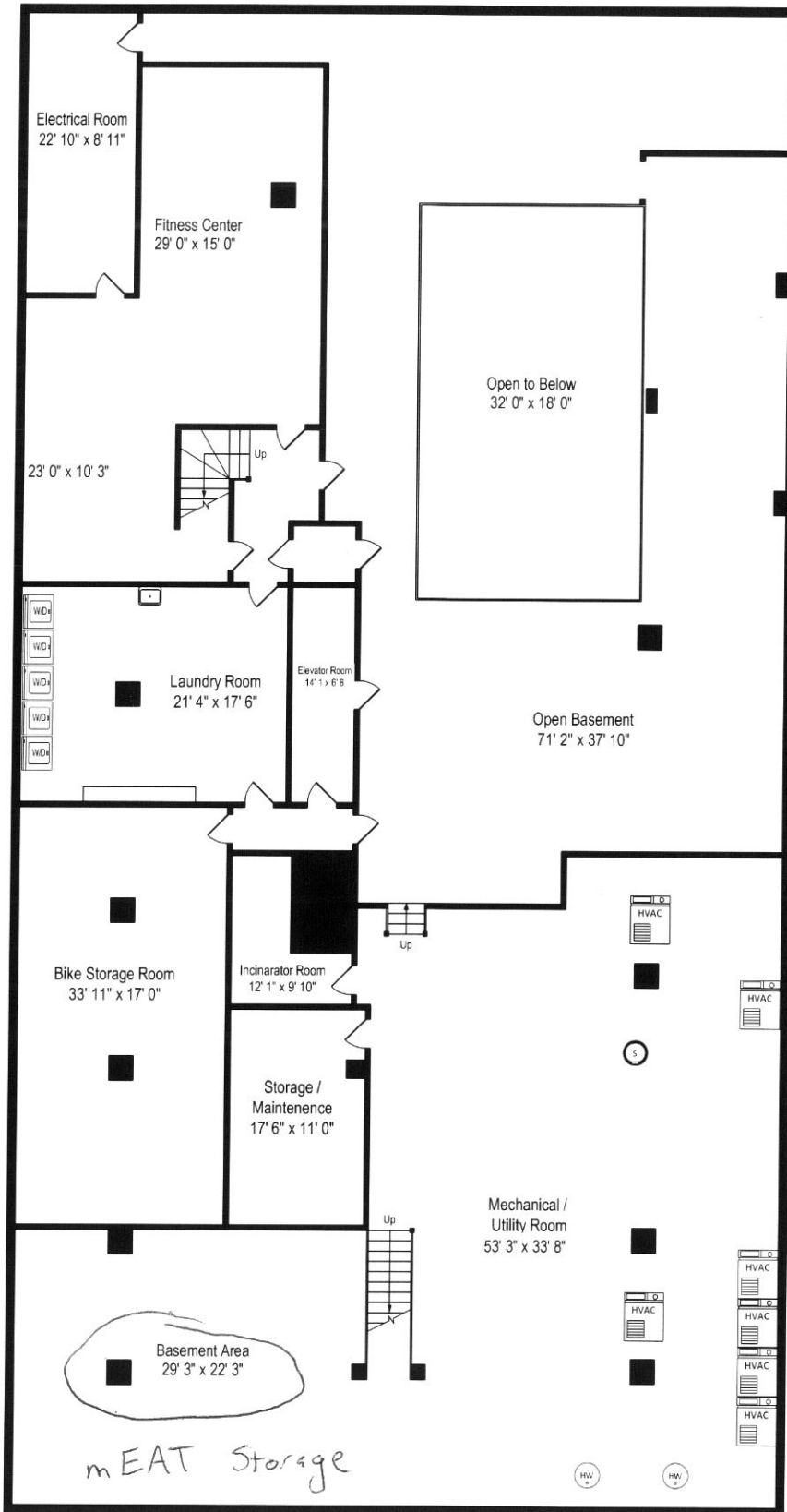


215 E. Chestnut Street
Chicago, IL 60611



Open Basement Area	2125 Sq. Feet
Open to Below	575 Sq. Feet
Electrical Room	200 Sq. Feet
Fitness Center	670 Sq. Feet
Laundry Room	370 Sq. Feet
Elevator Room	90 Sq. Feet
Bike Room	575 Sq. Feet
Incinerator Room	120 Sq. Feet
Storage / Maintenance	190 Sq. Feet
Total Mechanical Utility	2390 Sq. Feet
Usable Square Footage	7300 Sq. Feet

Total Square Footage = 7550