

EATON GREEN
ESTATE AGENTS



ANDREWS & CO.

020 7277 1717

INSURANCE

38A

ANDREWS
& Co
Insurance Services

OPENING TIMES
Monday - Friday
9.30am - 5.30pm
Saturday
10am - 1pm

INSURANCE SERVICE
BUSINESS • LANDLORD • MOTOR • LIABILITY

0207 277 1717

F.G BARBERS





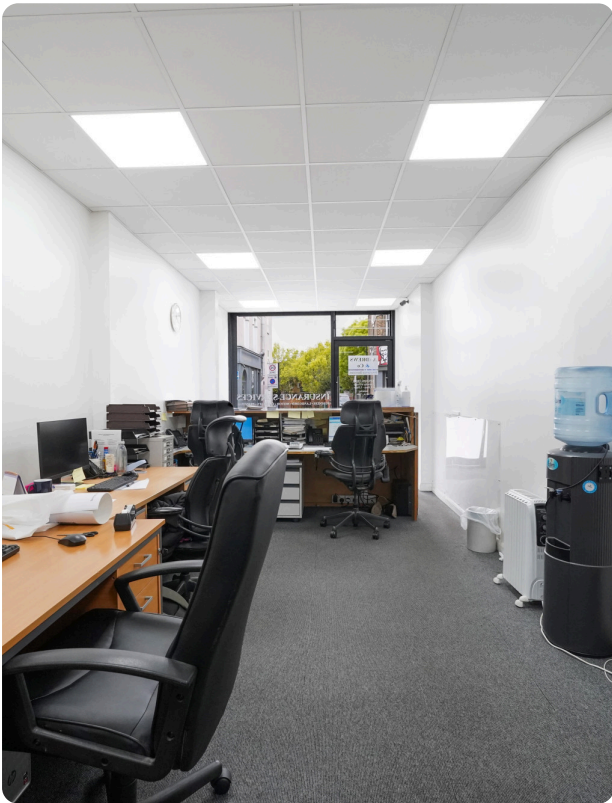
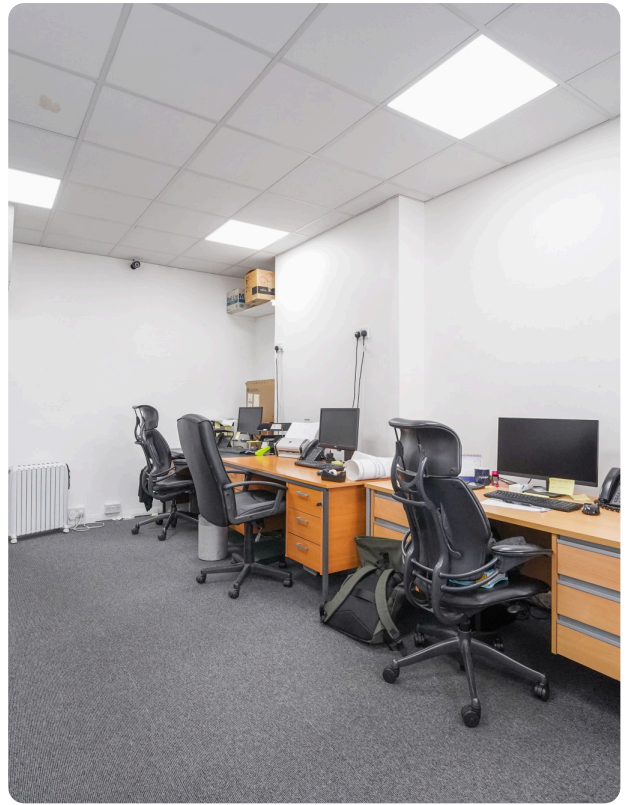
£1,833.33_{PCM}

*Camberwell Church Street,
Camberwell,
SE5*

A prominently located commercial unit situated on the busy Camberwell Church Street (SE5 8QZ), forming part of a vibrant and well-established retail parade in a lively South East London location. The property benefits from strong footfall and excellent visibility, with a variety of neighbouring shops, cafés, and local amenities, as well as nearby parkland contributing to the area's appeal. Currently configured as office accommodation, the premises would suit a range of alternative uses including office, retail, or service-based occupiers, subject to any necessary consents. The unit offers a flexible layout that can be adapted to suit a variety of business needs. The total accommodation extends to approximately 810 sq ft. Please note, the premises are not permitted to accommodate an external extraction system. New lease terms are available and are to be agreed between the parties. The property presents an excellent opportunity for occupiers seeking space within a busy and established London high street location.

FEATURES:

High Street Location.
Ground and Basement Floors
New Lease Terms TBA
High Footfall Location
Retail unit



Floorplan



GROUND
TOTAL FLOOR AREA: 810 sq.ft. (75.2 sq.m.) approx.
We do not warrant the accuracy of the measurements shown on this floor plan. The plan is for illustrative purposes only and should not be used as a basis for any property purchase. The actual dimensions of the property may vary from those shown on this floor plan. We will not be liable for any errors or omissions on this floor plan.

Camberwell Estate Agents

Located in the iconic Hanover Square minutes from Oxford Circus & Bond Street tube stations and just off Regent Street.

📍 112 Denmark Hill Camberwell
SE5 8RX London
Tel: 020 7978 8668

Mayfair Estate Agents

Located in the iconic Hanover Square minutes from Oxford Circus & Bond Street tube stations and just off Regent Street.

📍 17 Hanover Square Mayfair
London W1S 1JB
Tel: 020 7183 8887

ⓘ Under the Property Misdescription Act 1991 we endeavour to make our sales details accurate and reliable but they should not be relied upon as statements or representations of fact and they do not constitute any part of an offer of contract. The seller does not make any representations to give any warranty in relation to the property and we have no authority to do so on behalf of the seller. Services, fittings and equipment referred to in the sales details have not been tested (unless otherwise stated) and no warranty can be given as to their condition. We strongly recommend that all the information which we provide about the property is verified by yourself or your advisers.

Under the Estate Agency Act 1991 you will be required to give us financial information in order to verify your financial position before we can recommend any offer to the vendor.

