

- FLOOR AND CEILING RUNNERS—(Not Shown)—Channel shaped, fabricated from min. 25 MSG corrosion-protected steel, min. width to accommodate stud size, with min. 1 in. long legs, attached to floor and ceiling with fasteners 24" O.C. max.
- STEEL STUDS—Channel shaped, fabricated from min. 25 MSG corrosion-protected steel min. width as indicated under Item 4, min. 1-1/4 in. flanges and 1/4 in. return, spaced a max. of 24 in. O.C. Studs to be cut 3/8 to 3/4 in. less than assembly height.
- BATTS AND BLANKETS—(Required as indicated under Item 4)—Mineral wool, batts, friction fitted between studs and runners. Min. nominal thickness as indicated under Item 4. See Batts and Blankets (BKNV or BZJZ) Categories for names of classified companies.
- BATTS AND BLANKETS—(Optional)—Placed in stud cavities, any glass fiber or mineral wool insulation bearing the UL Classification Marking as to Surface Burning Characteristics and/or Fire Resistance. See Batts and Blankets (BKNV or BZJZ) Categories for names of classified companies.
- WALLBOARD, GYPSUM—Gypsum panels with beveled, square or tapered edges, applied vertically or horizontally. Vertical joints centered over studs and staggered one stud cavity on opposite sides of studs. Vertical joints in adjacent layers (multi-layer systems) staggered one stud cavity. Horizontal edge joints and horizontal butt joints on opposite sides of studs staggered a min. of 12 in. Horizontal edge joints and horizontal butt joints in adjacent layers (multi-layer systems) staggered a min. of 12 in. The thickness and number of layers for the 1 hr., 2 hr., 3 hr., 4 hr., and 6 hr. ratings are as follows:

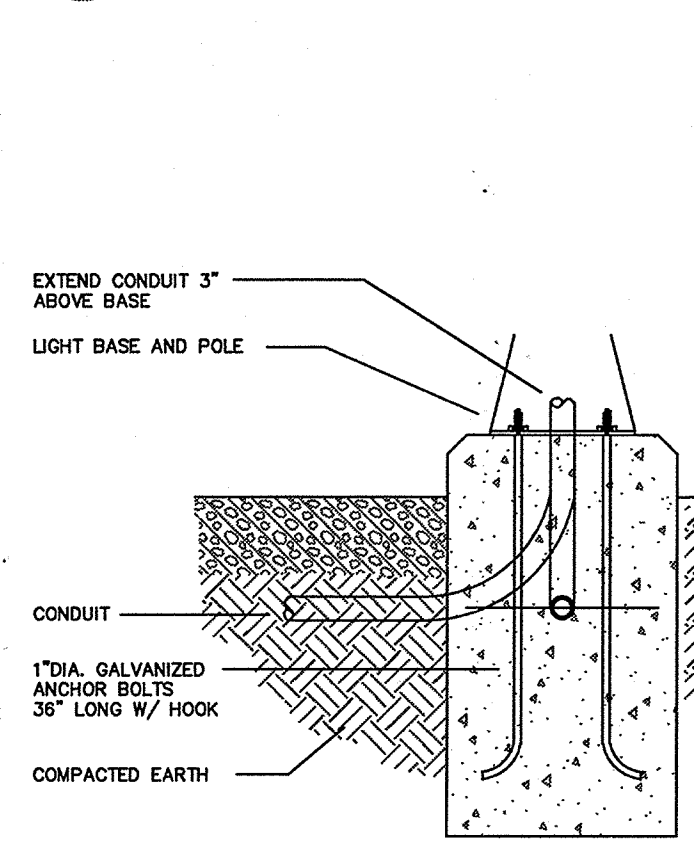
Rating	Min. Stud Depth	No. of layers and thickness of panels	Min. Thickness of Insulation (Item 3)
1	3-1/2"	1 layer, 5/8 in. thick	Optional
2	2-1/2"	1 layer, 1/2 in. thick	1-1/2 in.
1	1-5/8"	1 layer, 5/4 in. thick	Optional
2	1-5/8"	2 layers, 1/2 in. thick	Optional
2	1-5/8"	2 layers, 5/8 in. thick	Optional
2	3-1/2"	1 layer, 3/4 in. thick	3 in.

UNITED STATES GYPSUM CO.—1/2 in. thick Type C, WRC or IP-X2; 5/8 in. thick Type SCL, S16, WRX, IP-X1, AR, C, WRC or IP-X2; 3/4 in. thick ULTRAZOGE or Type IP-X3.

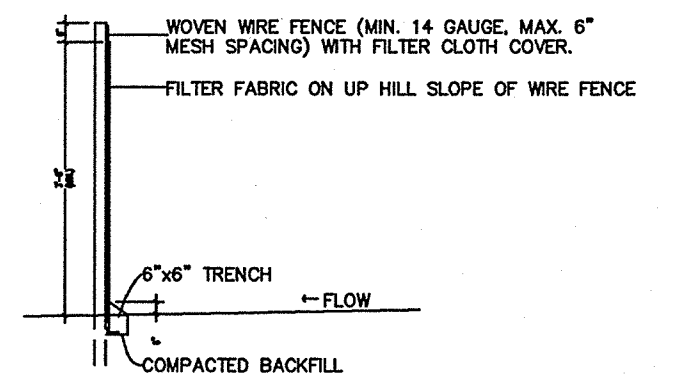
- FASTENERS—(Not shown)—Type S or S-12 self drilling, self-tapping steel screws used to attach panels to studs (Item 2) or furring channels (Item 6). Single layer systems: 1 in. long for 1/2 and 5/8 in. thick panels or 1-1/4 in. long for 3/4 in. thick panels spaced 8 in. O.C. when panels are applied horizontally, or 12 in. O.C. when panels are applied vertically. Two Layer Systems: First layer—1 in. long for 1/2 and 5/8 in. thick panels or 1-1/4 in. long for 3/4 in. thick panels, spaced 16 in. O.C. Second layer—1-5/8 in. long for 1/2 in., 5/8 in. thick panels or 2-1/4 in. long for 3/4 in. thick panels, spaced 16 in. O.C. with screws offset 8 in. from first layer. Three Layer Systems: First layer—1 in. long for 1/2 in., 5/8 in. thick panels, spaced 24 in. O.C. Second layer—1-5/8 in. long for 1/2 in., 5/8 in. thick panels, spaced 24 in. O.C. Third layer—2-1/4 in. long for 1/2 in., 5/8 in. thick panels or 2-5/8 in. long for 3/4 in. thick panels, spaced 24 in. O.C. Screws offset min. 6 in. from layer below. Four Layer Systems: First layer—1 in. long for 1/2 in., 5/8 in. thick panels, spaced 24 in. O.C. Second layer—1-5/8 in. long for 1/2 in., 5/8 in. thick panels, spaced 24 in. O.C. Third layer—2-1/4 in. long for 1/2 in. thick panels or 2-5/8 in. long for 3/4 in. thick panels, spaced 24 in. O.C. Fourth layer—2-5/8 in. long for 1/2 in. thick panels or 3 in. long for 3/4 in. thick panels, spaced 24 in. O.C. Screws offset min. 6 in. from layer below.
 - FURRING CHANNELS—(Optional, not shown, for single or double layer systems) Resilient furring channels fabricated from min. 25 MSG corrosion-protected steel, spaced vertically a max. of 24 in. O.C. Flange portion attached to each intersecting stud with 1/2 in. long Type S-12 panhead steel screws.
 - JOINT TAPE AND COMPOUND—Vinyl or cashew, dry or premixed joint compound applied in two coats to joints and screw heads of outer layers. Paper tape, nom. 2 in. wide, embedded in first layer of compound over all joints of outer panels.
 - SPACING BRICK OR STUCCO—(Optional, not shown)—aluminum, vinyl or steel siding, brick veneer or stucco, meeting the requirements of local code agencies, installed over gypsum panels. Brick veneer attached to studs with corrugated metal wall ties attached to each stud with steel screws, not more than each sixth course of brick.
 - CAULKING AND SEALANTS—(Optional, not shown)—A bead of acoustical sealant applied around the partition perimeter for sound control.
- United States Gypsum Co.—Type AS
*Bearing the UL Classification Marking

- SEDMENT AND EROSION CONTROL FACILITIES AND STORM DRAINAGE FACILITIES SHALL BE INSTALLED PRIOR TO ANY OTHER CONSTRUCTION.
- CONTRACTOR SHALL INSTALL SILT FENCES IN LOCATIONS SHOWN ON THE SITE PLAN.
- CONTRACTOR SHALL MAINTAIN EROSION CONTROL FACILITIES DURING THE ENTIRE CONSTRUCTION PERIOD. FACILITIES ARE NOT TO BE REMOVED UNTIL COMPLETION OF THE PROJECT.
- ADDITIONAL DEVICES MAY BE REQUIRED AS DEEMED NECESSARY BY GOVERNING AUTHORITIES.
- SILT FENCES SHALL BE CLEANED OR REPLACED WHEN SILT BUILDS UP TO HALF OF THE FENCE HEIGHT.
- EROSION CONTROL MEASURES ARE TO BE INSPECTED WEEKLY AND AFTER EACH RAINFALL AND REPAIRED AS NECESSARY AT NO ADDITIONAL EXPENSE TO THE OWNER.
- CONTRACTOR SHALL STAKE HYDRAULIC PERIMETER OF DRAINAGE INLETS AND MAINTAIN THROUGHOUT SUBSTANTIAL COMPLETION. SEE EROSION CONTROL DETAIL.
- CONTRACTOR TO PLACE FILTER CLOTH BETWEEN THE GRATE AND FRAME OF DRAIN INLETS AND MAINTAIN THROUGHOUT SUBSTANTIAL COMPLETION. CLOTH AND GRATE TO BE CLEANED AS NECESSARY TO ENSURE PROPER DRAINAGE.
- ALL HYDRAULIC DEVICES FOR EROSION CONTROL SHALL BE STAKED IN PLACE.

8 Erosion Control Notes
Not to Scale

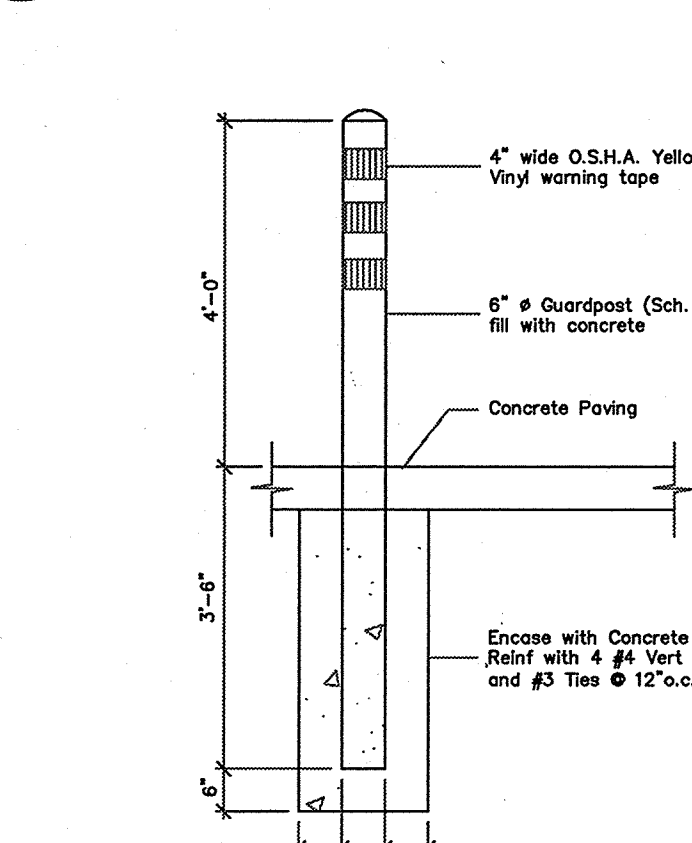


6 Light Pole Base Detail
Not to Scale

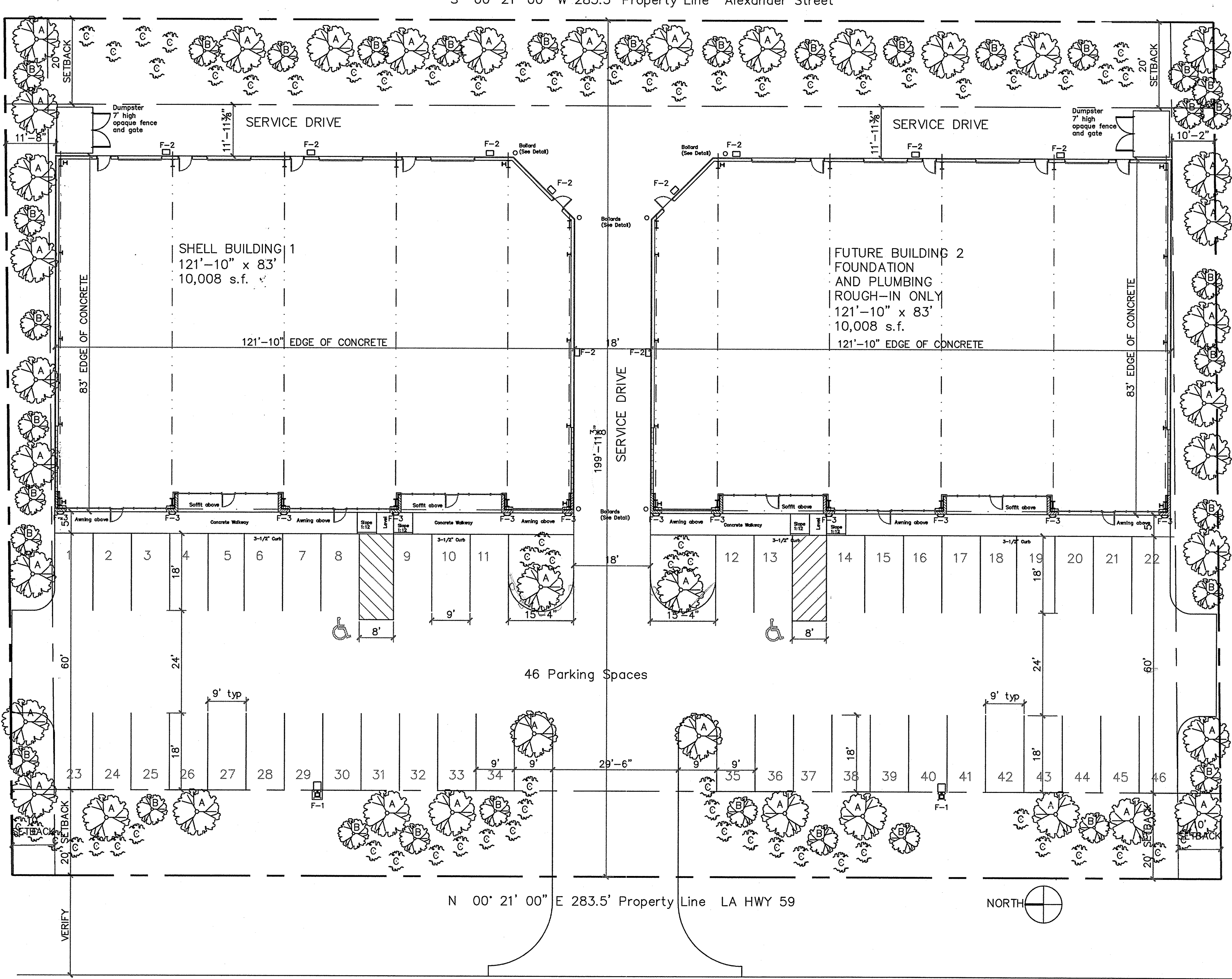


POSTS: STEEL EITHER T OR U TYPE OR 2"x2" HARDWOOD.
FENCE: WOVEN WIRE, 14 GA. 6" MAX. MESH OPENING.
FILTER CLOTH: FILTER FABRIC, 20 LBS. PER YARD, 1/2" THICK, STABILIZED, TYPICAL PREPARED FABRIC, ENVIRONMENTAL OR APPROVED EQUAL.
NOTE: SILT FENCE SHALL ALSO BE PLACED ON THE UP-SLOPE SIDE OF ALL DRAINAGES.

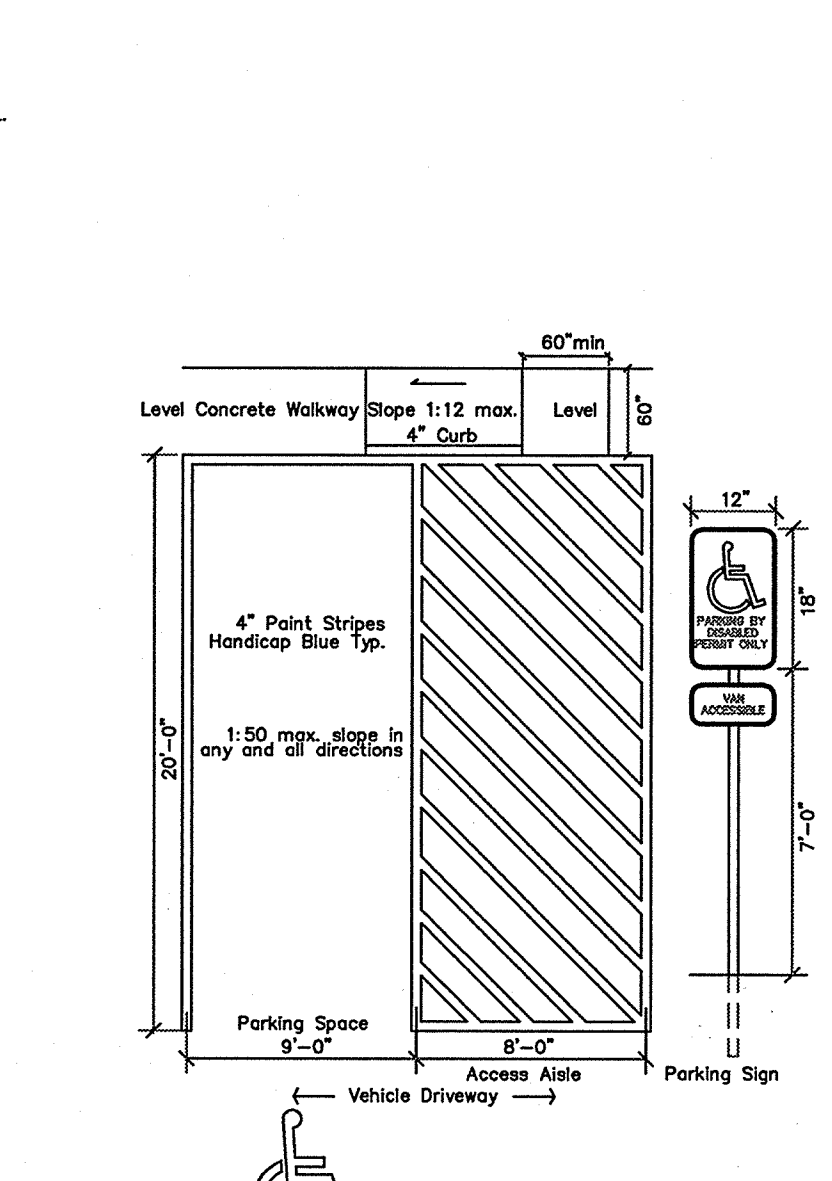
7 Silt Fence Detail
Not to Scale



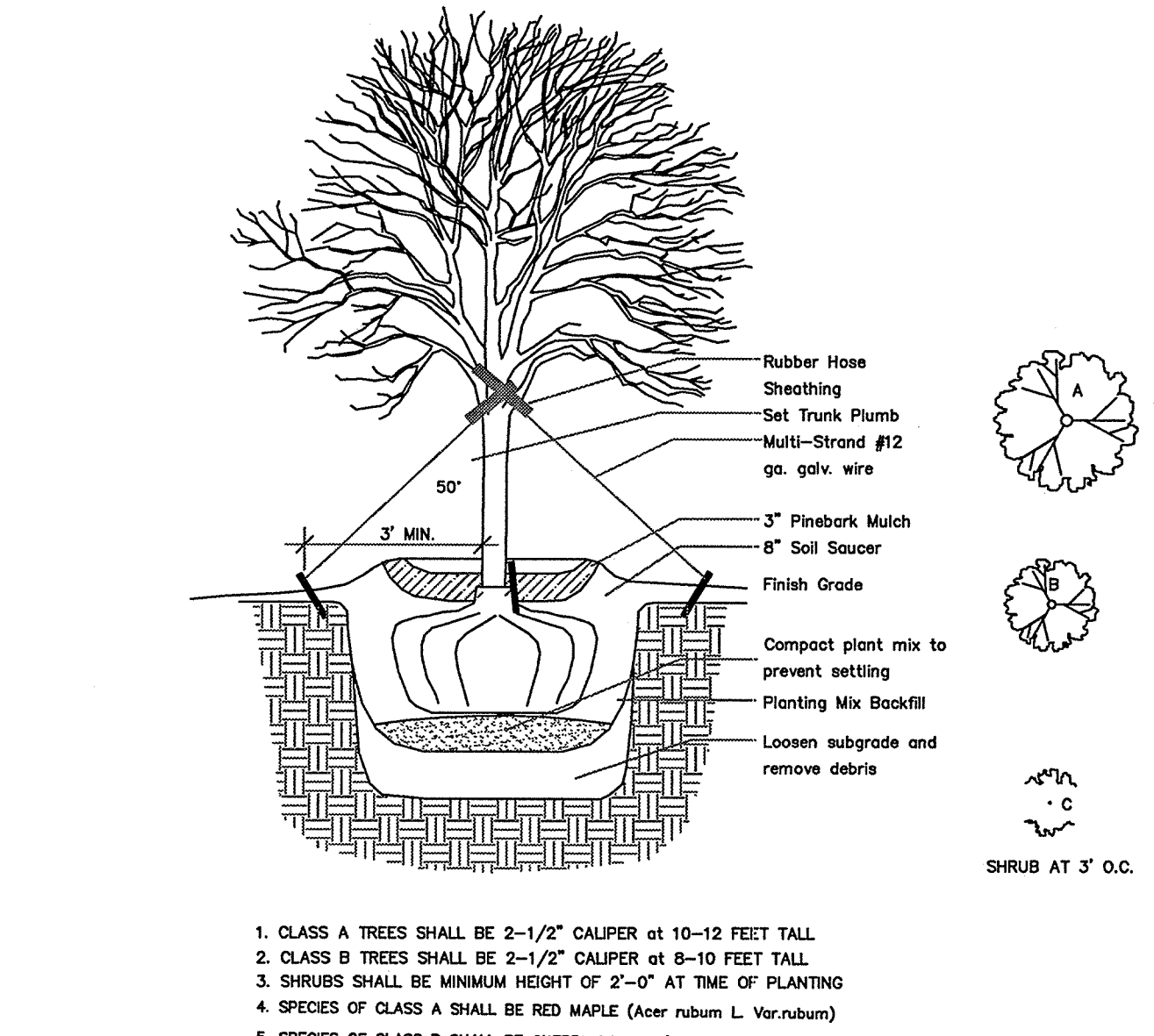
5 Bollard Detail
Not to Scale



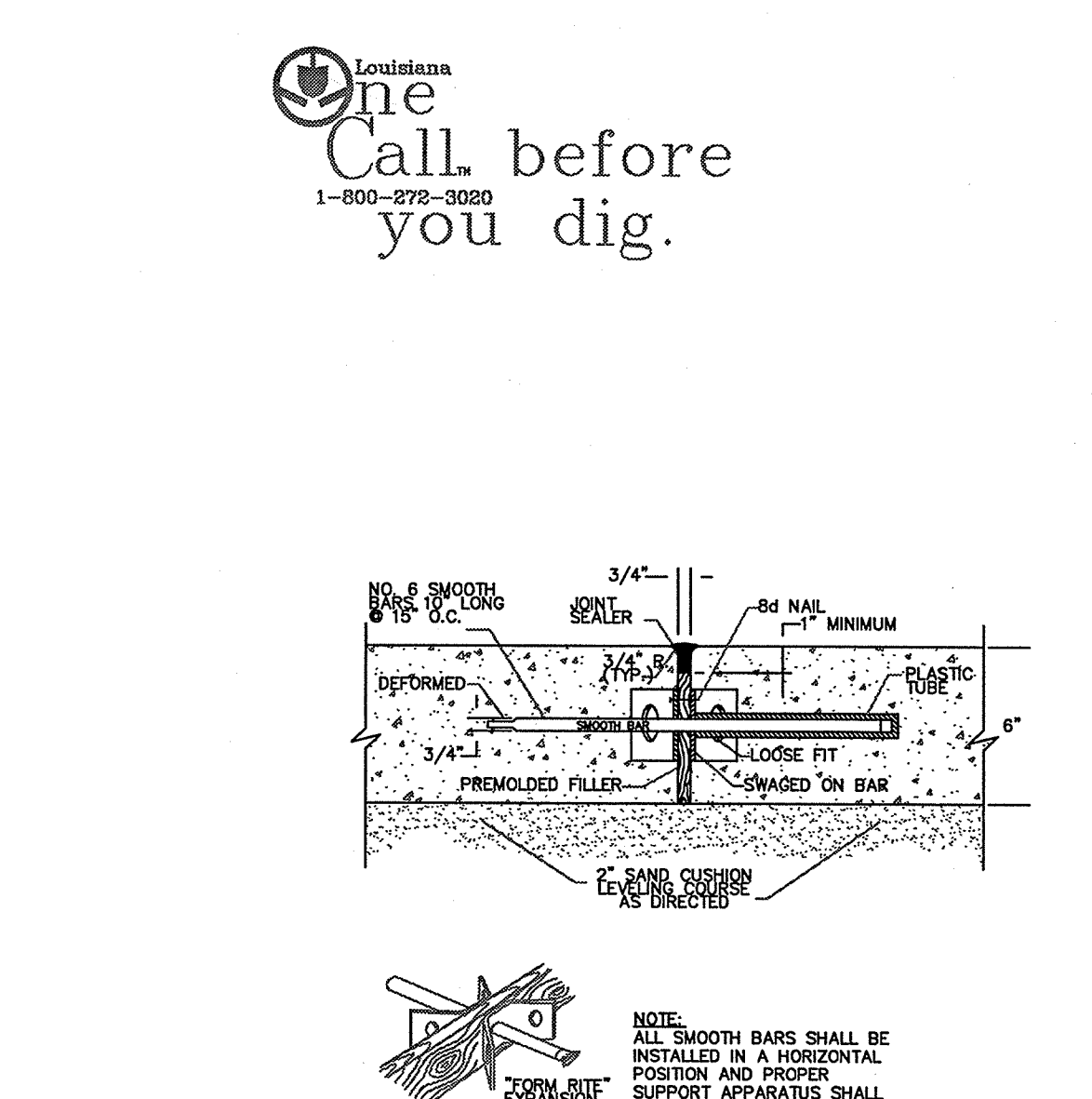
1 Site Plan
1/16" = 20'-0"



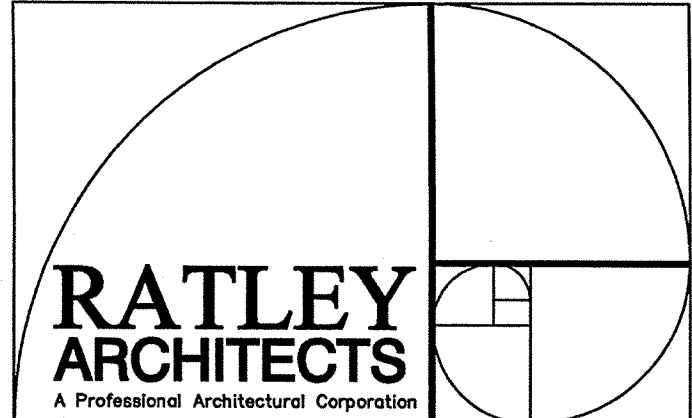
4 Parking Detail
Not to Scale



3 Planting Detail
Not to Scale



2 Control Joint Detail 20'-0" o.c. typ.
Not to Scale



73279 Allen Road
Abita Springs LA 70420
voice+fax: 985.867.9509
cellular: 985.630.9682
ratleyarchitects@bellsouth.net

LATEST
REVISED
VERSION

Stephen C. Ratley, AIA

- GENERAL CONDITIONS**
- Contractor shall obtain all permits and approvals required from authorities having jurisdiction. Construction shall not begin until the Contractor has received and thoroughly reviewed all contract documents and documents of authorities having jurisdiction. Contractor shall secure necessary permits and approvals from authorities having jurisdiction prior to performing work interfering with traffic of adjacent roads and shall conform with Manual on Traffic Control Devices of the State of Louisiana. Furnish and maintain all necessary or required signs and/or barricades during the work.
- Contractor shall examine all contract documents and secure additional information from the architect as required for a full understanding of the work. During the bid period, if any, discrepancies, conflicts and interpretations of the contract documents shall be submitted in writing to the architect. The architect shall issue written addenda as required for clarification.
- Contractor shall coordinate with local utility companies as may be required. Verify location of all underground and overhead utilities prior to work on the site. Removal and/or relocation of utilities, meters, valves, etc. shall be performed per requirements of utility companies. Damage to existing utilities shall be repaired by Contractor.
- Contractor shall contain construction / demolition within boundaries of site or as designated herein. Contractor shall repair damage caused to adjoining property. Protect vegetation, structures, utilities, pavements and other facilities to remain from damage caused by clearing, demolition and new construction.
- Contractor shall perform all work in a safe and orderly manner avoiding hazardous conditions wherever possible. Provide all necessary, temporary shoring and bracing required to maintain safe and structurally sound execution of the work. Erect suitable barriers at hazardous areas to deter pedestrian traffic and prevent normal access to such areas to unauthorized persons. Perform all work in accordance with latest edition applicable safety codes, standards and regulations. Keep site clean during the work, track out debris and not accumulate at the site. Remove all waste materials from the site and dispose legally. Final cleanup and repair in part of this work.

CIVIL ENGINEERING
See additional drawings as prepared by Scafano Engineering, Inc. (855.862.6383) for Fencing, Drainage, Water, Sewer and Stormwater Treatment.

FOUNDATION DESIGN
See additional drawings PT-1 and PT-2 as prepared by Engineering Services, Inc. (855.641.5764) for foundation design.

SITE LIGHTING CRITERIA
All exterior lighting shall be shielded or heavily directed in such a manner so that no direct lighting or glare is cast beyond the property line. The intensity of such lighting shall not exceed one (1) foot candle as measured at the abutting property line. Outdoor lighting illumination shall follow the recommended guidelines for the luminaire schedule established in the IESNA Lighting Handbook, 1987 Application Volume, Section 2-14.

- F-1: Parking Area Light; ACCULITE ALUMINUM
- F-2: Wall Security Light; ACCULITE DW 175MH-120NP-PC
- F-3: Wall Decorative Sconce; TROY LIGHTING BENNINGTON 1352PZ-26watt-0F

SITE SIGNAGE CRITERIA
No exterior signage is a part of this work until plans for tenant improvements shall be submitted for review and approval. All types of signs require permits. A sign review and approval will be made by St. Tammany Parish Department before a permit is issued. Submit the sign packet as a separate packet for the types of signs listed below for review and approval:
Freestanding Signs (Single or Complex)
Facade Signs (Building or Wall Signs)
Interstate Signs (If Applicable)
Banners (Temporary Signs)

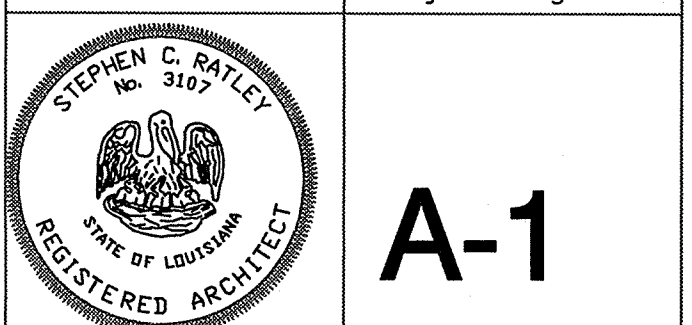
DESIGN CRITERIA
This structure shall be designed in accordance with the 2006 International Building Code and with criteria for wind speeds up to 115 mph (33g).
Building Category II
Wind Factor: 1.00
Exposure B
Flood Zone C per survey provided by Owner
Floor Loads: Live 100 psf, Dead 20 psf
Roof Loads: Live 20 psf, Dead 10 psf ceiling attached to purlins

PROJECT DATA

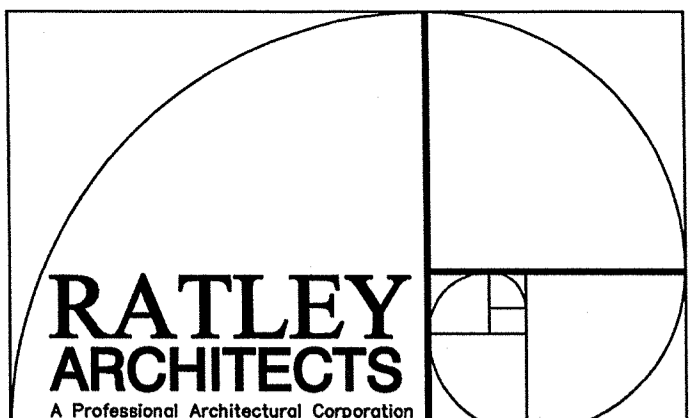
BUILDING TYPE: Shell
OCCUPANCY CLASSIFICATION: II-B (000)
NUMBER OF STORES: 1
SQUARE FOOTAGE: 10,122 sq. Gross Bldg Area
This information is the property of Ratley Architects, A Professional Architectural Corporation and is submitted on the condition that it is not to be used, reproduced, or copied, in whole or in part, or used for furnishing information to others, without the prior written consent of Ratley Architects, A.P.A.C. All common law rights of copyright and otherwise are hereby specifically reserved.
These plans and specifications have been prepared by me, and to the best of my knowledge and belief, they comply with all Parish requirements. I am administering the work of this project.
By: _____ License No.:

**Shell Building Development
Building One
for Sugan Properties, Llc.**
La Hwy 59
Abita Springs, Louisiana

01/30/2008	2006-25
Construction	Hwy59.dwg



A-1



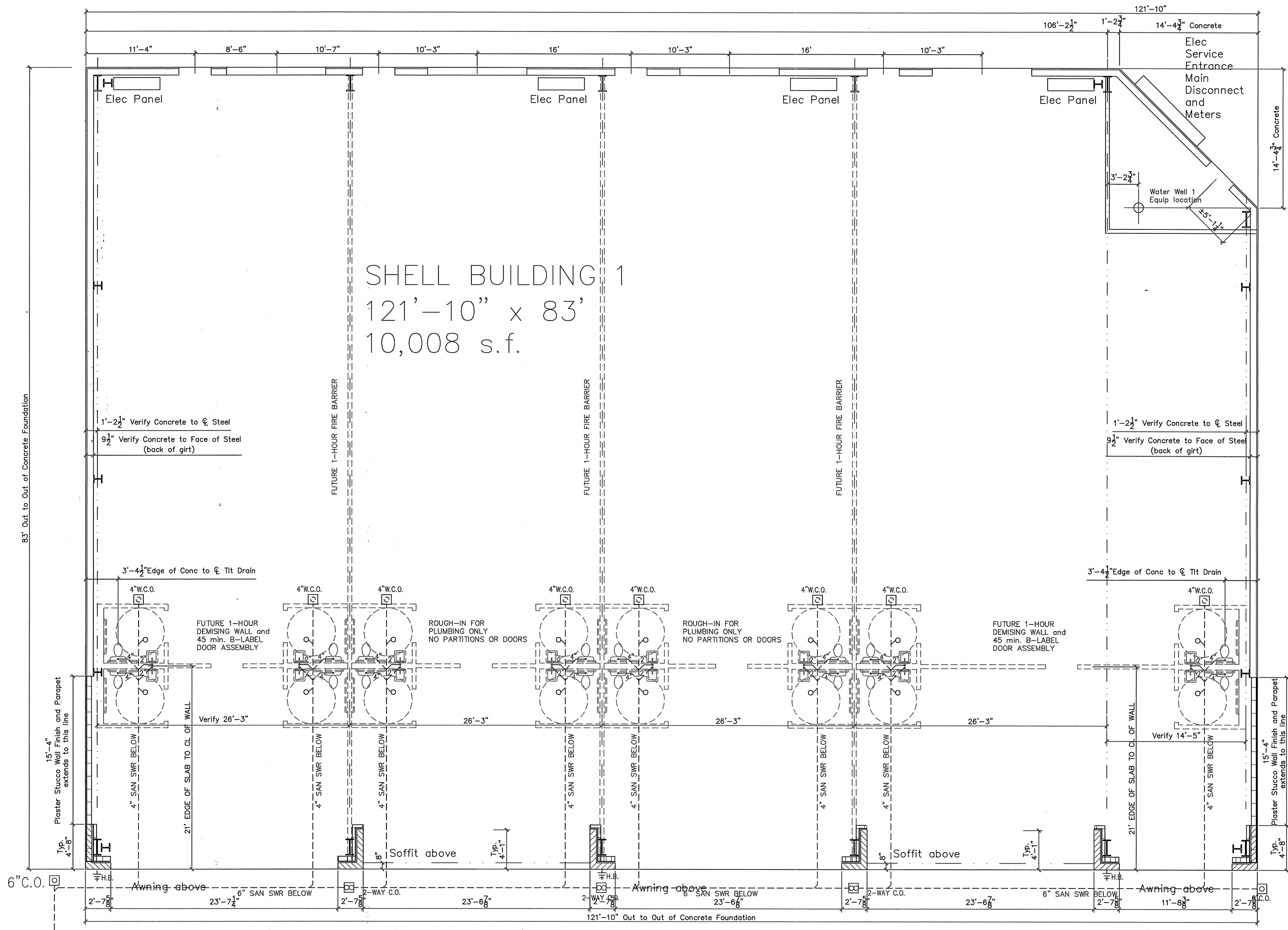
73279 Allen Road
 Abita Springs LA 70420
 voice+fax: 985.867.9509
 cellular: 985.630.9682
 ratleyarchitects @ bellsouth.net

Stephen C. Ratley, AIA

SITWORK
 Remove the entire depth of topsoil from areas to be occupied by structures, paving, drives, walkways, sidewalks and landscaping and dispose legally. Notify architect of any special soil or water conditions present at the site. Contractor shall provide soil test, by independent soil laboratory, as directed by the architect, for all compacted fill as follows: One standard proctor in fill material six density test on compacted fill at locations directed by architect, with compaction certificate as may be required. Sub-grade shall be free of extraneous material. Proofroll soil subgrade prior to placing base. Soft or unstable areas detected thereby shall be undercut to firm soil and backfilled with engineered earth fill compacted as specified. The sub-grade for all concrete shall be uniformly stable prior to placing base. No base material shall be placed if the sub-grade indicates pumping. Place base fill material in horizontal layers not exceeding 4" in depth and compact each layer with mechanical tamper. A base leveling course of good quality sugar sand or pumped sand shall be placed below concrete paving and shall be compacted to at least 95% of maximum dry density at optimum moisture content according to ASTM D-698. In place density measurements may be required to assure degree of compaction. All site preparation data in these documents and/or soil report shall be minimum acceptable standards. Remove soil to a depth of 18" to 24" at building areas. Replace with earth fill as specified above. Coordinate with elevations given per Proposed Drainage Study Map and Drainage Study as prepared by Civil Engineer.

RIGID FRAME METAL BUILDING:

Design Wind Speed shall be 130 mph (3sg) per 2003 IBC. The Contractor shall be MBMA classified and AWS certified. The Contractor shall furnish for review by the architect prior to fabrication, complete erection drawings and specifications indicating anchor bolt locations, size and reactions, side wall, end wall and roof framing, transverse cross section, covering and flashing details, and necessary installation details to clearly indicate proper assembly of all building parts furnished. Erection drawings, reaction calculations and specifications shall be sealed by a Louisiana licensed civil engineer and contain wind load calculations as required to comply with local code. The building shall contain all primary and secondary structural framing members, connection bolts and welds, covering, flashing, fasteners, closures, soakers, insulation and other miscellaneous items required or called for in the contractors drawings and specifications. The building shall be in compliance with the 2003 Edition of the International Building Code, the American Institute of Steel Construction, latest edition standards, and MBMA latest edition standards. All hot rolled steel sheet piling and strip used in the fabrication of welded assemblies shall conform to the requirements of ASTM A-529, A-572, or A-570. Smooth round bars for diagonal bracing shall conform to the requirements of ASTM A-572. All shop connections shall be welded in accordance with AWS standard code for welding and building construction. All field connections shall be bolted. Bolts shall be machine bolts conforming to ASTM A-307 or A-325. All bolts shall be electro-zinc plated. Roof panels: R-Panel profile, 24 gauge galv.-lum, with thermal breaks, 50 year warranty, submitted to Owner. Roof and wall insulation: Reinforced vinyl scrim facing in accordance with ASTM E-84, NFPA 253 and UL 723, not to exceed 25 flame spread and 50 smoke developed, R-30 indicated on facing. The contractor shall furnish and install matching color, finish and material of all exposed flashings.

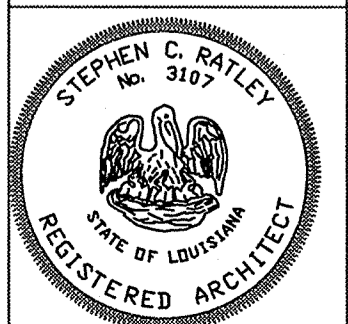


SHELL BUILDING 1
 121'-10" x 83'
 10,008 s.f.

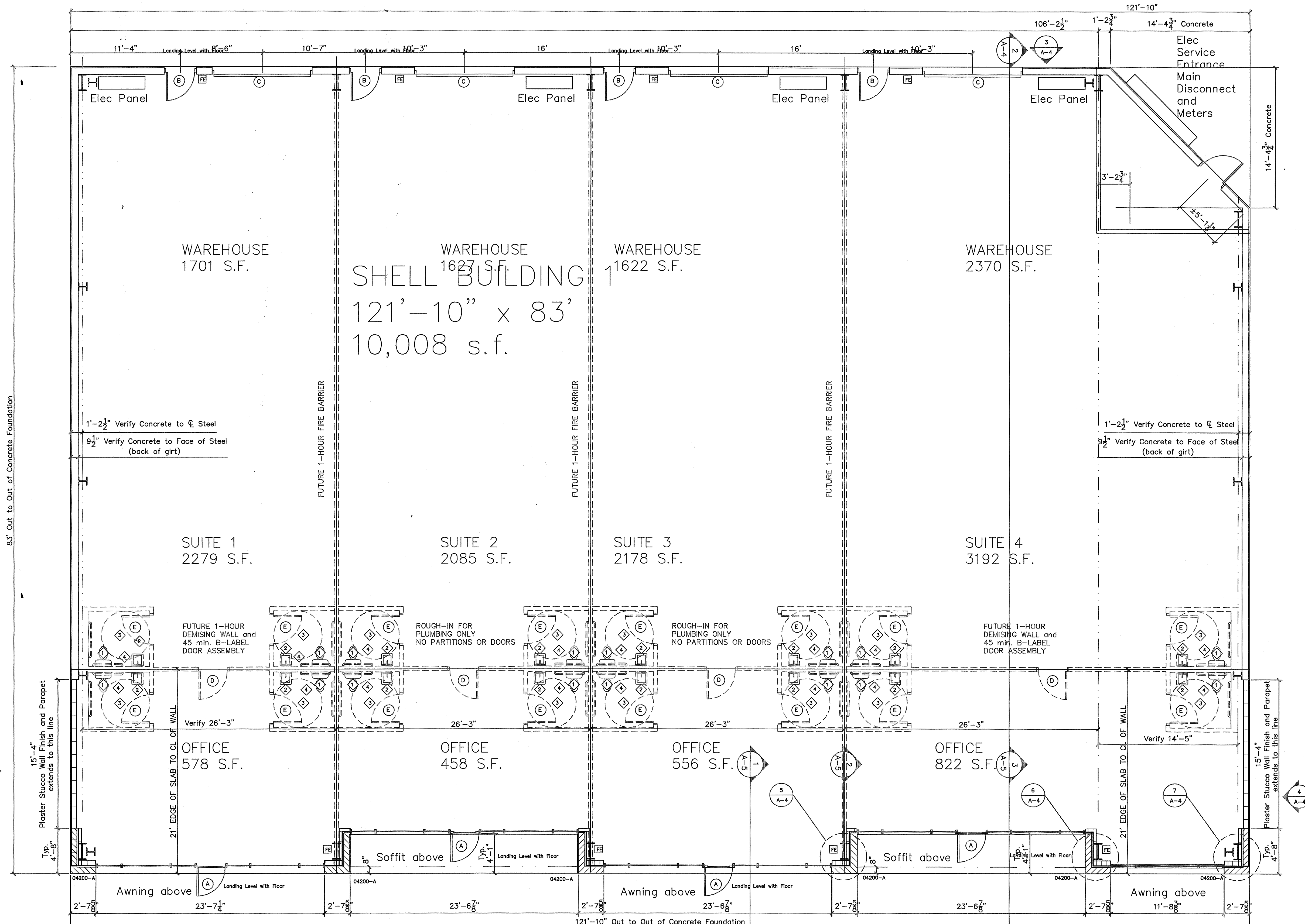
1 Plumbing Rough-in Plan
 3/16" = 1'-0"

Shell Building Development
 Building One
 for Sugen Properties, Llc.
 La Hwy 59
 Abita Springs, Louisiana

01/30/2008 2006-25
 Construction Hwy59.dwg



A-2



BUILDING CODE REQUIREMENTS

2006 Edition of NFPA 101 - Life Safety Code

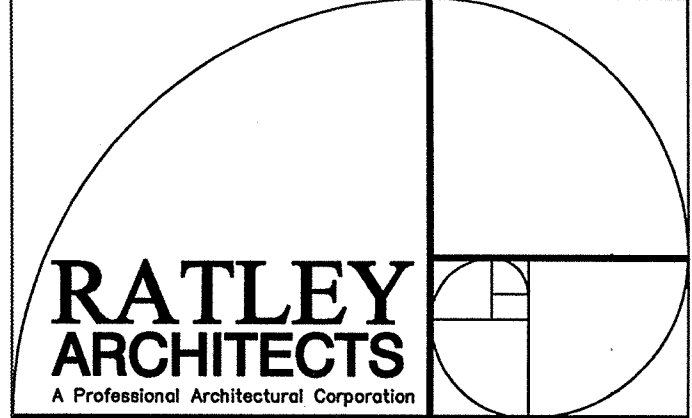
Classification of Occupancy: New Storage Occupancy per 6.1.1.3.1
 Classification of Hazard: Ordinary hazard in accord with 6.2.2.3
 Minimum Construction Requirements: No special requirements per 42.1.6
 Occupant Load: N/A per 7.3.1.2 (48 max per IBC)
 Means of Egress Requirements: Stairways with per person = 0.3' Level components = 0.2'
 Egress Capacity: 1 Exit required per 42.2.4
 Number of Exits: 80 feet per 42.2.5
 Dead End Corridor: 50 feet per 42.2.5
 Common Path of Travel: 200 feet per 42.2.6
 Travel Distance to Exits: Protection from Hazards provided by 1-hour fire rated fire barrier per 8.3.
 Interior Finish: Exit enclosures = Class A or B or C
 Other spaces = Class A or B or C
 Interior Floor = Class II exit enclosure

Detection, Alarm and Communication System: Not required per 42.3.4.1.2
 Extinguishment Requirement: Not required per 42.3.5
 Corridors: Non-Rated per 42.3.6
 Utilities: Utilities shall comply with Section 9.1
 Heating, Ventilating and Air Conditioning: HVAC shall comply with Section 9.2

2006 Edition of International Building Code

Use and Occupancy Class: Group S-1, moderate-hazard storage, per IBC 311.2
 Req'd. Occupancy Separation: 2-hour per IBC table 508.3.3
 Construction Type Limit: Group S-1, moderate-hazard storage, per IBC 311.2
 Height Limit: 40 feet per IBC 503
 Max Number of Stories: 3 per IBC 503
 Max Area per Floor: 28,420 sq ft per IBC 506
 Fire Resistance Req'd: TYPE III B per IBC Table 601
 Fire Separation Distance: X ≥ 30' 0-hour separation per IBC 602
 Exterior Opening Protectives: unlimited, un-protected per IBC table 704.8 note 1
 Fire Walls on Property Line: 3-hour per IBC 705.4
 Vertical Shaft Enclosures: 1-hour C 4 stories per IBC 707.4
 Fire Partitions: Not required per IBC 708
 Smoke Barriers: 1-hour per IBC 709
 Smoke Partitions: Non-Rated per IBC 710
 Horizontal Assemblies: Per Section 508.3.2 per IBC 711
 Fire Alarm and Detection System IBC 907: Not required
 Design Occupant Load: 500 gross sq ft/person IBC 1004.1.1
 Egress width per person per Table 1005.1 without sprinkler: 0.2 inches other components
 Egress illumination per 1006: Means of egress illumination shall not be less than 1 foot-candle at the floor level with battery backup for 90 minutes.

Accessible Means of Egress per 1007:
 Common Path of Travel Limit per IBC 1014.3: 75 feet
 Exit and Exit Access per IBC 1015: Minimum 2 req. per occupant load
 Exit Travel Distance per IBC 1016: 200 feet without sprinkler
 Corridor Fire Resistance Rating per IBC 1017.1: 1-hour with occupant load > 30 persons without sprinkler
 Dead End Limit per IBC 1017.3: 20 feet
 Exits req'd per occupant load per IBC 1019: 1-500 = 2 Exits or 1 Exit with 29 occupants and 100 feet travel distance at grade



73279 Allen Road
 Abita Springs LA 70420
 voice+fax: 985.967.3509
 cellular: 985.630.9682
 ratleyarchitects @ bellsouth.net

ARCHITECTURAL SYMBOLS

North Arrow

Drawing Number: 1/8"=1'-0"

Drawing Sheet Number: Reference Elevation Mark

Office: Room Name, 4th Ltr: Base Board, 3rd Ltr: Ceiling Finish, 2nd Ltr: Wall Finish, 1st Ltr: Floor Finish

1-Hour Fire Barrier, U.L. Design No. U551 Refer to Architectural Notes

2-Hour Fire Barrier, U.L. Design No. U419 Refer to Architectural Notes

Portable Fire Extinguisher: 2A10BC Top of fire extinguisher having a gross weight less than 40 lbs. shall be not more than 5 feet above the floor. 3-# if gross weight is 40 lbs. or greater. Provide minimum one fire extinguisher for each 2,500 square feet of gross building area in accord with NFPA-101, 7-7.4 and NFPA 10.

03300-A Keynote Schedule Mark

Opening Schedule Mark

Equipment Mark

FUTURE PLUMBING SCHEDULE

1 Floor mounted, Elongated Toilet and seat, ADA-AG compliant

2 Wall mounted lavatory and Lever mixing valve and faucet shall be ADA-AG compliant. Insulate pipes below with TRUBORO performed or equal.

3 Floor Drain with trap primer, J-box or equal

4 On-Demand, In-Line Electric Water Heater

5 Freeze proof Hose Bibb, recessed

6 Wall Mounted Utility Sink

7 Comply with 2009 Edition of Louisiana Plumbing Code. Gas piping systems, materials, equipment and installation shall be in accordance with NFPA 54-National Fuel Gas Code, latest edition. Gas piping shall be run exposed and in accessible spaces. Furnish and install reduced pressure backflow preventer as required. All water lines shall be copper, sewer lines shall be PVC. Hony all under slab sewer lines shall be supported by means of a carrier as manufactured by Jowen, Jurn or equal. Terminate condensate drain lines of equipment into an approved Plumber shall coordinate all rough-in requirements of fixtures and equipment with General Contractor. Food Service equipment shall be installed in strict accordance with NFPA 101:12.7.1. Plumber shall verify locations of all mains, vents and tie-ins prior to start of construction. Floor drains shall be furnished with trap primer.

ARCHITECTURAL NOTES

Comply with 2006 Edition of NFPA 101 - Life Safety Code. Comply with 2006 Edition of International Building Code. Comply with Commercial Building Energy Conservation Code, the applicable standard for commercial buildings, except low-rise residential buildings, is the American Society of Heating, Refrigerating and Air Conditioning Engineers and Illuminating Engineering Society of North America Standard 90.1-2004 Edition. (ANSI/AIAA/IESNA 90.1-2004), with Section 9.2 of Louisiana Amendments.

Locks on exterior doors in a means of egress shall not require the use of a key, special device or special knowledge, or effort of operation from the egress side of the door. Door hardware shall not require tight gripping, tight pinching or twisting of the wrist to operate. Doorways in means of egress shall be 32" minimum clear width. The floor shall be level on both sides of a door. Landings outside exterior doors shall be level with the interior floor. Thresholds shall not exceed 2" in height and shall be beveled if over 2". Paving and all floor surfaces shall be slip resistant under all weather conditions. Provide signage at accessible entrances and directional signage at all accessible entrances. Handicap parking signage shall not be obscured by vehicle. Penetrations through rated construction shall be sealed by approved firestop systems or devices tested in accordance with ASTM E-814 or UL 1479 or by assembly of firestopping materials capable of preventing the passage of flames and hot gases when tested and rated in accordance with NFPA 251. Contractor shall notify District Office of Louisiana State Fire Marshal for inspection of oil completed fire and/or smoke barrier walls BEFORE any construction is installed that would conceal such construction and prevent proper inspection. Access to regularly selected areas may be required by the inspector at time of final inspection if this notification is not given. Provide detailed instructive cut sheets of the fire penetration sealing system used to the Inspector at time of inspection. Random selective sampling by the contractor shall be observed by the Inspector.

Fire compartments shall be formed by fire barriers that are continuous from foundation through all intervening construction to the roof deck, from outside wall to outside wall, or from fire barrier to fire barrier. Draft stops of non-combustible material shall be provided in all attic areas above ceilings not to exceed 1500 sq. ft. or 50 ft. in any direction. Insulation and insulation assemblies shall meet the requirements of Section 719, International Building Code, 2006 Edition. Concealed and exposed insulation shall have a flame spread of 0-25 and a smoke developed of 0-450 in accordance with IBC 718. Travel distance to a fire extinguisher shall not exceed 75 feet for Class A, C and D fires. Travel distance shall not exceed 30 feet for Class B fires (liquids). Fifty feet allowed for Light (low) Hazard 10-B, Ordinary (moderate) Hazard 20-B and Extra (high) Hazard 80-B. Interior walls and ceilings shall have a flame spread of 0-200 and a smoke development rating of 0-450. Interior floor finishes shall be Class A or B in exits and enclosed corridors furnishing access to exits. Interior floor finishes shall be Class I or II in accordance with NFPA 253 in corridors and exits. Provide handicap accessibility in accordance with ADA-AG (Accessibility Guidelines-September 1994). Provide low level mounted exit signage in accordance with ADA-AG 4.30.1, 4.30.5 and 4.30.5 (raised character, letter size and mounting) at all required exits. Signage, where provided at permanent rooms and spaces and other areas which provide direction or information about functional spaces of the building, shall be in accordance with ADA-AG 4.30. (Raised character, letter size and mounting). Faucets shall comply with ADA-AG 4.27.4. Provide and install glass and glazing, including safety glazing in hazardous locations as defined by International Building Code, Chapter 24, Section 2406.

OPENING SCHEDULE

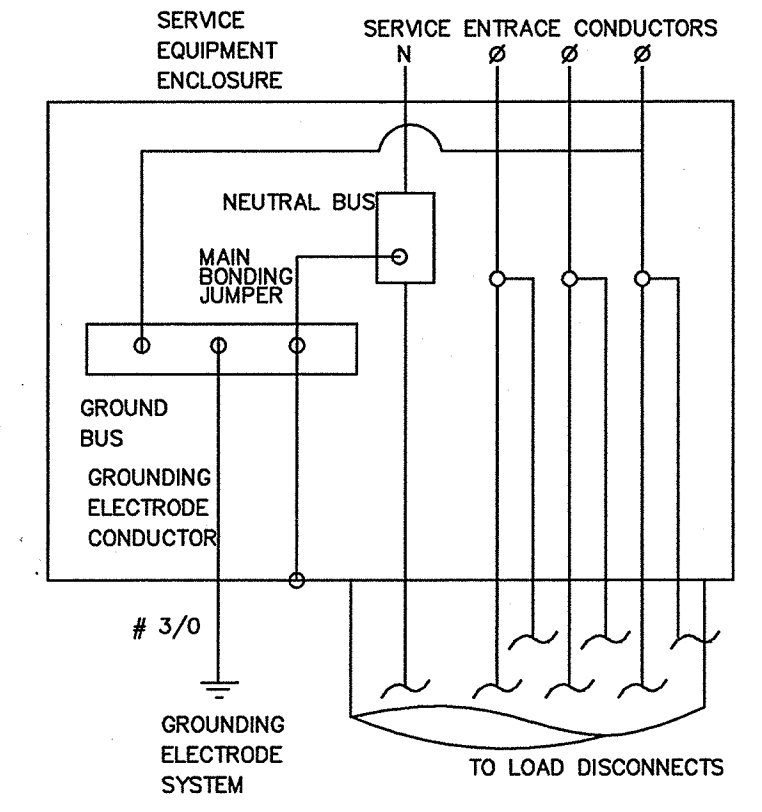
Where fire-rated doors are indicated, the rating of the frame, hardware, closer or other accessories shall be no instance be less than the rating specified for the door. Only labeled doors and frames shall be used. Installation shall be in accord with NFPA 80, Standard for Fire Doors and Windows. Hardware shall be Schlage A-Series, N37, 620 Finish. Submit Hardware Schedule for approval by Architect prior to purchase. Point Exterior Door Frames, 2 coat primer, 2 coats Exterior Latex Enamel. Point Interior Doors and Frames, 1 coat primer, 2 coats Interior Latex Enamel.

3-D6-8 Clear Anodized Alum and Insulated Low-E Safety Glass Door, Entry lock, Closer, ADA threshold and Safety Glass Storefront Glazing system, Light Grey Tint typical glass color.

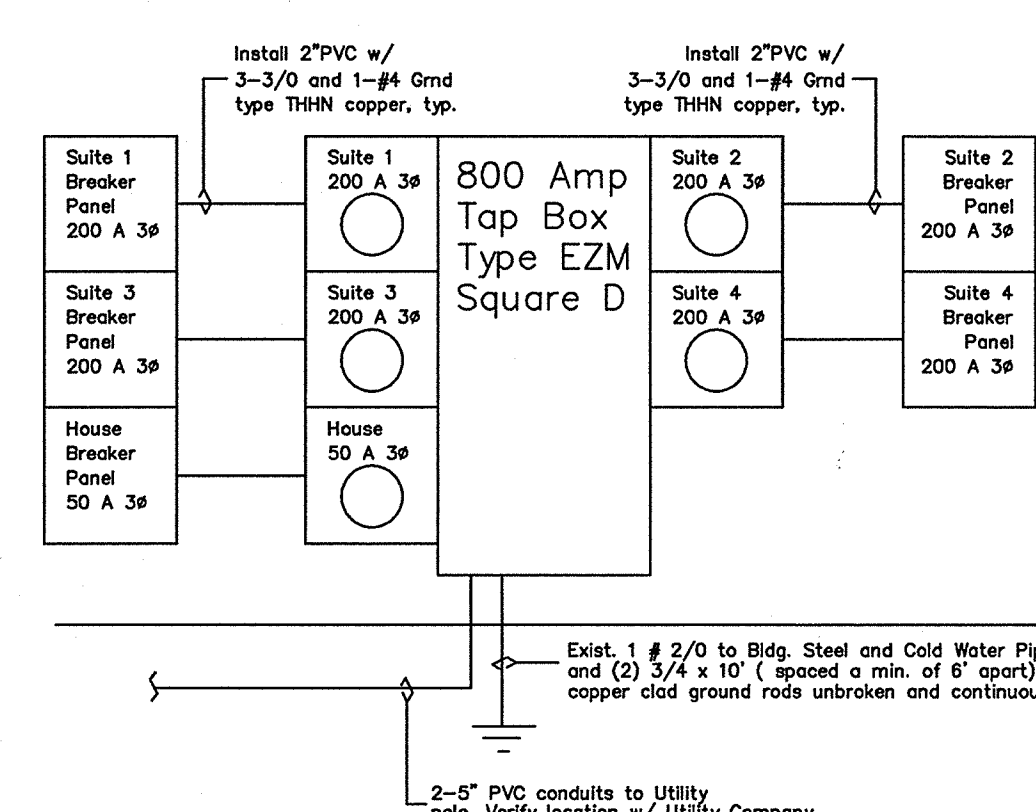
3-D6-8-3/4" Hollow Metal, Galvanized Door and Frame with Closer and Latch with Blank exterior, ADA threshold, Security Stud Hinges

3-D6-8-3/4" 45 Min Fire Rated Assembly, Hollow Metal Door and Frame, Closer and Latch

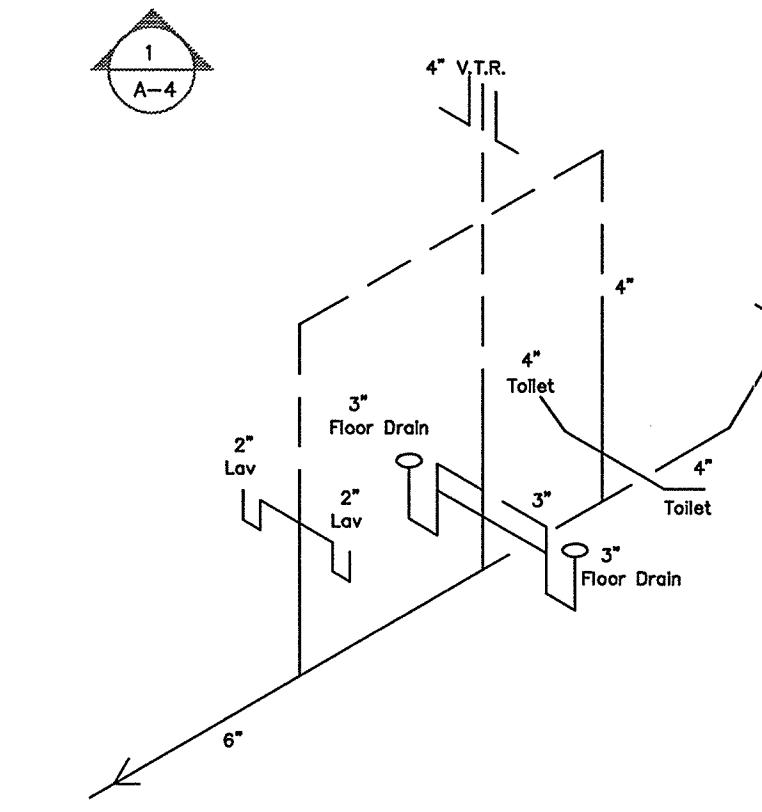
3-D6-8-3/4" Flush Solid Core Wood Door and Hollow Metal Frame, Closer and Privacy Latch



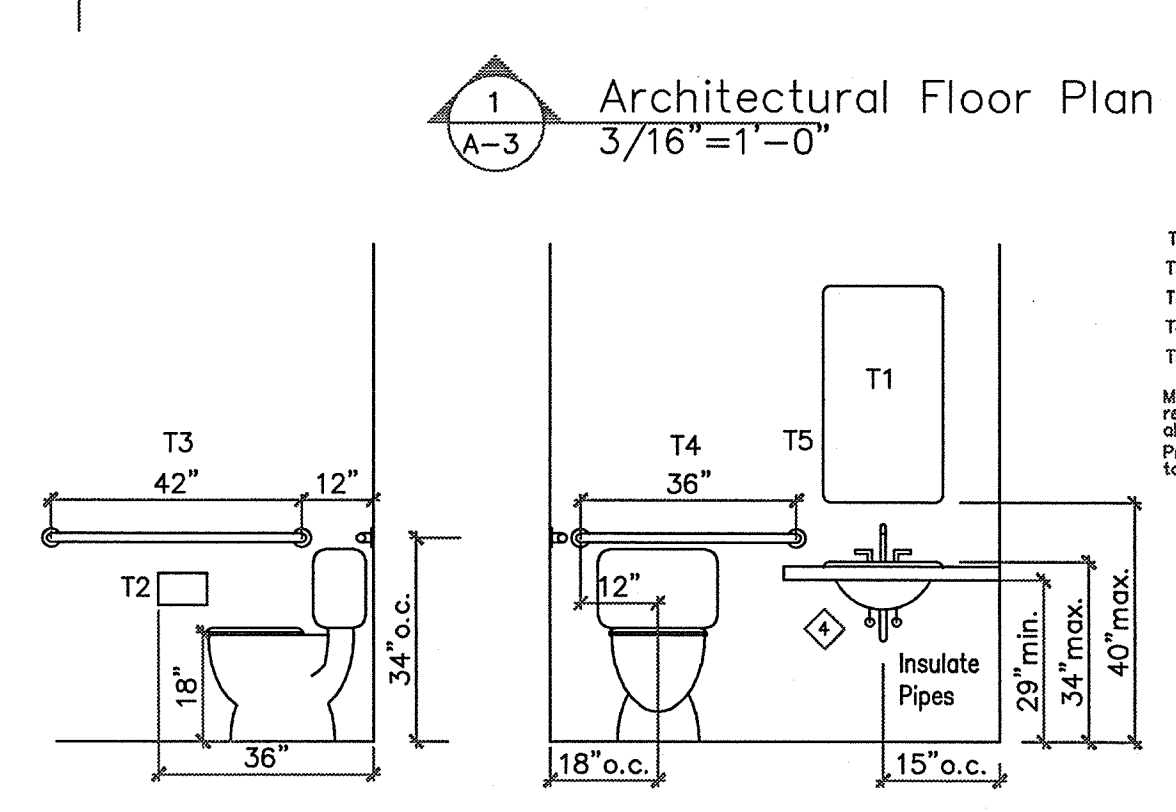
4 Grounding and Bonding Diagram Not to Scale



3 Electrical Riser Diagram Not to Scale



3 Plumbing Riser Diagram Not to Scale



2 Toilet Room Elevations N.T.S.

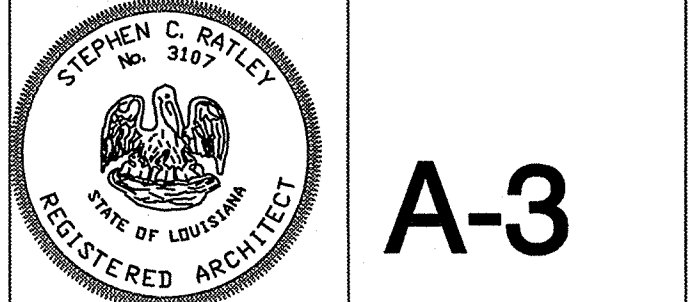
Architectural Floor Plan 3/16"=1'-0"

T1	24 x 36 Mirror	Barbrik	B-165
T2	Tissue dispenser	Barbrik	B-358
T3	Grab bar (42")	Barbrik	B-6206
T4	Grab bar (36")	Barbrik	B-6206
T5	Wall Mt Soap dispenser	Barbrik	B-45

Mount all toilet accessories at the manufacturer's recommended mounting height and in compliance with all local and national accessibility requirements. Provide treated wood blocking in walls for mounting of all toilet accessories as recommended by the manufacturer.

Shell Building Development Building One for Sugan Properties, Lc.
 La Hwy 59
 Abita Springs, Louisiana

01/30/2008 2006-25
 Construction Hwy59.dwg



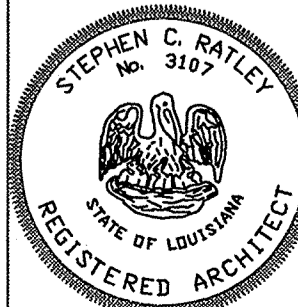
A-3

KEYNOTE SCHEDULE

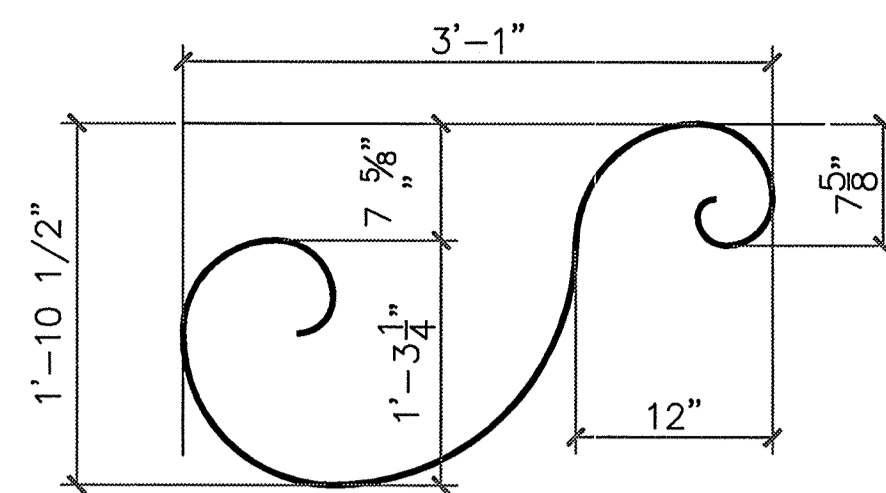
- 04200-A 88816 Split-Face Concrete Masonry Units, 8" fls. and giv. fls. to sheathing @ ±32" o.c. to edge with studs and weep holes @ ±32" o.c. at base course.
- 04200-B 31' airspace b/w vapor barrier and masonry with neovestral flashing at base course.
- 04200-C 1'-2" x 9'-2" block-out in concrete for masonry w/ 8" long #4 rebara at corners and ends of courses embedded 2" into concrete and 6" into concrete filled masonry cells.
- 05120-A Rigid Frame Metal Building Columns, Beams, Purlins and Girts. See Rigid Frame Metal Building notes.
- 05400-A Cold Formed Metal Framing, nominal 6", 16 gauge, galv. steel studs at 16" o.c. with lateral deflection L/360 designed in accord with AISI "Specification for the Design of Cold-Formed Steel Structural Members," latest edition. Install level, plumb, square and true to line and secure fasteners by welding or screw fastening. Squarely seat studs against webs of top and bottom tracks. Install temporary bracing and horizontal bracing in stud system spaced in rows not more than 72" apart. Install misc. connections, accessories, and supplementary framing. Isolate framing from building structure using slide clips or deflection track to prevent transfer of vertical loads while providing lateral support.
- 05400-B Cold Formed Metal Framing, nominal 3-5/8", 16 gauge, galv. steel studs at 16" o.c. (See notes above)
- 05400-C Cold Formed Metal Framing, nominal 3-5/8", 16 gauge, galv. steel clip angles attached b/w each stud to steel header beam with mechanical fasteners.
- 05400-D Cold Formed Metal Framing, nominal 12" deep 16 gauge, double joist box beam header over storefront and soffit.
- 05500-A Custom Metal Fabrication: Decorative bent steel bracket 1/2" x 2" S" shaped as indicated and painted.
- 05500-B Custom Metal Fabrication: 1x2 steel ceiling frame shaped as indicated and painted.
- 07130-A Wall Vapor Barrier: TYVEK building wrap over sheathing installed in strict accordance with manuf's. written instructions.
- 07130-B Flashing over exterior doors and windows: Neovestral applied underneath TYVEK and over lintels and head of aluminum sections. Extend beyond width over frame to prevent condensation from entering.
- 07210-A Wall Insulation: R-13 Scrim faced Fiberglas per ASTM E-84 and NFPA 255 by Metal Building mfg'r.
- 07210-B Roof Insulation: R-19 Scrim faced Fiberglas per ASTM E-84 and NFPA 255 by Metal Building mfg'r.
- 07480-A 2"x4"x8" USG Durock Exterior Cement Board Sheathing fastened to studs with galv metal screws at 12" o.c.
- 07610-A 26 ga Standing Seam Galv. Roof panels mechanically fasten to Awning frame with flashing into stucco plaster. Color selected by Owner from standards available.
- 07620-A 26 ga Galv. Sheet Metal Parapet Cap installed over plaster stucco Cornice and metal building wall panels continuous per NRCA instructions. Color selected by Owner from standard available.
- 07920-A Joint Sealants: Provide and install elastomeric joint sealants and closed cell backer rods in accord with manufacturer's written instructions for material compatibility for a complete weather tight seal complying with ASTM C 1193.
- 09210-A 3-Coat Portland Cement Plaster Stucco system over galv. expanded metal lath mechanically fastened to sheathing with pre-formed galv. metal expansion joints as located on drawings. Cash joints after installation.
- 09210-B Plaster Cornice: Formed from portland cement plaster stucco system material and shaped as indicated on drawing.

**Shell Building Development
Building One
for Sugan Properties, Ll.c.**
La Hwy 59
Abita Springs, Louisiana

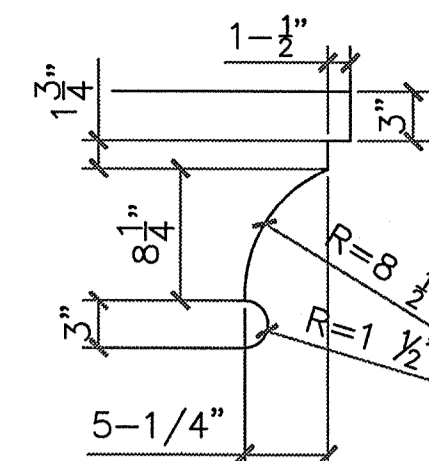
01/30/2008 2006-25
Construction Hwy59.dwg



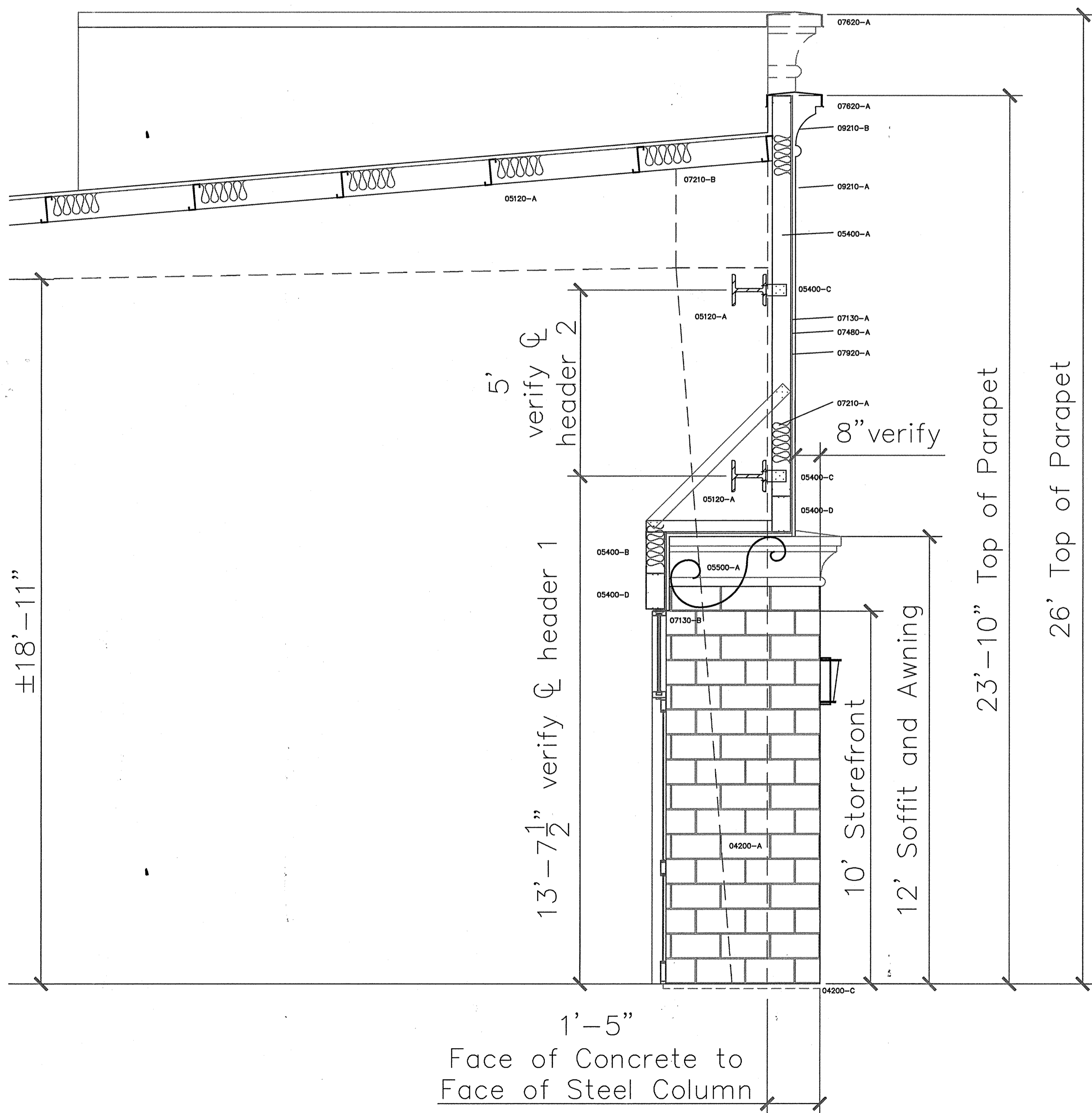
A-5



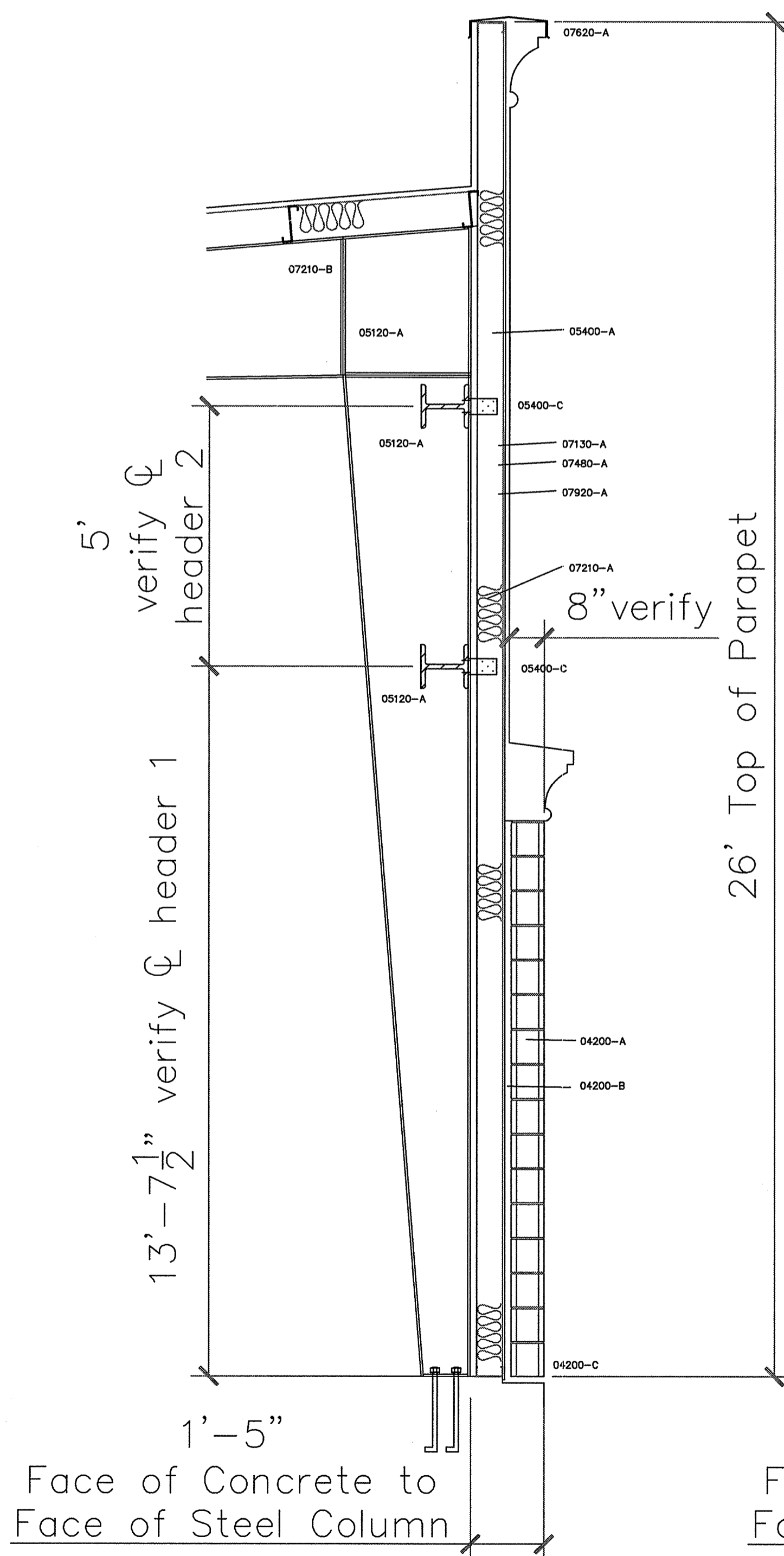
5
A-5
Bracket Dimension Detail
1/2"=1'-0"



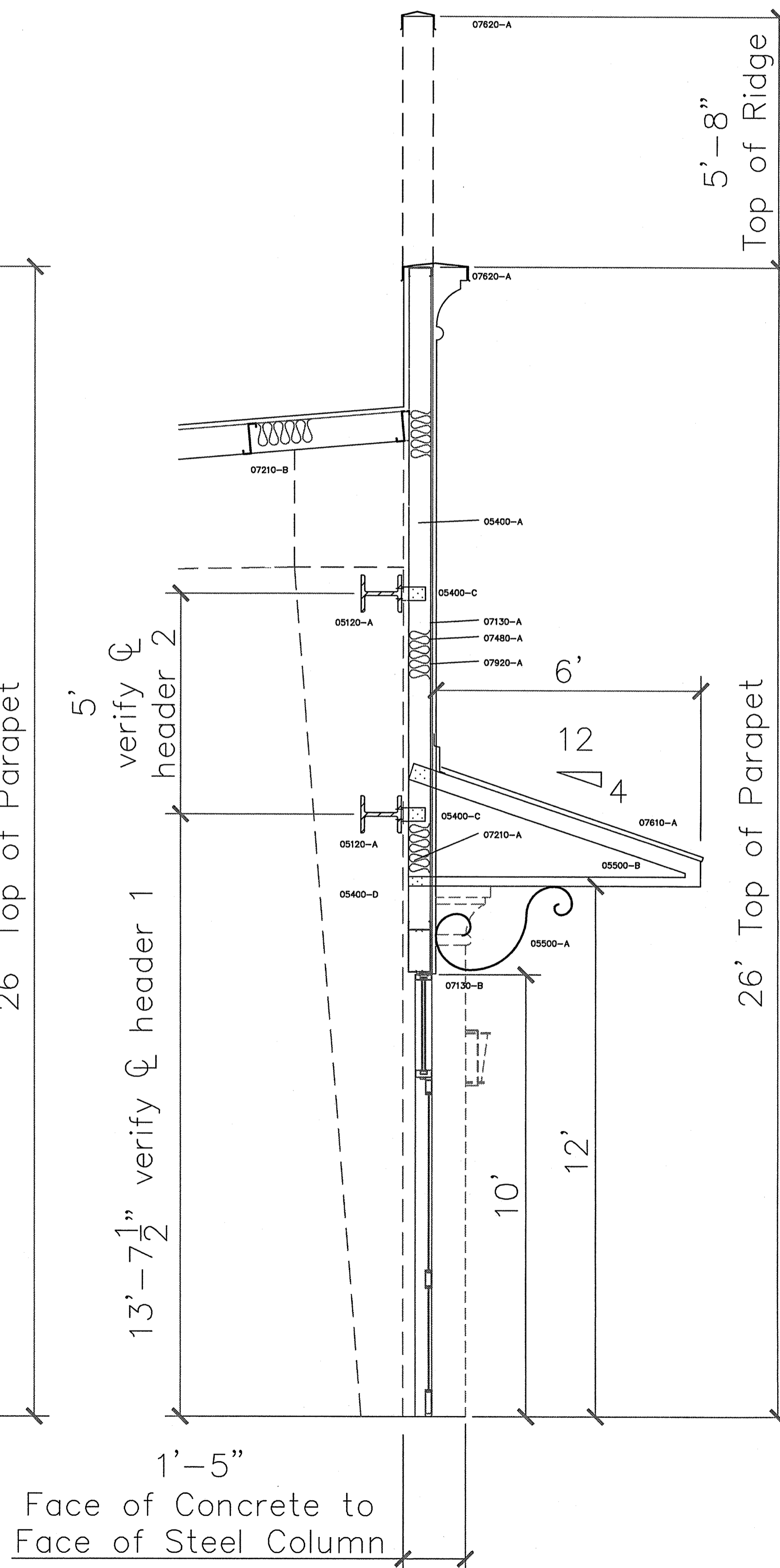
4
A-5
Cornice Dimension Detail
1/2"=1'-0"



3
A-5
Wall Section
1/2"=1'-0"



2
A-5
Wall Section
1/2"=1'-0"



1
A-5
Wall Section
1/2"=1'-0"