

24600 N. INDUSTRIAL DRIVE
FARMINGTON HILLS, MICHIGAN

HI-TECH FOR LEASE
14,748 Square Feet Available



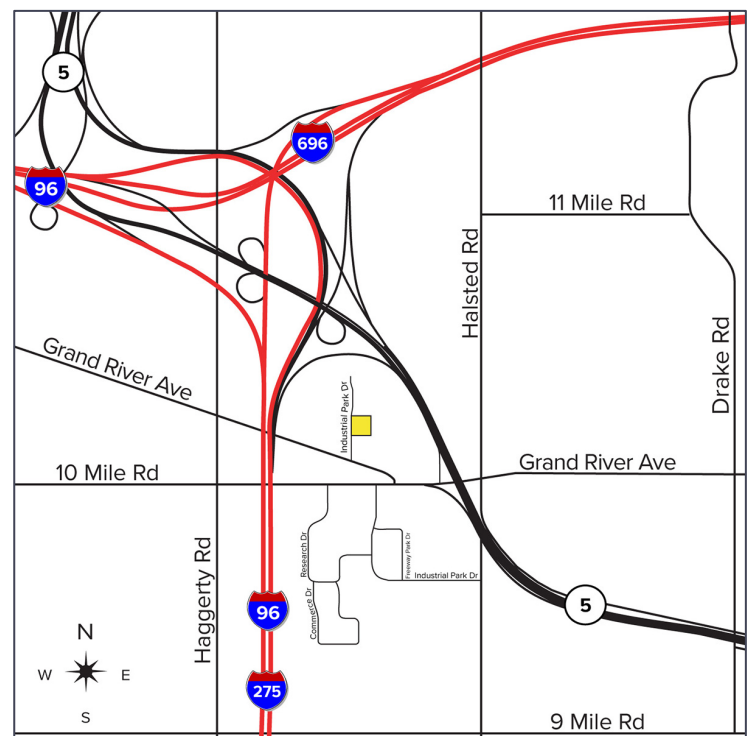
**SIGNATURE
ASSOCIATES**
KNOW SIGNATURE | KNOW RESULTS

PRIME LOCATION



PROPERTY FEATURES

- 14,748 square feet available
- 8,820 square feet office
- 18' clear height
- (1) 12' x 14' grade level door, (1) truckwell
- 1000 amps, 208 volts, 3-phase power
- Easy access to I-275, I-696, and M-5
- Beautiful office/engineering areas with high ceilings, perfect for many hi-tech applications
- New parking lot installed summer 2026
- Lease Rate: \$9.95/sq. ft. NNN



For more information, please contact:

GARY SALLEN
(248) 948 0105
gsallen@signatureassociates.com

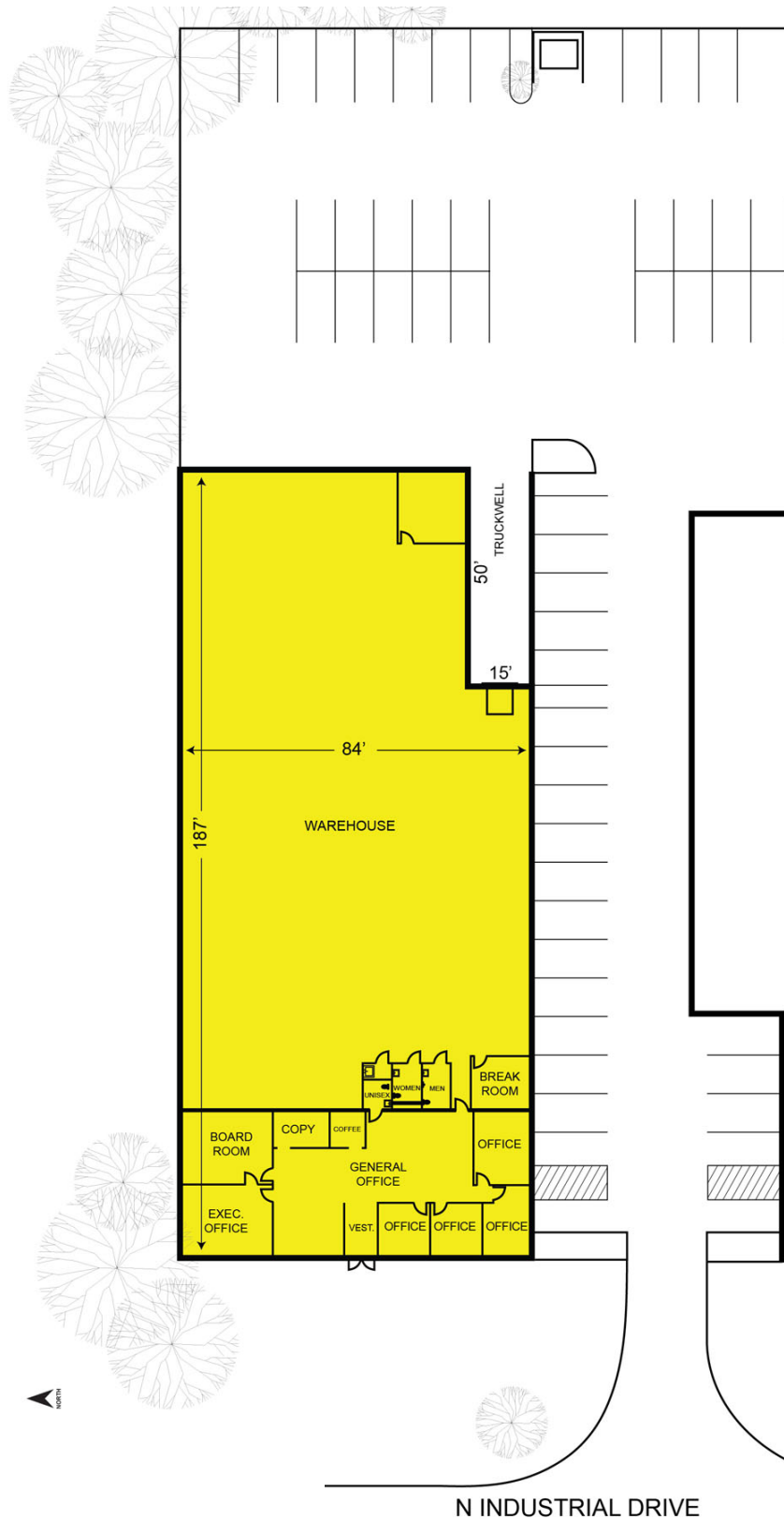
SIGNATURE ASSOCIATES
One Towne Square, Suite 1200
Southfield, MI 48076
www.signatureassociates.com

24600 N. Industrial Drive – Farmington Hills, Michigan

Hi-Tech For Lease

14,748
Square Feet
AVAILABLE

Site Plan



For more information, please contact:

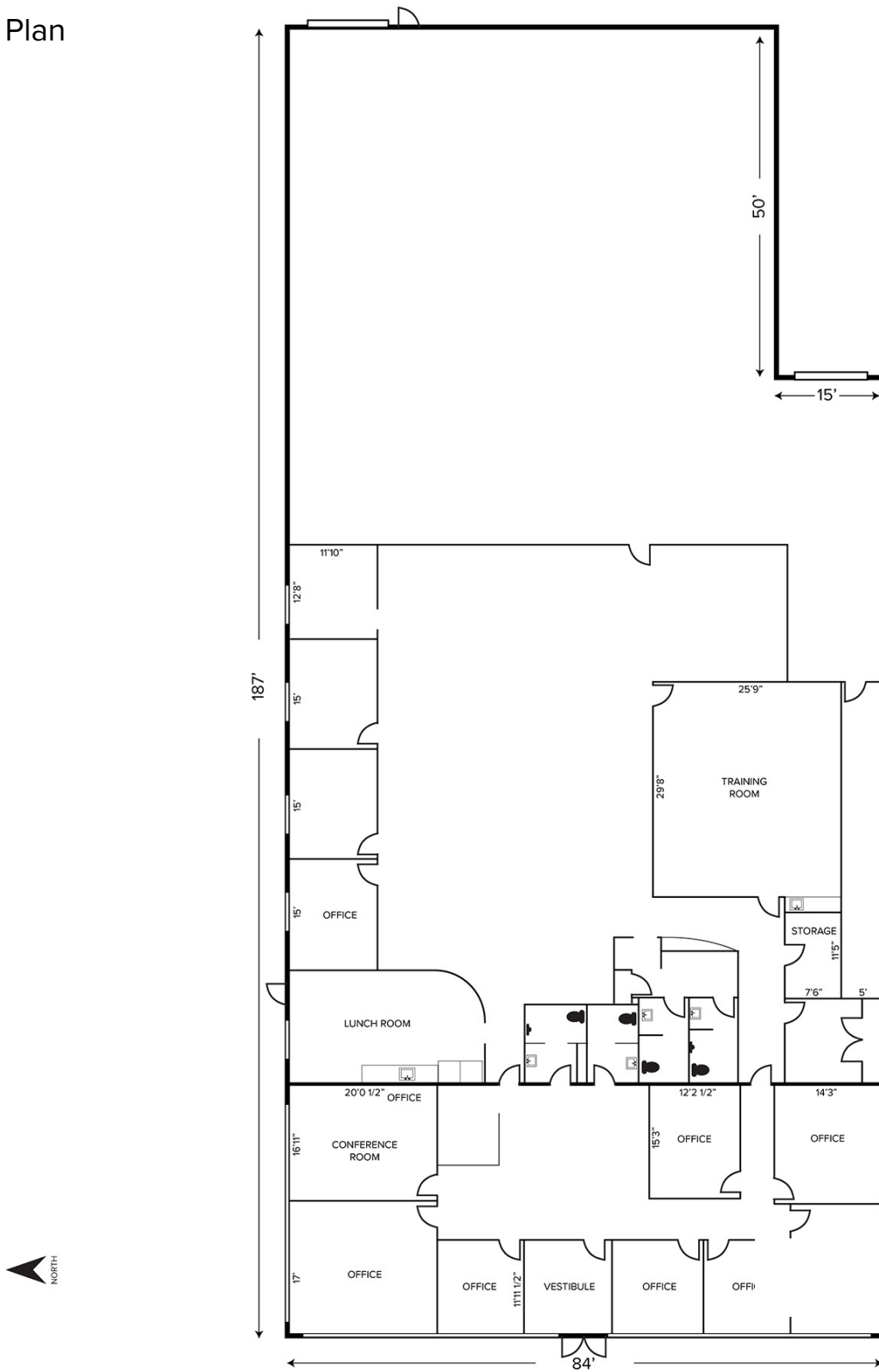
GARY SALLEN
(248) 948 0105
gsallen@signatureassociates.com

SIGNATURE ASSOCIATES
One Towne Square, Suite 1200
Southfield, MI 48076
www.signatureassociates.com

24600 N. Industrial Drive – Farmington Hills, Michigan Hi-Tech For Lease

14,748
Square Feet
AVAILABLE

Floor Plan



For more information, please contact:

GARY SALLEN
(248) 948 0105
gsallen@signatureassociates.com

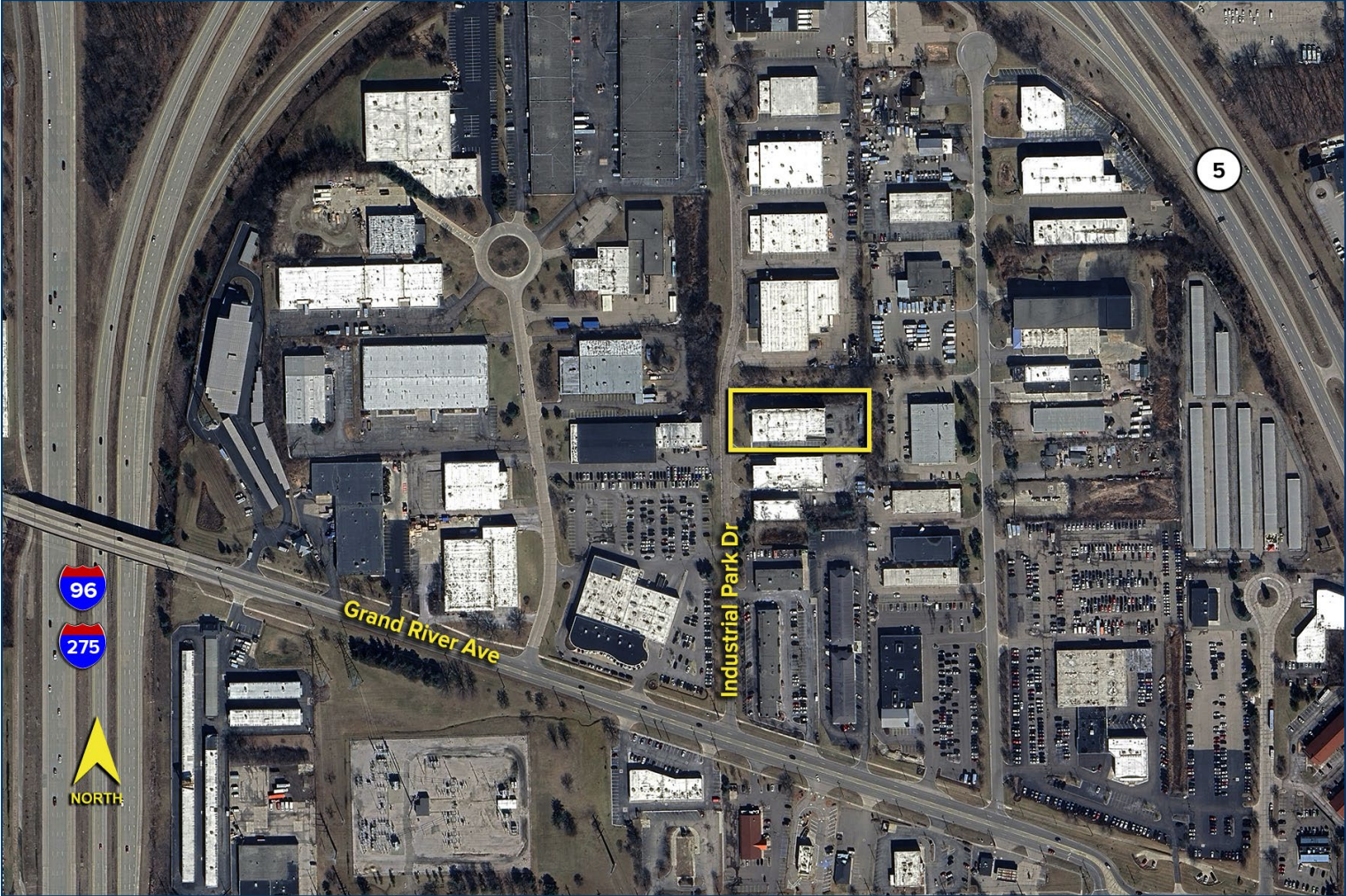
SIGNATURE ASSOCIATES
One Towne Square, Suite 1200
Southfield, MI 48076
www.signatureassociates.com

24600 N. Industrial Drive – Farmington Hills, Michigan

Hi-Tech For Lease

14,748
Square Feet
AVAILABLE

Aerial



For more information, please contact:
GARY SALLEN
(248) 948 0105
gsallen@signatureassociates.com

SIGNATURE ASSOCIATES
One Towne Square, Suite 1200
Southfield, MI 48076
www.signatureassociates.com

Information is subject to verification and no liability for errors or omissions is assumed. Price is subject to change and listing withdrawal.