

The Colliers logo, featuring the word "Colliers" in a white serif font inside a blue rounded rectangle with a yellow and red horizontal stripe at the bottom.A photograph of a modern, white, two-story office building with large windows and a prominent entrance. The building is situated on a city street with parked cars and trees. The sky is clear and blue. The building has a sign that says "MARINE BUILDING" above the entrance.

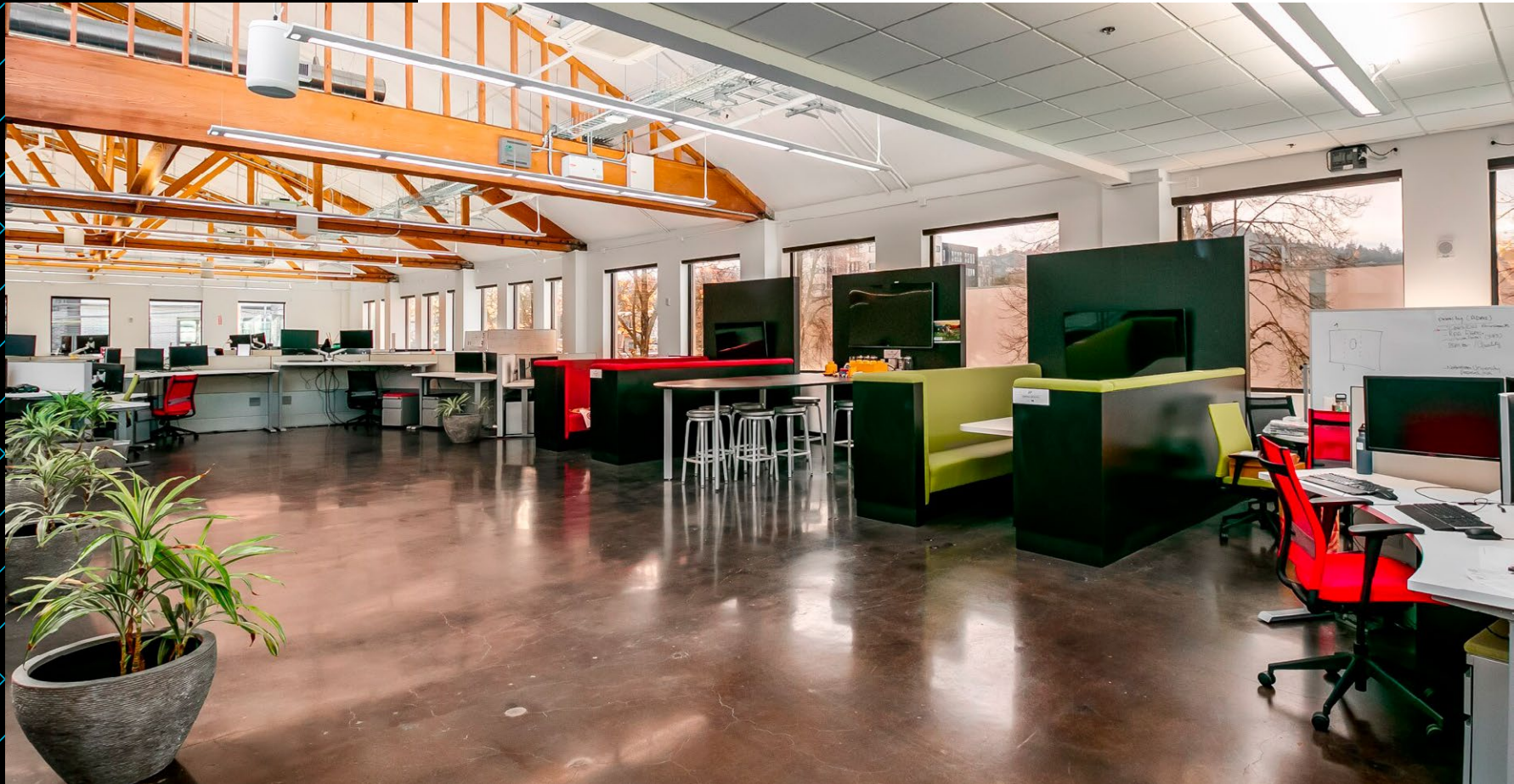
THE MARINE BUILDING & ANNEX

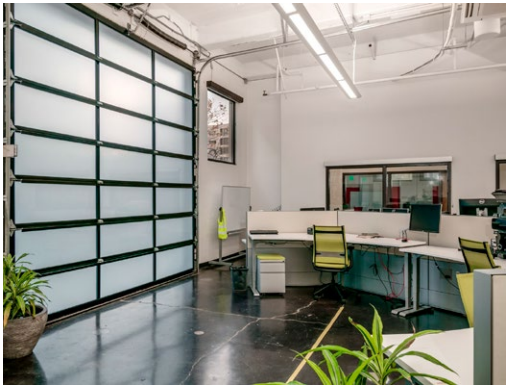
1732 NW QUIMBY ST | 40,000 SF OFFICE | 1431 NW 17TH AVE | 20,000 SF ANNEX

FOR LEASE
20,000 SF WAREHOUSE
40,000 SF OFFICE

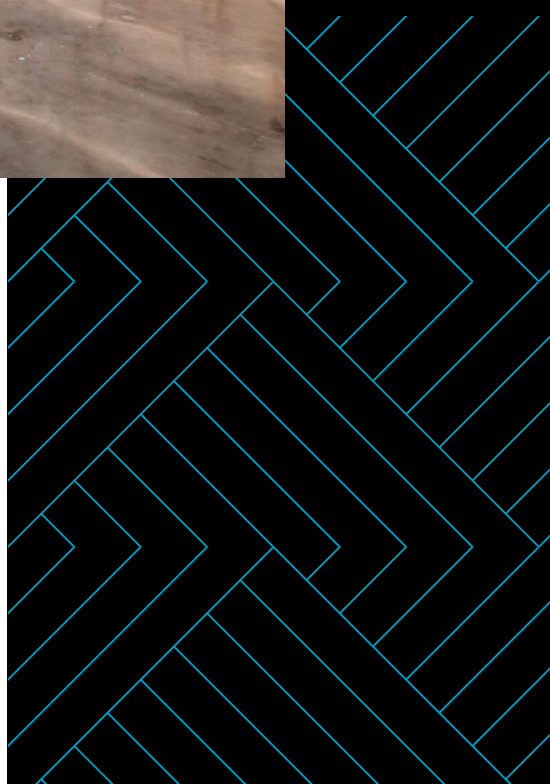
WAREHOUSE & OFFICE

- ✓ Major renovation with extensive upgrades completed in 2015
- ✓ Former Jaguar Land Rover automotive repair and technology facility
- ✓ Flexible CM3 zoning allowing most commercial and industrial uses
- ✓ Fully conditioned space throughout
- ✓ 400 AMPs of power service
- ✓ 15+ ft ceiling heights with abundant natural light
- ✓ Two glass overhead doors
- ✓ Four private, fully enclosed workshops
- ✓ Two automobile lifts
- ✓ Four ADA-compliant restrooms
- ✓ On-site parking

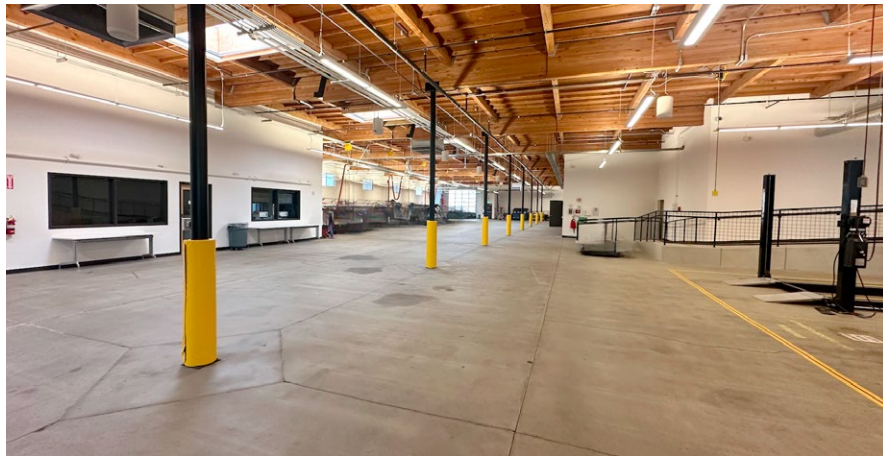
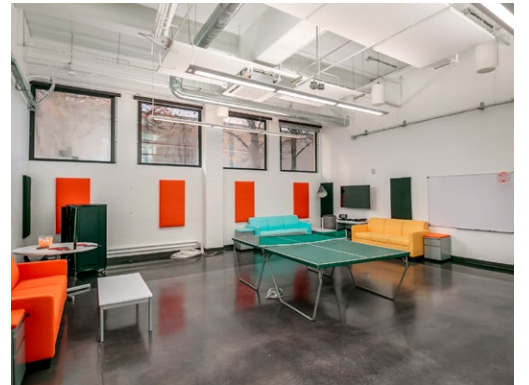




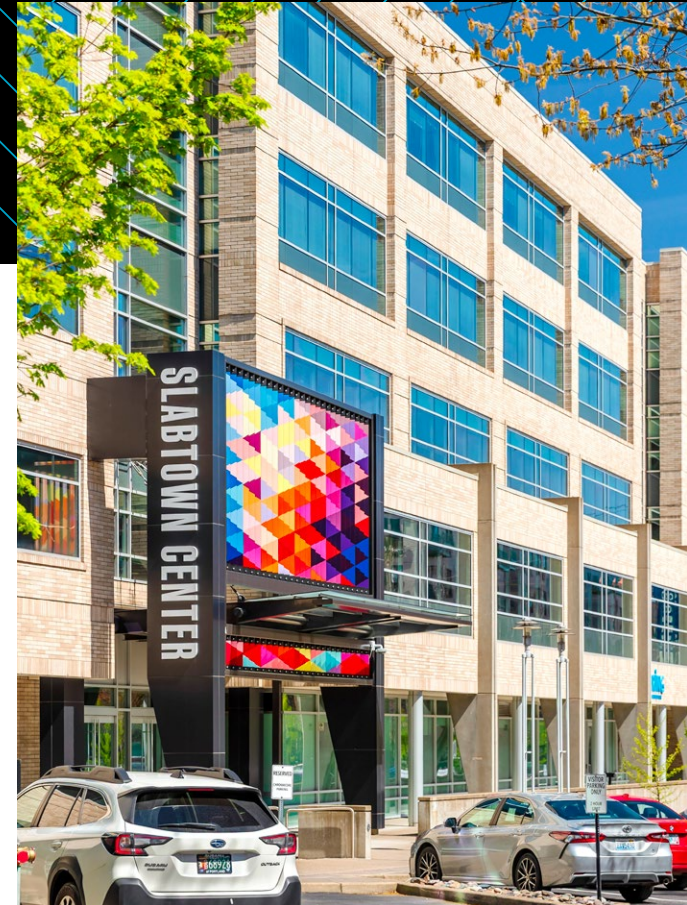
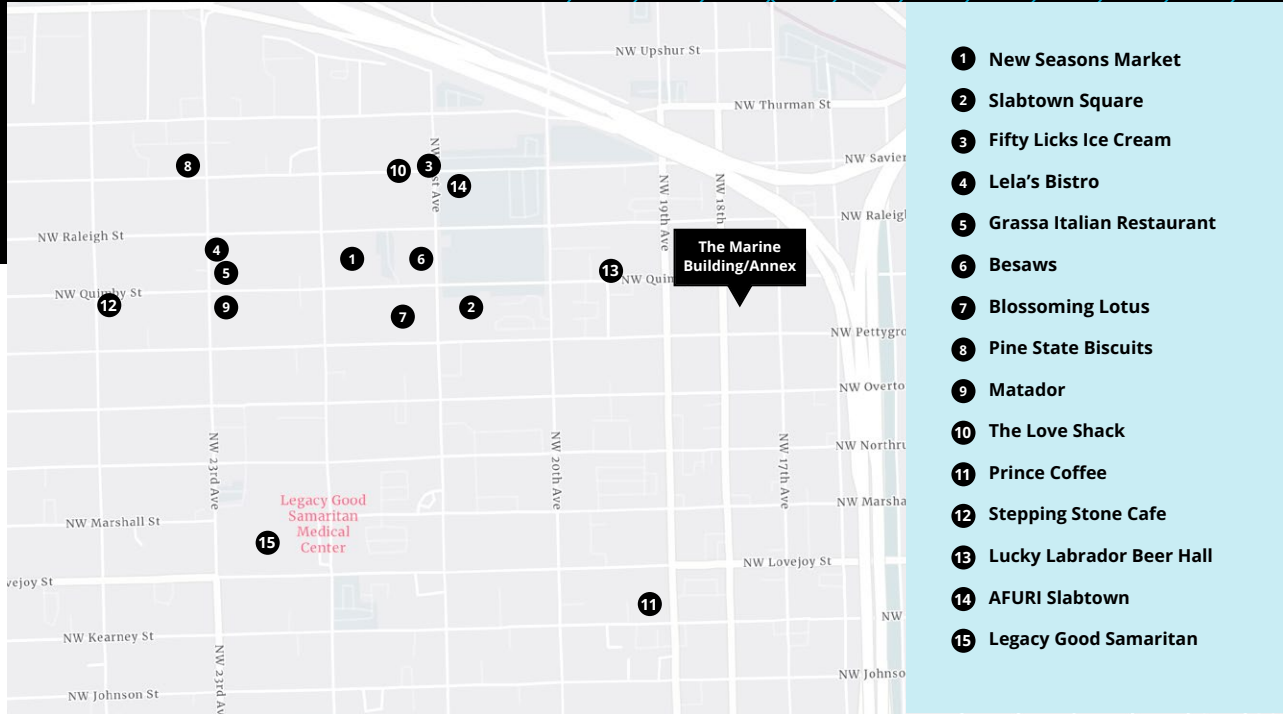
MAJOR 2015 RENOVATIONS



LARGE 13' HIGH CEILINGS



LOCAL AMENITIES



PORTLAND'S INNOVATION CORRIDOR

A Global Hub Built for
Creativity and Growth



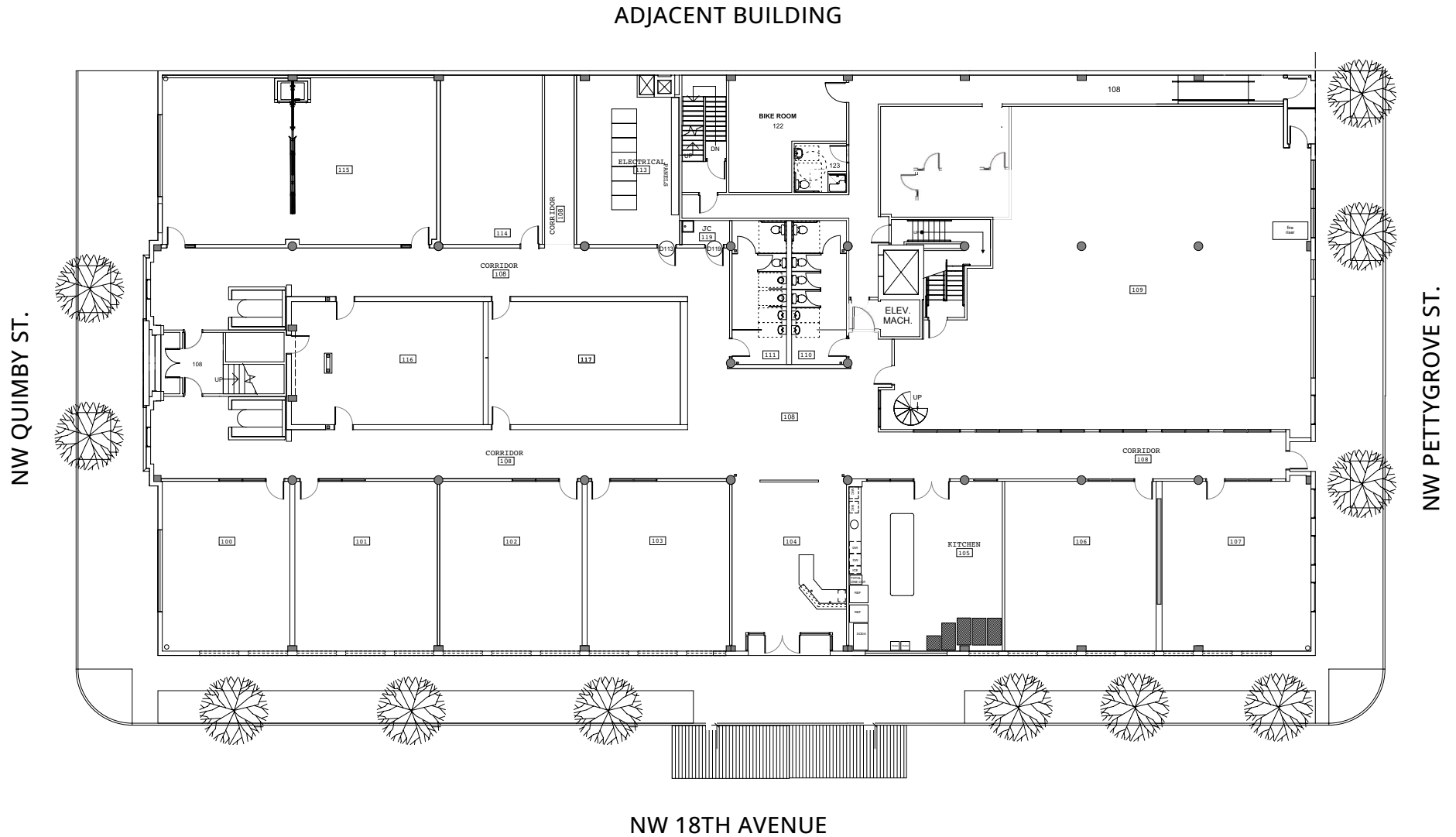
Portland has become a magnet for the world's most creative and active brands. Home to the North American headquarters of adidas and On Running, the global campuses of Nike and Columbia Sportswear, and the worldwide HQ of iconic agencies like Wieden+Kennedy, Portland consistently attracts companies that value design, culture, and quality of life.

Add Keen Footwear, Tillamook, Laika Studios, and Stumptown Coffee to the mix, and you have a city that punches well above its weight as a destination for talent and brand-building.

The Marine Building sits at the center of this ecosystem—in Slabtown, one of Portland's fastest-growing neighborhoods, steps from the Pearl District and surrounded by the kind of restaurants, coffee shops, and amenities that top talent expects.

MARINE BUILDING FLOOR PLAN: 1ST FLOOR

- Reception
- Open Office
- Incubator Suites
- Large Conference Room
- Creativity Suite
- Media Suite
- Kitchen

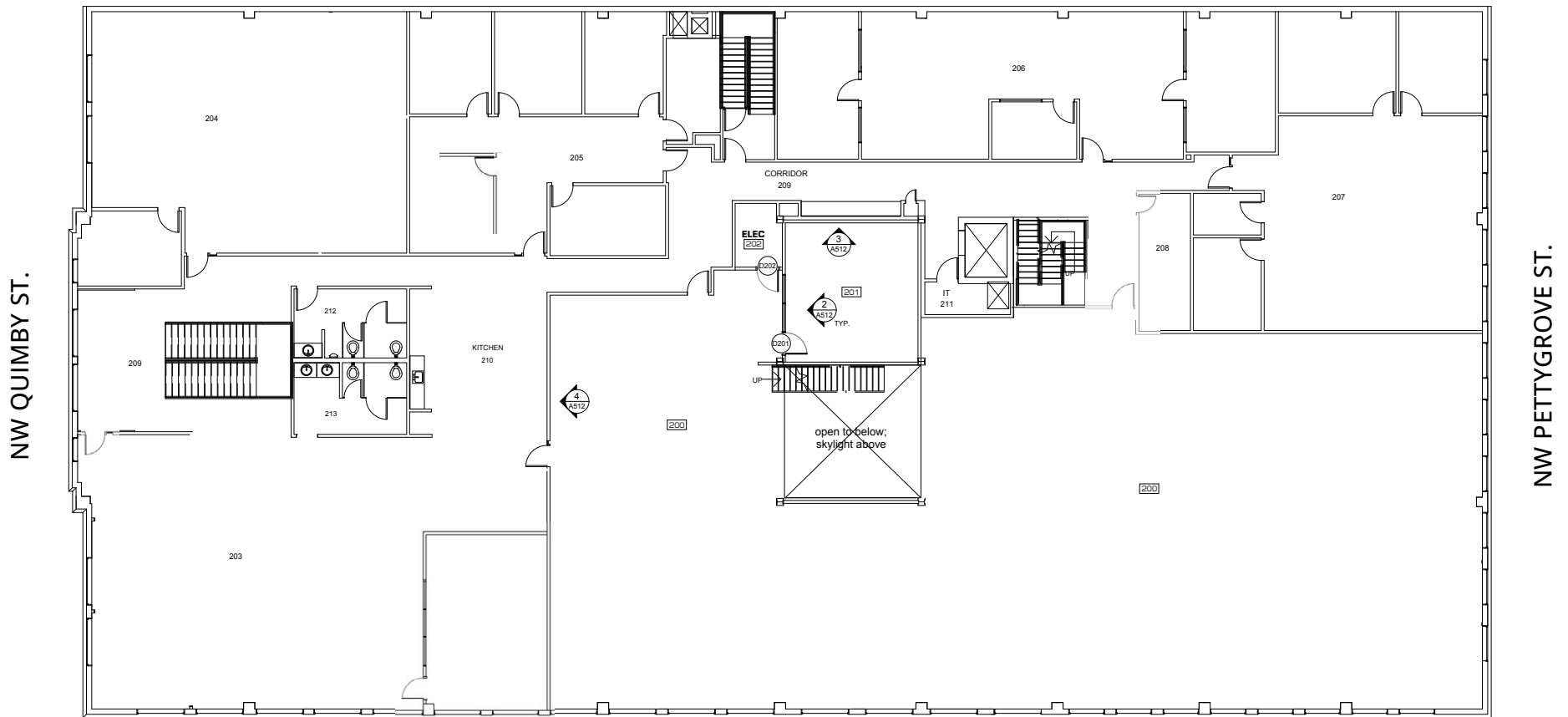


MARINE BUILDING FLOOR PLAN: 2ND FLOOR

- Open Office
- Conference Room



ADJACENT BUILDING



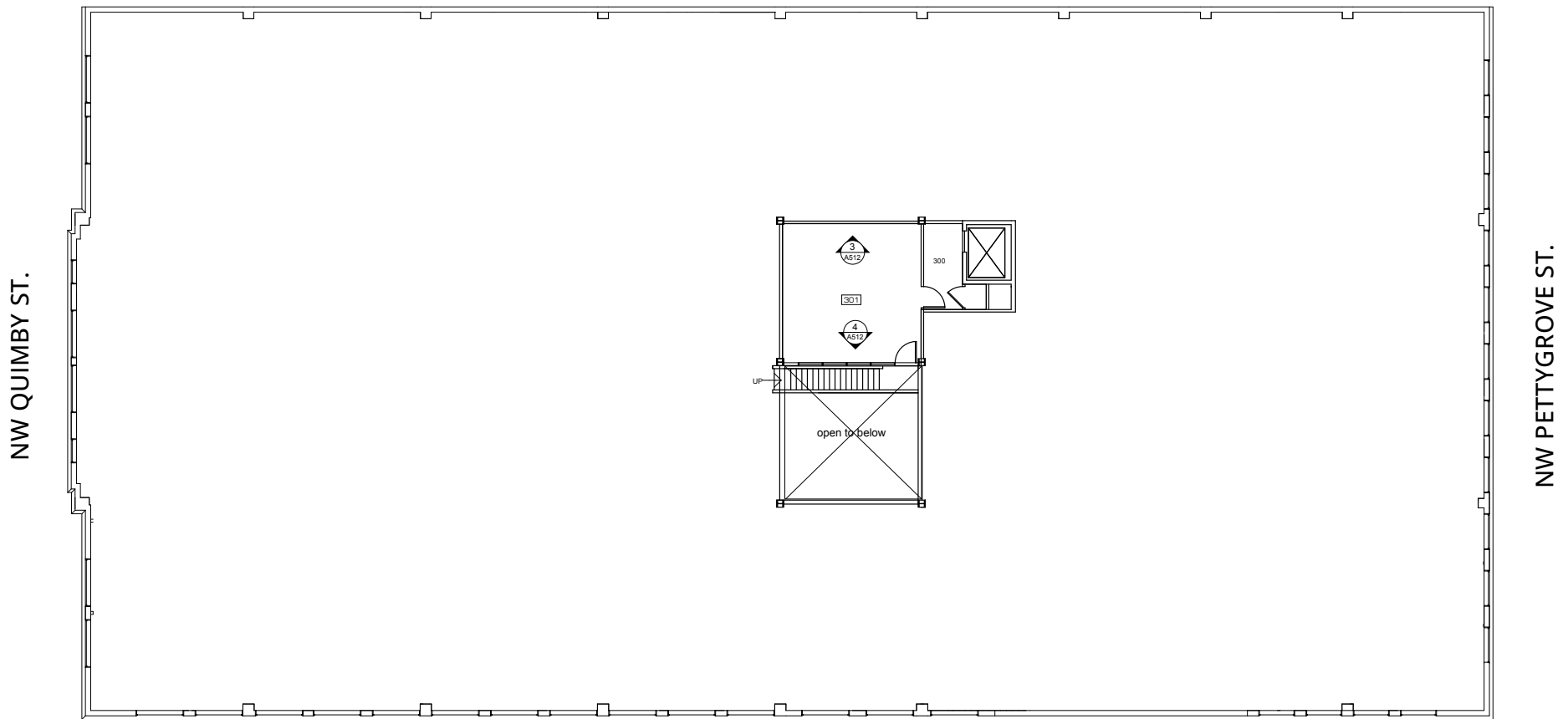
NW 18TH AVENUE

MARINE BUILDING FLOOR PLAN: 3RD FLOOR

- Flex Space
- Conference Space



ADJACENT BUILDING



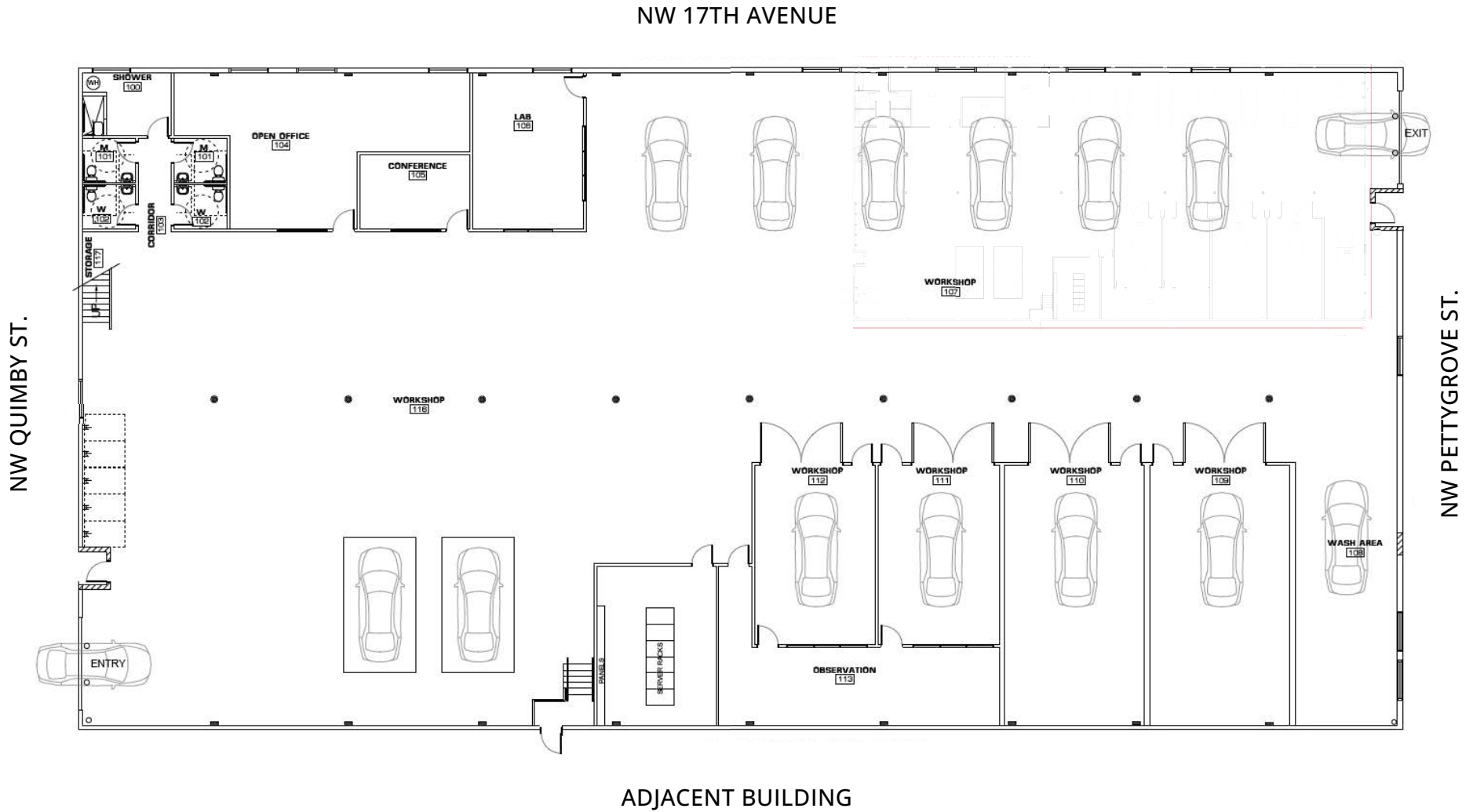
NW 18TH AVENUE

NW QUIMBY ST.

NW PETTYGROVE ST.

ANNEX FLOOR PLAN

- Single-story
- 200' x 100' footprint with open warehouse
- 4 Workshops
- Open Office
- Conference Room
- Lab
- Wash Area
- Observation Room



THE MARINE BUILDING & ANNEX

1732 NW QUIMBY ST | 1431 NW 17TH AVE | PORTLAND, OR

Chris Johnson

Executive Vice President | Portland
+1 503 542 5884
chris.johnson@colliers.com

Brett Johnson

Vice President | Portland
+1 503 499 0067
brett.johnson@colliers.com

Jamison Shields

Associate | Portland
+1 503 265 5065
jamison.shields@colliers.com



Disclaimer: This document has been prepared by Colliers for advertising and general information only. Colliers makes no guarantees, representations or warranties of any kind, expressed or implied, regarding the information including, but not limited to, warranties of content, accuracy and reliability. Any interested party should undertake their own inquiries as to the accuracy of the information. Colliers excludes unequivocally all inferred or implied terms, conditions and warranties arising out of this document and excludes all liability for loss and damages arising there from. This publication is the copyrighted property of Colliers and/or its licensor(s). ©2026. All rights reserved.