

Built out Dental Office available for Sublease

1355 South Higley Road Bldg. 5 Ste 114, Gilbert, AZ 85296



- Built out Dental Office available for Sublease
- Approximately 2,200 SF
- Five Operatories
- Zoned C-C - City of Gilbert
- Built in 2006
- Located in Higley Park Professional Village Condominium Association
- Adjacent to Loop 202 Freeway
- Close to retail and business amenities
- Ample parking for tenants and visitors
- Convenient access to major highways

www.menlocre.com/property

Mark Haslip MBA | SIOR | CCIM

Vice President

480.659.1777

mark@menlocre.com

P: 480.659.1777 • F: 480.535.5854

www.menlocre.com

Built out Dental Office available for Sublease

1355 South Higley Road Bldg. 5 Ste 114, Gilbert, AZ 85296

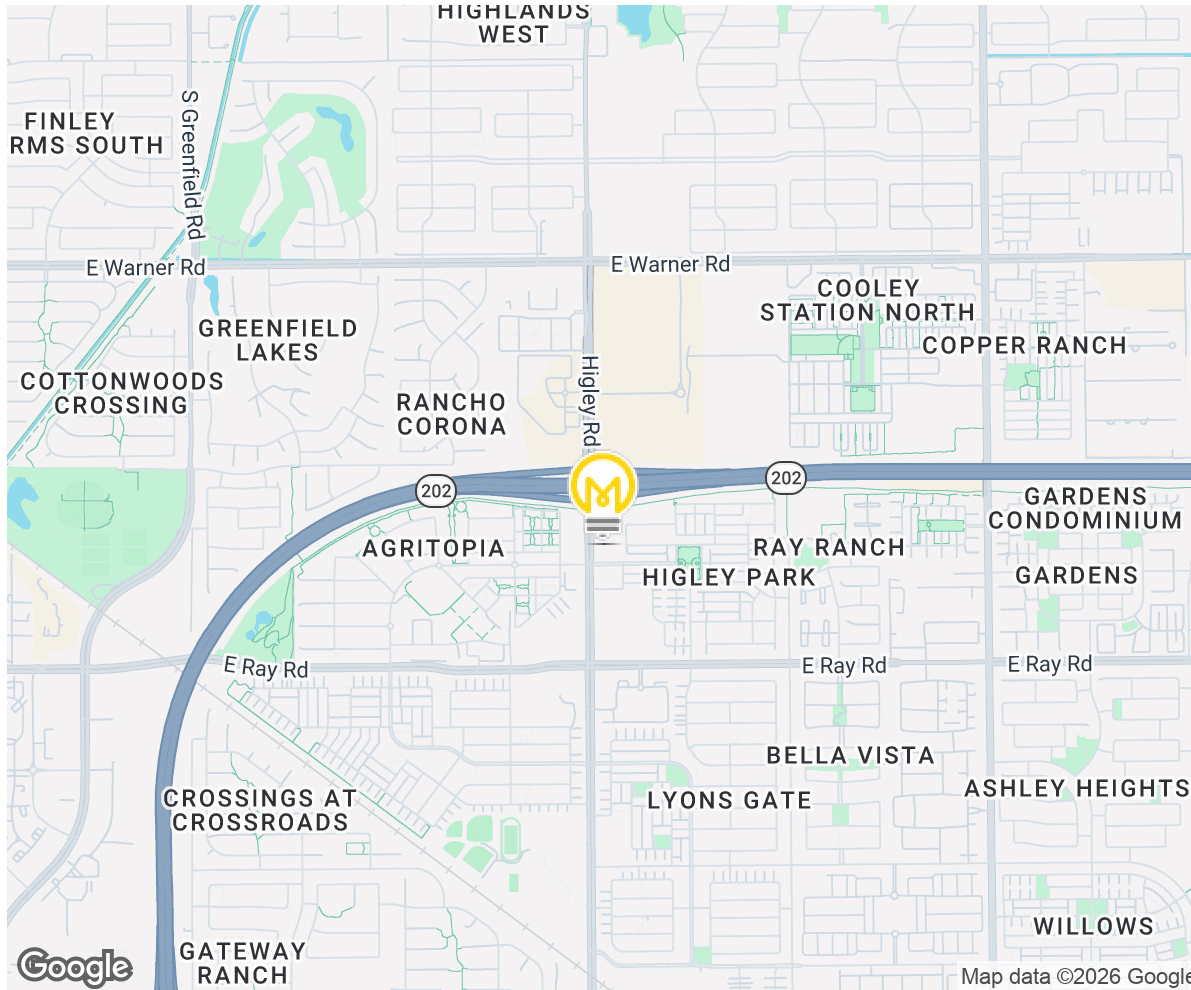
Additional Photos



Built out Dental Office available for Sublease

1355 South Higley Road Bldg. 5 Ste 114, Gilbert, AZ 85296

Site Details

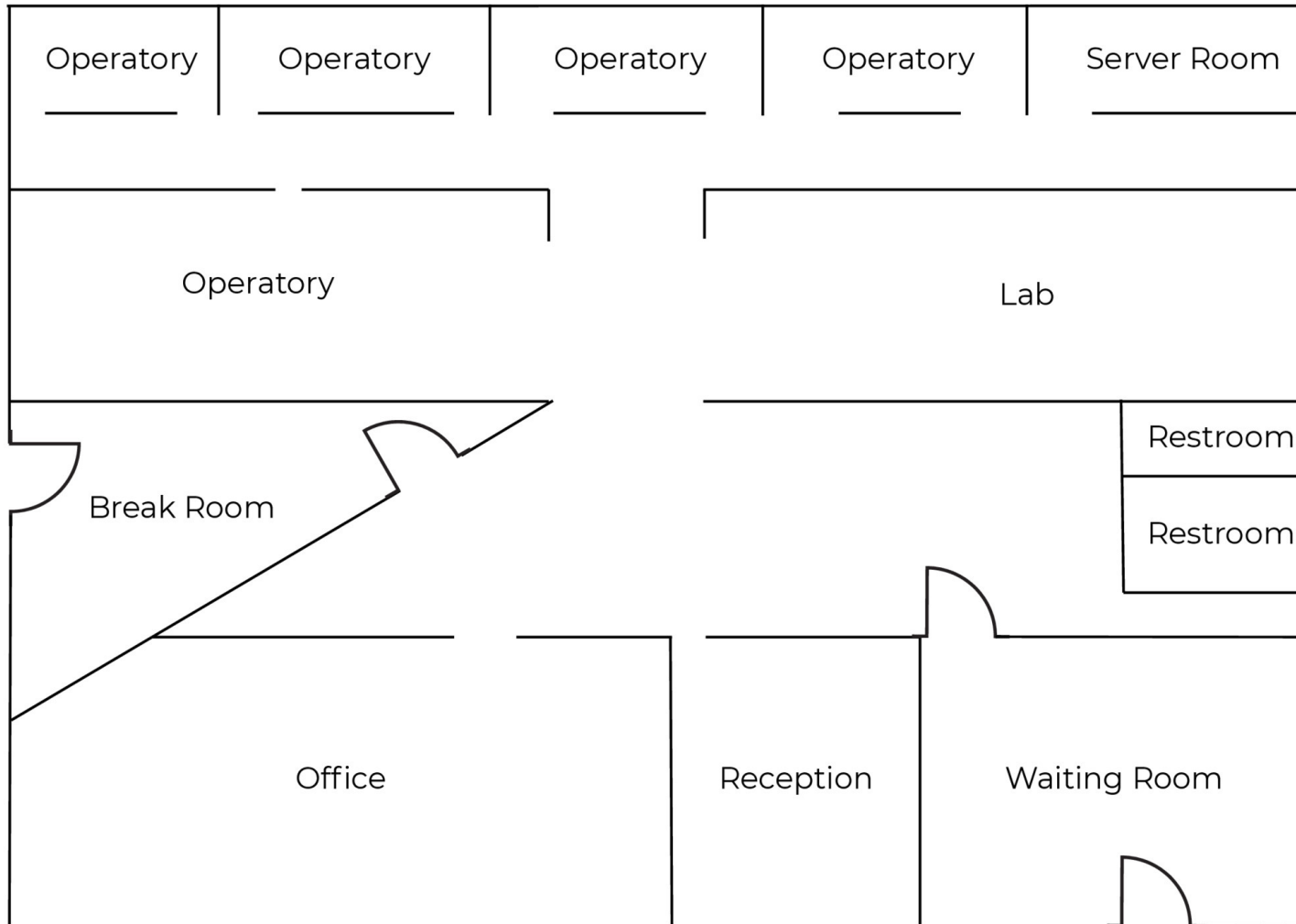


DEMOGRAPHICS	0.3 Miles	0.5 Miles	1 Mile
Total Households:	395	1,424	6,196
Total Population:	1,265	4,506	19,428
Average HH Income:	\$138,628	\$139,424	\$143,216

Built out Dental Office available for Sublease

1355 South Higley Road Bldg. 5 Ste 114, Gilbert, AZ 85296

Floor Plans



**Floor plan not to scale*