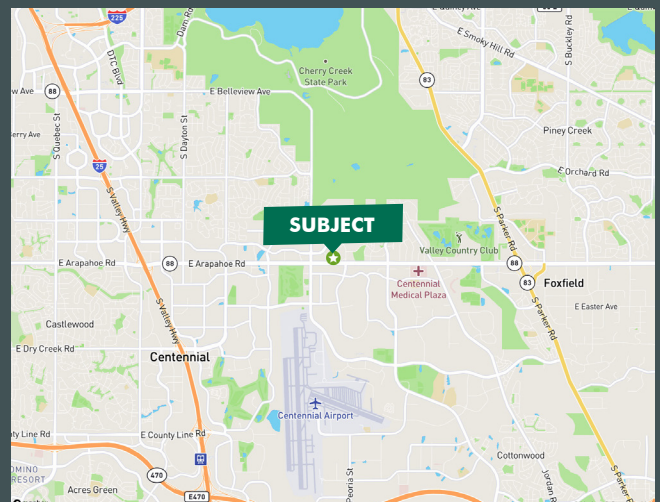


Arapahoe Corporate Park

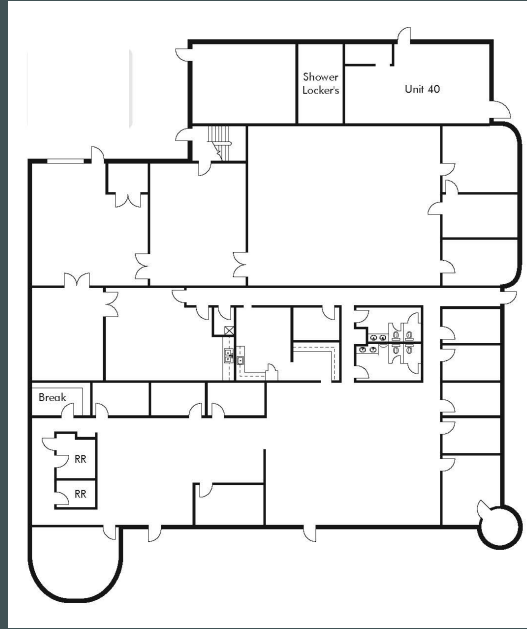
12503 E. Euclid Drive, Centennial, CO 80111



SF AVAILABLE	13,558 SF
SUBLEASE TERM	Through 11/30/26, longer term possible
LOADING	1 drive-in door
CLEAR HEIGHT	12' - 13'
SPRINKLERS	Yes
YEAR BUILT	1986
LEASE RATE	Contact broker
OPEX	\$6.67/SF (2024)
AMENITIES	<ul style="list-style-type: none">• Great access to nearby retail amenities• Visibility from Arapahoe Road• Good access to highways



Floor Plan



Amenities Map



Contact Us

Matt Kawulok
Vice President
+1 720 528 6353
matt.kawulok@cbre.com

© 2024 CBRE, Inc. All rights reserved. This information has been obtained from sources believed reliable, but has not been verified for accuracy or completeness. You should conduct a careful, independent investigation of the property and verify all information. Any reliance on this information is solely at your own risk. CBRE and the CBRE logo are service marks of CBRE, Inc. All other marks displayed on this document are the property of their respective owners, and the use of such logos does not imply any affiliation with or endorsement of CBRE. Photos herein are the property of their respective owners. Use of these images without the express written consent of the owner is prohibited.