

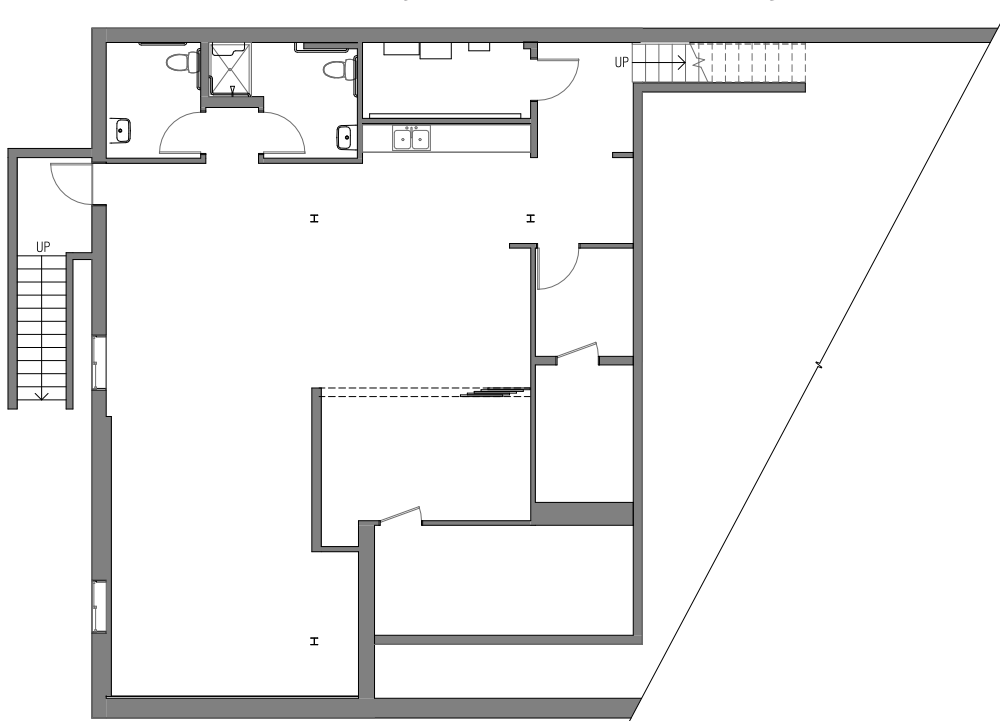
# Office / Service Retail Space for Lease

AVAILABLE: 3,794 – 9,397 RSF | CAPITOL HILL LOCATION

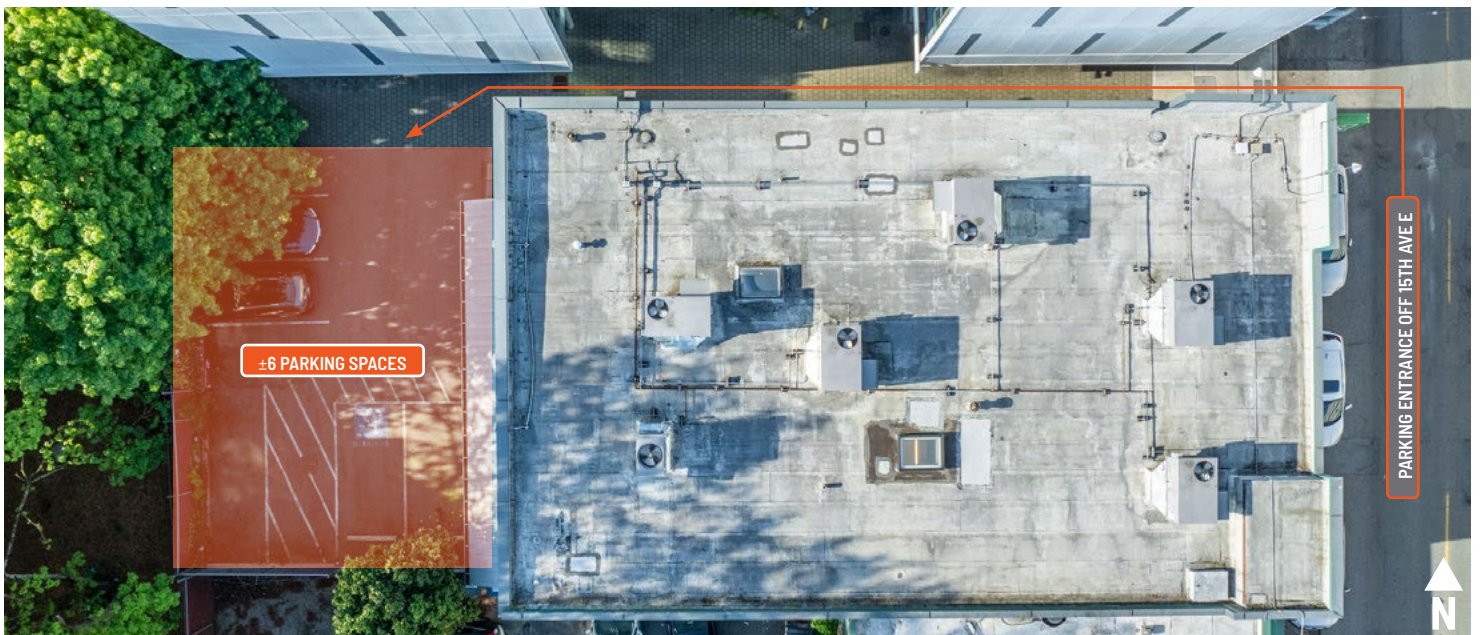
115 15TH AVE E, SEATTLE, WA 98112

**Basement | 1,715 RSF | Renovated 2016**

Available only with first floor or full building lease



**Onsite Parking**



FOR MORE INFO  
**CONTACT**

BOJIDAR GABROVSKI  
JACK DEANE  
JACK FRANZ

bgabrovski@orioncp.com  
jdeane@orioncp.com  
jfranz@orioncp.com

847.275.8474  
206.707.1315  
925.482.7232

1218 Third Ave, Suite 2200  
Seattle, WA 98101  
[www.orioncp.com](http://www.orioncp.com)

**ORION**  
COMMERCIAL PARTNERS