

# Available 18,749 SF



6205 Indianapolis  
Hammond, IN

**Contact us:**

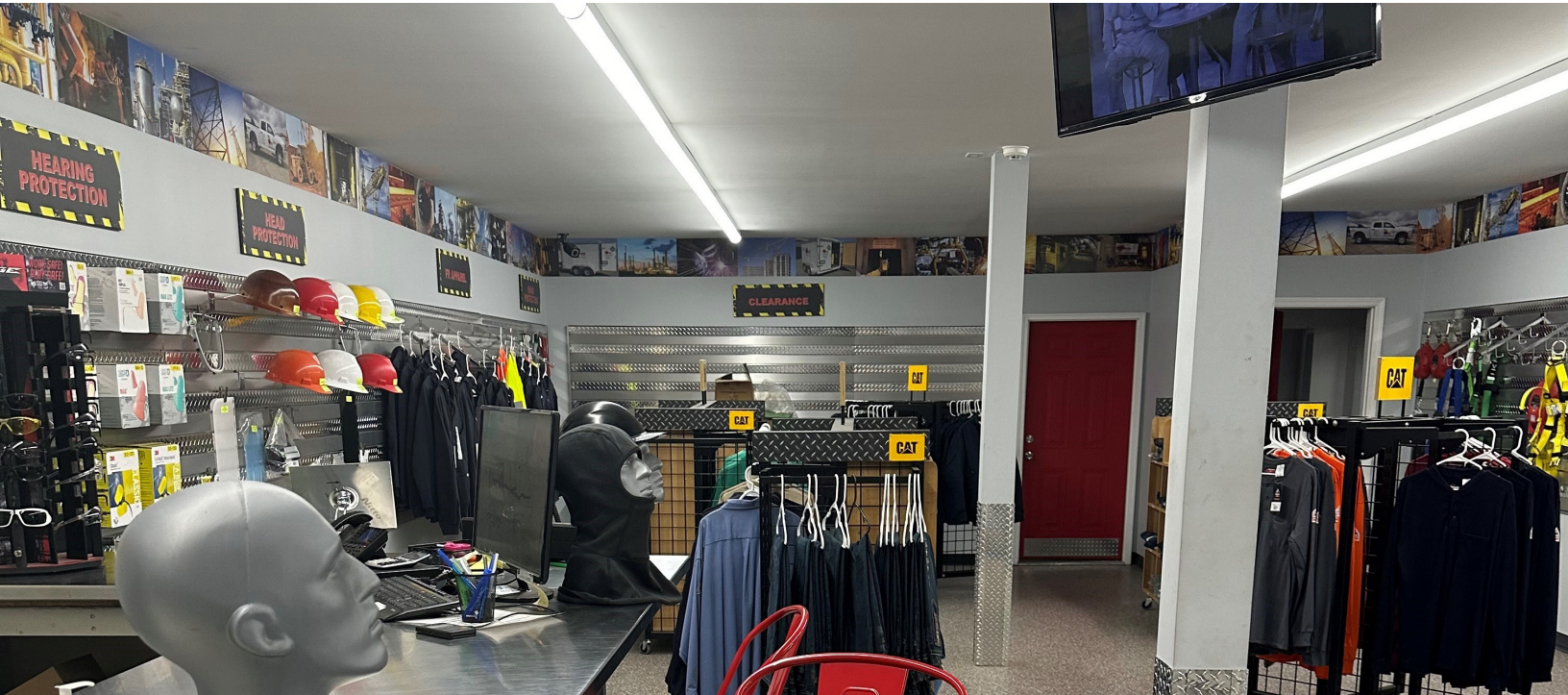
**Peter Bourke**

+1 847 698 8252

[peter.bourke@colliers.com](mailto:peter.bourke@colliers.com)

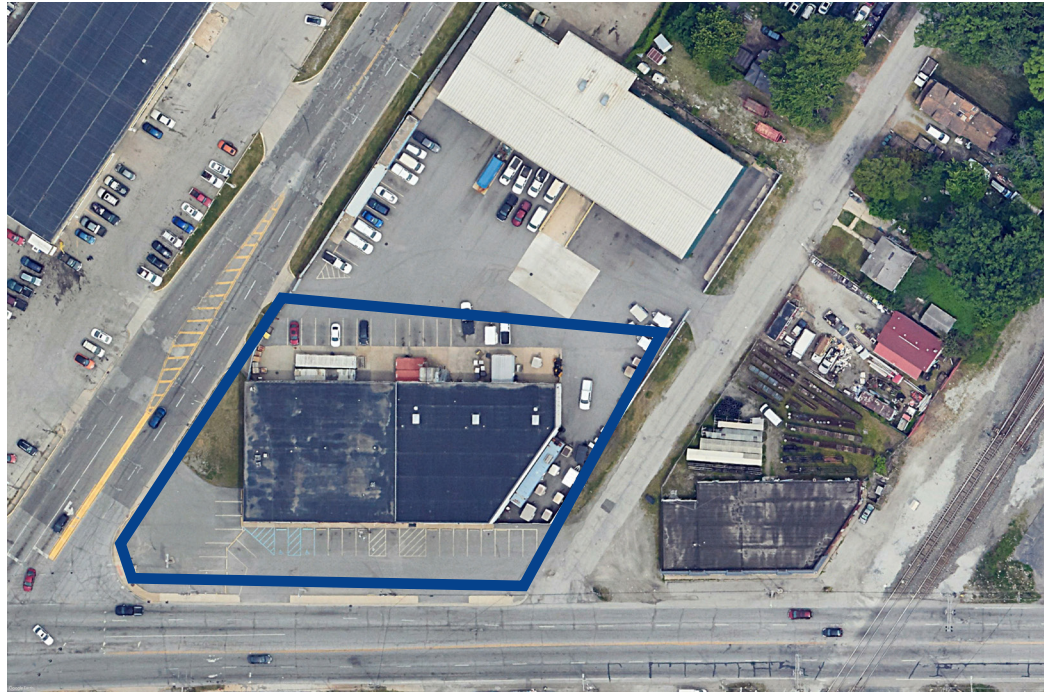


6250 N. River Road, Suite 11-100  
Rosemont, IL 60018  
[colliers.com](http://colliers.com)



### Property Overview

- Lease Rate: \$15 SF/Year Gross
- Available SF: 18,749 SF
- Expenses: Utilities/Trash
- Building Size: 18,749 SF
- Approx. 4,000 SF Office
- Parking: Car and Truck (potential for extra land)
- Zoning: I-2
- 3 DID
- Ceiling Heights: 16'-18'
- Enterprise Zone
- Excellent visibility
- High traffic count



**Peter Bourke**

+1 847 698 8252

peter.bourke@colliers.com



