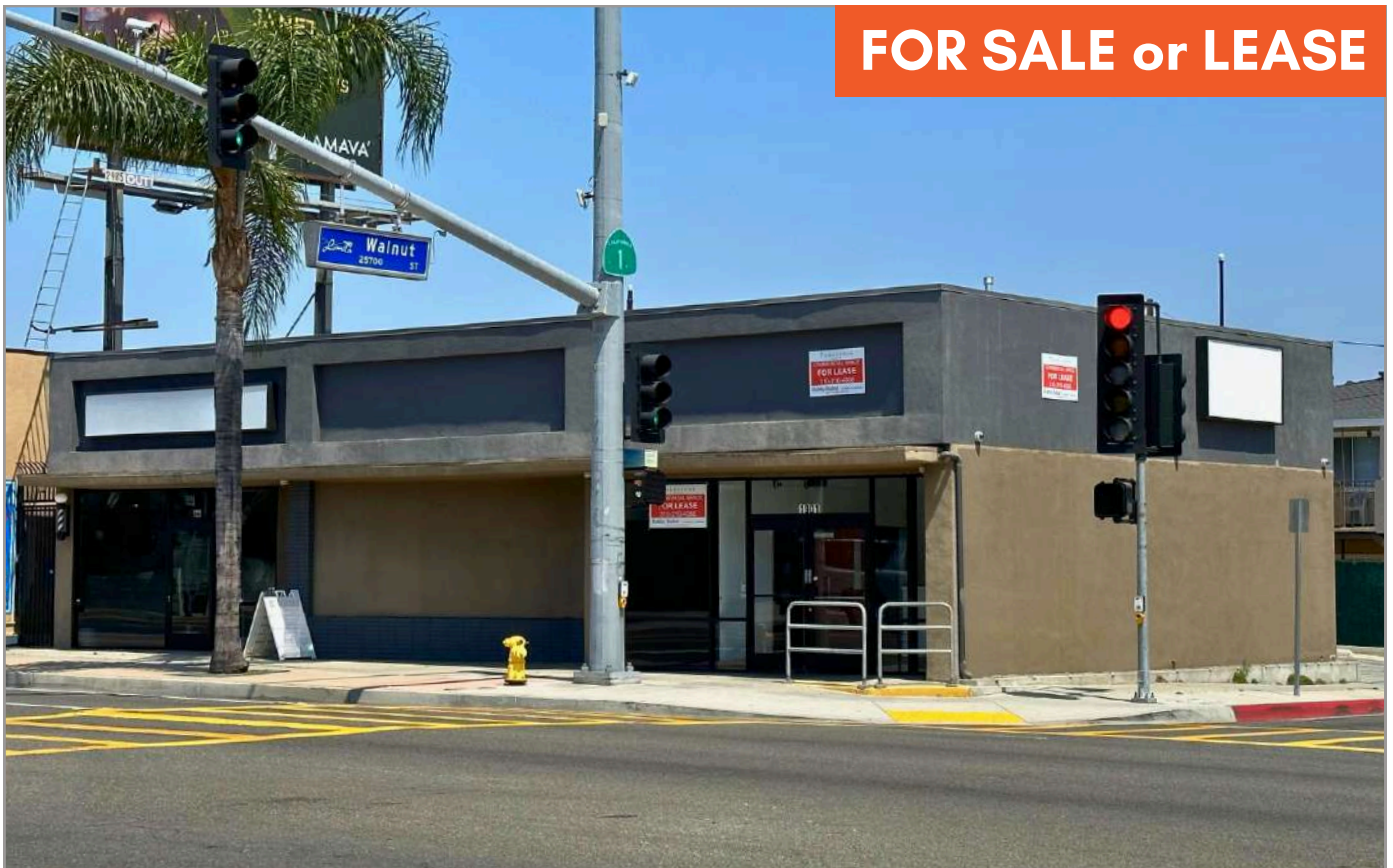


FOR SALE or LEASE



1901 - 1905 Pacific Coast Hwy, Lomita, CA 90717

2nd Generation Restaurant + Retail Space
Two (2) Retail Units | Signalized Corner | Billboard Income
Vacant - Owner-User Opportunity

Approx. 2,294 SF Building

Approx. 5,706 SF Lot

APN: 7375-021-006

Proforma Cap Rate = Approx. 6.8%*

ASKING PRICE: \$1,250,000

Bobby Babai, MBA

Broker

CA DRE Lic. # 01467440

(310) 210-4058

bobby@turnstonerealty.com

www.TurnstoneRealty.com

 **TURNSTONE**
REALTY

Property Highlights

Building Improvements and Amenities:

- New multi-layer roof installed in late 2024
- New insulation with radiant barrier installed in 2025
- Five parking spaces + one ADA parking space
- Large trash enclosure in parking lot

1901 PCH Improvements (2nd Generation Restaurant Space):

- Approx. 1,736 SF
- 11 Ft Type I hood
- 4 Ft Type I fryer hood
- Dishwasher hood
- 750-gallon in-ground grease interceptor in the parking lot
- Fire suppression system for the two Type I hoods
- 450 Amp, 120/208V, 3-phase electrical service
- High output natural gas
- Ethernet cabling throughout the space
- 15-ton HVAC unit serving the kitchen areas
- 2.75-ton HVAC unit serving the lobby area
- Fiberglass Reinforced Plastic (FRP) wall panels
- Ceramic tile flooring
- New built-in storefront furniture
- New ceiling tiles
- New LED panel lights
- Triple signage available

1905 PCH Improvements (Retail Space):

- Approx. 558 SF
- New HVAC split system
- New ceiling tiles
- 225 Amp, 120/208V, 3-phase electrical service
- Double signage available with existing box signs

Bobby Babai, MBA

Broker

CA DRE Lic. # 01467440

(310) 210-4058

bobby@turnstonerealty.com

www.TurnstoneRealty.com

 **T U R N S T O N E**
REALTY

Property & Leasing Overview

1901 Pacific Coast Highway

- Approx. 1,736 SF
- 2nd Generation Take-Out & Delivery Restaurant
- Status: Vacant – Available for Immediate Lease
- Base Rent: \$2.95/SF/Month (NNN)
- Current NNN: Approx. \$0.75/SF/Month
- **Total Rent: Approx. \$6,423/Month**
- Parking: Four (4) dedicated spaces plus a shared ADA parking space

1905 Pacific Coast Highway

- Approx. 558 SF
- Retail / Service Space
- Status: Vacant – Available for Immediate Lease
- Base Rent: \$2.95/SF/Month (NNN)
- Current NNN: Approx. \$0.75/SF/Month
- **Total Rent: Approx. \$2,065/Month**
- Parking: One (1) dedicated space plus a shared ADA parking space

Bobby Babai, MBA

Broker

CA DRE Lic. # 01467440

(310) 210-4058

bobby@turnstonerealty.com

www.TurnstoneRealty.com

 **T U R N S T O N E**
REALTY

Proforma NOI & CAP RATE

PROJECTED STABILIZED NOI (NNN)

Upon lease-up of vacant retail units

Proforma Retail Base Rent:

1901 PCH (1,736 SF @ \$2.95/SF): ~\$61,454*/Year

1905 PCH (558 SF @ \$2.95/SF): ~\$19,754*/Year

Total Retail Base Rent: ~\$81,208*/Year

Billboard Income (Actual): \$3,600/Year,
due to increase to \$4,200/Year in 11/2026.

Total Proforma NOI (on NNN Basis): ~\$84,800*/Year

Proforma Cap Rate = Approx. 6.8%*

Based on projected stabilized NNN income and the asking price of \$1,250,000, consistent with comparable retail transactions in the local market.

**Proforma Income and cap rate projections are provided for reference purposes only and do not constitute a representation or guarantee of value.*

Bobby Babai, MBA

Broker

CA DRE Lic. # 01467440

(310) 210-4058

bobby@turnstonerealty.com

www.TurnstoneRealty.com

 **T U R N S T O N E**
REALTY

1901 Pacific Coast Hwy - Photos

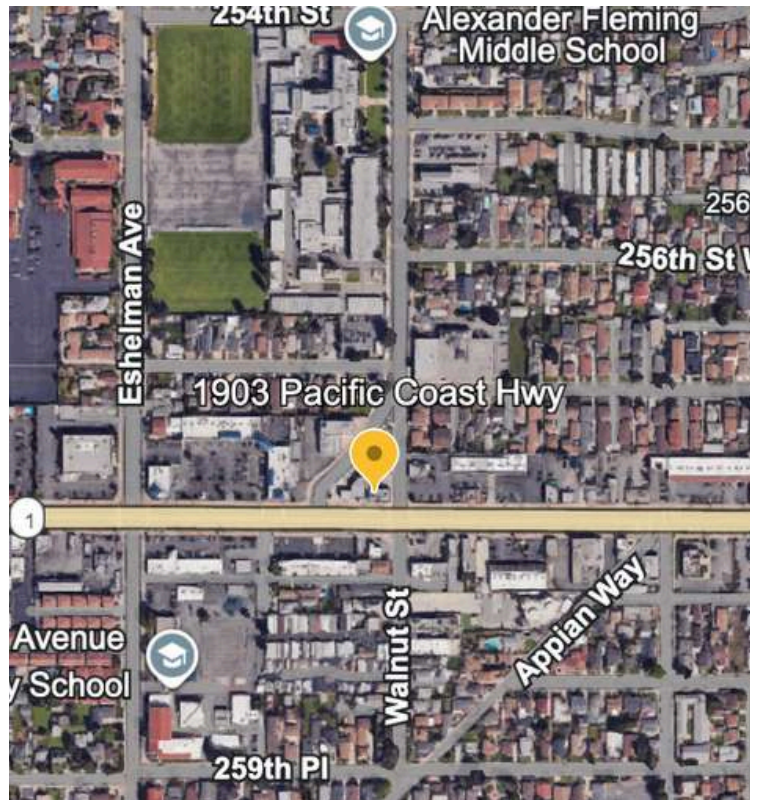
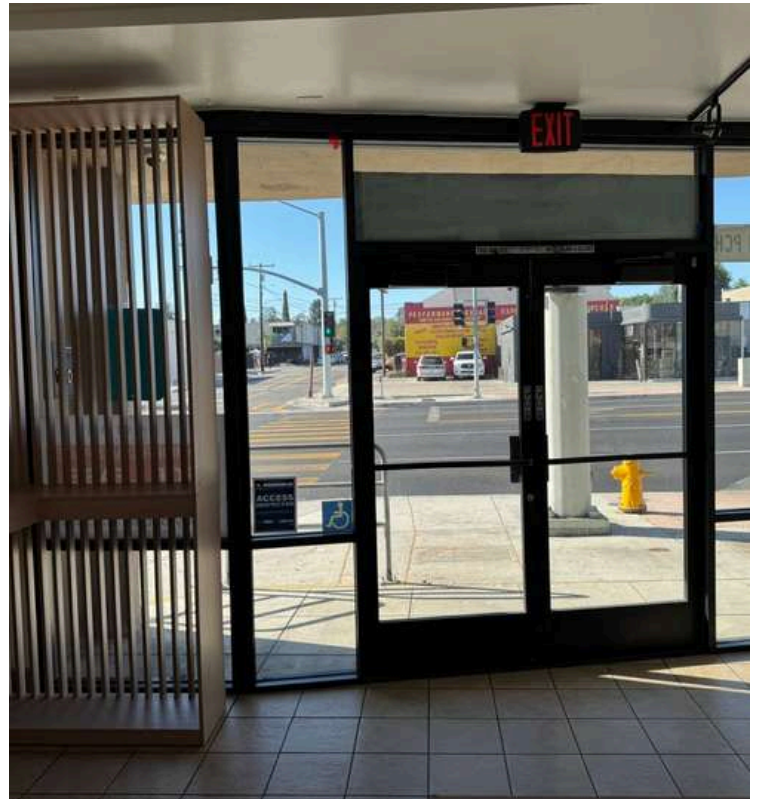


Bobby Babai, MBA
Broker
CA DRE Lic. # 01467440

(310) 210-4058
bobby@turnstonerealty.com
www.TurnstoneRealty.com

 **TURNSTONE**
REALTY

1901 Pacific Coast Hwy - Photos

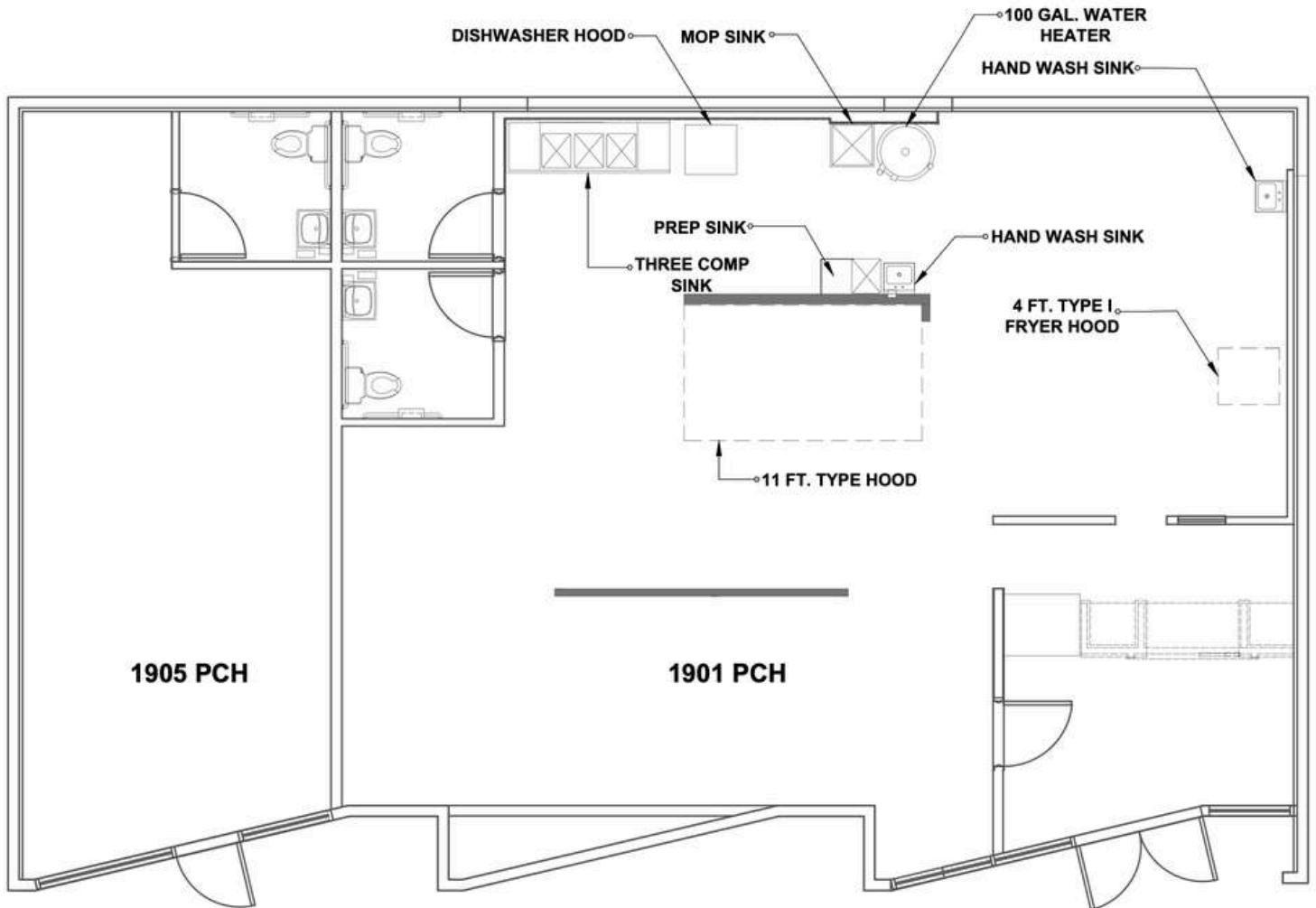


Bobby Babai, MBA
Broker
CA DRE Lic. # 01467440

(310) 210-4058
bobby@turnstonerealty.com
www.TurnstoneRealty.com

TURNSTONE
REALTY

1901-1905 Pacific Coast Hwy - Building Plan



1901-1905 PACIFIC COAST HIGHWAY LOMITA, CA 90717
PROJECT ADDRESS

Bobby Babai, MBA

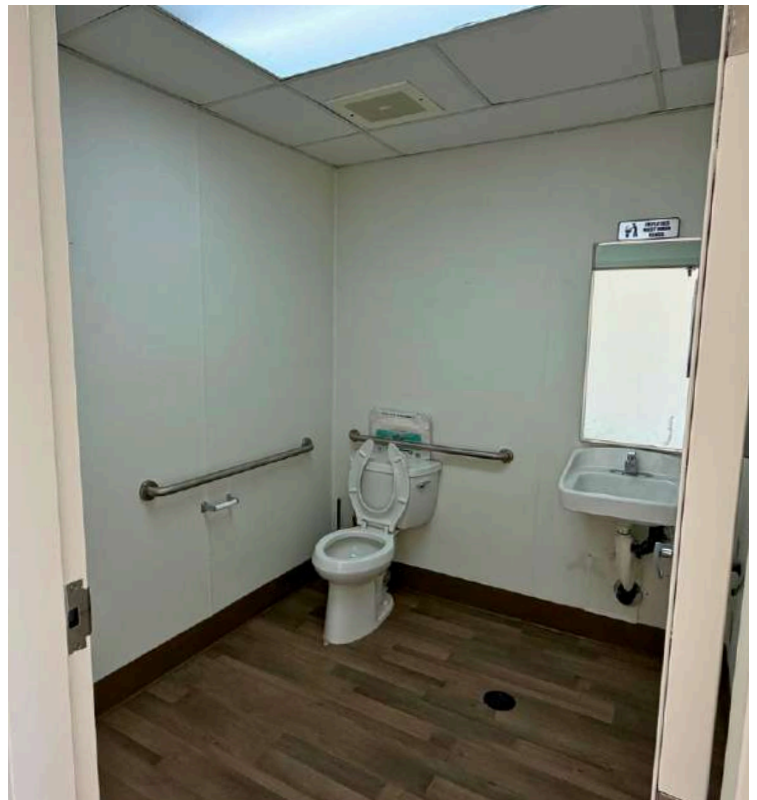
Broker
CA DRE Lic. # 01467440

(310) 210-4058

bobby@turnstonerealty.com
www.TurnstoneRealty.com

 **TURNSTONE**
REALTY

1905 Pacific Coast Hwy - Photos



Bobby Babai, MBA
Broker
CA DRE Lic. # 01467440

(310) 210-4058
bobby@turnstonerealty.com
www.TurnstoneRealty.com

 **TURNSTONE**
REALTY

Confidentiality & Disclaimers

These marketing materials (the “Materials”) have been prepared by Turnstone Realty and are being furnished solely for the purpose of evaluating the subject property. The Materials are confidential and are intended only for the party receiving them. They may not be reproduced, distributed, or disclosed to any other person or entity without the prior written consent of Turnstone Realty.

These Materials are provided for informational purposes only and do not constitute a representation, warranty, or guarantee of any kind. Information contained herein has been obtained from sources believed to be reliable, including public information; however, Turnstone Realty and Seller have not independently verified such information and make no representations or warranties, express or implied, as to the accuracy or completeness of the information provided.

All square footages, dimensions, financial information, and property details are approximate and/or based on public information. Prospective purchasers or tenants and their representatives are advised to independently verify all information prior to entering into any purchase or lease transaction. The Materials are not a substitute for a thorough due diligence investigation. All references made to type of “use” and “signage” are subject to approval by governmental agencies.

Bobby Babai, MBA

Broker

CA DRE Lic. # 01467440

(310) 210-4058

bobby@turnstonerealty.com

www.TurnstoneRealty.com

 **T U R N S T O N E**
REALTY