

2110

SE 44th CT

Grimes, IA

2,400 SF  
FOR SUBLEASE



CBRE

# EXECUTIVE SUMMARY

2110 SE 44th Ct is a modern industrial condo warehouse located in Grimes' southeast industrial corridor. The space is clean, well-maintained, and ideal for warehouse, light manufacturing, or service users. Positioned within a newer industrial park, the property offers strong access to the Des Moines metro and surrounding infrastructure, making it a turnkey option for businesses seeking space in a growing submarket.

## AVAILABLE SPACE

Building SF	6,720
Rentable SF	2,400 (2 Bays)
Lease Through	8/31/2027

## LEASE RATE

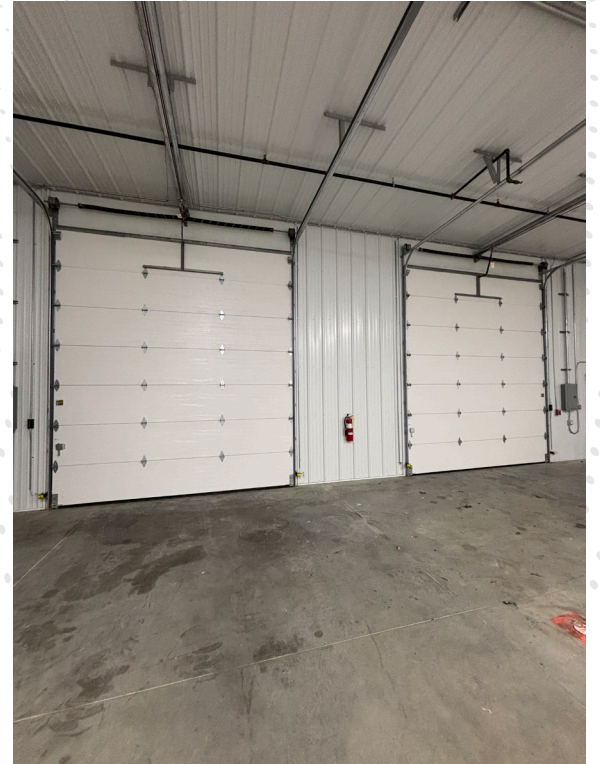
Lease Rate	\$2,750/month MG
------------	------------------

## SPACE FEATURES

Year Built	1992
Year Remodeled	2023
Sprinkler	Wet
Parking Stalls	2
Drive-Ins	2 (12' x 14')
Clear Height	15'
Heat	Reznor



# INTERIORS

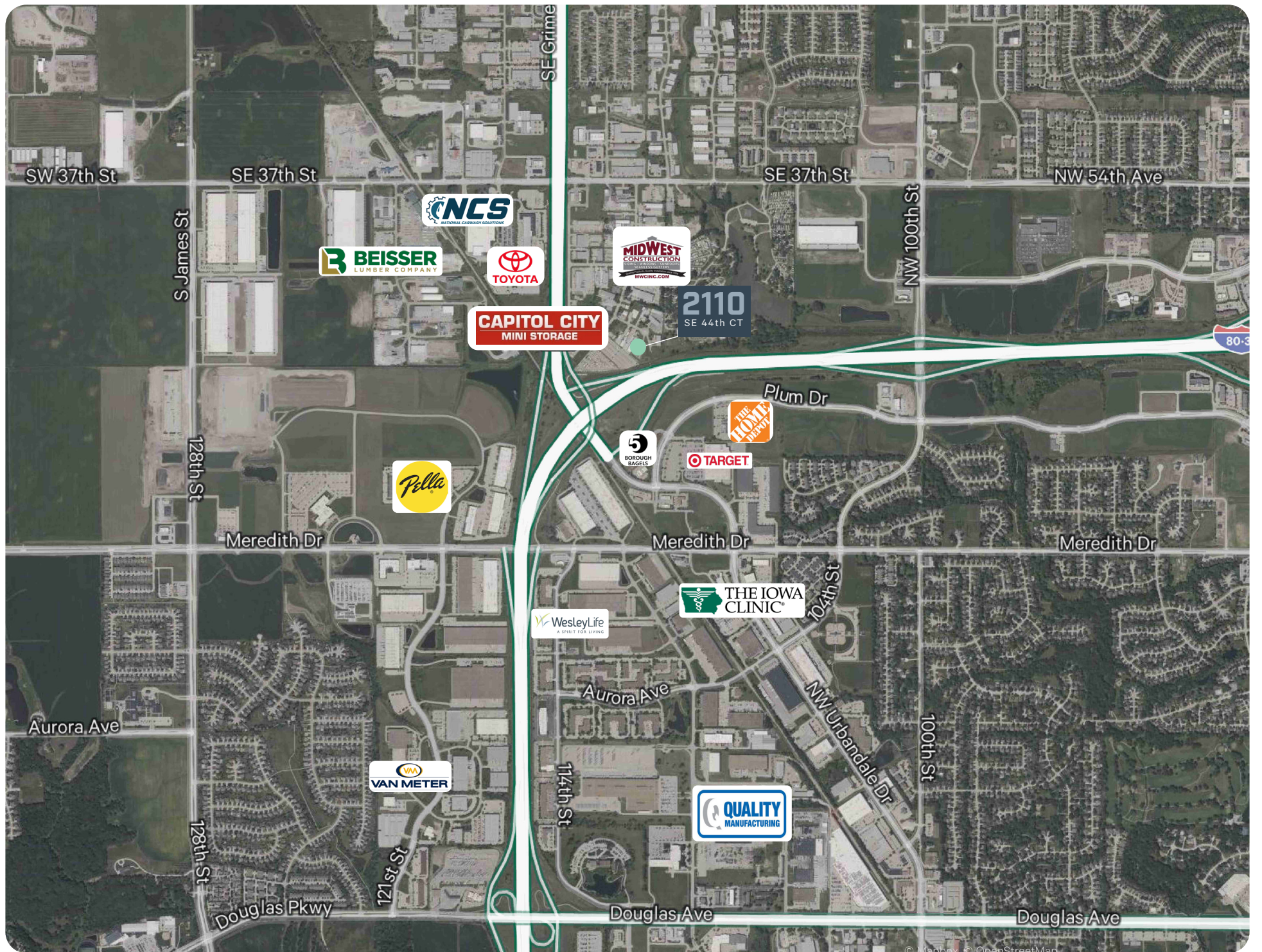


# EXTERIORS



# AERIAL





# 2110

## SE 44th CT

Grimes, IA



### Harrison Kruse, SIOR, CCIM

First Vice President

+1 515 556 9168

[harrison.kruse@cbre.com](mailto:harrison.kruse@cbre.com)

Licensed in the State of Iowa

### Ned Turner

Senior Associate

+1 515 371 0499

[ned.turner@cbre.com](mailto:ned.turner@cbre.com)

Licensed in the State of Iowa

© 2026 CBRE, Inc. All rights reserved. This information has been obtained from sources believed reliable but has not been verified for accuracy or completeness. You should conduct a careful, independent investigation of the property and verify all information. Any reliance on this information is solely at your own risk. CBRE and the CBRE logo are service marks of CBRE, Inc. All other marks displayed on this document are the property of their respective owners, and the use of such logos does not imply any affiliation with or endorsement of CBRE. Photos herein are the property of their respective owners. Use of these images without the express written consent of the owner is prohibited.

**CBRE**