

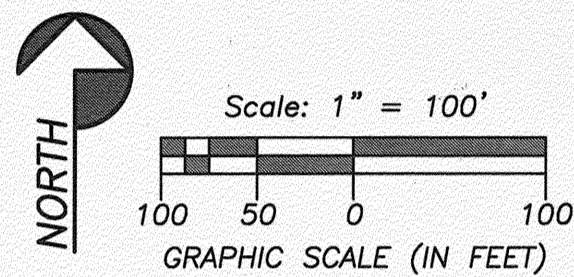
WOODSTORK PARK

A REPLAT OF LOT 7C, TAMPA TELECOM PARK - 5, AS RECORDED IN PLAT BOOK 68, PAGE 33, OF THE PUBLIC RECORDS OF HILLSBOROUGH COUNTY, FLORIDA, SECTION 11, TOWNSHIP 28 SOUTH, RANGE 19 EAST CITY OF TEMPLE TERRACE, HILLSBOROUGH COUNTY, FLORIDA

PLAT BOOK: 144 PAGE: 104

CURVE TABLE					
Curve #	Radius	Delta	Arc/Length	Chord	Chord Bearing
C1	540.00'	04°42'13"	44.33'	44.32'	S57°44'25"E
C2	540.00'	18°21'52"	173.08'	172.34'	S69°16'27"E
C3	540.00'	00°17'34"	2.76'	2.76'	S78°18'36"E

LINE TABLE		
Line #	Bearing	Distance
L1	S00°01'45"E	31.52'
L2	N81°00'04"W	7.61'
L3	N08°49'13"E	31.26'



Scale: 1" = 100'

GRAPHIC SCALE (IN FEET)

BASIS OF BEARINGS:
EASTERLY R/W LINE OF TELECOM DRIVE

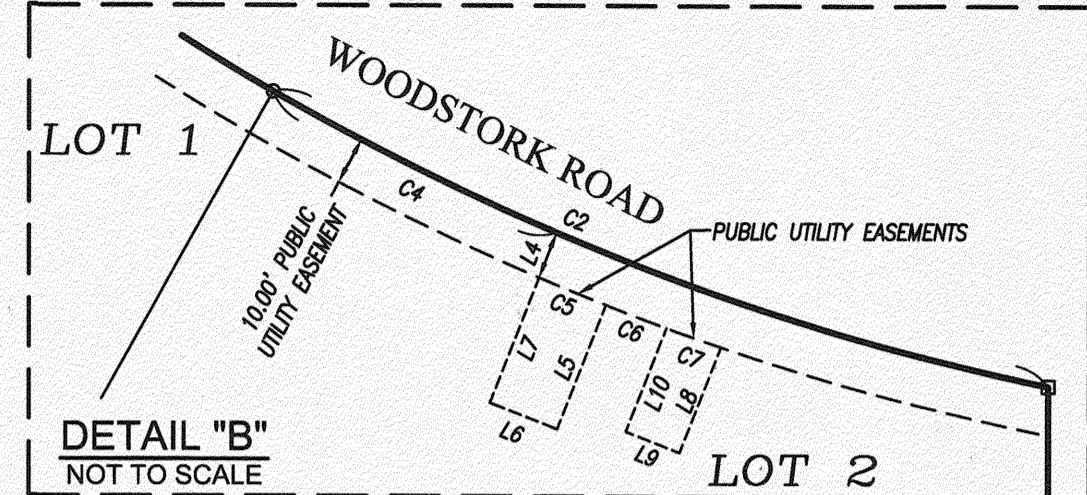
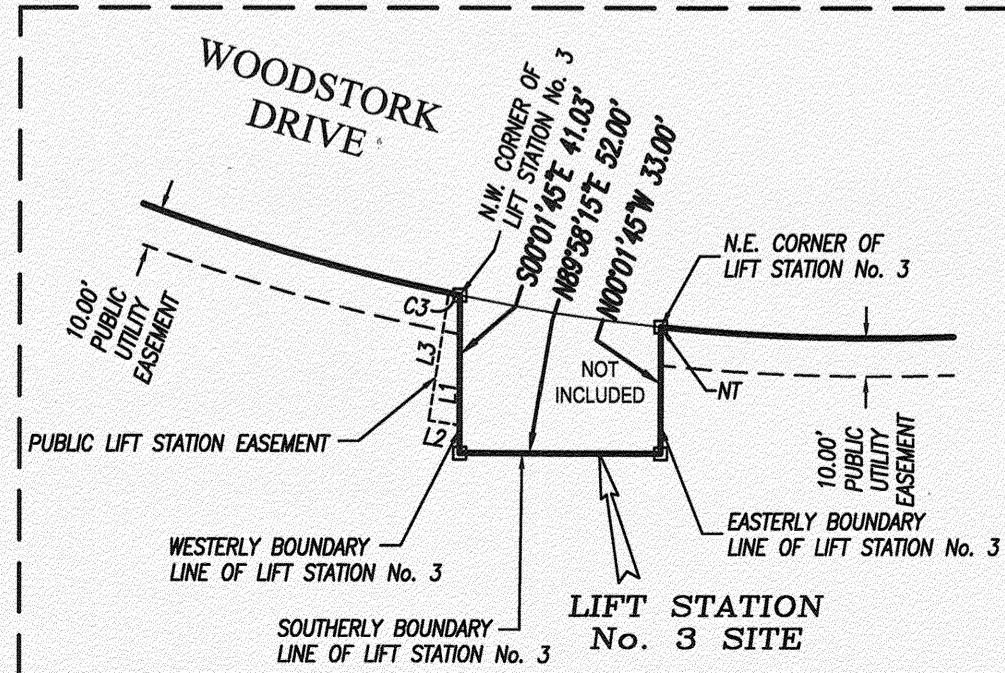
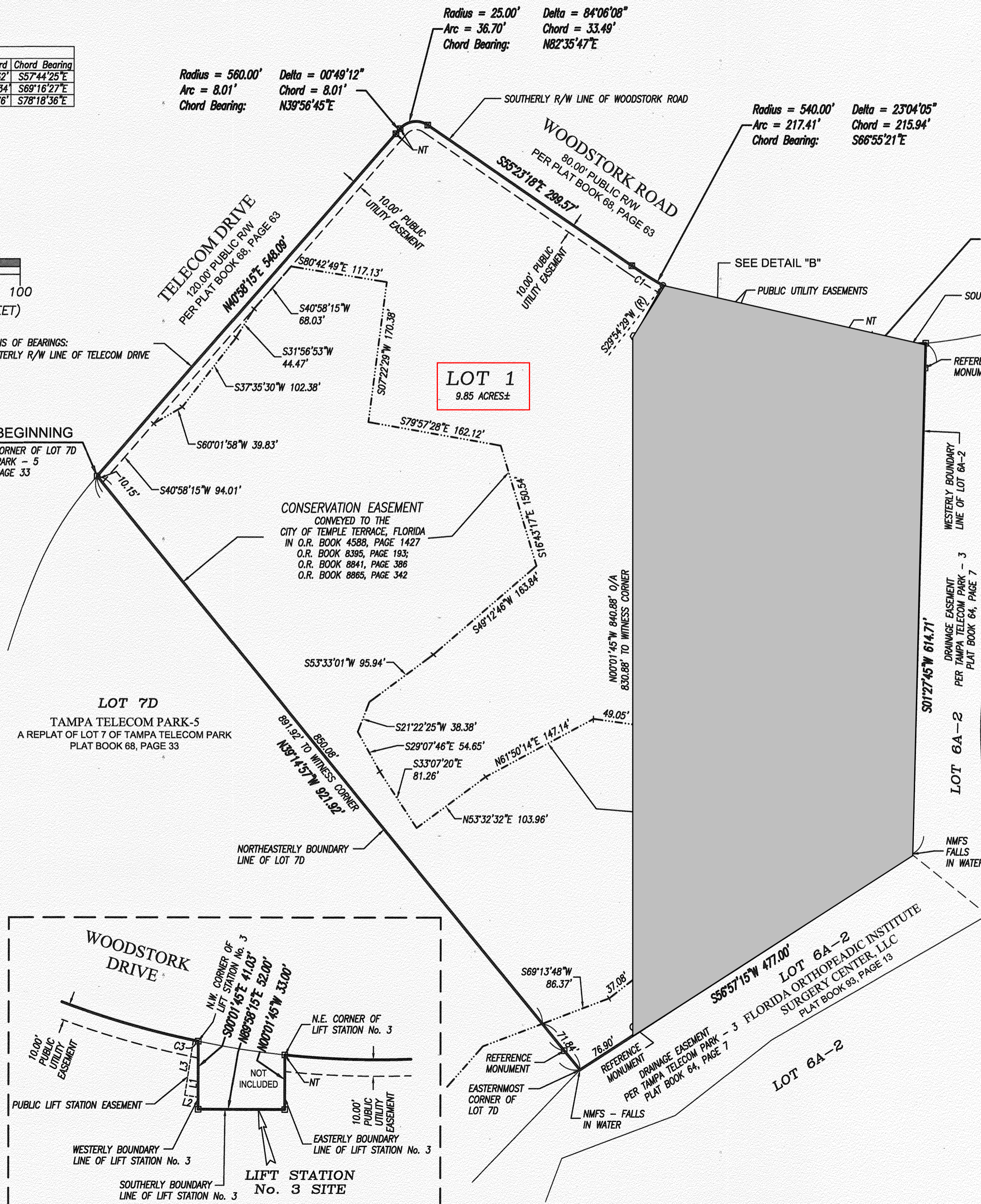
POINT OF BEGINNING

NORTHERNMOST CORNER OF LOT 7D
TAMPA TELECOM PARK - 5
PLAT BOOK 68, PAGE 33

LEGEND

- FOUND 4"x4" CONCRETE MONUMENT
PRM LB 3913
(UNLESS OTHERWISE NOTED)
- SET 4"x4" CONCRETE MONUMENT
PRM LB 3913
- SET PK NAIL & DISK
PRM LB 3913
- FOUND PK NAIL & DISK
PRM LB 3913
- SET 5/8" IRON ROD LB 3913
- ◎ PERMANENT CONTROL POINT
SET LB 3913 PK NAIL & DISK
- ⤵ POINT OF CURVATURE AND
POINT OF TANGENCY ON CURVE
- N00°00'00"E (R) --- = RADIAL BEARING TIE
- - - - - = UTILITY EASEMENT

- (NR) = NON-RADIAL
- (R) = RADIAL
- (P) = RECORDED PLAT INFORMATION
- C/L = CENTERLINE
- O/A = OVER ALL
- R/W = RIGHT-OF-WAY
- CCR = CERTIFIED CORNER RECORD
- D.E. = DRAINAGE EASEMENT
- E.P.C. = ENVIRONMENTAL PROTECTION COMMISSION
- FCM = FOUND CONCRETE MONUMENT
- FIP = FOUND IRON PIPE
- FIR = FOUND IRON ROD
- FPK = FOUND PK NAIL
- FN+D = FOUND NAIL & DISK
- LB = LICENSED BUSINESS
- HOA = HOMEOWNERS ASSOCIATION
- NAD83 = NORTH AMERICAN DATUM 1983
- NMFS = NO MONUMENT FOUND OR SET
- NT = NON-TANGENT
- N.T.S. = NOT TO SCALE
- O.R. = OFFICIAL RECORDS
- POB = POINT OF BEGINNING
- POC = POINT OF COMMENCEMENT
- PCP = PERMANENT CONTROL POINT
- PRM = PERMANENT REFERENCE MONUMENT
- R.M. = REFERENCE MONUMENT
- SEC = SECTION
- SN+D = SET NAIL & DISK LB 3913
- SWFMD = SOUTHWEST FLORIDA WATER MANAGEMENT DISTRICT
- TYP = TYPICAL



CURVE TABLE					
Curve #	Radius	Delta	Arc/Length	Chord	Chord Bearing
C4	540.00'	07°40'28"	72.33'	72.28'	S63°55'45"E
C5	550.00'	01°02'30"	10.00'	10.00'	S68°18'11"E
C6	550.00'	00°56'16"	9.00'	9.00'	S69°17'34"E
C7	550.00'	00°50'01"	8.00'	8.00'	S70°10'43"E

LINE TABLE		
Line #	Bearing	Distance
L4	N21°21'46"E	10.00'
L5	S21°21'46"W	15.17'
L6	N68°38'14"W	10.00'
L7	N21°21'46"E	15.23'
L8	S21°21'46"W	12.29'
L9	N68°38'14"W	8.00'
L10	N21°21'46"E	12.08'

- PLAT NOTES:**
1. BASIS OF BEARINGS: EASTERLY R/W LINE OF TELECOM DRIVE, BEARS N.40°58'15"E., (GRID).
 2. ALL PLATTED UTILITY EASEMENTS WILL PROVIDE THAT SUCH EASEMENTS WILL ALSO BE EASEMENTS FOR THE CONSTRUCTION, INSTALLATION, MAINTENANCE, AND OPERATION OF CABLE TELEVISION SERVICES; PROVIDED, HOWEVER, NO SUCH CONSTRUCTION, INSTALLATION, MAINTENANCE, AND OPERATION OF CABLE TELEVISION SERVICES WILL INTERFERE WITH THE FACILITIES AND SERVICES OF AN ELECTRIC, TELEPHONE, GAS, OR OTHER PUBLIC UTILITY. IN THE EVENT A CABLE TELEVISION COMPANY DAMAGES THE FACILITIES OF A PUBLIC UTILITY, IT SHALL BE SOLELY RESPONSIBLE FOR THE DAMAGES. THIS SHALL NOT APPLY TO THOSE PRIVATE EASEMENTS GRANTED TO OR OBTAINED BY A PARTICULAR ELECTRIC, TELEPHONE, GAS OR OTHER PUBLIC UTILITY. SUCH CONSTRUCTION, INSTALLATION, MAINTENANCE AND OPERATION SHALL COMPLY WITH THE NATIONAL ELECTRIC SAFETY CODE AS ADOPTED BY THE FLORIDA PUBLIC SERVICE COMMISSION.
 3. SUBDIVISION PLATS BY NO MEANS REPRESENT A DETERMINATION ON WHETHER PROPERTIES WILL OR WILL NOT FLOOD. LAND WITHIN THE BOUNDARIES OF THIS PLAT MAY OR MAY NOT BE SUBJECT TO FLOODING, THE CITY OF TEMPLE TERRACE BUILDING DEPARTMENT HAS INFORMATION REGARDING FLOODING AND RESTRICTIONS ON DEVELOPMENT.

TITLE NOTES:
THIS SUBDIVISION IS SUBJECT TO THE NOTICE OF ADOPTION OF A DEVELOPMENT ORDER RECORDED IN OFFICIAL RECORDS BOOK 4584, PAGE 1147, AND ORDINANCE NO. 1150 OF THE CITY OF TEMPLE TERRACE RECORDED IN OFFICIAL RECORDS BOOK 15628, PAGE 590, AS AFFECTED BY ASSIGNMENT OF DEVELOPMENT RIGHTS RECORDED IN OFFICIAL RECORDS BOOK 15895, PAGE 10, AND ASSIGNMENT OF DEVELOPMENT RIGHTS BY AND BETWEEN TRITON PROPERTIES GROUP FLORIDA, LLC, A FLORIDA LIMITED LIABILITY COMPANY, AND TAMPA TELECOM PROFESSIONAL PARK, LLC, A FLORIDA LIMITED LIABILITY COMPANY RECORDED IN OFFICIAL RECORDS BOOK 16229, PAGE 658, AS AMENDED BY ORDINANCE NO. 1162, RECORDED IN OFFICIAL RECORDS BOOK 16988, PAGE 1021 AND BY NOTICE OF ADOPTION OF AN AMENDED DEVELOPMENT ORDER RECORDED IN OFFICIAL RECORDS BOOK 17906, PAGE 824.

THIS SUBDIVISION IS SUBJECT TO THE RESTRICTIONS, COVENANTS, CONDITIONS AND EASEMENTS, WHICH INCLUDE PROVISIONS FOR A. AN EASEMENT ON THE LAND; B. A LIEN FOR LIQUIDATED DAMAGES; C. A PRIVATE CHARGE OR ASSESSMENTS, AS CONTAINED IN THAT CERTAIN DECLARATION OF COVENANTS, CONDITIONS AND RESTRICTIONS OF TAMPA TELECOM PARK RECORDED IN OFFICIAL RECORDS BOOK 4588, PAGE 1436, AS AMENDED BY FIRST AMENDMENT RECORDED JANUARY 22, 2016, IN OFFICIAL RECORDS BOOK 23831, PAGE 196.

THIS SUBDIVISION IS SUBJECT TO THE RESTRICTIONS, COVENANTS AND CONDITIONS SET FORTH IN THAT CERTAIN SPECIAL WARRANTY DEED FROM COLLIER-GTJR JOINT VENTURE TO TRITON PROPERTIES GROUP FLORIDA, LLC, DATED DECEMBER 14, 2005, RECORDED DECEMBER 19, 2005, IN OFFICIAL RECORDS BOOK 15895, PAGE 1.

THIS SUBDIVISION IS SUBJECT TO THE RESTRICTIONS, COVENANTS AND CONDITIONS SET FORTH IN THAT CERTAIN SPECIAL WARRANTY DEED FROM TRITON PROPERTIES GROUP FLORIDA, LLC TO TAMPA TELECOM PROFESSIONAL PARK, LLC DATED MARCH 14, 2006 AND RECORDED ON MARCH 16, 2006 IN OFFICIAL RECORDS BOOK 16229, PAGE 653.

THIS SUBDIVISION IS SUBJECT TO THE TAMPA ELECTRIC COMPANY RECORDED IN OFFICIAL RECORDS BOOK 18670, PAGE 377, BEING STRIPS OF LAND 15.00' WIDE LYING 7.50' EACH SIDE OF THE CENTERLINE OF POWER LINES CONSTRUCTED OR TO BE CONSTRUCTED.



8515 Palm River Road | Tampa, Florida 33619
(813) 621-7841 | (813) 664-1832 (fax)
www.lesc.com | L.B. # 3913