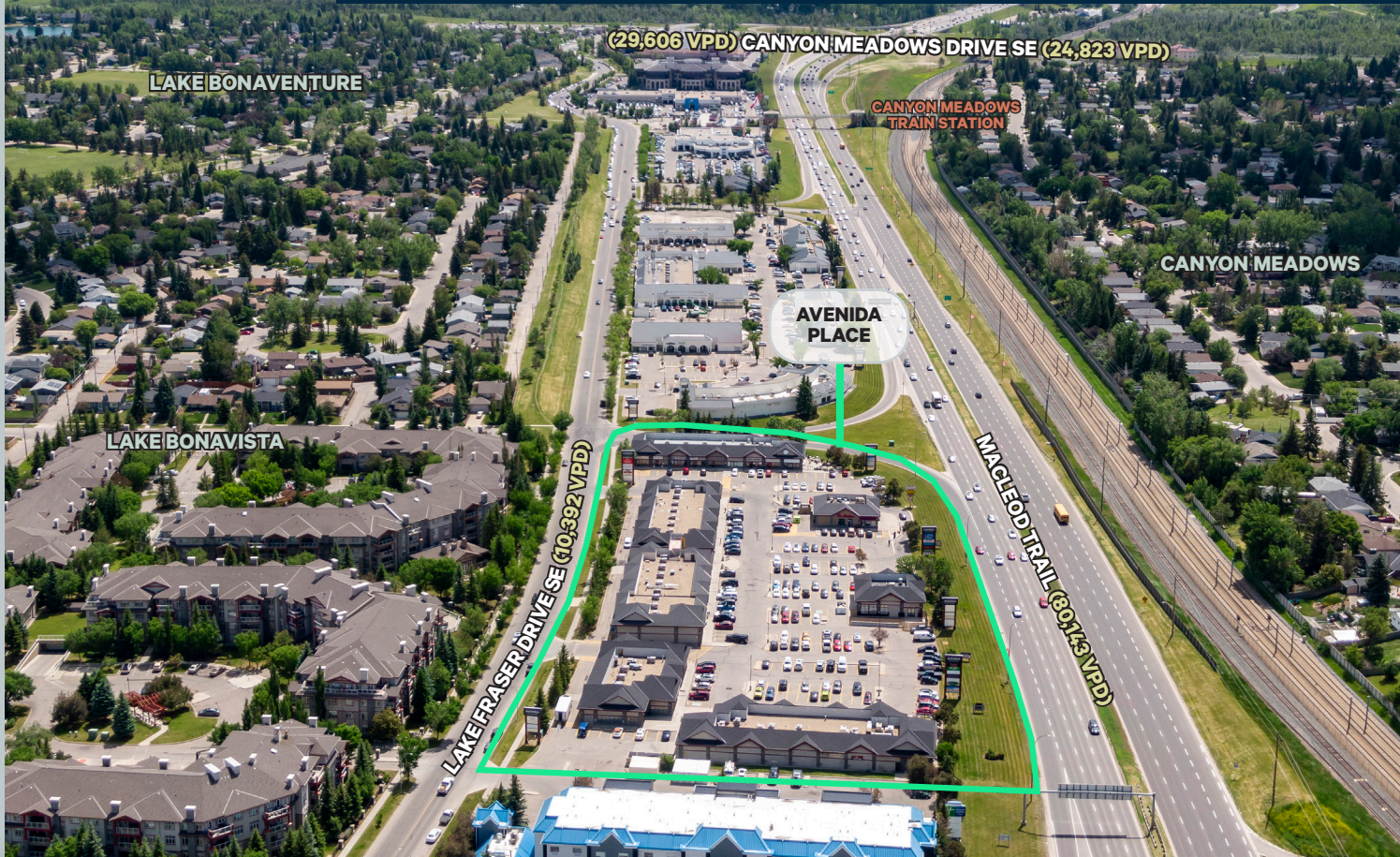


PRIME RETAIL OPPORTUNITY ON MACLEOD TRAIL S



Avenida Place

12100 Macleod Trail S
Calgary, AB

Managed By:



Leased By:



Demographics



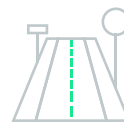
7,969
Population Within 1 KM

54,444
Population Within 3 KM

174,518
Population Within 5 KM



\$156,000
Average Household Income
Within 3 KM



80,143
VPD along Macleod Trail
10,392
VPD along Lake Fraser Drive SE

Prime retail opportunity on Macleod Trail South

- Servicing the communities of Lake Bonavista, Lake Bonaventure, Canyon Meadows, Southwood & Deer Ridge
- From inline to end-cap units, the diverse range of sizes available can accommodate different business needs
- Benefit from high visibility and significant volume of traffic on Macleod Trail
- Easily accessible with a large parking area
- Maximum exposure with prominent pylon signage opportunities off of Macleod Trail
- Tenants include Tim Horton's, Ricky's All Day Grill, Nurture Care Early Learning Centre and other retailers and service providers
- Close proximity to Canyon Meadows C-Train Station and minutes away from Southcentre Mall

Space Available

Unit 707 - 3,335 sq. ft.

Unit 610 - 1,277 sq. ft.

Unit 311 - 1,501 sq. ft.

BASIC RENT - Market

OP COSTS & TAXES - \$23.90 (2026)
(plus management fee)

SIGNAGE - Pylon & Fascia

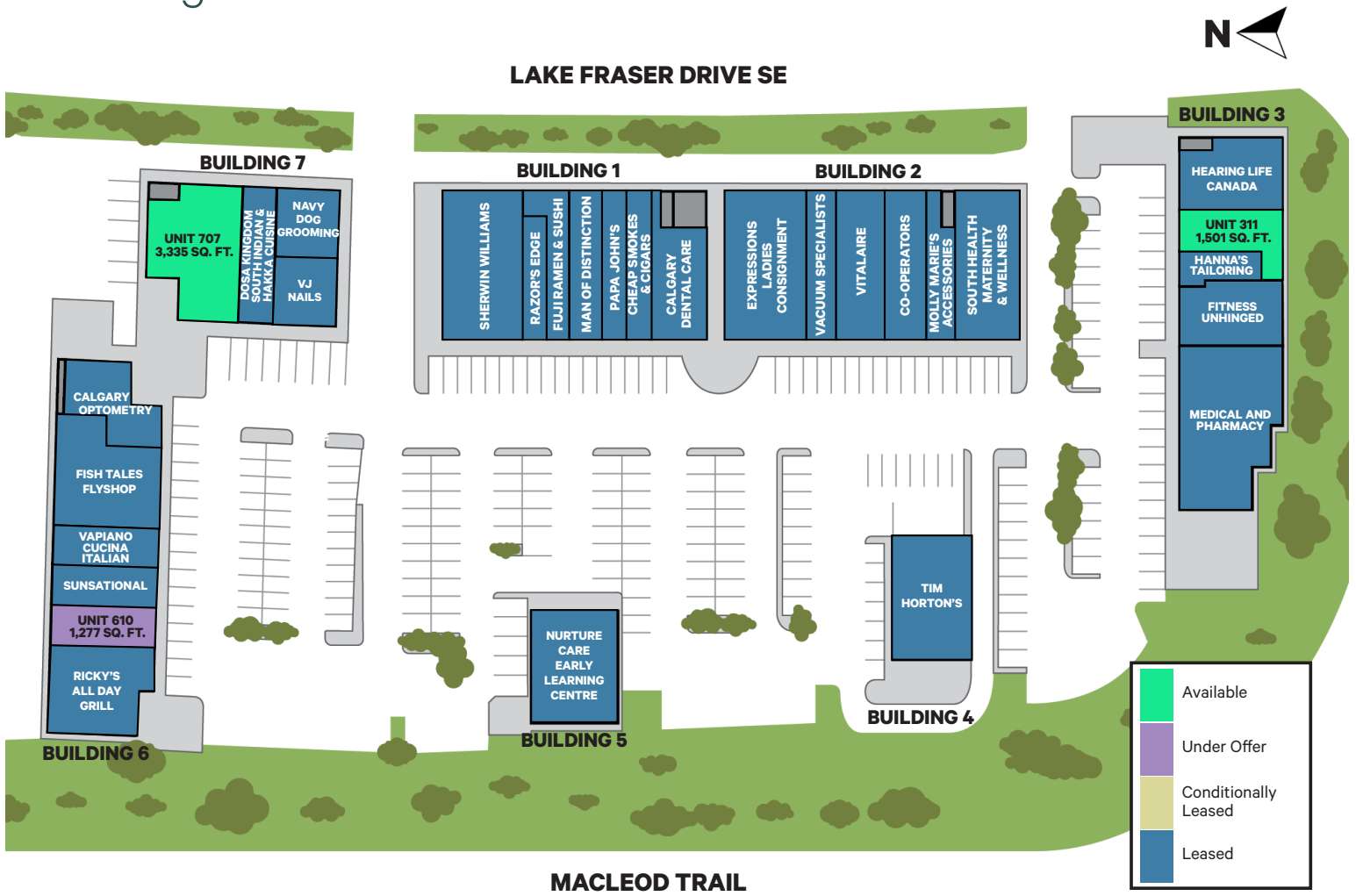
AVAILABLE - Unit 707 & 610 - Immediately
Unit 311 - September 1, 2026

ZONING - C-C2

TERM - 5 - 10 years



Leasing Plan



Aerial of Property



Property Photos

Building 1



Building 2



Building 3



Property Photos

Building 4



Building 5

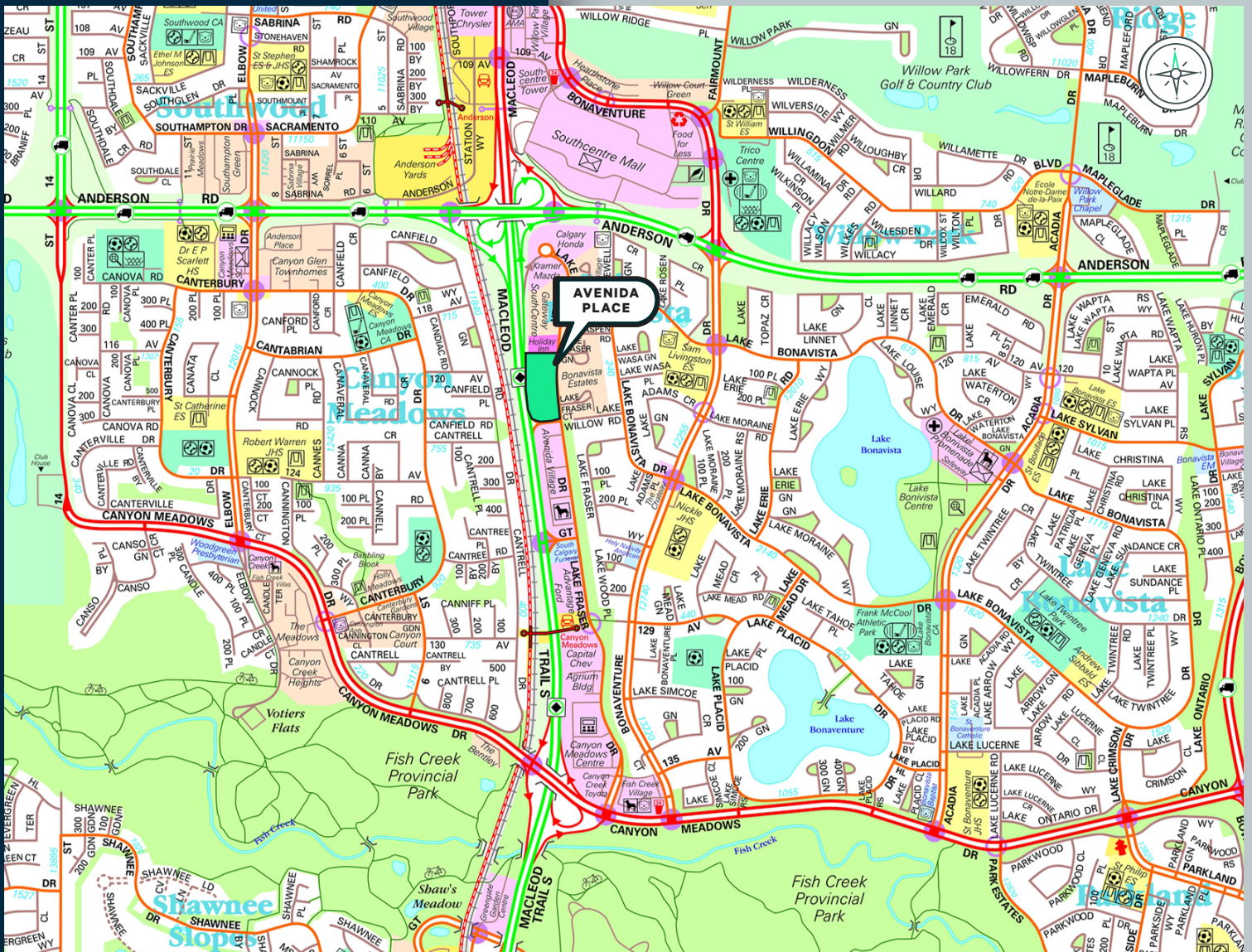


Building 6



Building 7





For More Information Please Contact

Alistair Corbett

Senior Vice President
403.294.5709
alistair.corbett@cbre.com

Cory Miles

Senior Sales Associate
403.750.0523
cory.miles@cbre.com

Mac Marcinew

Sales Associate
587.583.7197
mac.marcinew@cbre.com

Jayne Rogers

Transaction Manager
403.750.0535
jayne.rogers@cbre.com

Brandy Chorney

Marketing Specialist
403.303.3609
brandy.chorney@cbre.com

Managed By:

Leased By:



CBRE Calgary

Eighth Avenue Place
East Tower 525 8 Avenue SW Suite 3200
Calgary, Alberta T2P 1G1

This disclaimer shall apply to CBRE Limited, and to all divisions of the Corporation ("CBRE"). The information set out herein (the "Information") has not been verified by CBRE, and CBRE does not represent, warrant or guarantee the accuracy, correctness and completeness of the Information. CBRE does not accept or assume any responsibility or liability, direct or consequential, for the Information or the recipient's reliance upon the Information. The recipient of the Information should take such steps as the recipient may deem necessary to verify the Information prior to placing any reliance upon the Information. The Information may change and any property described in the Information may be withdrawn from the market at any time without notice or obligation to the recipient from CBRE. Mapping Sources: Canadian Mapping Services canadamapping@cbre.com; DMTISpatial, Environics Analytics, Microsoft Bing, Google Earth. Map© 2024 Sherlock Publishing Ltd.