

Commercial Space for Lease Tulsa, OK

Public
Storage

COMMERCIAL
REAL ESTATE



LOCATION: 8303 E. 81st Street
Tulsa, OK

SIZE: 400 s.f. to 950 s.f.

AVAILABILITY: Suite H - 625 SF for \$900 per mo
*NNN estimated to be \$3.00 psf and is included in price above

AMENITIES: Strong Demographics First Floor
24-hour site access Great visibility
Central Location Easy access

For more information on this opportunity, please contact:

Public Storage
Real Estate Division

www.pscommercialrealestate.com

Candess N. Wing
Director of Commercial Properties

(678)567-4971 Office

(770)334-7647 Cell

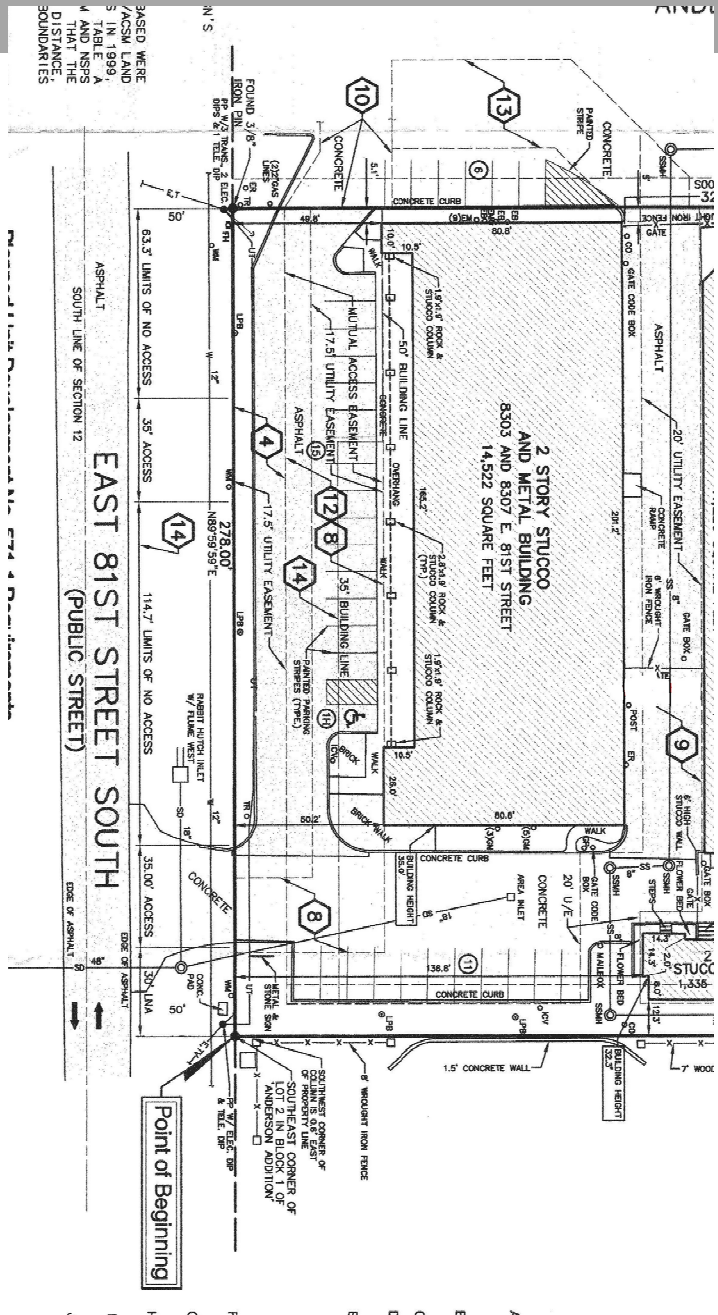
cwing@publicstorage.com

This flyer is intended only as preliminary information on space available for lease; the property owner and its representatives make no representation that it is accurate or complete. Prospective tenants are advised to conduct their own investigation of the suitability of the premises for their intended use, and to consult with legal and tax professionals regarding the consequences of entering into a lease. All terms are subject to change and all spaces are subject to prior rental or withdrawal from the market without notice.

Commercial Space for Lease Tulsa, OK



Site Plan



For more information on this opportunity, please contact:

Public Storage
Real Estate Division

Candess N. Wing
Director of Commercial Properties
(678)567-4971 Office
(770)334-7647 Cell

www.pscommercialrealestate.com

This flyer is intended only as preliminary information on space available for lease; the property owner and its representatives make no representation that it is accurate or complete. Prospective tenants are advised to conduct their own investigation of the suitability of the premises for their intended use, and to consult with legal and tax professionals regarding the consequences of entering into a lease. All terms are subject to change and all spaces are subject to prior rental or withdrawal from the market without notice.