



FOR LEASE

5831 Reidville Road, Moore, SC

±11.26-Acre Development Ready Site



Scott Burgess, MBA
 Vice President
 +1 864 527 5434
 scott.burgess@colliers.com

Garrison Smith
 Brokerage Associate
 +1 864 527 5431
 garrison.smith@colliers.com

Property Details

Address	5831 Reidville Road, Moore, SC
County	Spartanburg
Available	Big Box, Shop Space & Outparcels
Acreage	±11.26 acres
Traffic Counts	±12,900 VPD Reidville Rd; ±16,800 VPD SC-290

Property Highlights

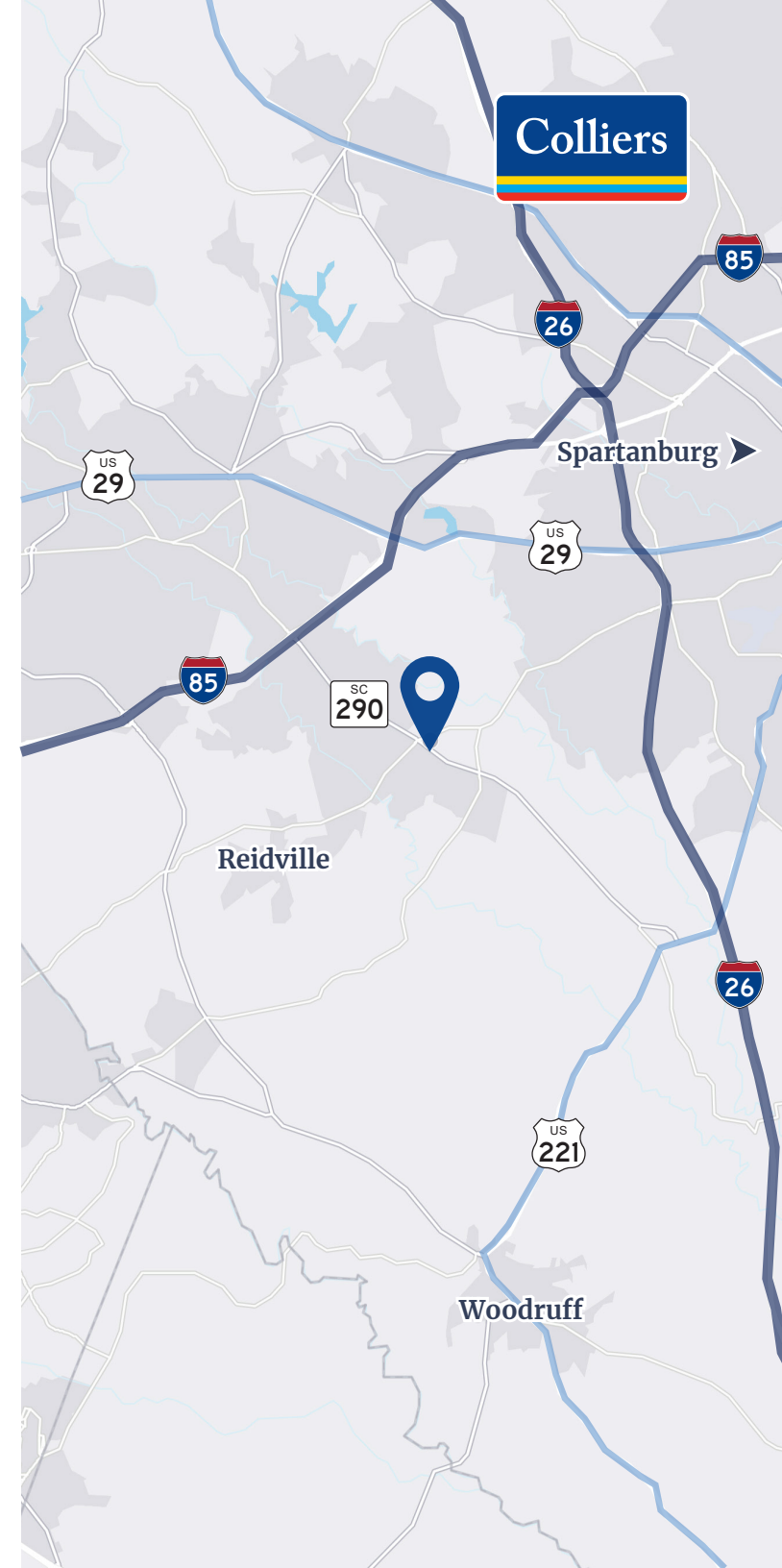
- Surrounded by strong national retailers including, Publix, CVS Pharmacy, McDonalds, Ace Hardware, Walgreens, 7-Eleven and more
- Ideal for high-exposure commercial use
- Strong residential density
- Access points on Hwy 290 and Reidville Road

Demographics

	1 mile	3 miles	5 miles
Population	3,009	22,677	58,016
Households	1,186	8,813	22,643
Avg HH Income	\$108,569	\$114,321	\$104,166
Total Employees	980	6,359	16,502

Asking Price:

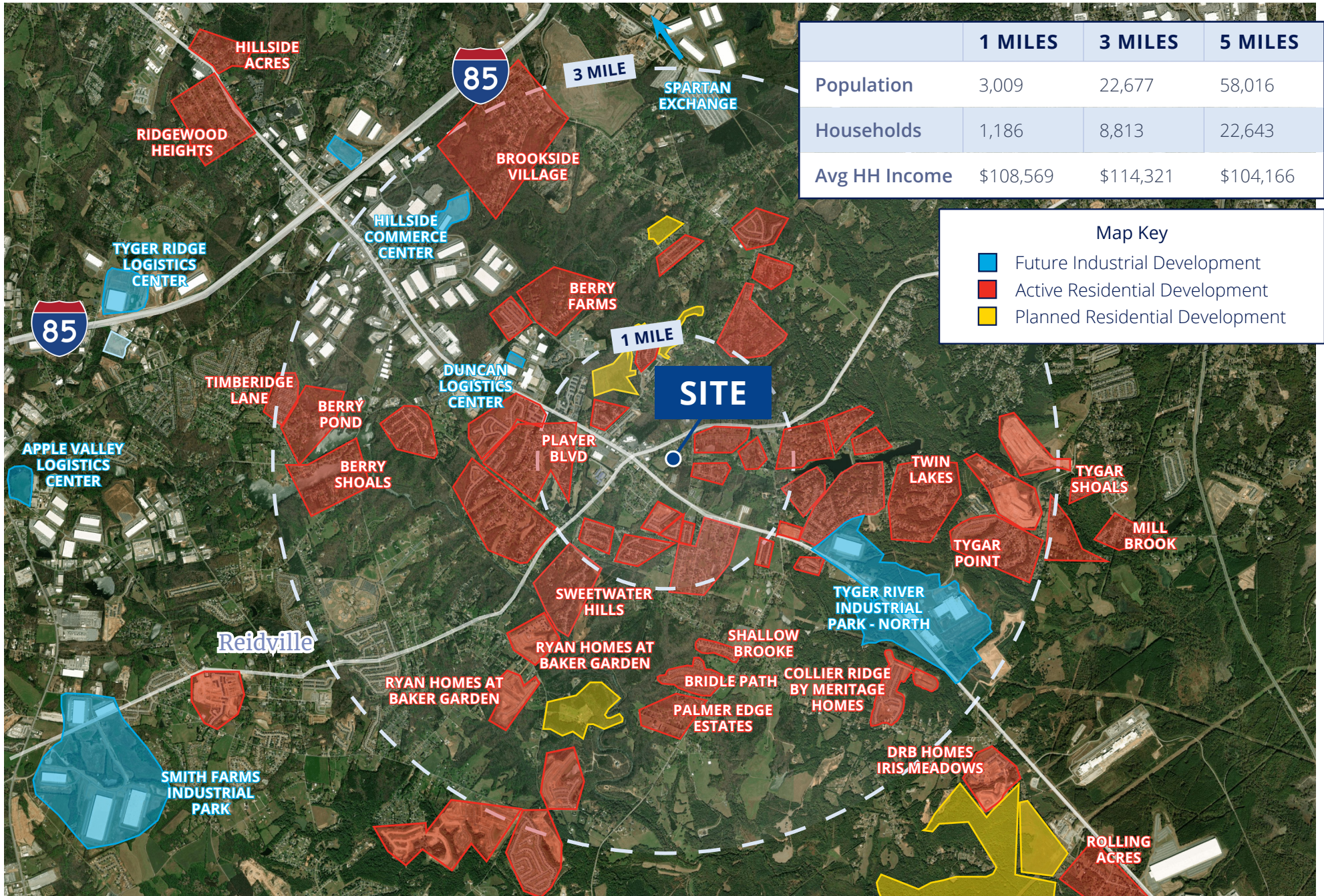
Contact Brokers



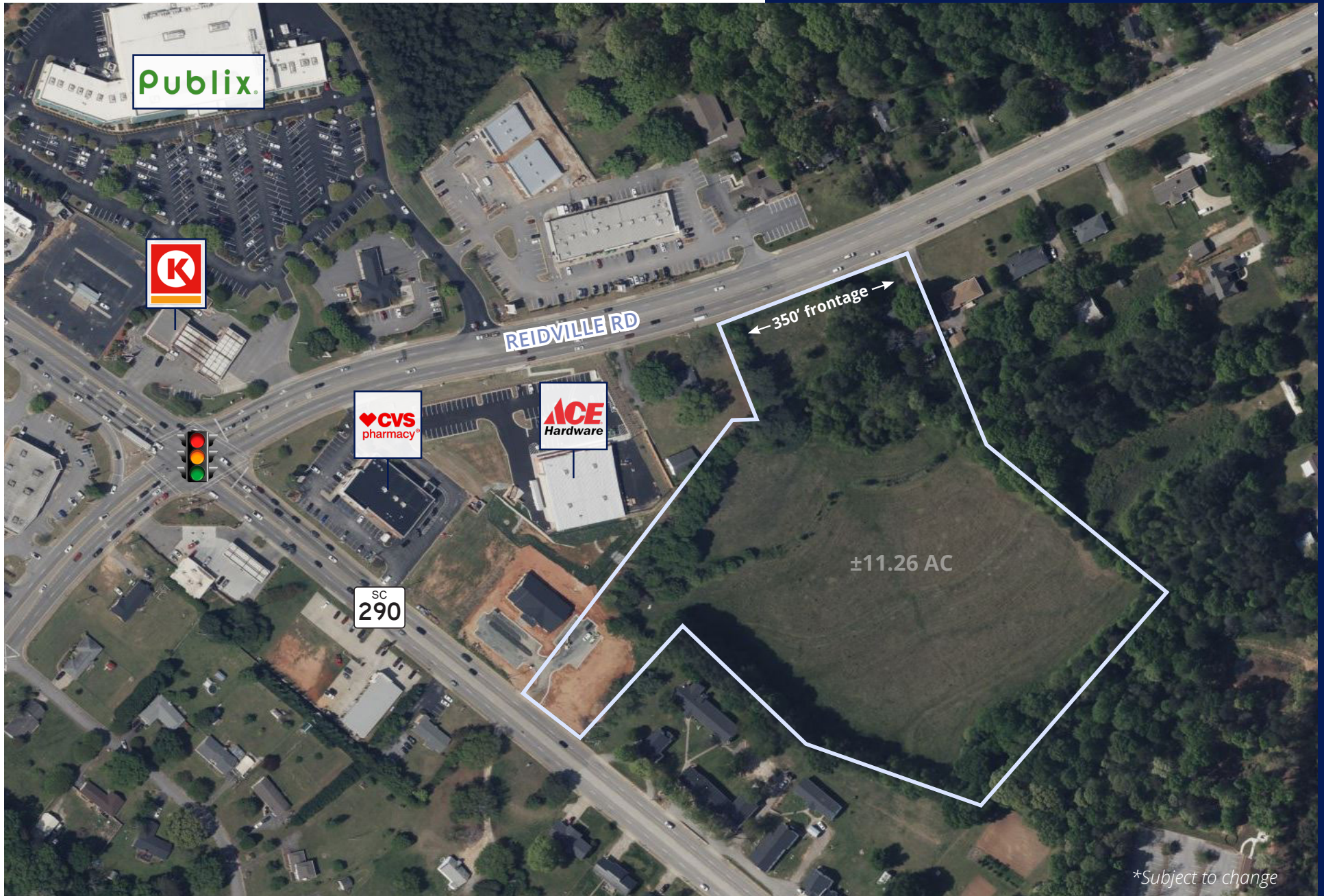
Surrounding Area



Area Development Map



Site Plan



*Subject to change

Market Overview

Positioned along the I-26 and I-85 corridor in South Carolina's Upstate, 5831 Reidville Road benefits from strong economic growth and proximity to major regional employment centers. Spartanburg County's location between Greenville, Spartanburg and Charlotte supports continued demand across multiple property types.



Population & Growth

- Spartanburg County is one of the fastest-growing counties in the Upstate, with steady population gains driven by domestic in-migration and job creation.
- Growth is concentrated along major transportation routes—including Reidville Road, I-26, and I-85—supporting new residential communities and retail demand.
- The area benefits from spillover demand from the Greenville–Spartanburg–Anderson MSA, one of the largest markets in South Carolina.



Workforce & Employment

- Spartanburg County is a major manufacturing and logistics hub, anchored by global employers such as BMW Manufacturing, Michelin, and numerous Tier 1 and Tier 2 suppliers.
- The county supports a large, skilled workforce across advanced manufacturing, automotive, distribution, healthcare and education.
- Ongoing industrial investment continues to drive daytime population growth, strengthening demand for nearby services, retail, and housing options.

Strategic Location & Quality of Life

- Located near I-26, the site offers efficient connectivity to I-85, Greenville, Spartanburg and Charlotte, placing it within one of the Southeast's fastest-growing logistics corridors.
- The area benefits from proximity to BMW Manufacturing, Inland Port Greer and major distribution centers, reinforcing its importance in regional supply chains.
- Residents enjoy a high quality of life with a lower cost of living compared to larger South-eastern metros, attracting new residents and relocating businesses.
- Close access to outdoor recreation in the Upstate and Blue Ridge foothills, combined with growing retail, dining and entertainment options, enhances the area's appeal.
- The Reidville Road corridor continues to evolve as a key growth area, supported by infrastructure improvements and continued public and private investment.

Retail Team



Scott Burgess
Vice President
+1 864 527 5434
scott.burgess@colliers.com



Garrison Smith
Brokerage Associate
+1 864 527 5431
garrison.smith@colliers.com



Zane Landwerlen
Brokerage Associate
+1 864 527 5432
zane.landwerlen@colliers.com



Josh Seibert
Brokerage Associate
+1 864 527 5417
josh.seibert@colliers.com

Lead Brokers

Copyright © 2026 Colliers International. Information herein has been obtained from sources deemed reliable, however its accuracy cannot be guaranteed. The user is required to conduct their own due diligence and verification.

