



FEATURES

- Gated Yard
- 1 Dock High
- 1 Ground Level
- 400 Amp Serv.
- Tilt-up Concrete

Asking Price
\$2,900,000

PRESENTED BY

Tony Hermosillo
Vice-President
909-917-2179
DRE Lic #01756910
tonyh@mgrrealestate.com

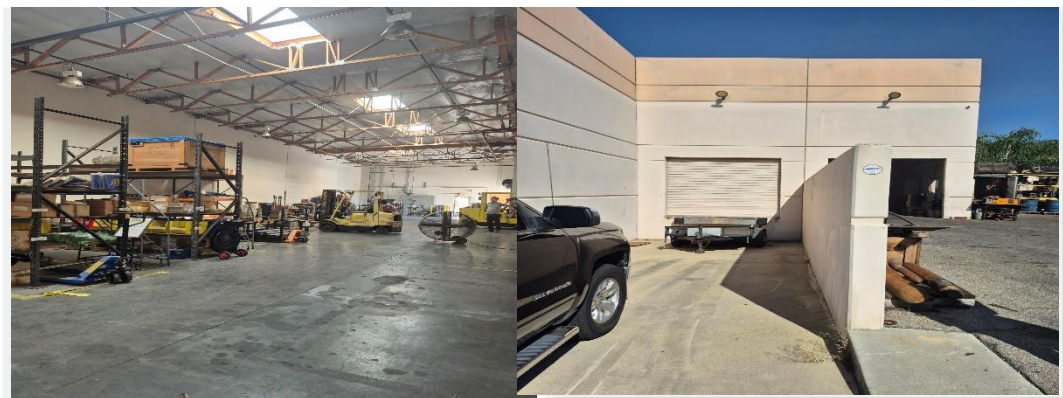
Dan Dickson
Regional Manager
909-262-5986
DRE Lic #01226387
ddickson@mgrrealestate.com

6675 Doolittle Ave. Riverside, CA 92503

The property consists of approximately **±9,867 square feet**, including **±6,267 SF of warehouse space**, **±1,800 SF of office**, and an additional **±1,800 SF mezzanine**—providing flexibility for operations, storage, or administrative use.

Situated on a **±33,977 square foot lot**, the site features a **secured, gated yard** and **28 on-site parking spaces**, making it well-suited for logistics, distribution, or contractor use.

This property combines modern construction with functional design, offering an efficient and secure environment for industrial operations.



COMMERCIAL | RESIDENTIAL | PROPERTY MANAGEMENT

ONTARIO COSTA MESA VICTORVILLE RANCHO MIRAGE CARLSBAD IRVINE

(800) 777-7647 mgrrealestate.com DRE #01841921

All items on this page are deemed to be accurate, but should be viewed as reference only. MGR Real Estate, Inc. does not warranty/guaranty the validity of any information on this page.