



Avison Young - Raleigh-Durham | 5440 Wade Park Boulevard, Suite 200 | Raleigh, NC 27607 | 919 785 3434

FOR SUBLEASE

6500 Creedmoor Road, Suite 100

Raleigh, NC 27613

**AVISON
YOUNG**

Property highlights

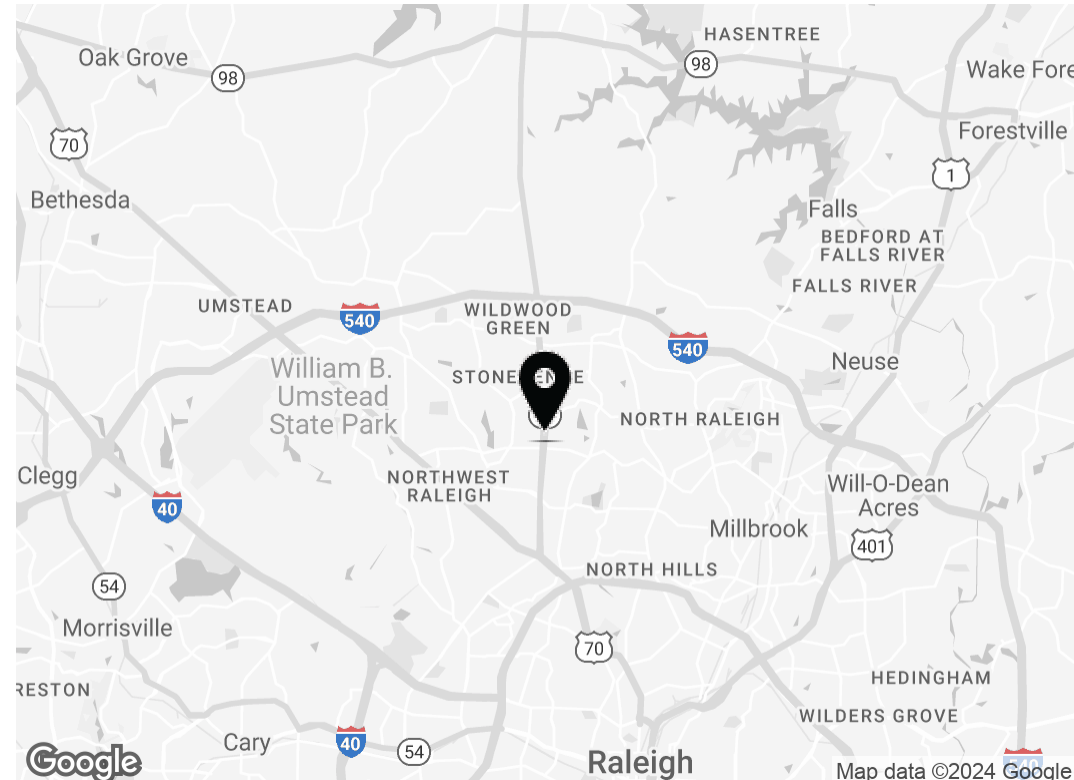
Class A office space for sublease in North Raleigh

- First floor suite with building lobby exposure
- High end finishes
- Corner suite with office sidelights provides abundant natural light
- Located along major North/South Raleigh corridor
- Master lease expires June 30, 2026

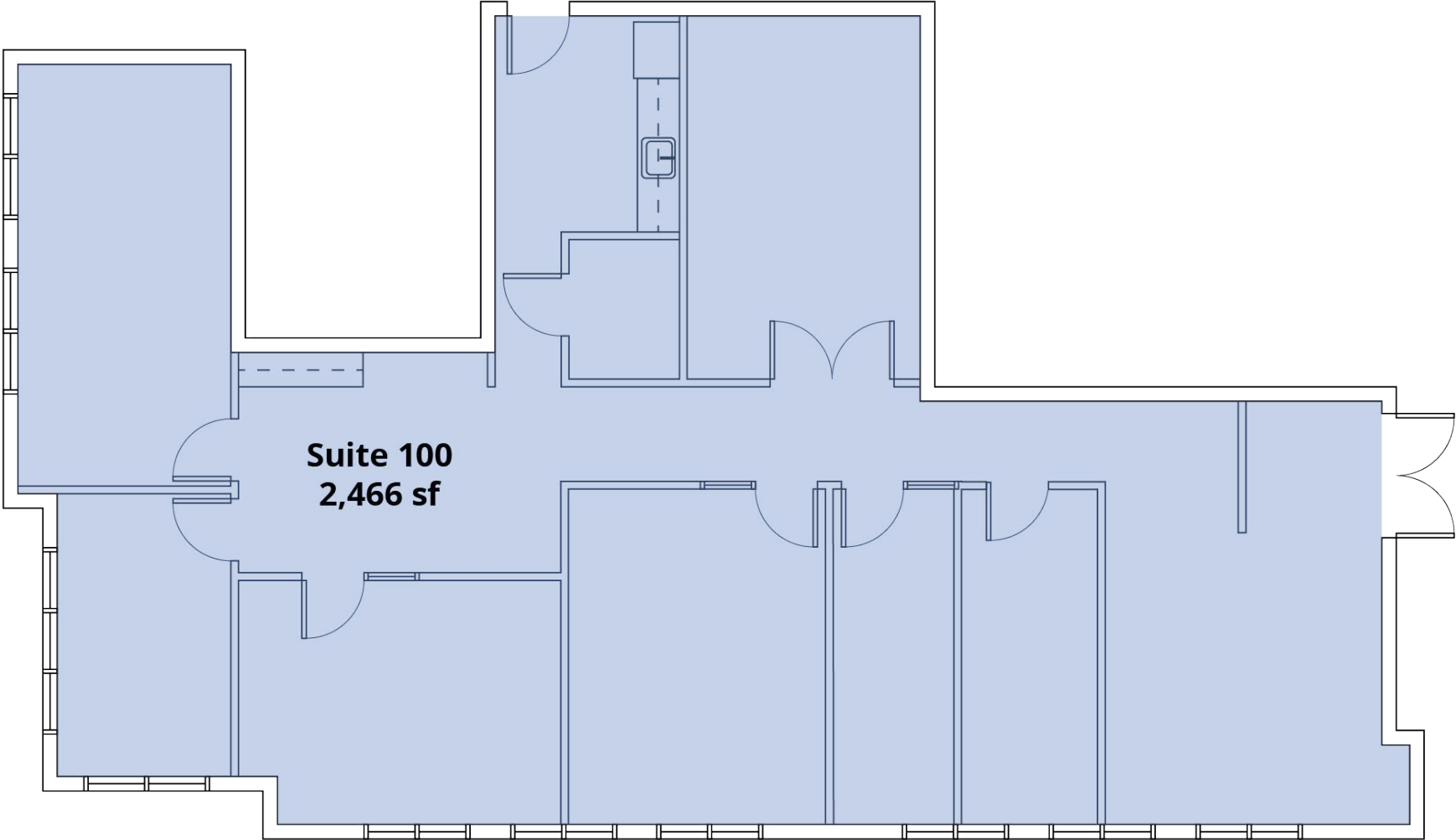


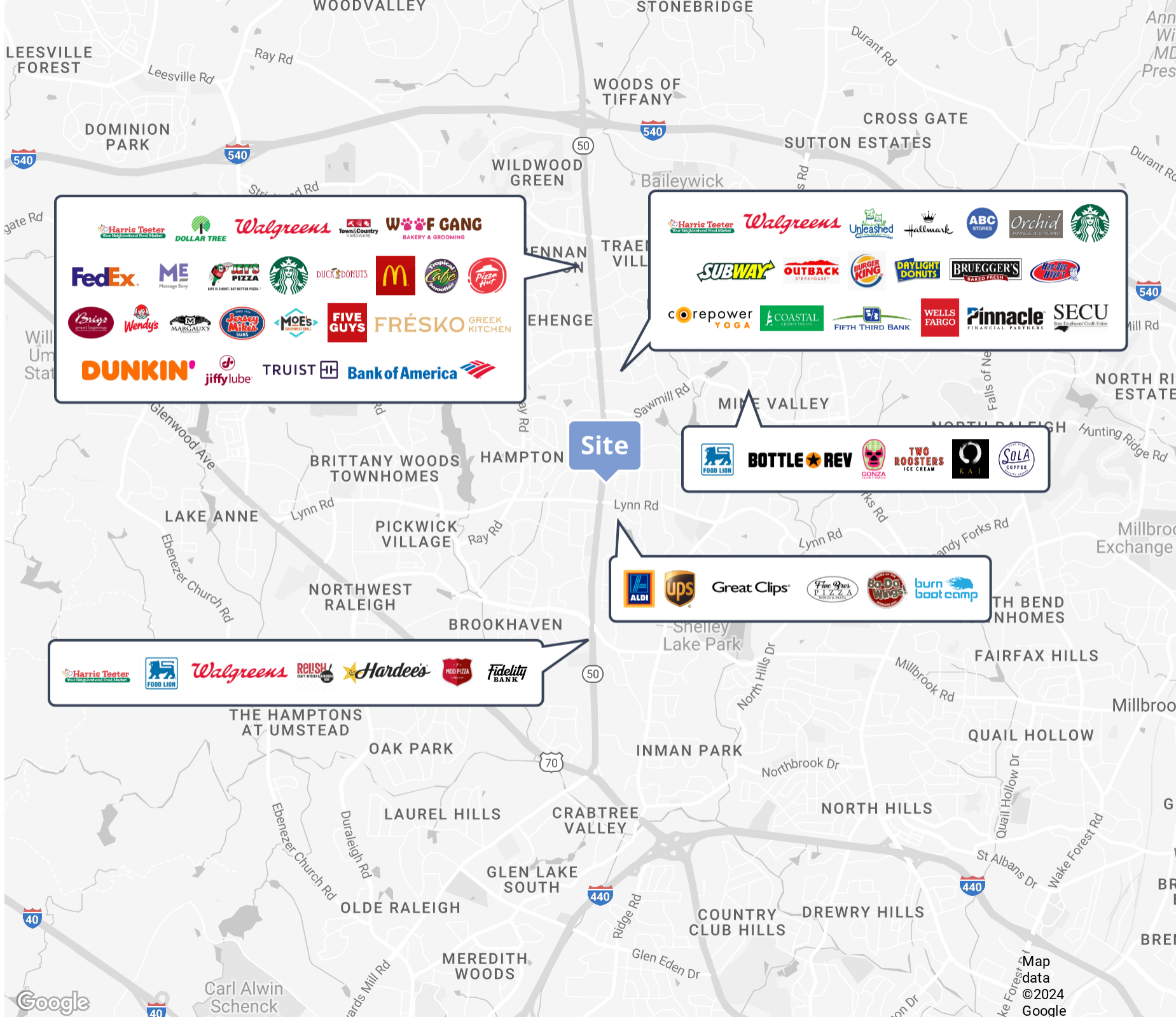
Offering Summary

Lease Rate:	Contact broker
Building Size:	28,522 sf
Available SF:	2,466 sf
Sublease Expires:	6/30/2026
Year Built:	2009
Parking Ratio:	4.5/1,000 sf



Floor Plan





Demographics

183,767

Total population
within a 5-mile radius

83,531

Total households
within a 5-mile radius

\$148,139

Average hh income
within a 5-mile radius

\$598,220

Average house value
within a 5-mile radius

Let's talk.

Janet Clayton, CCIM

Principal, Sales & Leasing

D 919 420 1581

janet.clayton@avisonyoung.com

Avison Young - Raleigh-Durham | 919 785 3434
5440 Wade Park Boulevard, Suite 200 | Raleigh, NC 27607

© 2024. Avison Young - Raleigh-Durham. Information contained herein was obtained from sources deemed reliable and, while thought to be correct, have not been verified. Avison Young - Raleigh-Durham does not guarantee the accuracy or completeness of the information presented, nor assumes any responsibility or liability for any errors or omissions therein.

**AVISON
YOUNG**