

Office | For Lease

CBRE

200 W City Center Dr

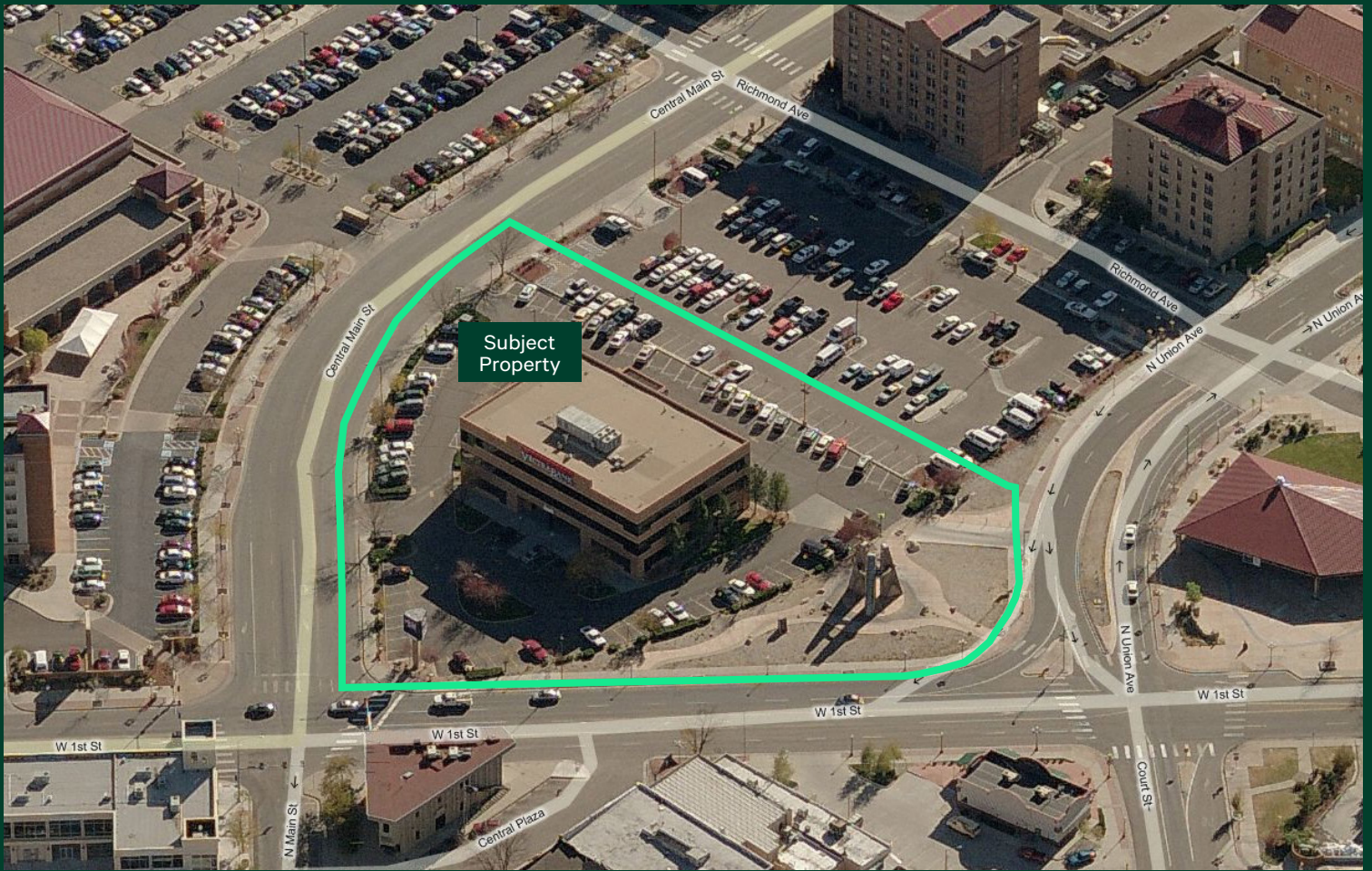
200 W City Center Dr
(aka 200 w 1st St)
Pueblo, CO 81003

Class A Office Building | Prime CBD Location



Pueblo CO Office Space

200 W City Center Dr (aka 200 w 1st St)



Investment Highlights

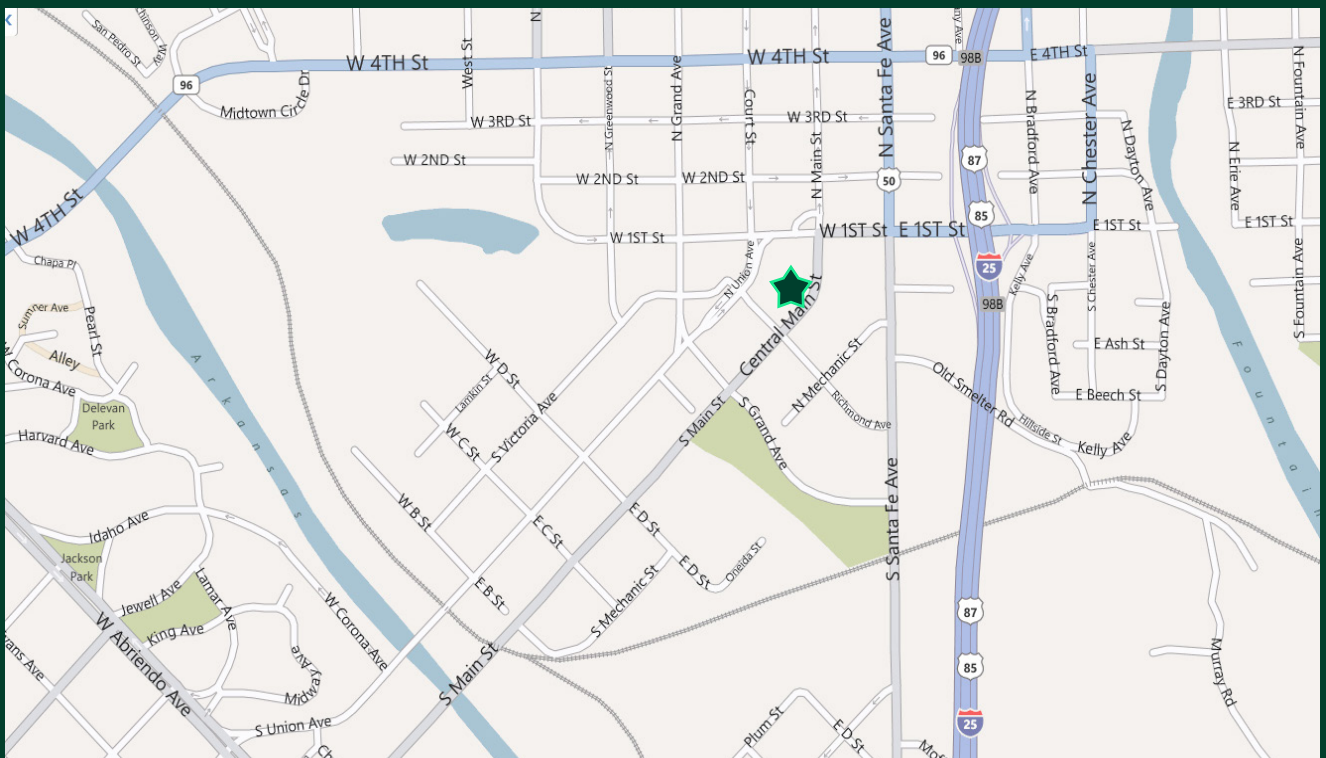
- + Class A Office Building
- + 3 Story office/retail space with flexible floor plans
- + Brick Facade
- + Handicap Accessible
- + Visible from I-25

Location

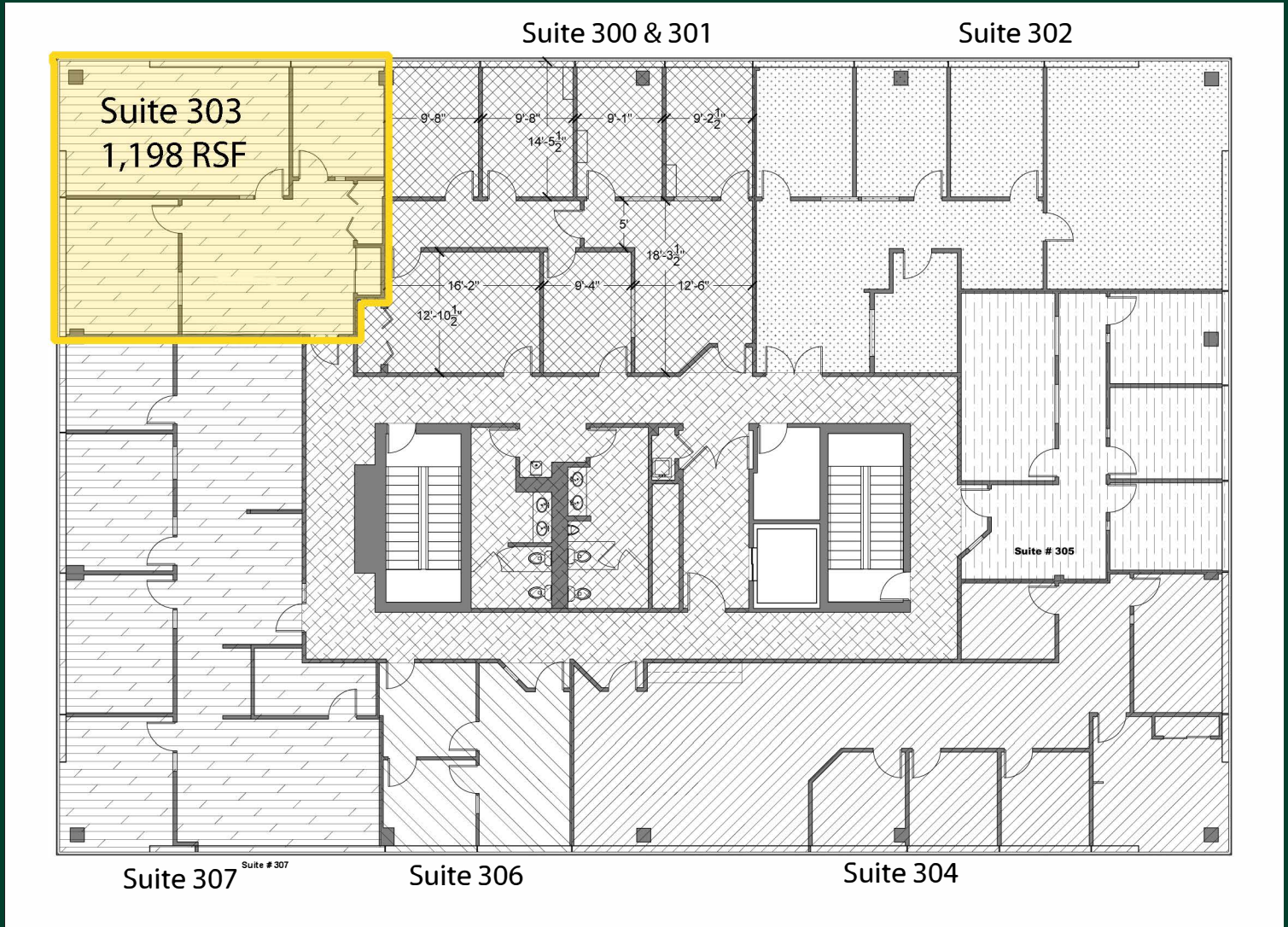
- + Direct access to I-25
- + Located in CBD
- + Within walking distance of River Walk

Building Information

- + Building Size: 31,350 SF
- + Space Available:
Suite 303: 1,198 SF
- + Zoning: B-4 Regional
Business District
- + Lease Rate: \$14.00 - \$16.00 PSF
Gross
(Excludes janitorial)



Site Plan Third Floor



Contact Us

Taylor Stamp
Vice President
719-235-8099
taylor.stamp@cbre.com

© 2026 CBRE, Inc. All rights reserved. This information has been obtained from sources believed reliable, but has not been verified for accuracy or completeness. You should conduct a careful, independent investigation of the property and verify all information. Any reliance on this information is solely at your own risk. CBRE and the CBRE logo are service marks of CBRE, Inc. All other marks displayed on this document are the property of their respective owners, and the use of such logos does not imply any affiliation with or endorsement of CBRE. Photos herein are the property of their respective owners. Use of these images without the express written consent of the owner is prohibited.