

3,152.22 Acres North of Mesquite
Listed \$10,000 to \$30,000 Per Acre



Mark Anthony Rua
Brokers

2855 St Rose Parkway, Suite 100, Henderson, NV 89052
markanthonyrua@gmail.com www.mrlandlasvegas.com

Office: 702-992-7534
Cell: 702-595-6244



The information contained herein is subject to verification and no liability for errors or omissions is assumed. The price, data, and other information are subject to change or the listing may be with

3,152 +/- Acres North of Mesquite
Listed \$10,000 to \$30,000 Per Acre



- Located in Lincoln County.
- 008-261-05 – 112.22 +/- Acres zoned for single-family residential; Priced \$3,366,600 - \$30,000 per acre
- 008-251-03 – 1,280 +/- Acres ; and 008-251-04 – 1,760 +/- Acres sold together- 3,040 +/- total acres. Zoned for single-family residential. Priced \$30,400,000 - \$10,000 per acre.
- Parcels are just north of Mesquite, a resort destination in the picturesque Virgin River Valley. Mesquite offers world-class golf, fine dining, celebrity entertainment and 24-hour gaming.



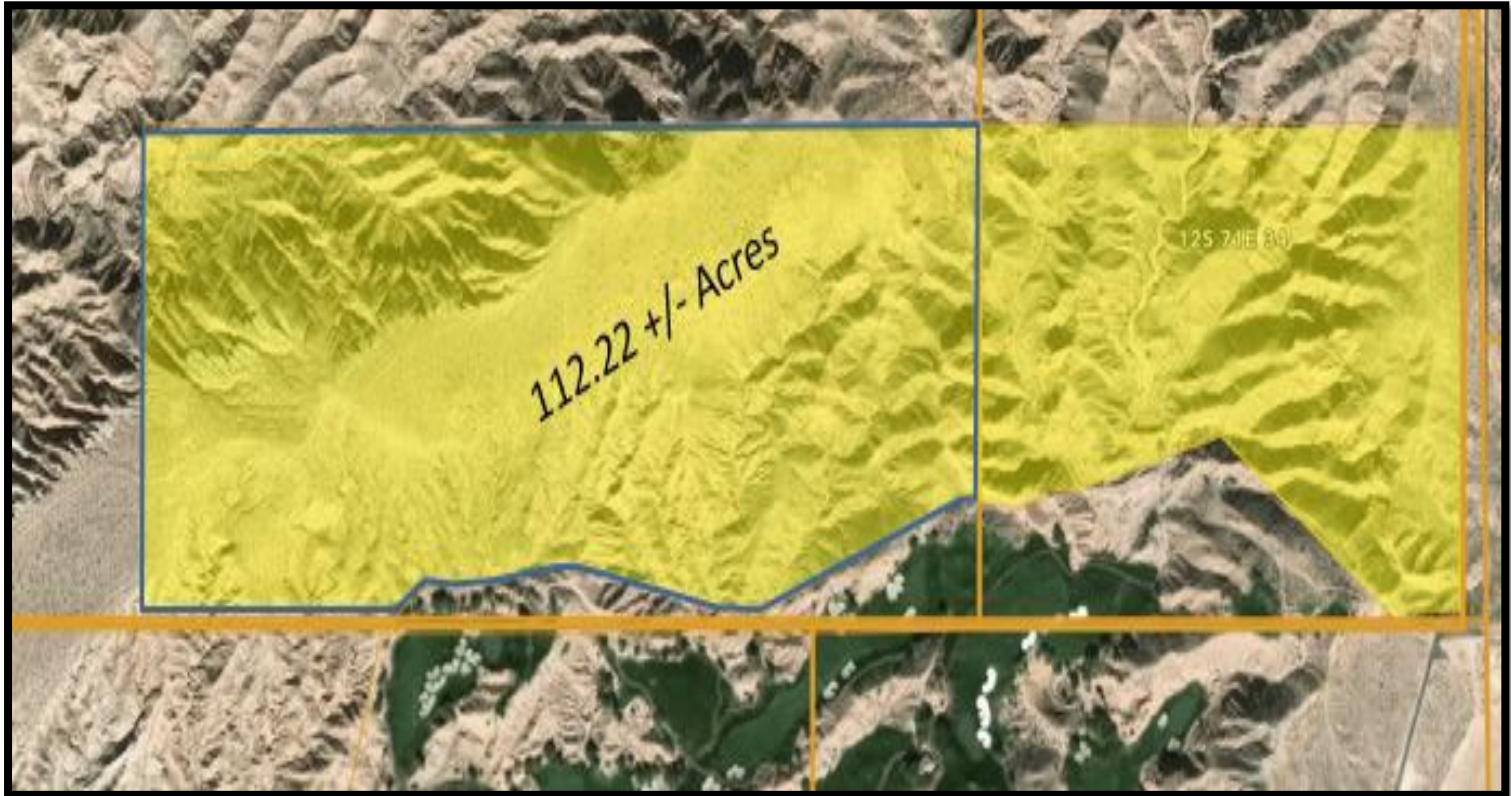
Mark Anthony Rua S.026655
Brokers

2855 St Rose Parkway, Suite 100, Henderson, NV 89052
markanthonyrua@gmail.com www.mrlandlasvegas.com

Office: 702-992-7534
Cell: 702-595-6244



3,152 +/- Acres North of Mesquite



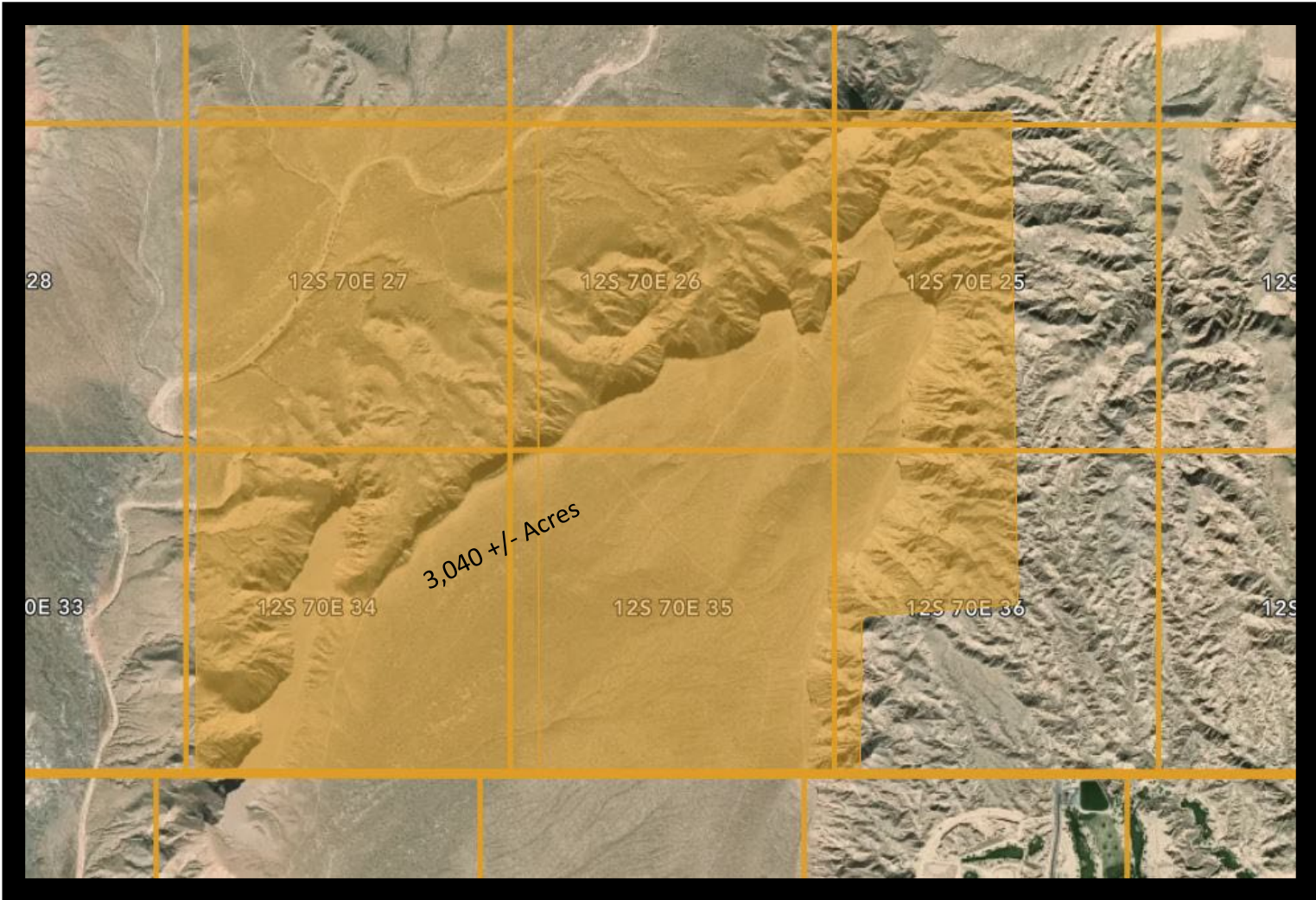
Mark Anthony Rua
Brokers

2855 St Rose Parkway, Suite 100, Henderson, NV 89052
markanthonyrua@gmail.com www.mrlandlasvegas.com

Office: 702-992-7534
Cell: 702-595-6244



3,152 +/- Acres North of Mesquite



Mark Anthony Rua
Brokers

2855 St Rose Parkway, Suite 100, Henderson, NV 89052
markanthonyrua@gmail.com www.mrlandlasvegas.com

Office: 702-992-7534
Cell: 702-595-6244

