

FOR SUBLEASE

CBRE

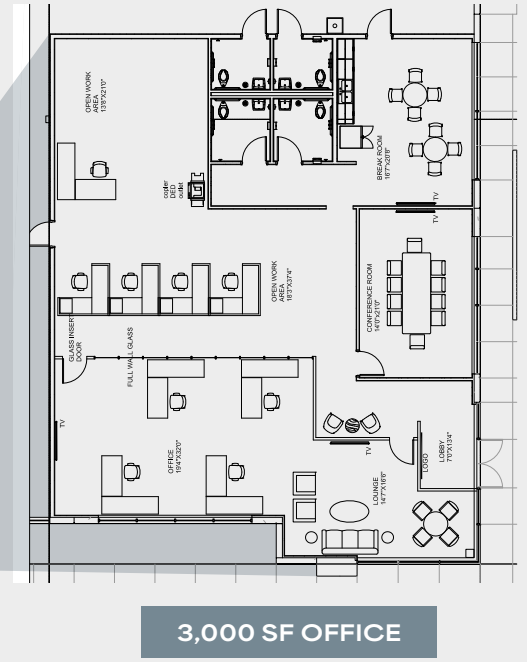
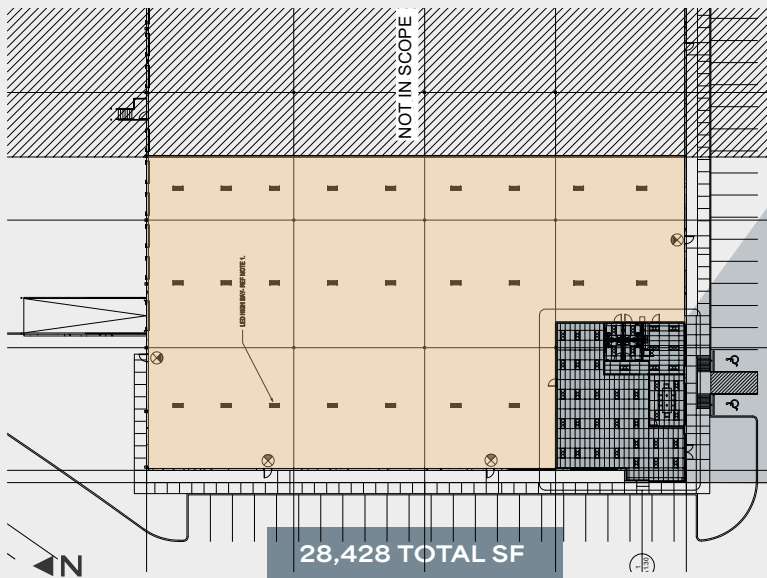


28,428 SF OF CLASS A DISTRIBUTION WAREHOUSE AVAILABLE FOR SUBLEASE

FAIRWAY NORTH LOGISTICS PARK

1207 RANKIN RD, SUITE 300 | HOUSTON, TX 77073

FLOOR PLAN | SUITE 300



SPECIFICATIONS

28,428 SF
TOTAL

25,428 SF
WAREHOUSE

3,000 SF
OFFICE

TILT WALL
CONSTRUCTION

REAR-LOAD
CONFIGURATION

32'
CLEAR HEIGHT

ESFR
SPRINKLERED

POWER
3 PHASE, 480 VOLT
200 AMP

LOADING
ACCESS

4 DOCK-HIGH OH
DOORS (2 WITH
PIT LEVELERS);
1 RAMP

PROXIMITY
TO IAH

LOCATED 4 MILES
FROM BUSH
INTERCONTINENTAL
AIRPORT

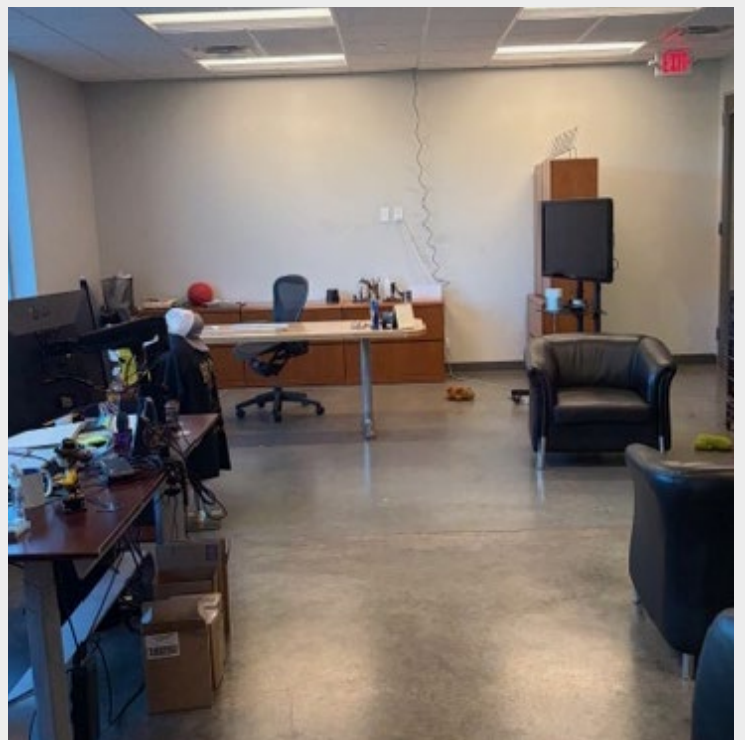
FREEWAY
ACCESS

EASY ACCESS TO
HARDY TOLL RD,
BELTWAY 8, I-45

SUBLEASE
EXPIRATION

8/31/2029

OFFICE PHOTOS

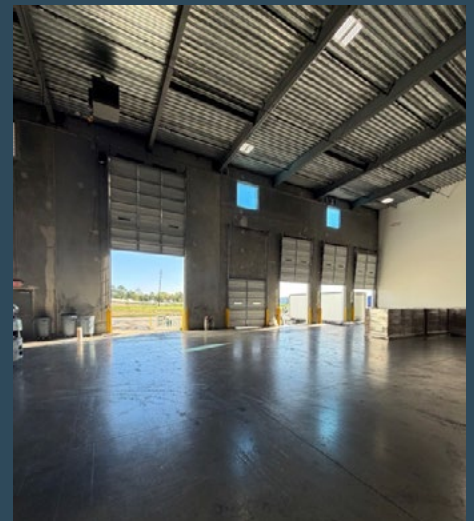


28,428 SF OF CLASS A DISTRIBUTION WAREHOUSE AVAILABLE FOR SUBLEASE

FAIRWAY NORTH LOGISTICS PARK

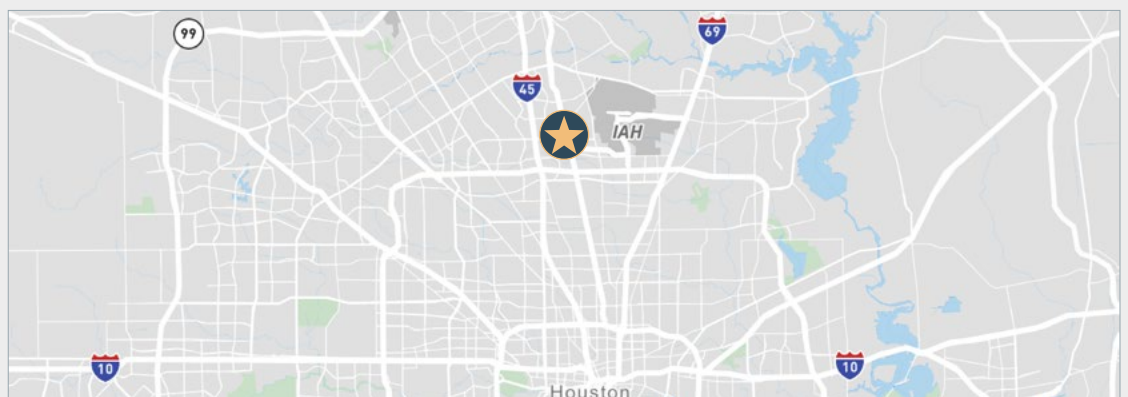
1207 RANKIN RD, SUITE 300 | HOUSTON, TX 77073

WAREHOUSE PHOTOS



STEVE KING
First Vice President
+1 713 577 1617
steve.king@cbre.com

WESLEY KING
Senior Associate
+1 713 577 1582
wesley.king@cbre.com



© 2026 CBRE, Inc. All rights reserved. This information has been obtained from sources believed reliable, but has not been verified for accuracy or completeness. You should conduct a careful, independent investigation of the property and verify all information. Any reliance on this information is solely at your own risk. CBRE and the CBRE logo are service marks of CBRE, Inc. All other marks displayed on this document are the property of their respective owners. Photos herein are the property of their respective owners. Use of these images without the express written consent of the owner is prohibited.

CBRE