









## Location

---

Montpelier Street is moments from Harrods, Harvey Nichols and the boutiques of Sloane Street, with cafés and restaurants woven throughout the surrounding streets. Hyde Park and the South Kensington museums are a short walk away, giving this address a steady mix of local residents, destination visitors and passing trade.

---



## SIZE

**5,478 Sq Ft**

## FEATURES

- Versatile Private Dining Room
- State of the Art Professional Kitchen
- Goods Lift
- Extensive Cold Storage

## TENURE

**Freehold**

## LOCAL AUTHORITY

**Westminster**

## PRICE:

**£ 26,750,000**

**or 1,000,000 Pa**

# Montpelier Street, SW7

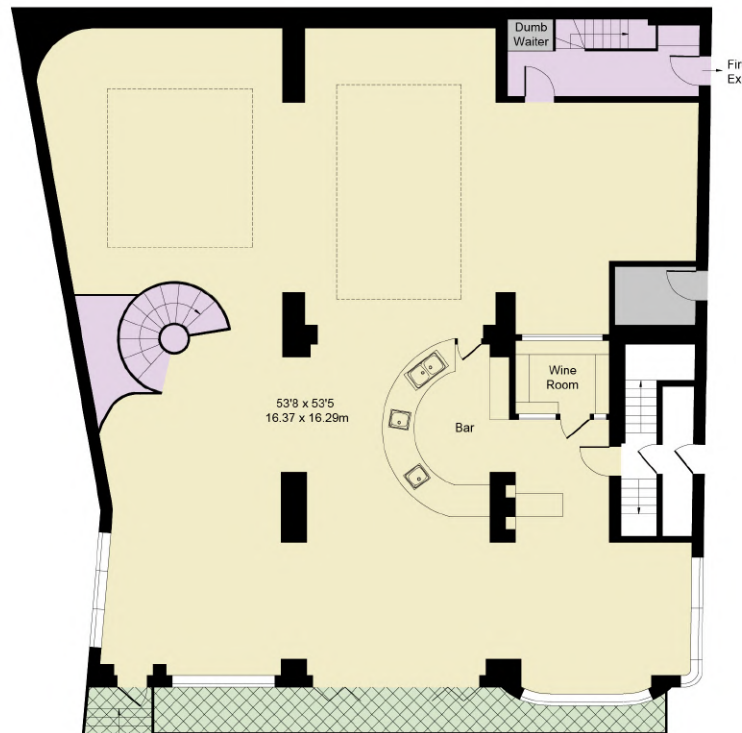
Approximate Gross Internal Area 5478 sq ft - 509 sq m

Key :  
CH - Ceiling Height



Lower Ground Floor

This plan is not to scale and must be used as layout guidance only. All measurements and areas are approximate and should not be relied upon to provide accurate information. This plan must not be relied upon when making property valuations, design considerations or any other such relevant decisions. We accept no responsibility or liability (whether in contract, tort or otherwise) in relation to any loss whatsoever arising from or in connection with any use of this plan or the adequacy, accuracy or completeness of it or any information within it.



Ground Floor

United Kingdom | Sotheby's INTERNATIONAL REALTY

LOCAL AUTHORITY:  
Westminster

© 2024 Sotheby's International Realty Affiliates LLC. All rights reserved. Sotheby's International Realty® and the Sotheby's International Realty Logo are service marks licensed to Sotheby's International Realty Affiliates LLC and used with permission. Sotheby's International Realty Affiliates LLC fully supports the principles of the Fair Housing Act and the Equal Opportunity Act. Each office is independently owned and operated.

Images, floorplans, and descriptions in this brochure are for illustrative purposes only and may not accurately reflect the current property. All dimensions are approximate and should be independently verified. This material does not form part of any contract or warranty. Prospective buyers are advised to conduct their own due diligence and seek independent legal advice.

Exclusively listed with  
United Kingdom Sotheby's International Realty

---



Richard Cutt

+44 (0) 7765 220 529

[rc@sothebysrealty.co.uk](mailto:rc@sothebysrealty.co.uk)



Sarah Peck

+44 (0) 7300 237 507

[spe@sothebysrealty.co.uk](mailto:spe@sothebysrealty.co.uk)

United  
Kingdom

| Sotheby's  
INTERNATIONAL REALTY